

**The Evening Herald**

E. J. MURRAY  
Editor  
FRED SOULE  
City Editor

Published daily except Sunday by  
The Herald Publishing Company of  
Klamath Falls, at 115 Fourth Street.

Entered at the postoffice at Klamath Falls, Ore., for transmission thru the mails as second-class matter.

Subscription terms by mail to any address in the United States:

One year ..... \$5.00  
One month ..... .50

Member of the Associated Press

The Associated Press is exclusively entitled to the use for republication of all news dispatches credited to it or not otherwise credited in this paper, and also local news published herein.

All rights of republication of special dispatches herein are also reserved.

SATURDAY, JANUARY 17, 1920.



**5,500,000 ACRES TO BE ADDED TO FORESTS**

MISSOULA, Mont., Jan. 16.—Five and a half million acres of privately owned and state owned timber lands may be added to the national forests of district one. If the national forestry program, soon to be presented, is adopted by congress, the service may receive these lands by exchange or purchase.

In the first district there are 2,801,283 acres of privately owned lands which are located within the national forests. In addition, the states of Montana and Idaho own 275,860 acres in the national forests. There are also 2,136,007 acres of forest land outside the national forests and privately owned which are desirable for national forestry purposes, while the two states have title to 289,240 acres of such land.

**MAIDS ARE COY**

ST. LOUIS, Mo., Jan. 16.—When young women freshmen of Washington University, numbering 150, were questioned recently whether they favored cheek-to-cheek dancing they overwhelmingly decided it was insanitary and should be barred. One hundred and forty-five of them de-

**YOU WILL BE OLDER**

Life insurance requires a yearly payment, frequently during a long term of years, and the difference between the premium at your present age and the premium at an age a year older would amount to a sizable sum as the years pass. The rock-bottom price is now available to you.

Have you yet adjusted your family's protection to the present scale of living costs? Has your business been made safe by business insurance? Have you covered your inheritance taxes?

Save money by insuring, or taking more insurance, before your age changes! And by all means learn about our new policy and its special protective features—protects you and your family if you become disabled, and, in addition, protects them if you go. Accidental death **DOUBLES** the amount of the insurance.

THE MUTUAL LIFE IS THE OLDEST LEGAL RESERVE COMPANY IN AMERICA. ITS FINANCIAL STRENGTH IS IMPREGNABLE, ITS SERVICE IS UNEXCELLED, AND ITS POLICIES CONTAIN THE BEST THAT THE SCIENCE OF LIFE INSURANCE HAS YET DEVISED. Let us fix up your insurance needs at the rate for your present age. It's worth doing! Get the best.

Ask

**Geo. C. Ulrich**

"The Insurance Man"

District Manager for

The Mutual Life Insurance Company of New York  
Office over the First State and Savings Bank

bought by corporations who intend peopling it with European tenants," Dr. Mead said. "They seek to create little Swedens, Denmark and Poland, and thus establish tenantry as a permanent institution," he continued. "Such arrangements already exist in many states. That is not democracy. It means political unrest and disorder as an ultimate result."

Here is what Dr. Mead recommended:

1. Grouping of farm owners into organized communities.
  2. Farms large enough to give a living income to the owner and his family.
  3. A credit system for development in which the amount of money the state would lend settlers would be known; also the amount which the settler must furnish to be accepted.
  4. Practical advice and direction in the improvement of farms and for organizing to co-operate.
- "American farms are under-capitalized," he said. "Lacking money and credit, beginners buy poor cows, work with poor tools and live in poor houses, and that means poor returns. Unless enough money is provided to put the farm on a paying basis it is best not to lend any."
- Co-operation, Dr. Mead said, is the only foundation for a modern rural community. "It provides common interests," he asserted. "It creates local pride. It puts an end to the migratory habit, and strengthens the desire for a permanent home and progress in social existence. Co-operation is a bond that will overcome difference of language and racial habit. That is shown in California, where 13 nationalities work together and dance together in the social hall of the Durham colony."
- Durham colony is the successful land settlement project established by the state of California several years ago.

**CUBAN SUGAR DELAYED.**

GALVESTON, Tex., Jan. 17.—No more shipments of crude or raw sugar from Cuba are expected to arrive in Galveston before the latter part of January. It is announced by officials of the sugar refinery at Sugarland, to which shipments are consigned. Several cargoes had been expected to reach here early in January but these are said to have been delayed and will not reach here until the latter part of the month. During the first week of December 28,000 bags of new Cuban sugar were delivered through this port.

**AWAY WITH THOSE ACHES AND PAINS**

Keep Sloan's Liniment handy to put the "feel good" back into the system

ALL it needs is just one trial—a little applied without rubbing, for it penetrates—to convince you of its merit in relieving sciatica, lumbago, neuralgia, lame muscles, stiffness, bruises, pains, aches, and strains, the after-effects of exposure. The congestion is scattered, promptly, cleanly, without effort, economically. You become a regular user of Sloan's Liniment, adding your enthusiasm to that of its many thousands of other friends the world over, who keep it handy. Three sizes at all druggists—35c., 70c., \$1.40.



**J. H. Garrett & Son**  
Automobile Experts  
522-538 S. Sixth St.

When at last Spring arrives, you will wish that you had fixed your car sooner; so we are suggesting that you bring it in to us to-day and let our expert mechanics start to work on it. We have a modern and complete repair shop and can assure you of service and dependable work.

**FARM OWNERS NEEDED, SAYS ELWOOD MEAD**

BOZEMAN, Mont., Jan. 17.—"We are becoming a nation of farm renters," Elwood Mead, chairman of the California Land Settlement board, told delegates to the Montana State Farmers' Institute here yesterday in urging "a planned rural development" based on the theory used in establishing state farm projects in California.

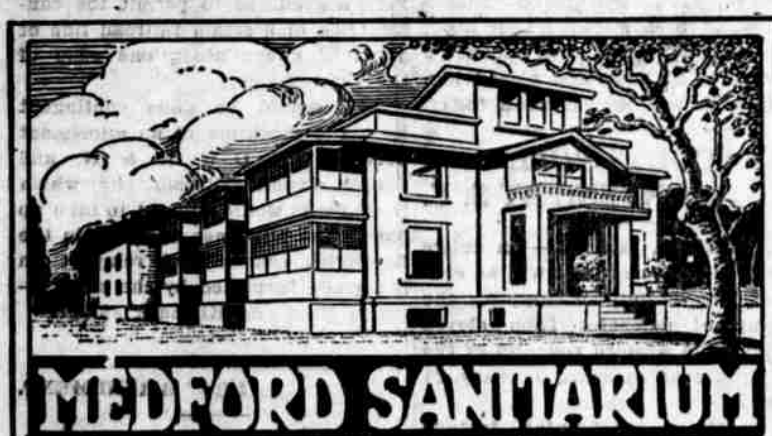
"More than half the land in Kansas, Nebraska, and Oklahoma is farmed by tenants," he said. "There are less people on farms in some counties in Missouri, Illinois and Iowa than there were ten years ago. Prof. Ross and Edith Wharton give vivid pictures of the depleted life in rural New England. Last year I spent six months studying the agricultural conditions in the southern states along the Atlantic seaboard, and came away profoundly depressed."

Large areas of land are being

**QUICKLY CONQUERS CONSTIPATION**

Don't let constipation poison your blood and curtail your energy. If your liver and bowels don't work properly, take CARL'S LITTLE LIVER LIFTERS today and your trouble will cease. For dizziness, lack of appetite, headache and blotchy skin nothing can equal them. Purely vegetable. Small Pill—Small Dose—Small price. At the

**Star Drug Co.**



**MEDFORD SANITARIUM**  
Diseases of Women a Specialty.  
MEDFORD, OREGON.

EUGENE WALTERS

**JUST A Woman**

Starring Charlotte Walker

AT THE  
**Mondale Theatre**  
TONIGHT  
SPECIAL SINGING AT EACH SHOW

**FINANCING THE FARMER**

WITH even greater interest and activity than ever before—the First National Bank is going to back the business of farming in this locality.

You may be finding it necessary to make additions and improvements in advance of your Spring operations—in which we can lend a helping hand. Come in and talk things over.

E. R. Reames, President  
A. M. Collier, Vice-President  
John M. Moore, Vice-President  
Leslie Rogers, Cashier

**The First National Bank**  
KLAMATH FALLS OREGON

**REX CAFE**  
\$1.00—Sunday Special Dinner—\$1.00

**MENU**

Olympia Oyster Cocktail  
Soup  
Cream of Chicken a la Royale  
Relishes  
California Ripe Olives  
Dill Pickles  
Salad  
Waldorf with Whipped Cream  
Your choice of  
Chicken Patties a la Toulouse  
Fricassee of Young Chicken, Peasant Style  
Roast Spring Chicken, Oyster Dressing, Giblet Sauce  
Vegetables  
Mashed Potatoes  
Stewed Sugar Corn  
DESSERTS  
Your choice of  
Cabinet Pudding Vanilla Sauce  
Hot Mince Pie  
Custard Pie  
Cafe Noir

**Jewel Cafe**  
Special Sunday Dinner, \$1.00

**RELISH**  
Picalilli  
Baby Beets

**SOUP**  
Mock Turtle, Americaine

**SALAD**  
Matinee Salad  
Choice of  
Roast Country Ham a la Rothschild  
Belgian Hare, Fried Hominy Grits  
Fricassee of Chicken with Small Pastries  
Klamath Hen Turkey, Cranberry Jelly

**VEGETABLES**  
Martha Washington Potatoes  
Creamed Brussels Sprouts  
Choice of  
Hot Apple Turnover, Nutmeg Sauce  
Boston Cream Pie  
Vanilla Blanc Mange, Fruit Sauce

**Thrift and Little Things**

Who are the men and women that become masters over great things? They are those who first of all become masters over little things.

Dollar bills and silver dimes are only little things, so little that they often trickle away in every direction—and yet they have formed the solid foundation for many a comfortable income through the following slogan:

**"DON'T WASTE! SAVE!"**

Start a Savings Account today.

**First State & Savings Bank**  
KLAMATH FALLS, OREGON