



Work more—  
Produce more—  
Save more—

But we can't continue increasing our production unless we continue increasing our railroad facilities.

The farms, mines and factories cannot increase their output beyond the capacity of the railroads to haul their products.

Railroads are now near the peak of their carrying capacity.

Without railroad expansion—more engines, more cars, more tracks, more terminals—there can be little increase in production.

But this country of ours is going to keep right on growing—and the railroads must grow with it.

To command in the investment markets the flow of new capital to expand railroad facilities—and so increase production—there must be public confidence in the future earning power of railroads.

The nation's business can only grow as fast as the railroads grow.

*This advertisement is published by the Association of Railway Executives*

Those desiring information concerning the railroad situation may obtain literature by writing to The Association of Railway Executives, 61 Broadway, New York

A vast amount of work now remains to be done which the intervention of war has necessarily delayed and accumulated, and the result is that very large capital expenditures ought to be made to make up for the interruptions inevitably due to the war and to prepare the railroads to serve adequately the increased traffic throughout the country.  
WALKER D. HINES,  
Director General of Railroads

AT THE CHURCHES

No changes will be made in this column unless the copy is at The Evening Herald office by 5 o'clock Friday evening.

First Baptist Church, corner Washington and Eighth.  
Sunday school at 10 a. m., C. R. DeLap, superintendent.

Preaching at 11 a. m.  
Prayer service Wednesday at 8 P. M. Every second and fourth Wednesday evening will be devoted to missionary work.

B. Y. P. U. Sunday evening at 8 p. m. A cordial invitation is extended to all to attend these services.

Sacred Heart Church, corner 8th and High streets. Rev. Hugh J. Marshall, pastor.

Children's Mass at 8:00  
Adults Mass at 10:10  
Evening service at 7:00

First Presbyterian Church, Corner Sixth and Pine Streets. Rev. E. P. Lawrence, Minister—437 Third St. Phone 429.

Sunday school at 10 a. m.  
Classes for all ages.  
Morning worship 11 a. m. Subject, "Escaping the Whirlwind."  
Evening service 7:30 p. m. Subject, "The New Earth."  
Special music by chorus choir.  
All services in the new church

Lutheran services will be held at Library hall, corner Third and Main, conducted by Rev. M. C. Rossman, pastor, Residence, 929 High St.

Sermon 11 a. m.  
Sunday school at 10:15 a. m.  
Sermon subject: "The Christmas Gospel of God's Grace."  
All are cordially invited to worship with us.

Methodist Episcopal Church, Tenth and High. Rev. S. J. Chaney, pastor, 1117 East street. Phone 67W

Sunday school at 10:00 A. M.  
Morning Worship at 11:00 A. M.  
Junior League at 5:30 p. m.  
Sunday school 10 a. m.  
Epworth League at 6:30 p. m.  
Evening Church Service 7:30 p. m.  
Prayer meeting Wednesday evening at 7:30 p. m.

All are cordially invited to all the services at the Methodist Church.  
The young people can do no better than spend an hour with the League from 6:30 to 7:30 p. m. each Sunday.

First Christian Church, corner Ninth and Pine streets. C. F. Trimble, pastor.

Sunday School, 10 A. M.  
Sermon 11 a. m.  
Christian Endeavor 6:30 p. m.  
Prayer meeting Wednesday evening, 7:30 p. m.

Emmanuel Baptist Church, Eleventh and High streets.

Sunday School 10 a. m.  
Preaching at 11 a. m.  
Prayer meeting Wednesday, at 7:30 p. m.

Woman's Home and Foreign Missionary Society meets first Thursday of each month.  
The Woman's Home and Foreign Missionary Society will meet Thursday, Jan. 8th at 2:30 p. m. at the home of Mrs. Ray Hunsaker, 4th St. You are invited to these services.

The Christian Science Society of Klamath Falls holds services at 113 Fourth street every Sunday morning at 11 o'clock and every Wednesday evening at 7:30. All are welcome.

The subject of lesson for Sunday, "God"  
The Sunday school session is from 9:45 to 10:45 every Sunday morning.  
The free reading room and free lending library is open from 2:30 to 4:30 on Tuesdays, Thursdays and Saturdays.

BONANZA FARM LOAN ASS'N WILL MEET

H. M. Daniels, secretary of the Bonanza National Farm Loan Association, has called a meeting of the stockholders for January 13 next, at Bonanza, at which time the annual election of the officers will be held. Thirty members of the association have received loans, aggregating \$50,000, since its organization. During the last year 50 per cent of the outstanding loans have been repaid, and according to the secretary's announcement there is not a dollar of delinquency on the books of the association.

BEEF PRICES WILL NOT COME DOWN

CHICAGO, Jan. 3.—A shortage of 1,000,000 cattle in 1919 will cause high prices for beef and beef products for at least the next seven years, it is declared by M. F. Horino, statistician for the Union Stockyards, in his annual report. He says it will be impossible to make good the shortage of 1919 before 1927.

ESTRAY  
Came to my place at Pelican Bay, sixteen sheep, some with crop off both ears. Owner can have same by paying for feed and advertising bill's.  
A. PINELLI

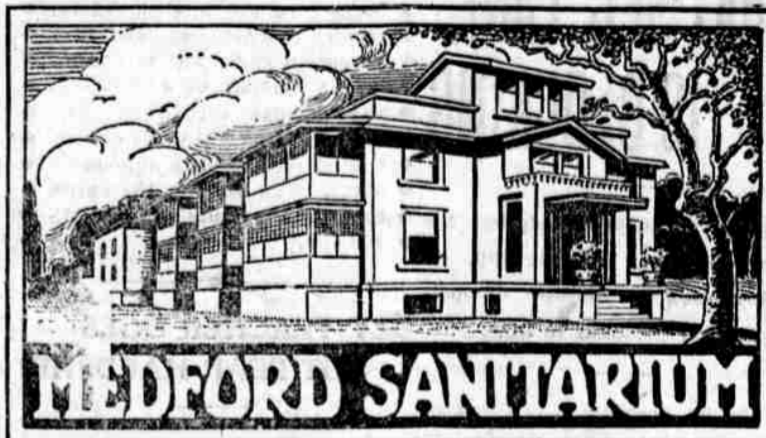
The number of stars that can be seen by the naked eye in both hemispheres is about 6000.

Jazz

Jazz

BIG DANCE

TONIGHT  
AT  
MOOSE HALL  
Kay-Jay Orchestra



Diseases of Women a Specialty.  
MEDFORD, OREGON.

"MY CAKES NEVER FALL--NEVER"



"They're always of feathery lightness and the secret of my success is

Crescent Baking Powder

"It's a different and more convenient powder.

"Callers may interrupt when I'm in the midst of cake mixing, but with Crescent interruptions do not mean failure.

"The Crescent raise awaits oven heat; when the cake is slipped in, the dough rises to perfection—no chance for it to fall, though baking is delayed for hours."

You pay only the pre-war price.  
25c for 1 pound  
\$1.00 for 5 pounds

CRESCENT MANUFACTURING COMPANY  
Seattle, Washington

A New Tire

Here is a tire that is a tire—THE GENERAL CORD. It is guaranteed for 10,000 miles, but you don't have to worry about that. For it will always beat that mark. The next time you buy a tire, buy a General—it's the tire you've been looking for.

We have a full line of accessories here. Drop in and look over.

HOAGLAND & McCOLLUM  
NEXT TO POSTOFFICE

Public Auction

AT

the W. W. Whitlach Ranch 2 miles east of Merrill (Tuesday), January 6, consisting of horses, cattle, sheep, hogs, farming implements and household goods.  
Sale starts at 10.30 sharp.

FREE LUNCH AT NOON

\$20.00 or under Cash. All over \$20.00 credit of 10 months at 8 per cent interest; 5 per cent off for cash on all sums over \$20.

H. C. MOORE, Owner  
C. GUY MERRILL, Auctioneer

CENTRAL MARKET STORE.

Staple and Fancy groceries—fresh cream bread 10c loaf—rice eggs—special Saturday and Sunday 70 cents dozen. 385 Sixth St.

Of the world's population there are between three and four millions who are always on the sea.

MASONS ATTENTION:

There will be a special communication of Klamath Lodge No. 77 A. F. & A. M. at the Masonic Hall, Loomis Building on Monday evening, January 5th, 1920, at 7:30 p. m. Work in E. A. Degree. Visiting Brothers welcome.

GEO. CHASTAIN, W. M.

FEW FOLKS HAVE GRAY HAIR NOW

DRUGGIST SAYS LADIES ARE USING RECIPE OF SAGE TEA AND SULPHUR

Hair that loses its color and lustre, or when it fades, turns gray, dull and lifeless, is caused by a lack of sulphur in the hair. Our grandmothers made up a mixture of Sage Tea and Sulphur to keep her locks dark and beautiful, and thousands of women and men who value that even color, that beautiful dark shade of hair which is so attractive, use only this old-time recipe.

Nowadays we get this famous mixture, improved by the addition of other ingredients by asking at any drug store for a 50-cent bottle of "Wyeth's Sage and Sulphur Compound," which darkens the hair so naturally, so evenly, that nobody can possibly tell it has been applied. You just dampen a sponge or soft brush with it and draw this through your hair, taking one small strand at a time. By morning the gray hair disappears; but what delights the ladies with Wyeth's Sage and Sulphur Compound is that, besides beautifully darkening the hair after a few applications, it also brings back the gloss and lustre and gives it an appearance of abundance.

Surety bonds while you wait. Chilcote & Smith.

Best yet. Herald Want Ads.

RESPONSIBILITIES

The particular duty of the company to its customers is to render satisfactory service; to its employees, to maintain loyalty by fair treatment; to those who own its securities, to maintain integrity of their investment, and to others of the commonwealth, under whose rules and regulations it operates, to convey the information that it is giving them better service for less money than can be obtained in any other way, even under government or municipal ownership. Our business is founded on an economic basis, and if wisely administered and not hampered by unfair treatment can continue mutually beneficial to the customer, to labor, to capital and the commonwealth.

California-Oregon Power Co.

GRIT, BONE, MEAT SCRAPS, EGG MASH FOR CHICKENS

Murphey's Feed & Seed Store  
126 South Sixth St. Phone 87