

INDEPENDENCE OF FILIPINOS NOT CAUSING WORRY

MANILA, Sept. 4. (By The Associated Press.)—Confirmation by Governor Harrison upon the arrival here a few days ago of his recommendations that, in the event that independence is granted to the Philippines, restrictions such as were provided in the case of Cuba by the Platt amendment be embodied in the liberating act and resulting treaty, has, contrary to expectations, aroused practically no hostile comment among the Filipinos.

The native press is remarkably silent on the attitude of the chief executive. The opposition paper, representing the "Partido Democrata," contents itself with pointing out that the attitude of the governor is undoubtedly approved by the Nacionalista party leaders, and, after all, was only to be expected. The Nacionalista papers refrain from any comment whatsoever, favorable or otherwise.

Governor Harrison's statement upon his arrival here as carried by the local press is as follows:

"The recommendation that early independence be given the Philippines under an arrangement similar to the Platt amendment for Cuba was made by me officially as governor-general of the islands and is also my personal recommendation. The recommendation, and this point I took pains to make clear to Congress, was not presented by me as representing the opinion of the Filipino people nor as representing that of my superiors.

"Naturally I am not in a position to come back with any promises as to a date for the granting of independence," continued the governor

CENSUS FIELD WORKERS NEEDED

The director of the census, Hon. Sam L. Rogers, announces that 80,000 enumerators will be needed to take the next census. The work begins on January 2 and will last about two weeks in cities, and a month or more in rural districts. Rates of pay will vary, depending upon the locality and character of the district to be canvassed. The average pay per enumerator at the census of 1910 was about \$70. At this coming census it will probably be not less than \$100.

"Active, intelligent and reliable men and women, not less than 18 years of age, are needed for this task," said Director Rogers, "and, in a sense, this is a call for volunteers. The importance of a complete and reliable census, especially in these critical times when more than ever before perhaps we need complete data regarding population, conditions, tendencies, and resources, can hardly be over emphasized. The reorganization of the social and economic structure and the readjustment of international relations necessitated by the war must be based on accurate knowledge if we are to act wisely and deal justly with all classes and all interests. It is hoped, therefore, that public-spirited, energetic people throughout the country will volunteer to act as census enumerators even though they may not care for the positions so far as the

pay is concerned. I should be sorry to think, and I do not believe, that all our patriotism was used up by the war and none left over for public service in time of peace."

W. A. Terrall, supervisor of the census for the second district of Oregon, which includes the counties of the second congressional district, states that he will need about 14 enumerators for Klamath county. Applications or requests for application forms should be sent to him immediately. His address is Wasco, Oregon. As a test of their fitness for the work applicants will be required to fill out a sample schedule and will be duly notified of the time and place for the test. So far as practicable the place selected will be one which is easily accessible.

Two feet is the usual stride of an ostrich, but when the bird is alarmed and begins to run it changes its mincing stride for 14-foot steps, which carry it over the ground at a rate of 25 miles an hour.

Football is almost as popular in Burma as it is in England and in America. The natives play the game with bare feet.

MODISH VEIL AND HAT



A pleasing effect for driving or street wear this fall. The veil is dotted with a fine mesh. Briscoe car \$475 at Howie's. Just giving it away. 24-2t

NEW VICTORY BLUE - TAILLEUR SPORTS FUR



The tailleur is what American women have always looked for. It means "that one best suit"—suitable for most any occasion. This one in the new victory blue duvetyne is trimmed with bands of fur. The skirt contrives pockets in a yoke effect to be different, while a smart turban with crown of many colored flowers adds a touch of savoy, says Fashion Art.

Half-price sale on Player Piano music I. R. S. excepted, at Earl Shepherd's. 23-2t

Fifty-two different varieties of oak grow in Asia Minor and half of these are to be found in no other parts of the world.

AT THE CHURCHES

No changes will be made in this column unless the copy is at The Evening Herald office by 5 o'clock Friday evening.

First Baptist Church, corner Washington and Eighth. Sunday school at 10 a. m., C. R. DeLap, superintendent.

Proaching at 11 a. m. Prayer service Wednesday at 8 P. M. Every second and fourth Wednesday evening will be devoted to missionary work.

B. Y. P. U. Sunday evening at 8 p. m. A cordial invitation is extended to all to attend these services.

Sacred Heart Church, corner 8th and High streets. Rev. Hugh J. Marshall, pastor. Children's Mass at 8.00. Adult's Mass at 10.30. Evening service at 7.00 p. m.

First Presbyterian Church, Corner 3rd and Pine. Rev. E. P. Lawrence, Minister—437 Third Street. Phone 429.

Sunday school at 10 a. m. Morning Worship 11 a. m. Subject "Not Yours, but You."

Mr. Wells, director at the First Presbyterian Church of Portland, will play a violin solo at this service, and will accompany the congregational singing with his violin in the evening.

Evening Service 8 p. m. Subject "Call to Service." "Russia A World Problem," will be shown in moving pictures. This is a Red Cross presentation of the turmoil in interior of Russia. It will be worth while to see it and hear the message.

A cordial invitation is extended to any who have no other church home to worship with us.

Lutheran services will be held at Library hall, corner Third and Main, conducted by Rev. M. C. Rossman, pastor, at 11 a. m.

Sunday school at 10:15 a. m. Sermon by the Rev. Jul. Huchhausen of Tacoma, Washington. All are cordially invited to worship with us.

Methodist Episcopal Church, Tenth and High. Rev. S. J. Chaney, pastor, 1117 East street. Phone 47W. Sunday school at 10.00 A. M. Morning Worship at 11.00 A. M. Junior League at 5.30 P. M. Epworth League at 6.30 P. M. Evening Church Service 7.30 P. M. Prayer meeting Wednesday evening at 7.30 P. M.

All are cordially invited to all the services at the Methodist Church. The young people can do no better than spend an hour with the League from 6.30 to 7.30 p. m. each Sunday.

First Christian Church, corner Ninth and Pine streets. C. F. Trimble, pastor. Sunday School, 10 A. M. Sermon 11 A. M. Christian Endeavor, 7 P. M. Prayer meeting Wednesday evening at 8 P. M.

C. F. Trimble, Pastor

Emanuel Baptist Church, Eleventh and High streets. Sunday School 10.00 a. m. Young peoples meeting at 7 p. m. Prayer meeting every Wednesday at 7.30 p. m.

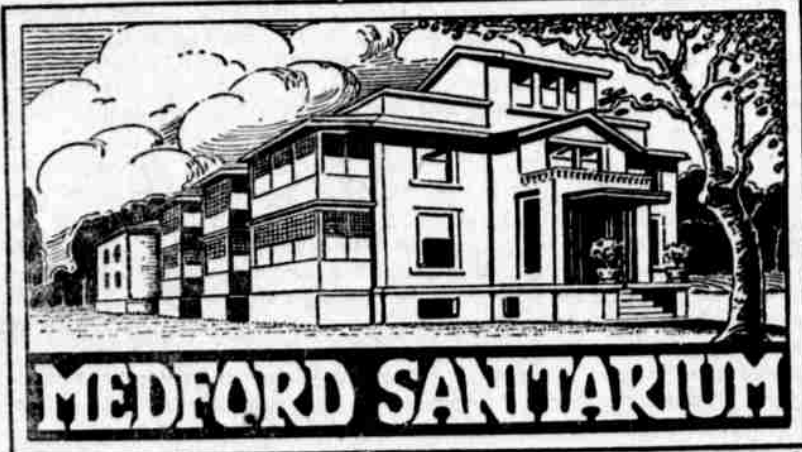
Womans Home and Foreign Missionary Society meet first Thursday of each month. You are invited to these services.

The Christian Science Society of Klamath Falls holds services at 111 Fourth street every Sunday morning at 11 o'clock and every Wednesday evening at 7:30. All are welcome. The subject of lesson for Sunday, "Probation after Death."

The Sunday school session is from 9:45 to 10:45 every Sunday morning. The free reading room and free lending library is open from 2:30 to 4:30 on Tuesdays, Thursdays and Saturdays.

See Shepherd's used phonograph cash bargains. 17t

In Mexico the school children are given daily lessons in politeness and are taught to utter all manner of pretty speeches.



MEDFORD SANITARIUM

Diseases of Women a Specialty. MEDFORD, OREGON.

NOTICE TO SHEEP MEN

WE ARE HEADQUARTERS FOR THE CELEBRATED

BLACK LEAF 40 SHEEP DIP

FOR SCABIES, TICKS OR LICE ON SHEEP

The Dip recommended, and recognized by the United States Bureau of Animal Industry in Official Dipping of both Sheep and Cattle for scabies.

IN STOCK AND READY FOR IMMEDIATE DELIVERY

Secure Your Requirements of Us

Merrill Mercantile Co.

General Merchandise MERRILL, OREGON

WHEN YOU WAKE UP DRINK GLASS OF HOT WATER

Wash the poisons and toxins from system before putting more food into stomach.

Says inside-bathing makes anyone look and feel clean, sweet and refreshed.

Wash yourself on the inside before breakfast like you do on the outside. This is vastly more important because the skin pores do not absorb impurities into the blood, causing illness, while the bowels pores do.

For every ounce of food and drink taken into the stomach, nearly an ounce of waste material must be carried out of the body. If this waste material is not eliminated day by day it quickly ferments and generates poisons, gases and toxins which are absorbed or sucked into the blood stream through the lymph ducts which should suck only nourishment to sustain the body.

A splendid health measure is to drink, before breakfast each day, a glass of real hot water with a teaspoonful of limestone phosphate in it, which is a harmless way to wash these poisons, gases and toxins from the stomach, liver, kidneys and bowels; important to keep clean and pure on thus cleansing, sweetening and freshening the entire alimentary canal before putting more food into the stomach.

A quarter pound of limestone phosphate costs but very little at the drug store, but is sufficient to make anyone an enthusiast on inside bathing. Men wake up with a dull, aching head or have furred tongue, bad taste, nasty breath, sallow complexion; others who have bilious attacks, acid stomach or constipation are assured of pronounced improvement in both health and appearance shortly.—Adv.

Let Me Do Your Concrete Work

USING

SHASTA SAND

EXCLUSIVELY

When you have your work done with Shasta Sand you know you have the best there is

AL. F. GRAHAM