

The Evening Herald

E. J. MURRAY EDITOR

Published daily except Sunday by The Herald Publishing Company of Klamath Falls, at 115 Fourth street

Entered at the postoffice at Klamath Falls, Ore., for transmission thru the mails as second-class matter

Subscription terms by mail to any address in the United States: One year \$5.00 One month .50

Member of the Associated Press The Associated Press is exclusively entitled to the use for republication of all news dispatches credited to it or not otherwise credited in this paper, and also local news published herein. All rights of republication of special dispatches herein are also reserved.

MONDAY, JUNE 30, 1919.

At the Theatres

"Pretty Smooth" with Priscilla Dean as the star, will be at the Liberty tonight as half of the big double bill "Pretty Smooth" was written by Hayward Vellier, author of "Within The Law" which in itself is a guarantee of the real worth of the play. The other big feature is "Regeneration" starring Rockcliffe Fellowes, who is ably supported by Anne Q. Nilsson and an all Star cast. A Stan Laurel comedy completes an interesting program.

Rockcliffe Fellowes, who plays the leading part in "The Regeneration," has had a remarkable career. Mr. Fellowes hails from Ottawa, Canada, where he was a clerk of one of the leading banks in that city. He is still a young man, not yet thirty years of age. Mr. Fellowes belonged to a dramatic club in his home city, and his acting attracted more than passing attention. Gifted with a handsome face and a magnificent athletic body, he attracted attention. After forsaking the bank for the stage, his rise was rapid in within a couple of seasons he was playing the leading part in a Broadway success and as a Broadway matinee idol.

His first picture work is in "The Regeneration," and he has fulfilled every expectation held when he was first engaged. In "The Regeneration," Mr. Fellowes is cast as Owen Conway and this character gives wide scope for his excellent and unusual histrionic abilities. At the Liberty tonight.

ANOTHER DOUBLE BILL AT THE LIBERTY.

Do you want a big evening's entertainment? Then come to the Liberty Theatre tonight and see the big double show. Priscilla Dean in "Pretty Smooth" is one of the big features to be followed by "Regeneration," Owen Kildare's great story. There will also be a fine comedy with Stan Laurel doing the heavy. As there will only be one show on account of the length of the program everyone is urged to come early to enable you to see the entire program. Doors open at seven sharp, pictures start at seven thirty.

Vogan's Marshmallow Whip advertisement featuring an illustration of a woman and a product jar.

FIGHTING FACES



This composite picture shows how champion Jess Williams and challenger Jack Dempsey will look as they face each other in the earnestness of battle for the fistie honors and title as king in all fistie realms. Both these snapshots are from the training camps at Toledo, O., where the big bout is to be staged July 4.

CUB LEADERS ARE CALLED TO CONFER

OREGON AGRICULTURAL COLLEGE, Corvallis, June 30.—County boys' and girls' club leaders from all part of Oregon have been called to meet in conference June 25-July 1, by H. C. Seymour, state club leader, O. H. Benson, national club leader is expected to be present from Washington and assist in instructional work. The county leaders will receive special training in demonstration work which they will give to their local leader later in the summer. Regular summer school classes in club work will also be available for those who desire it. The following leaders will attend:

Frank Sexton, Klamath; R. E. Morris, Jackson; Wilford Brown, Douglas; E. R. Peterson, Coos; Floyd L. Senter, Lane; John W. L. Smith and Mrs. M. L. Walkerson, Marion; Miss R. P. Snedeker, Clackamas; Ethel Calkins, Multnomah; E. Morgan, Wasco; P. M. Nash, Linn; A. C. Strange, Baker; N. C. Maris and W. C. Hoppes, state department of education.

THE MUTUAL LIFE.

Insurance Company of New York began business in 1843. Long-established, financially impregnable, and with policies that are up-to-the-minute and service to policy holders and beneficiaries that is unexcelled. For full particulars regarding our methods and new policy contracts see GEO. C. ULRICH, DISTRICT MANAGER for Klamath County, office over First State and Savings Bank. 19-10\*

HOUSTON'S Metropolitan Amusements

HOUSTON'S OPERA HOUSE DANCING Wednesday & Saturday Nights. JAZZ MUSIC.

STAR THEATER

TODAY—Goldwyn Presents MABEL NORMAND —In— "A PERFECT 36." Her Figure was her Fortune —Also— A Big V. Special Comedy "Damsels and Dandies."

TEMPLE THEATER

TODAY—Triangle Presents LOUISE GLAUM —In— "GOLDEN RULE KATE" A Real Western Thriller —Also— Pathe News and A Good Comedy.

MERRILL OPERA HOUSE

MOTION PICTUREs TUESDAYS AND SATURDAYS Merrill, Oregon

Mr. C. L. McWilliams has received one new 1919 Liberty Six. He expects a car load in the near future. 30-1

How refreshing is a mineral bath, after a dusty drive. 17

BIG CELEBRATION

DANCE

FRIDAY NIGHT JULY 4TH, 1919

At MALIN HALL

Music by M. Dobry Orchestra

A Good Time For Everybody.

BE PRETTY, TURN GRAY HAIR DARK

TRY GRANDMOTHER'S OLD FAVORITE RECIPE OF SAGE TEA AND SULPHUR

Almost everyone knows that Sage Tea and Sulphur properly compounded, brings back the natural color and lustre to the hair when faded, gray or streaked. Years ago the only way to get this mixture was to make it at home, which is messy and troublesome. Nowadays, by asking at any drug store for "Wyeth's Sage and Sulphur Compound," you will get a large bottle of this famous old recipe, improved by the addition of other ingredients, for about 50 cents.

Don't stay gray! Try it! No one can possibly tell that you darkened your hair, as it does it so naturally and evenly. You dampen a sponge or soft brush with it, and draw this through your hair, taking one small strand at a time; by morning the gray hair disappears, and after another application or two, your hair becomes beautifully dark, glossy and attractive.

GOVERNMENT TROOPS QUELL SPARTICANS

BERLIN, June 28.—Government troops that were ordered to Hamburg to suppress disorders there reached the suburbs of that city this morning. The troops ordered an immediate cessation of all hostilities, the release of all prisoners and the delivery of weapons.

JEWISH MASSACRES MAY BE INVESTIGATED

WASHINGTON, June 28.—President Wilson advised the Senate today that the state department that he was considering the sending of an investigating commission to investigate the reports of Jewish massacres.

Come to Fort Klamath JULY 4

This is our first celebration, and it is going to be a hummer.

Horse Races-Bucking Contests, Foot Racing—a little of everything that goes to make a real lively celebration.

Fishing finest in history.

Pack that Picnic Basket and come to Chiloquin for the time of your life.

FORT KLAMATH BUSINESS MEN'S ASS'N

PHONE 41

PHONE 290

FURNITURE

Both New and Second Hand

PERKINS FURNITURE HOUSE

"The Furnisher of Happy Homes"

120-126 N. 6th St.

Klamath Falls, Oregon

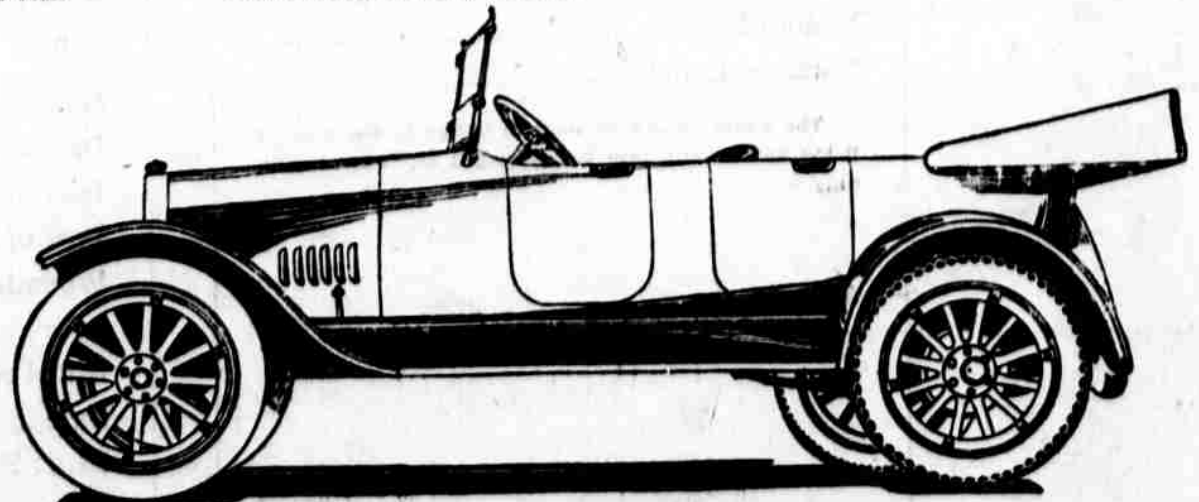
ANNOUNCING THE ARRIVAL Of Our New Line of Automobiles

CROW-ELKHART Multi-Power

A beautiful, comfortable, powerful car at a price which is in itself wonderful. Every modern feature of a high-class car at a price which will fit your purse. See these cars, take a ride, and you, too, will become enthusiastic. Full guarantee and service.

SPECIFICATIONS:

- MOTOR—Four cylinder, L head type, Multi-Powered; bore 3 1/2 inches, stroke 5 inches. ELECTRICAL EQUIPMENT—2-unit, 6-volt system direct drive applied to fly wheel. CLUTCH—Borg & Beck, smooth working, self-lubricating enclosed. WHEELBASE—115 inches. THREAD—56 inches. WEIGHT—Approximate shipping weight, 2295 pounds. GEAR RATIO—4 1/4 to 1. FRONT AXLE—Drop-forged, 1" beam running on heavy bearings. REAR AXLE—Full floating, 2 1/4 inch steel tubing, 1 1/2 inch chrome nickel steel shafts. Bevel drive pinion and ring gear of 3 1/2 per cent nickel steel. Truss rod on rear axle. REAR SPRINGS—Semi-elliptic, underslung, 52 inches long, fixed at front to transmit drive. Shackles at rear hub drums. Diameter of drum, 12 inches. FRONT SPRINGS—Semi-elliptic, 36 inches long, 2 inches wide, fixed at front and shackled at rear, with hick oil bolts. PROPELLER SHAFT INSTALLATION—Theroid-Hardy Fabric Flexible Coupling Joints, eliminating any possibility of universal joint trouble; requires no lubrication. BODY—Invisible hinges; upholstered instrument board; frame white ash, covered with silver finished sheet steel; fenders enamel and body coach-finished. CUSTOM MADE IN TEN ATTRACTIVE COLORS.



CHAS. DONART

TEMPORARY LOCATION:

230 Main Street.

Just Above Postoffice.

Let us give you a Demonstration.

DEALERS FOR KLAMATH AND JACKSON COUNTIES

GLASS

Let me give you a price on youjob—big or little. I am prepared to put in glass from the smallest pane to the largest plate glass store front—also windshields, headlights, mirrors, re-silvering—everything connected with glass. I will make to your order screens of every description, store doors, sash and cabinet work. I'll save you money if you will take the trouble to phone 346-W.

E. C. STUCKY

1140 MAIN STREET.