

Sensitive Scales

The scientific compounding of prescriptions often demands that weights be true to 1-100th part of a grain. Skill and accuracy are absolutely required.

Our prescription scales are the best—and are subjected to frequent tests. We cite this fact—because we wish to impress upon you the careful service which is observed in the filling of prescriptions at our store.

Care Counts.

Underwood's Pharmacy
KLAMATH FALLS, OREGON
WHERE PARTICULAR PEOPLE BUY THEIR DRUGS

New City Laundry

WE GUARANTEE OUR WORK
Shirts and Collars Laundered
We also wash silk, wool and colored goods very carefully. Try us once and be convinced. Our prices are right. Phone 154.

127 Fourth Street
Back of First National Bank

CONTRACTING IN CONCRETE

Cement Work of all Kinds and Roofing

Let Me Make You an Estimate

W. D. MILLER
Contractor

Passengers and Baggage

ANYWHERE IN THE CITY
QUICK SERVICE
REASONABLE RATES
PHONE 187

Western Transfer Co.

The Greatest Tractor Made



THE MOLINE
UNIVERSAL TRACTOR
JOHN M. LEWIS, Agent
6th and Main Phone 140

PLUMBING

STEAM FITTING
SHEET METAL
FURNACE WORK

Pumping and Irrigating

Plants of All Kinds
Estimates Cheerfully
Furnished

Contracts Taken

G. C. LORENZ
123 North 6th St.

MONTHLY WAR STAMP QUOTAS FIXED FOR TWELFTH DISTRICT

The Treasury Department has assigned to the Twelfth Federal Reserve District the following monthly quotas to be raised in War Savings Stamps during 1919:

January	\$ 4,200,000
February	4,800,000
March	5,400,000
April	6,000,000
May	6,600,000
June	7,200,000
July	7,800,000
August	8,400,000
September	9,000,000
October	10,800,000
November	12,000,000
December	13,200,000
Total	\$96,000,000

The total to be raised throughout the country is \$1,600,000,000.

CROPS THRUOUT THE NORTHWEST DISTRICT GOOD

FREQUENT RAINS KEEP SOIL IN MANY SECTIONS TOO WET TO BE WORKED—GRAIN OVER STATE COMING GOOD.

PORTLAND, April 26—Many crops will be planted later than usual this season in Oregon, owing to a tendency toward backwardness in weather conditions, according to the weekly summary of the weather bureau on weather and crop conditions, issued here. The temperature was generally somewhat above normal but no extremely high temperature was experienced and the general impression in many places was that the weather was unseasonably cool. Some frost occurred several mornings.

There was rather less than the usual amount of sunshine, weather records show, and rain was of frequent occurrence over a large part of the state, keeping the soil too wet to be worked. In the western counties, farm work is unusually backward. Plowing for summer fallow is well advanced in northeastern counties.

Winter wheat, rye and oats have made satisfactory growth. Over most of the state growth has been slow but in Morrow county much of the winter grain is jointed and some is in the boot. Wire worms continue to injure winter wheat in Jefferson county. Seeding of spring wheat, oats and barley is progressing slowly, especially in western counties and the acreage will be reduced by the backward state of farm work. There is ample moisture for the germination of grain already sown in most sections. A small acreage in Lake county was blown out by high wind. Ground is being prepared for corn.

Apricots, peaches, early cherries and a few early varieties of apples are set in the milder localities. Pear bloom is beginning to fall. Apples and prunes are in bloom in most of the commercial fruit districts. Reports concerning frost damage are meager but it is thought that no serious damage has been done except to peach, apricot and early strawberry bloom in a few localities. Fear is expressed that rain may have interfered with pollenization of prunes in Linn county.

Grass and hay crops made good growth. Alfalfa is six inches high in Malheur county. Irrigation of alfalfa is in progress in Lake county. The lower ranges are furnishing ample subsistence for stock.

Lambing continues, under favorable conditions. Shearing is in progress in northeastern counties.

Stock is making good gains. Planting of early potatoes and garden vegetables was delayed by wet soil. Early gardens are growing slowly.

By making the Adriatic "an inland sea" Italy provides a practical solution for one of the world's most interesting waterways problems.

With the return of peace there will be a resumption of the season of piano recitals that makes some of us really wish the war had kept on.

Talking about after-war wage conditions—just see the ease with which a lot of men who have been working for a dollar a year are getting good jobs.

Two million American women were engaged in war work. But it is hoped by husbands and prospective husbands that they have not absorbed a warlike spirit permanently.

Lloyd George says it was the German army that started the war, but of course there is no occasion for us ostentatiously to call attention to what army stopped it.

France offers an education in French to American soldiers who are detained over there. Some of our girls over here fear they may already know too much of the language!

Come and have a good time. This means you. Hot Springs Bath House. It

COMB SAGE TEA INTO GRAY HAIR

DARKENS BEAUTIFULLY AND RESTORES ITS NATURAL COLOR AND LUSTRE AT ONCE

Common garden sage brewed into a heavy tea, with sulphur and alcohol added, will turn gray, streaked and faded hair beautifully dark and luxuriant. Mixing the Sage Tea and Sulphur recipe at home, though, is troublesome. An easier way is to get the ready to use preparation improved by the addition of other ingredients costing about 50 cents a large bottle, at drug stores, known as "Wyeth's Sage and Sulphur Compound," thus avoiding a lot of fuss.

While gray, faded hair is not sinful, we all desire to retain our youthful appearance and attractiveness. By darkening your hair with Wyeth's Sage and Sulphur Compound, no one can tell, because it is done so naturally, so evenly. You just dampen a sponge or soft brush with it and draw this through your hair, taking one small strand at a time; by moving all gray hairs have disappeared. After another application or two your hair becomes dark, glossy, soft, and luxuriant, and you appear years younger.

FINE RECORD FOR OREGON TOWN
SAN FRANCISCO, April 26—Lostine, Oregon, was the first town in the Twelfth Federal Reserve District to report "quota raised," in the Victory Loan. The telegram was signed "Edgar Marvin," and it was on hand last Monday morning when Liberty Loan headquarters was opened.

Chili Parlor

NOODLES
Chili Con Carna
Tamales Enchilades
Fine Pastry
Good Coffee

Phone orders taken for Salads and Fishermen's Lunches

Delicatessen Lunches served as you like them.

PHONE 446

Just around the corner on 7th.

We cater to Ladies and Gentlemen
PHONE 446

O. E. Rao Arnold V. Hake

GRANT COUNTY LEADS WITH VICTORY LOAN

PORTLAND, Oregon, April 26—Grant County with a quota of \$99,000 has subscribed \$15,040 to the Victory Loan. This makes Grant the leader of Oregon in percentage subscriptions for any county.

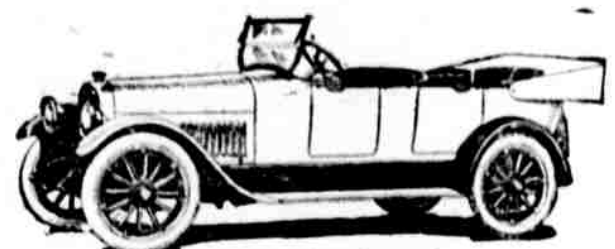
State Director of Organization, Etheridge, reported twenty-three counties to have completed their quotas at noon today. Crook and Clatsop Counties completed their quotas today.

Crane, Harney County, with a population of two hundred people, reports one hundred subscriptions.

In Portland, six hundred merchants participated in a window display campaign in the interest of the Victory Loan. Six awards of German helmets were made for the best displays. The artistic effect of the displays was such as to make window shopping unusually popular on the downtown streets.

We are always on the job ready to take care of your fire insurance. Call-cote & Smith, 633 Main st. 9-11

Studebaker



This is America's most popular LIGHT-SIX.

One look—one ride in this model will convince you.

All we ask is that you compare values. If you are looking for the highest grade LIGHT-SIX on the market—here it is.

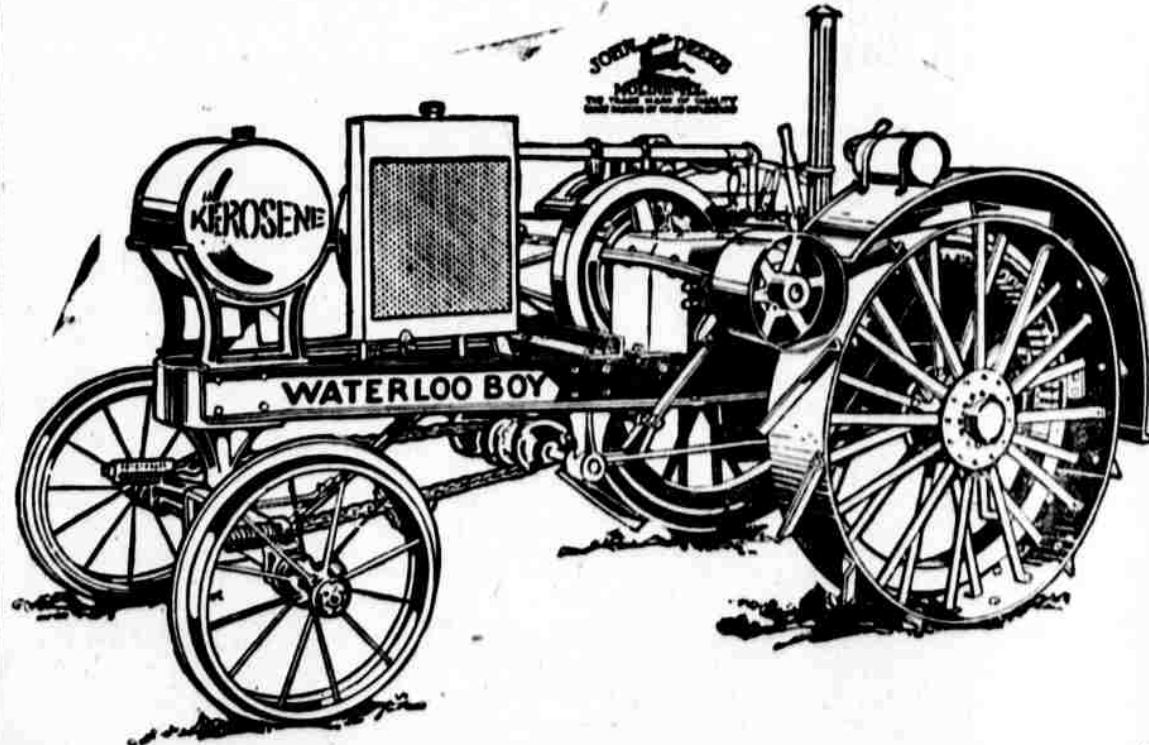
The LIGHT-FOUR The LIGHT-SIX SEVEN-PASSENGER SIX

All Prices f. o. b. Detroit

DUNHAM AUTO CO.
403 W. Sixth St.
KLAMATH FALLS, OREGON

Repair Department

Our repair department is exclusively controlled by Morrison and Peterson. These men are expert machinists and electricians, will give you guaranteed service, and their charges will be reasonable.



Dobbin to the Pasture

Don't feed expensive hay and grain to horses when you can do more work for less than half the price with a

Waterloo Boy Tractor

Baldwin Hardware Co.

THE HOUSE OF QUALITY

Pay a Visit to the JEWEL CAFE

HIGH QUALITY, QUICK SERVICE
COZY AND CLEAN

EVERY DELICACY OF THE
SEASON SERVED

JESSE BAILEY, Prop.

Phone 185 610 Main St.

Full Sugar, Half Sugar, Golden Tankard
MAMMOTH LONG RED and TABLE VARIETIES

BEETS

Murphey's Feed & Seed Store
126 South Sixth St. Phone 87