

The Evening Herald

E. J. MURRAY
EDITOR

Published daily except Sunday by
The Herald Publishing Company of
Klamath Falls, at 115 Fourth street.

Entered at the postoffice at Klamath
Falls, Ore., for transmission thru
the mails as second-class matter.

Subscription terms by mail to any
address in the United States:
One year.....\$5.00
One month......50

Member of the Associated Press
The Associated Press is exclusively
entitled to the use for republication
of all news dispatches credited to it
or not otherwise credited in this
paper, and also local news published
herein.

All rights of republication of special
dispatches herein are also re-
served.

THURSDAY, MARCH 20, 1919

NOW FOR THE COMMERCIAL CLUB

The good roads movement is far
enough along on its way to success
to justify the statement that it can
take care of itself. The Highway
Commission and the County Court
know that the people of the county
want roads, good roads, permanent
roads, and the calibre of the
men on the Commission and County
Court is big enough, broad
enough, safe enough, practical
enough to carry to completion the
mandate of their fellow citizens.
With this belief, The Herald would
turn its attention to the matter of
reviving the Commercial Club.

There never was a better time
for the rehabilitation of the Com-
mercial Club nor a time when we
needed one more. Portland stands
ready to lend its aid in carrying out
any policy in which it can be of as-
sistance, and we are going to need
a lot of it, for we have the Natron
cut-off, the Strahorn Railroad, the
Modoc Northern, the opening of the
Indian Reservation, the mapping
creation and improving of a factory
district for Klamath Falls. These
are a few of the big problems we
must now face and solve. All of
these are fundamental projects that
we must have if we are to start on
the upward road that is to lead us
to the goal of the second city in
size, as we now are the second com-
mercial city of Oregon. These things
can be secured without the aid of a
Commercial Club, but it would call
for the placing of a burden on the
shoulders of a few that should be
borne by the many. These are com-
munity and by "Community" we
mean the entire county.

Too often will be heard the charge
that Klamath Falls is selfish and
wants everything for itself. But
this is a thoughtless remark. The
Strahorn line, for which Klamath
Falls has contributed so heavily, is
not a Klamath Falls project. It is a
county undertaking. The same is
true of all of the other projects
enumerated, with the possible ex-
ception of the factory district, and
this is, indirectly, of as much im-
portance to the county as is any of
the others. That is why the Com-
mercial club should be a county-
wide organization. It should become
part of the State Chamber of Com-
merce, and members of the State
Chamber of Commerce should be in
every section of the county, for we
are going to ask for many things
from this state organization. The
cost of belonging to both is merely
nominal, but the benefits gained will
be of immeasurable value.

Let us, therefore, get busy with
the Commercial Club. The time is
at hand when we must do something,
for large interests are knocking at
the door of Klamath Falls.

Next Monday and Tuesday the
Men's Glee Club of the University
of Oregon will be here for the pur-
pose of giving a concert. Ordinarily
this is only of passing interest, but
in this particular instance there is
more back of their coming than
mere business. This club comes here
for the first time on special invita-
tion by residents of Klamath Falls
who know its real worth, for one
reason, and because they saw a
chance to spread the fame of Klamath
Falls still further. The mem-
bers of the club are capable of help-
ing this city materially in many
ways. From a purely selfish interest
it will be a good investment to pa-
tronize the entertainment liberally.
Aside from the material point of
view, its artistic value is well worth
any price charged. Lovers of good
music will be royally entertained,
and those who are not lovers of the
classical will hear plenty to please
the ear and quicken the pulse. Give

them a royal welcome, so that they
can return home and say "Those
people at Klamath Falls are made
of the right kind of stuff."

Klamath County has proven that
it can get together on one proposi-
tion—good roads. Now let us get to-
gether on the question of securing
more factories. Let us provide a
district where they can be located.
This is going to require considerable
work and improvement, but the re-
sultant gain will be so tremendous
that the cost will be a mere bagatelle.
If we go at it right we can
build a city here in a few years that
will surprise the most optimistic.
This is work for the Commercial
Club. Furnish sites that are conven-
ient and suitable and the factories
will come. Two are in sight right
now, four more in the not distant
future and one more within a reason-
able period. All of them, however,
will have to be located, and the place
to put them is right here in Klamath
Falls—not in the woods. Don't
let us continue making the mistake
that has been made during the past
years. It is to the advantage of the
manufacturers, as well as to our ad-
vantage, that the mills stay within
the city's limits. Let us show them
this is true, and then let us be ready
with the sites.

MANY OREGON BOYS SLATED TO RETURN

WASHINGTON, D. C., March 20.—
The assignment of practically all the
units of the 91st Division and several
organizations of the 50th Army
Corps for early convey home has
been announced here. There are
thousands of Oregon men in the
91st division. The war department
has announced that the 147th re-
giment of Field Artillery originally
with the 41st Division, is scheduled
to return in May. This regiment in-
cluded the old batteries A and B of
the Oregon National Guard.

Real-Fruit Desserts

Jiffy-Jell is flavored with
fruit juice essences in
liquid form, in vials.
A wealth of fruit juice
is condensed to flavor
each dessert. So it brings
you true-fruit dainties,
healthful and delicious, at
a trifling cost.
Simply add boiling
water.
Compare it with the
old-style gelatine desserts.
It will be a delightful re-
velation.
Get the right kind—
Jiffy-Jell
10 Flavors, at Your Grocer's
2 Packages for 25 Cents

RECKARD RENT SERVICE

Phone 59
Night Phone 845

BRIGHTEN UP

By using Westinghouse Mazda
Lamps in ALL your sockets.
We make a specialty of fitting
you out with the proper type,
size and voltage that will give
you the most light for the least
money, and we will make free
delivery on lamp purchases
amounting to \$1.75 or over.
We give a Rogers Silverware
ticket with each 25-cent pur-
chase.

Link River Electrical Co.

7th and Main Sts.

KLAMATH FALLS BRANCH OF MASON, EHRMAN & CO.

Wholesale Grocers
TOBACCO, CIGARS,
CIGARETTES
Office 120 S. 6th St. Phone 87
E. H. JEFFERSON
Local Manager

PERSONAL MENTION

LITTLE SIDELIGHTS ON LOCAL HAPPENINGS
AMONG THE PEOPLE OF THIS CITY AND VICINITY.
GOINGS AND COMINGS OF LOCAL FOLKS

Mr. and Mrs. R. M. Vaughn are
Klamath Falls visitors from Algoma.

W. H. Roark is down for a few
days from Modoc Point on matters
of business.

B. F. Bell is a recent arrival from
Davis, California. He is stopping at
the Hotel Hall.

C. R. Decker and W. Bailey are re-
gistered at the White Pelican Hotel
from San Francisco.

I. E. Kesterson a lumberman from
the Worden section is transacting
business in this city.

James Hill was among the train
arrivals last night from Chicago. He
is a guest at the Hotel Hall.

Mr. and Mrs. R. G. Churchill came
in yesterday from Algoma. They left
this morning for Reno, Nevada.

Rhinehart Motschenbacher, a well
known Klamath Falls boy who
has been in the military service has
returned from Camp Lewis.

Mrs. Austin Hayden left on the
train this morning for Stockton and
San Francisco. She expects to be
gone for a month or six weeks.

Justice N. J. Chapman went to
Dorris today to attend a stockhold-
ers meeting of the Enterprise Land
Company. They will return this
evening.

Reynolds Mose from Modoc Point
is spending a few days in the city
having come in to boost for good
roads.

See Charles S. Hood, Klamath
Agency, the real estate agent. He
will write your contracts and other
legal papers. 12-1f

HOUSTON'S Metropolitan Amusements

HOUSTON'S
OPERA HOUSE
DANCING SATURDAY EVENING
JAZZ MUSIC

STAR THEATER

—TODAY—
Select Pictures Corporation
Presents
NORMA TALMADGE
—In—
"DE LUXE ANNIE"
—Also—
A Two-Reel Keystone Comedy.
Admission 10 and 20 cents. Show
Starts 7:30 and 9:15.

TEMPLE THEATER

—TODAY—
WILLIAM S. HART
"WOLF LOWRY"
—Also—
PATHE NEWS.
Admission 10 & 15 cents Matinee
2:30. Evenings 7:30 & 9.

MERRILL OPERA HOUSE

MOTION PICTURES
TUESDAYS AND SATURDAYS
Merrill, Oregon

LIBERTY THEATER

"THE PICK OF THE PICTURES"
H. W. POOLE, Owner

TONIGHT
"IN JUDGMENT OF"
Starring Franklyn Farnum
"WHO GOT STUNG?"
With Charlie Chaplin
"JUST LIKE FATHER"
Christy Comedy

The Great George Walsh in
"ON THE JUMP"

Admission 10c and 20c
A child accompanied by par-
ent admitted free with a 20c
ticket, except Saturday night
and Sunday night.
MR. HARRY BOREL
Musical Director

Private William M. Hays came in
last evening on the train from Camp
Lewis. He is a guest at the White
Pelican Hotel.

H. Weinmark is among the visi-
tors from the outside county dis-
tricts. He is registered at the Hotel
Hall from Mallin.

Mr. and Mrs. J. R. Lentz left to-
day for Santa Barbara, California,
where they expect to remain for
the next ten days.

Mrs. R. M. Fitzgerald and daugh-
ter are among the county seat visi-
tors today from Chiloquin. They are
registered at the Hall.

F. Floyd, F. Bodenhamer, D. G.
Givan, P. O'Connor and Maurice
Keane are in the county seat for a
short time from Merrill.

Rhinehart Motschenbacher, a well
known Klamath Falls boy who
has been in the military service has
returned from Camp Lewis.

Mrs. Austin Hayden left on the
train this morning for Stockton and
San Francisco. She expects to be
gone for a month or six weeks.

Justice N. J. Chapman went to
Dorris today to attend a stockhold-
ers meeting of the Enterprise Land
Company. They will return this
evening.

Mrs. W. L. Graves who has been
here for several months visiting at
the home of Mrs. Chas. Graves, left
this morning for her home at Lan-
slaw, Oregon.

Mr. and Mrs. J. O. Goldthwaite
are down from the Modoc Lumber
Company at Chiloquin for a short
visit. They are guests at the White
Pelican Hotel.

R. J. Smith, an official of the
Southern Pacific Company with
headquarters at Sacramento, came
in last evening on matters of busi-
ness for the Company.

Nate Shandling arrived last night
in the city from Portland. He has
been identified with the U. S. Mar-
ines for several months but has now
received his discharge.

Life insurance companies have paid
\$110,000,000 on account of influenza.
Heed the warning and get a low cost
policy from Chilcote & Smith. 1-f

Royal Tailored Clothes—
Kuppenheimer Clothes—
Ed. V. Price Clothes, at
20-21 K. K. K. STORE.

See Charles S. Hood, Klamath
Agency for health and accident in-
surance. 12-tr

Henline PHOTOGRAPHS

ARNOLD'S Chili Con Carne and Tamales NOW OPEN 211 E. 6th. Solicit Home Trade

FISH and OYSTERS



Fresh Columbia River Smelts
Four Pounds for 25c

Halibut Steaks 35c
Salmon Cuts 30c

PALACE MARKET

Klamath Packing Co.

PHONE 68
524 Main Street

ADLER-I-KA HELPS SON!

"My son had inflammation of
bowels and was greatly bloated (with
gas). After giving Adler-I-ka he is
completely CURED. Doctors did no
good." (Signed) M. Gerbard, Ferdin-
and, Ind.
One dose Adler-I-ka relieves sour
stomach, gas and constipation IN-
STANTLY. Removes ALL foul mat-
ter which poisons system. Often
CURES constipation. Prevents ap-
pendicitis. We have sold Adler-I-ka
many years. It is a mixture of buck-
thorn, cascara, glycerine and nine
other simple drugs. Whitman Drug
Company.—Adv.

RAY CITY WOMAN ENJOYS SLEEPING SICKNESS ATTACK.

SAN FRANCISCO, March 19.—
Tired mothers, if you want relief
from your family cares try to con-
tract the "sleeping sickness."
Mrs. Henry Mayer of this city, who
has just awakened from a 10 day
sleep, says that although the experi-
ence has left her a little weak, she
thoroly enjoyed it.
"It looks like a good thing for
tired mothers," she stated on being
completely awakened. "You have no
worryes, you forget your troubles,
you have no dreams and you get a
good long rest."

The only thing that annoyed Mrs.
Mayer, she said, was when she was
occasionally awakened for nourish-
ment. She shows no ill effects from
the sleep and when once awakened
her mind was fully active.
See Charles S. Hood, Klamath
Agency, for Indian grazing lands and
other. 12-1f

Netleton Shoes—
20-21 K. K. K. STORE.

Bargains In Cars

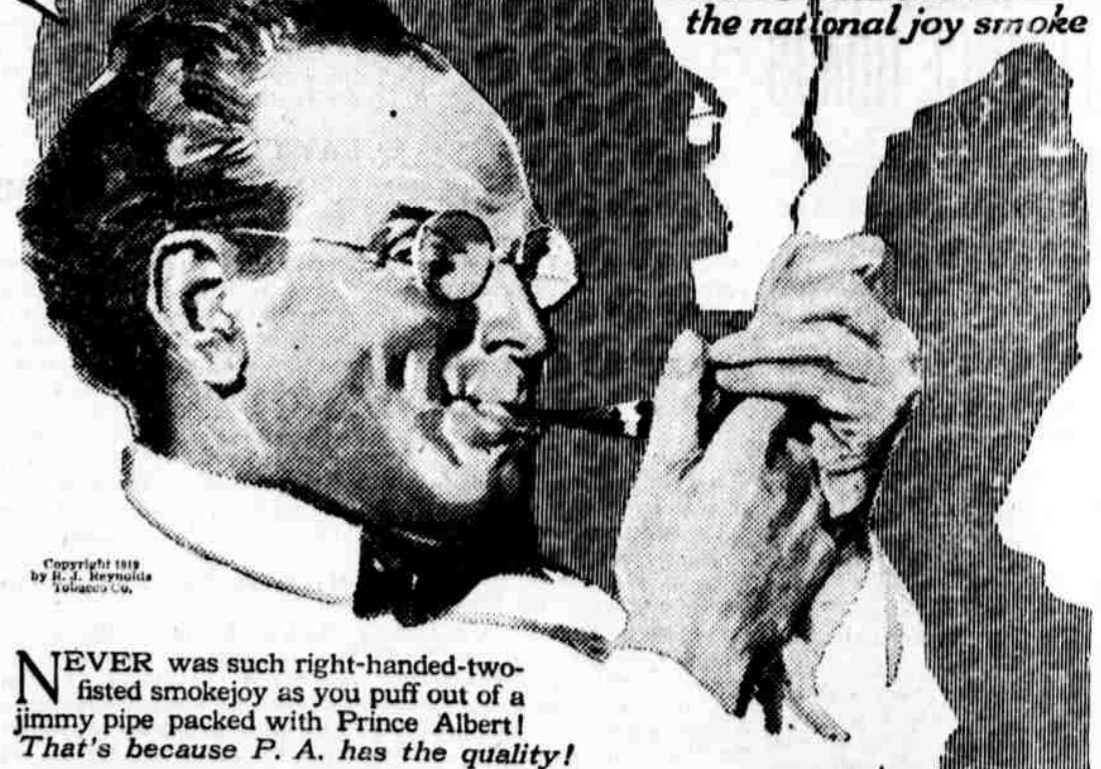
DORT TOURING CAR
Sells for \$1,095 in Klamath Falls
CARLOAD OF REO'S ON THE ROAD
Will arrive in about a week
ALSO HANDLE
BETHLEHEM AND DUPLEX TRUCKS AND
PARRETT TRACTORS
C. L. McWilliams
610 Klamath Avenue

High Grade Ladies' & Men's Clothes

MADE TO ORDER
FINEST MATERIALS
BEST OF WORKMANSHIP
LATEST STYLES
PERFECT FIT GUARANTEED
Prices are very reasonable
Your inspection invited
Chas. J. Cizek
MERCHANT TAILOR
514 Main St.

PRINCE ALBERT

the national joy smoke



NEVER was such right-handed-two-
fisted smokejoy as you puff out of a
jimmy pipe packed with Prince Albert!
That's because P. A. has the quality!

You can't fool your taste apparatus any more than you
can get five aces out of a family deck! So, when you hit
Prince Albert, coming and going, and get up half an hour
earlier just to start stoking your pipe or rolling cigarettes,
you know you've got the big prize on the end of your line!

Prince Albert's quality alone puts it in a class of its own,
but when you figure that P. A. is made by our exclusive
patented process that cuts out bite and parch—well—you
feel like getting a flock of dictionaries to find enough words
to express your happy days sentiments!

Topsy red bags, tidy red tins, handsome pound and half-pound tin
humidors—and that classy, practical pound crystal glass humidor with
sponge moistener top that keeps the tobacco in such perfect condition.
R. J. Reynolds Tobacco Company, Winston-Salem, N. C.



ALFALFA SEED

GARDEN SEED—Bulk and Package
Oregon Standard—Purity and Germination

Murphey's Feed & Seed Store
126 South Sixth St. Phone 87