



**Don't Be Without Good Woolen Wear--**  
**And Warm Foot Wear--** this kind of weather-- we still have a fine assortment of Patrick Mackinaws and woolen wear to show you Topnotch and Gold Seal Rubbers-Felts-Pacs- they cost no more than the ordinary kinds and are guaranteed to give wear and satisfaction.

Kuppenheimer clothes--Knox Hats--Nettleton Shoes--Dutchess Trousers.

Klamath Falls  
Oregon

**K. K. K. STORE**



Leading Clothiers  
and Hatters

**Community Minus Sugar  
More Than Two Years**

ARCHANGEL. (Correspondence of the Associated Press).—A trawler loaded with American food has just poked its way thru the dangerous, reef-dotted waters of the White Sea along the shores of the Kola peninsula and brought relief to the inhabitants who were, in many instances, actually starving. In one village the residents had had no sugar for two years.

The trawler, in charge of Captain D. O. Lively, of San Francisco, an officer in the American Red Cross, returned to Archangel yesterday,

and we saw among them many beautiful women.

"The ice is already filling the rivers and the Arctic winter will be on quickly. We have left them enough food to last them thruout the winter. At Tetranl there had been no ship in two years. They had eaten the last food of any sort except fish two weeks before our supplies reached them. Some of the men were too weak to carry a small sack of barley.

"The entire coast line has been swept by Influenza, which has taken terrible toll because they were absolutely without medicine. At ponol, where our ship had to leave quickly to escape the ice, thirty persons died in a week out of a total population of three hundred. They also have had much scurvy.

All along the coast we were hailed as 'Saviors of Russia.' The people here think just that—that America will save Russia from all its troubles."

**Local Red Cross  
Activities**

Those present at the sewing room, Thursday, Jan. 9, were Mesdames—D. M. Smith, O. D. Burke, L. E. Sullivan, Miss Gladys Pitcher.

Friday, Jan. 10, Mesdames—Geo. Humphrey, S. T. Sumner, D. M. Smith, O. D. Burke, M. S. Sargent, E. T. Higginson, G. E. Mitchell, L. E. Sullivan, Miss Gladys Pitcher.

Saturday, Jan. 11 Mesdames—Austin Hayden, Claude Davis, O. D. Burke, L. E. Sullivan.

**NOTICE**

The members of the Woman's Christian Temperance Union will hold their regular meeting Tuesday, Jan. 14th at 2:30 p. m., at the home of Mrs. E. J. Boyd, 331 Tenth Street. Members are urged to be present. All are cordially invited.

**REPLY MADE TO  
CORPORATION**

(Continued from page 1)

tion for the privileges and benefits they seek to acquire. The lands at present under irrigation on the Klamath Project require about 1200 second feet of water during the irrigation season. The California Oregon Power Co., expect to use 1,100 second feet of water derived from the Klamath project reservoir. The waterusers pay \$1.25 for operation and maintenance per acre per year in addition to the yearly construction charge installments. The 1,100 second feet delivered at the turbines at Copco, represent 11,000 electrical horsepower. Therefore who is receiving the greatest benefit?

The proposal to construct 25 miles of dike, thereby reclaiming 90,000 acres of land upon the shore of the Upper Lake is pure propaganda. It would require many such dikes to protect the great tracts of swamp land that would be affected by raising the water level 5 feet above normal as proposed. In addition to this who is to strengthen the dikes and protect the lands from seepage, that have been reclaimed by private enterprise?

Reference is made that the arrangements with the government, permitting the construction of the dam at the head of Link River, has made it possible to irrigate thousands of acres of land above the present canals, by virtue of a very low rate for power. Is it not possible that the present Irrigation District Law which made the organization of these units feasible would have provided means of furnishing power? And is the power furnished at a low rate? Under the arrangement mentioned the Power Company enjoys the use of reservoirs and power canals which cost several hundred thousand dollars and for which these same lands that would receive these rates for power, must help to pay.

It may be well at this time to consider the enabling paragraphs of the contract between the United States and the California Oregon Power Co. Omitting the preamble in part referring to the Reclamation Act of 1902.

**LEAVE FOR ASHLAND**

Mrs. I. D. Applegate, her sister, Mrs. Charles Putman, and Mrs. C. E. Fell, who have been here since the burial of Captain Applegate, left this morning for their homes in Ashland. They were accompanied by W. O. Smith.

**ANNOUNCEMENT**

The regular meeting of the Eastern Star will be held tomorrow evening. The new officers for the coming year will be installed, and refreshments served. Visitors are cordially invited.

**ANNOUNCEMENT**

Owing to the high cost of the film, "Crashing Thru to Berlin," which is coming to the Liberty theater tomorrow and Wednesday night, the management has been obliged raise the prices to 15c and 35c for the matinee in the afternoon, and 25c and 50c for the evening. This announcement is made so that the public will not be confused with the usual prices.

**TOO LATE TO CLASSIFY**

WANTED—By colored woman, cooking or work as maid in private family or boarding house. Phone 318. 13-31\*

Whereas, the United States pursuant to the said acts is now engaged in the reclamation and irrigation of lands lying in the state of Oregon and in the State of California, in the vicinity of Klamath Falls, Oregon, known as the Klamath Project and whereas, an act of the Legislature of the State of Oregon approved Jan. 29, 1905 (Chap. 5 General Laws of Oregon 1905, P. 65) authorized and empowered the United States to lower the water level of Upper Klamath Lake, Klamath County, Oregon, and to use any part or all of the bed of said lake for the storage of water, in connection with the operation of irrigation and reclamation conducted by the Reclamation Service of the United States, and,

Whereas the company has offered to construct a dam at or near the outlet of the lake for the purpose of regulating the level of the lake in such manner as may be deemed advisable by the United States for purposes authorized by the laws of the United States and of the State of Oregon.

When the State of Oregon granted this lake to the United States it was evidently considered that the United States contemplated lowering the level with the object of reclaiming lands of the project. It would be difficult to construe the act so as to permit a public service corporation to use the lake as a power reservoir.

especially upon the basis named. It is neither necessary or desirable to raise the level of the lake in order to reclaim the marsh land surrounding it. There is no justification whatever for the contract made by the United States with the company. The California-Oregon Power company should compete on an even footing with any other legitimate company for the furnishing of power to government reclamation units. They or any other company should pay for the water received from the reservoir of the Klamath project upon the same basis that the irrigation farmer pays for water to irrigate his crop.

The present arrangement permits the power company the right to use as much or more water than is used to irrigate the entire first, second and third units of the Klamath project.

The following is the present and probable future lands of the project that are and will be directly affected by the control of the water in the Upper Lake: An estimated 150,000 acres of marsh land surrounding the lake; 46,800 acres under the present gravity canals of the first, second and third units; 20,000 acres future reclamation in Tule Lake; 33,500 acres from pumping systems receiving water from present canals; 64,000 acres lower marsh lands. A total of 314,350 acres.

R. E. BRADBURY



**Reorganization Sale**

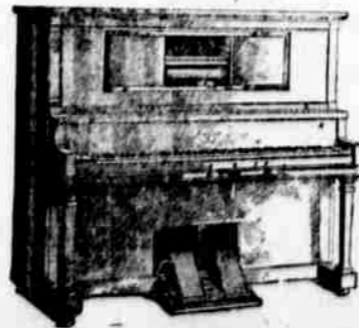
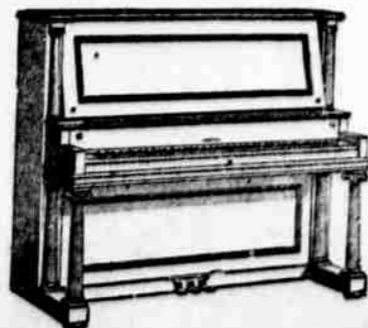
Having bought out the interests of C. F. Shepherd of Ashland, Ore., I am reducing my stock of pianos to secure cash.

I will place these instruments on sale beginning January 18th, and will continue bona fide reductions for fourteen days only.

This is an unusual opportunity for anyone considering the purchase of a piano in the next three years, as our firm has always opposed having sales, believing it a fairer plan to price all pianos as low as possible, but my urgent need of cash makes this sale advisable.

**Shepherd Piano Depot**

EARL SHEPHERD CO.,  
Next Door to Postoffice.  
KLAMATH FALLS, OREGON



**January  
Clearance Sale**

Your attention is directed to the remarkable offerings made in our Shoe Department.

Most every woman knows the merit of Queen Quality Shoes. They know that at regular prices Queen Quality is the logical shoe to buy. Why even consider any other shoe?

**QUEEN QUALITY SHOES**

\$ 4.00 Queen Quality Shoes	\$3.15
\$5 50 Queen Quality Shoes	\$4.45
\$ 6.50 Queen Quality Shoes	\$5.15
\$ 7.50 Queen Quality Shoes	\$5.85
\$ 9.00 Queen Quality Shoes	\$7.85
\$10.00 Queen Quality Shoes	\$8.35
\$12.50 Queen Quality Shoes	\$9.85

Special reduced prices on Men's, Boys' and Children's Shoes.

Clearance Sale Prices on Hosiery, Corsets, Underwear, Coats, Suits, and many other wanted lines of merchandise.

500 yards Dress Ginghams, at	27c per yd.
1,000 yards White Outing Flannel	24c per yd.
500 yards Wool Serges	90c per yd.

**J. F. Maguire Co.**