

The Evening Herald

W. O. SMITH, Editor

Published daily except Sunday by The Herald Publishing Company of Klamath Falls, at 115 Fourth street.

Entered at the postoffice at Klamath Falls, Oregon, for transmission through the mails as second-class matter.

Subscription terms by mail to any address in the United States:
One year \$5.00
One month .50

SATURDAY, OCTOBER 13, 1917

Herald's Classified Advs.

FOR SALE

FOR SALE—Fine new player-piano; no reasonable offer refused. Call at 1020 Main street. 12-21*

FOR SALE—Good milch cow; also nice library table. Call 224 Michigan avenue. 11-31*

FOR SALE—2,540 acres, the old Langell ranch in Langell Valley; 10 per cent cash, balance long time at low interest. Owner, 420 Palm st., San Diego, Calif. 9-6t

FOR SALE—Only hardware store in Southern Oregon town of 600; will sell at invoice, which is about \$7,000, or will trade for timber near Klamath which will make good sawmill proposition. Box 7, Glendale, Ore. 12-31*

FOR SALE—A modern 6-room house, good location, near high and grade school; furnished or unfurnished; a real bargain if taken soon; easy terms. See owner, 38 California, near Conger avenue. Phone 315-M. 13-3t

FOR SALE—WIRELESS SET—Receiving and sending set; can hear Panama, Alaska, Hawaii Islands, ships on the Pacific, all stations within 2,000 miles; can send 400 miles; self teaching Ominigraph, with continental code. This machine was chosen by the United States government to examine all applicants for radio license. A separate practice set with best instruments obtainable. This complete set, up to date, cost \$350. Will sacrifice; owner entering United States radio service. Call between 8 and 9 a. m. or p. m. 227 Michigan avenue. 12-3t*

HELP-WANTED

TELEPHONE OPERATORS—Permanent positions for young women; salary paid while learning. Apply Pacific Tel. & Tel. Co., 122 South Seventh, bet. 8 a. m. and 5 p. m. 5-1f

A HIGH SCHOOL GIRL may have a good home in exchange for service. Phone 270Y. 12-2t

FOR RENT

FOR RENT—Desk room in finest equipped ground floor office in Klamath Falls. J. T. Ward Co., 13-2t

FOR RENT—Apartment of three rooms, piano included; no children. Miller Photo Co., 1311 1/2 Main street. Phone 322M. 11-1f

LOST AND FOUND

LOST—On Sixth street, crank off of Chalmers car. Finder leave at Dunham's garage. 13-1t*

LOST—In city, October 2d, bob-tail Scotch Collie dog; answers name of Bob. Leave at Klamath stables or notify D. D. Liskey, \$5 reward. 12-3*

MISCELLANEOUS

WANTED—Geldings, 5-year-old and up; must stand 15' hands high. Phone or call W. C. Hobach, O. K. stable, Klamath Falls. 12-2t

WANTED—Winter keep for eight horses. Write Steve Sabo, city, stating terms. 8-6t*



Klamath Lodge No. 137, I. O. O. F. meets Friday night. R. A. Emmitt, N. G., Nat. Otterbein, Secretary. Ewauna Encampment No. 46, I. O. O. F., meets Tuesday night, R. A. Emmitt, C. P., L. J. Bean, Secy.



Money to loan on city and country property. See Chilcote. 6

A policy with the Chilcote Agency always stands for safe insurance. 6

Oregon Cassimer Suits—New patterns with two pairs pants, \$20. At K. K. K. Store exclusively. 20-1f

BRITISH SMASHON THRU HEAVY RAIN

DRIVE CONTINUED NORTHEAST YPRES ON SIX MILE FRONT. BIG GAIN REPORTED—MANY PRISONERS TAKEN

LONDON, Oct. 13.—In spite of a heavy rain which is failing to hinder their progress, the British troops have launched another heavy attack against the Germans in Flanders, northeast of Ypres, on a six mile front. Satisfactory headway is reported as being made.

BRITISH HEADQUARTERS, Oct. 13.—The troops have pushed forward to an average depth of 800 yards on a wide front. Many prisoners are now coming in.

The prudent man carries life, fire, accident and health insurance. Get a standard policy from Chilcote. 6

SHIPPINGTON DANCE Regular Saturday night dance at Pool Hall tonight. 13-1t*

Oregon Cassimer Suits—New patterns with two pairs pants, \$20. At K. K. K. Store exclusively. 20-1f

COMB SAGE TEA INTO GRAY HAIR

DARKENS BEAUTIFULLY AND RESTORES ITS NATURAL COLOR AND LUSTRE AT ONCE

Common garden sage brewed into a heavy tea, with sulphur and alcohol added, will turn gray, streaked and faded hair beautifully dark and luxuriant. Mixing the Sage Tea and Sulphur recipe at home, though, is troublesome. An easier way is to get the ready to use preparation improved by the addition of other ingredients, costing about 50 cents a large bottle, at drug stores, known as "Wyeth's Sage and Sulphur Compound," thus avoiding a lot of fuss.

While gray, faded hair is not sinful, we all desire to retain our youthful appearance and attractiveness. By darkening your hair with Wyeth's Sage and Sulphur Compound, no one can tell, because it is done so naturally, so evenly. You just dampen a sponge or soft brush with it and draw this through your hair, taking one small strand at a time; by morning all gray hairs have disappeared. After another application or two your hair becomes dark, glossy, soft, and luxuriant, and you appear years younger. Wyeth's Sage and Sulphur Compound is a delightful toilet requisite. It is not intended for the cure, mitigation or prevention of disease.—Adv.

HOUSTON'S Metropolitan Amusements

HOUSTON OPERA HOUSE DARK

STAR THEATER

William Fox Presents

William Farnum

in a Photodrama

"AMERICAN METHODS"

Sunday and Monday

Triangle-Ince Presents

Louise Glann,

"The Peacock Woman," in

"LOVE OR JUSTICE"

TEMPLE THEATER

Palla's Pictures Corp. Presents

Vivian Martin in

"THE SPIRIT OF ROMANCE"

A Society Drama, in Five Parts

Sunday and Monday

Pathe Presents

Lina Cavalieri in

"THE SHADOWS OF HER PAST"

In Five Parts

HEARST PATHE NEWS

Latest War Pictures, Current Events

ADMISSION 10 CENTS

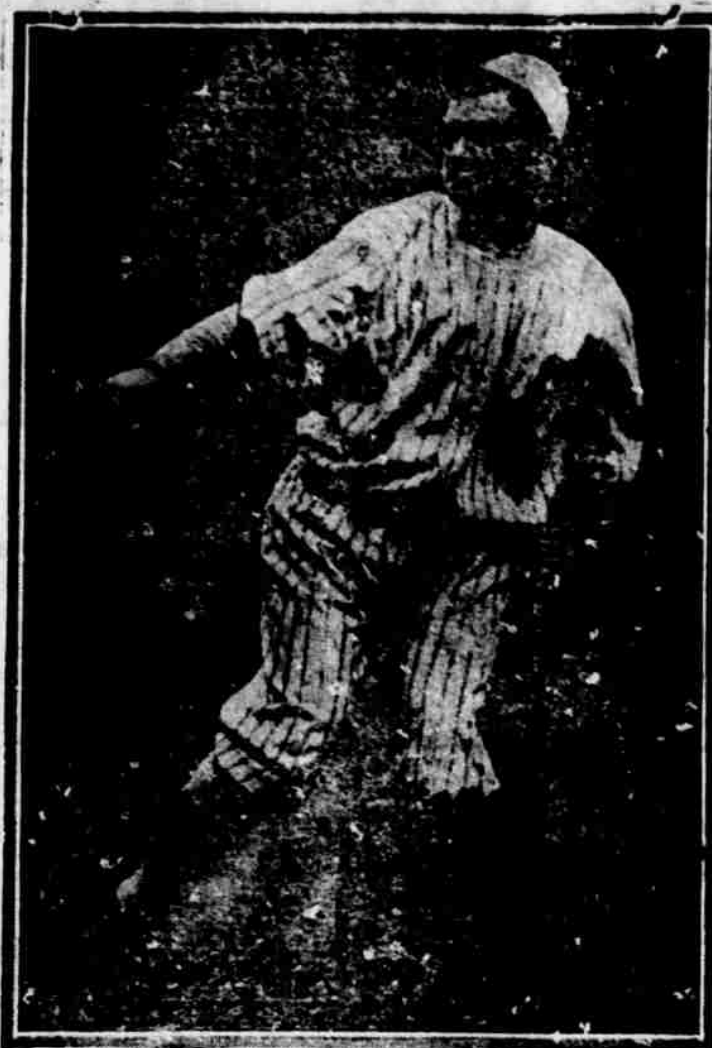
MERRILL OPERA HOUSE

MOTION PICTURES

TUESDAYS AND SATURDAYS

Merrill, Oregon

On Reserve Giant List



JEFF TESREAU

Germany's Strength Is Now On the Wane

WASHINGTON, D. C., Oct. 13.—Germany's military strength shows a clear decrease for the first time since the war began, according to a review based upon data of the French general staff made public here by the French high commission.

Worn down and driven back by the never-ending pounding of the allies on the western front, the statement says, the Germans have made their supreme military effort, after drawing heavily upon their inactive armies in the east, and calling out their 1918 and part of the 1919 reserves.

While the allies have reached and are prepared to maintain their full strength while awaiting the coming of America's great army, the enemy's resources are diminishing at the moment when the military situation demands that they increase. "This shows," concludes the statement, "the active character attending operations in 1918, when three great democracies, England, France and America, will unite in attacking the enemy, in conformity with the only sound principle of war."

The commission's statement issued through the committee on public information follows: "Both Franco-German fronts on the Aisne, 1917, and Verdun, 1916, have been compared, and it has been noted that they are

practically of the same length. It has been stated that German forces occupying them before the attack were equally comparable—twelve and fourteen divisions. It is known now that during the same period, May to September, the Germans engaged twenty-five fresh divisions at Verdun, and that they have been obliged to engage forty-five on the Aisne. Furthermore, during an equal period, the French took 5,863 prisoners at Verdun and 8,553 on the Aisne.

"This comparison included only a small sector of the French front. But it showed an increase of the material forces of the allies and the improved French fighting methods since adopted by the other armies, and also testified to by the German staff itself, apropos of the battle of the Somme, in explaining their defeat, 'to the perfect use of technical methods.'

"The comparison is extended to the entire Franco-English front. If you consider that from April 15 to June 15 the enemy engaged 108 divisions against the Anglo-French forces and that the successes of the British at Ypres obliged the enemy to engage fifteen divisions during the last ten days, you can understand why the German losses on the western front grow heavier. They admit the loss of 116,000 men during the month of

MILITARY DRILL MEETS PROTEST

SIX HUNDRED NEW YORK SCHOOL CHILDREN GO ON A STRIKE ON ACCOUNT OF ADDITIONAL TIME

NEW YORK, Oct. 13.—Six hundred high school students have struck because forty to eighty minutes have been added to the school day for military training.

Four thousand more threaten to follow unless the training is discontinued.

SAN FRANCISCO STRIKE THREATENS

SAN FRANCISCO, Oct. 13.—A general strike of approximately 5,000 union employes of the Pacific Telephone company for demands said to include a wage increase of a dollar a day is now imminent.

May; 140,000 men are estimated by the allied staff during the month of July.

"This is because the fighting on the western front practically never ceases. Whether such sectors of Verdun, of the Aisne, or in the British sectors of Arras and Ypres, the fighting is only discontinued at one point to be taken up at another. In addition to the big attacks a quantity of carefully prepared small actions, which have been crowned with success and of which the bulletins are now able to give a clear idea, increase the attrition of the Germans.

"This constant activity, coinciding with the weakness and inaction of the Russians, also explains why the Germans are obliged to maintain three times larger forces on the French front than in the Russian front. In the beginning of the summer there were fifteen German divisions to 700 kilometers on the French front, as against 130 Austro-German and Bulgarian divisions, 77 of which were Germans, on the eastern front. It is known that the Russian winter practically stops all active operations, and that the reaction of the internal events in Russia on the eastern front has allowed Germany to consider it during four months as a veritable reserve for the western front.

"It clearly appears at present that the German staff, remembering the critical situation in which they found themselves following the Anglo-French success in the Somme in 1916, fears to see their western front broken by the allied offensive in 1917."

At the Churches

The Christian Science Society of Klamath Falls, which is a branch organization of The Mother Church, The First Church of Christ Scientists, in Boston, Mass., holds services at 113 South Fourth street, every Sunday morning at 11 o'clock and every Wednesday evening at 8 o'clock. All are welcome.

Subject of the lesson for Sunday, October 14, "Are Sin, Disease and Death Real?"

The Sunday school session is from 9:45 to 10:45 every Sunday morning. Pupils are enrolled to the age of 20. The free reading room and free lending library is open from 2:30 to 4:30 on Tuesdays, Thursdays and Saturdays. The Bible and all authorized Christian Science literature may be read, borrowed or purchased.

At the Eleventh street Baptist church, Sunday, October 14th. Rev. W. H. Cox, pastor, residence 235 Tenth street.

Sunday school at 10 a. m., M. P. Perkins, superintendent.

Preaching by the pastor at 11 a. m. Subject, 11th Chapter, Book of Romans.

H. Y. P. U. at 6:30 p. m. Miss Akin leader.

Preaching service at 7:30 p. m. Subject lesson from First Century.

There will be special music and singing at each service and a welcome for you.

On Friday Miss Maude Scovil and Mr. Foster will give a musicale of exceptionally high order for the benefit of the church. Look out for program. You cannot afford to miss this, so plan ahead.

Evangelical Lutheran services will be held at Library hall at 3 p. m. Sunday school at 2 p. m.

Sermon, II. Cor. 5:21. "The Justification of man an Act of God." All Lutherans, whether they be of Scandinavian, English or German descent, are cordially invited to attend.

All others interested are welcome. Anybody knowing of Lutherans in or around Klamath Falls please notify the pastor, that he may call on them. Rev. M. C. Rossman, 127 First street.

The Little Brown Church, corner Ninth and Pine streets. W. E. Hanbo, minister. Residence 815 Ninth street. Telephone 324.

10 a. m., Bible school. Mrs. Clara Moore superintendent.

11 a. m., morning worship, communion service. Sermon subject, "Jesus' Letter to the Church at Ephesus."

8:30 p. m., Christian Endeavor meeting.

7:30 p. m., evening worship. Subject of address, "Progress of Civilization and the Liberty Loan."

Special music. Violin solo by Mrs. Satterlee.


Church of the Sacred Heart, corner High and Eighth streets. Rev. Hugh Marshall, pastor.

Children's mass at 8:30 a. m. High mass at 10:30 a. m. Holy Hour at 7:30 p. m.

The Episcopal prayer service will be held in Library hall Sunday morning at 11 o'clock. All who are interested are invited to these services.

Chilcote has the exclusive sale of several good houses. They are well located, and terms are easy.

Oregon Cassimer Suits, 200. Exclusively at K. K. K. Store. 20-1f



Right Now

The business of war in all of its grim reality is occupying the attention of our country. Its requirements are men, materials and money.

MANY ARE PLEDGING THEIR LIVES to our country's cause.


"Labor is supplying the energy necessary to produce the material equipment. You are not asked to give, merely to **LEND YOUR MONEY, AT INTEREST**, to the Government thru the purchase of Liberty Loan Bonds.

AS AN AMERICAN—CO-OPERATE.

We handle subscriptions.

First State & Savings Bank

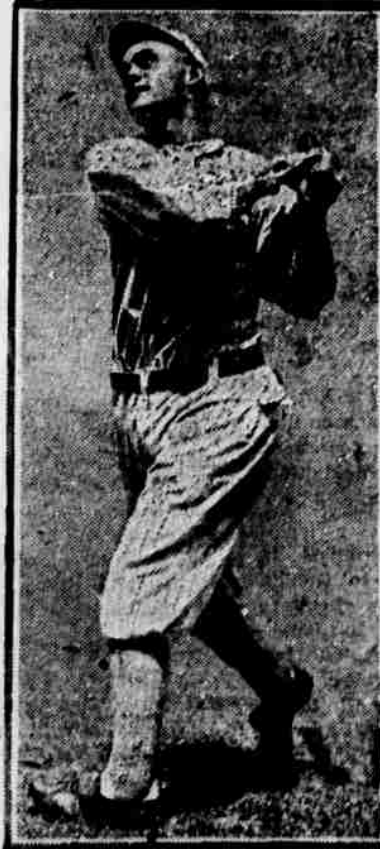
KLAMATH FALLS, OREGON



White Sox First Line of Defense in World Series, the Infield



EDDIE COLLINS



CHICK GANDAR



BUCK WEAVER



FRED McMULLIN