

# FEARFUL AIR RAID ON LONDON

## Russians Are Successful Along Eastern Front

### GERMAN PLANES ATTACK LONDON IN BIG RAID

LARGEST ATTACK EVER MADE TERRIFIES LONDON PEOPLE

A pack of twenty aeroplanes is met in a terrific air battle by British defenders. Heart of city is picked for the raid and where the damage is suffered. No deaths reported thus far.

LONDON, July 7—The greatest aerial attack ever attempted bombarded London today. The attack was met by a large number of British aeroplanes assisted by heavy artillery. The damage done was in the heart of the city where thousands of people crowded the city. The sound of exploding guns and bombs over the city was deafening. No casualties had been reported up to noon.

### MAN IS TIED TO SPY SUSPECTS

WHILE NOT ACCUSING GERMAN OFFICERS OF QUESTIONABLE ACTS, PRECAUTION IS TAKEN AT WASHINGTON

WASHINGTON, D. C., July 7—All Germans who have been formerly connected with the German Embassy or German Consulates in America have been requested to leave the country by the State Department. The Germans have not been told that they were suspected of being spies, but it is inferred that their loyalty to the Kaiser might make it difficult for them to remain here without attempting to send information of a military character to Germany. The men in question are mostly clerks and servants.

### HALF MILE SPUR IS BEING BUILT

TO FACILITATE CONVENIENCE IN UNLOADING MATERIALS, SHORT GRADE IS BEING CONSTRUCTED

Work on two miles of the new branch line will be in progress inside of a week according to the plans of contractor Guy Walton and if the right way matters can be straightened out satisfactorily a large force

### RATE REDUCTION AGAIN COMES UP

SAN FRANCISCO RATE ATTORNEY WILL BE HERE MONDAY NIGHT FOR TALK WITH SOME LOCAL MEN.

That there are new developments in the freight rate reduction matter between Klamath Falls and California points, which has been before the California Railway Commission and the Courts for a number of months, being instituted by members of the Klamath Commercial Club and Business Men's Association, is indicated in a letter just received from the San Francisco rate attorneys employed. The new phases of the situation are not made public but the fact that the president of the firm L. R. Bishop will be held at the Commercial Club Rooms and all the business men are especially urged to be present. The decisions made by the California Commission and the District Court have all been favorable to the reduction, which is so very material as to be of vast importance to all local shippers and receivers and the rebates to many here on shipments received since April will be substantial if the decision finally goes into effect.

### NAVAL RECRUITS LEAVE TOMORROW

TOTAL FROM KLAMATH NOW WELL OVER ONE HUNDRED. MORE TO GO WITHIN THE NEXT FEW DAYS

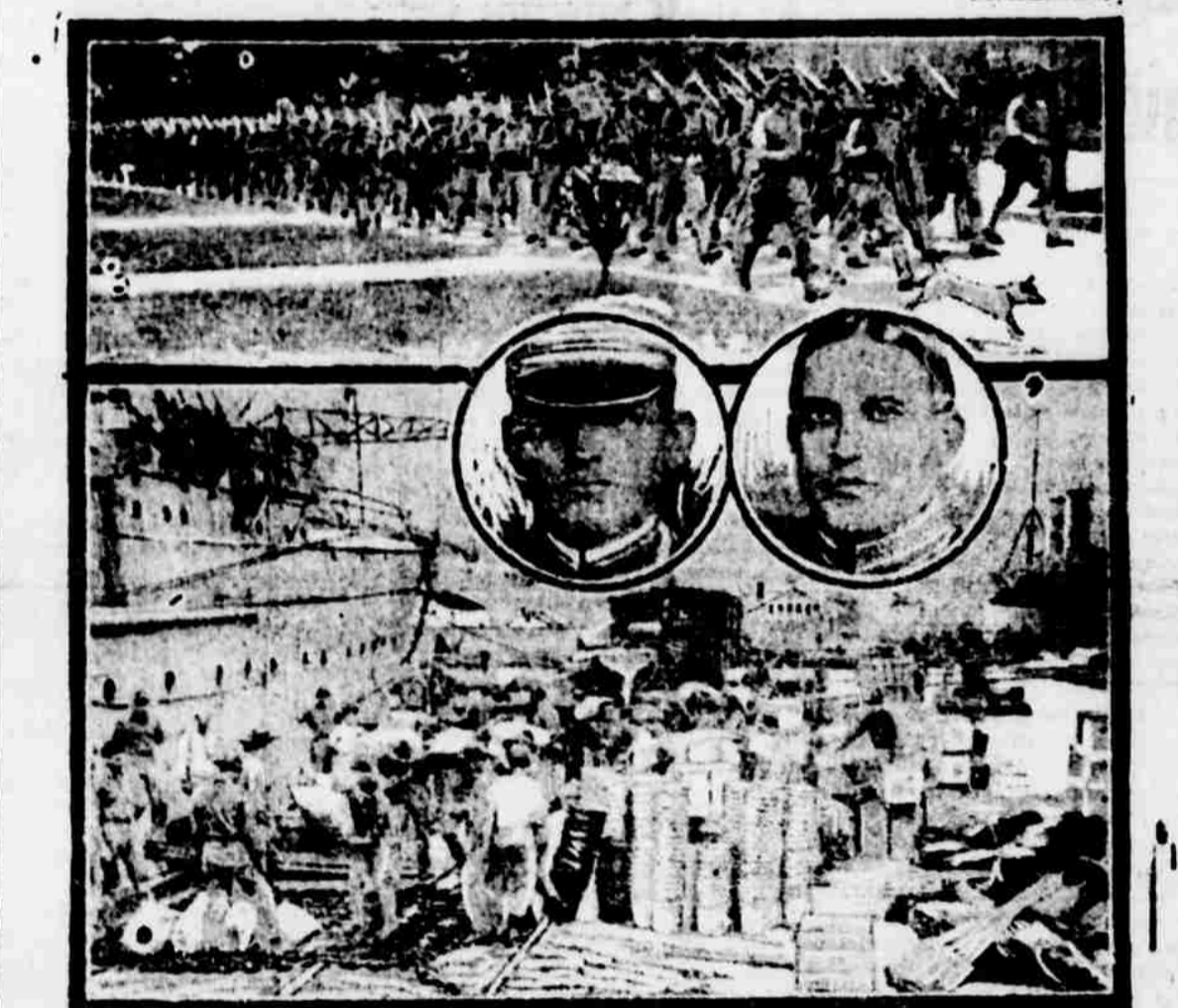
Four more Klamath County boys will leave to answer the call of the colors Sunday, according to Postmaster W. A. Dezell, who is acting as recruiting agent for this county. The list of the group thus far consists of Keith Ambrose, Arthur Tappan, Sam Combs and Thomas Thorson. All four will enlist for the navy. This brings Klamath's total recruits up to considerably over a hundred.

### CHELSEA PLANT STARTS WHEELS

NEW LOCAL FIRM STARTS OPERATIONS AT FAIR GROUNDS BELOW THE CITY ON LAKE KWAUNA.

Klamath Falls has added another year round payroll to its already substantial list. With the opening of

### Marines, the Soldiers-Sailors, Departing for France, and Their Commanding Officers



LIEUT. COL. LOGAN FELAND ~ COL. CHAS. A. DOYEN. The upper photograph shows United States marines, those soldiers of the sea and the land who are first in every war, marching on their way to the ship which took them to France. The lower scene shows the loading of their vessel with supplies. Colonel Charles A. Doyen will command the regiment at the front in France, and Lieutenant Colonel Logan Feland will be next in authority.

### First Farming Is Done by Many in Portland

PORTLAND, Ore., July 7—Hundreds of Portland residents this year will harvest their first crops of potatoes, onions, corn and other truck crops as a result of the recent "back yard garden" movement inaugurated to add to the nation's food supply. Many vegetables planted at the beginning of the "back yard campaign" are now climbing well above the soil

### CHELSEA PLANT STARTS WHEELS

the Chelsea Box Company at the south end of Lake Ewauna yesterday another industry which has already proven itself to be remarkably profitable here, in a number of instances was started.

While a full force of men will not be put on until next week the saw dust is flying and everything is being made ready for a busy season. About thirty men will be employed under the supervision of C. F. Setzer formerly of the Klamath Manufacturing Company.

### MANY TOURISTS VISIT KLAMATH

WARM WEATHER BRINGS HEAVY INFUX OF TOURISTS TO VISIT THE BEAUTIFUL SCENIC ATTRACTIONS OF COUNTY

Although Crater Lake Park is not open to the public and will not be for a number of days yet, there are a large number of tourists appearing daily, and there is every indication of a heavier year than ever before. The city auto park at the rear of the old Lakeside Inn is now crowded every night by tourist campers who apparently enjoy the privileges afforded them very much as many of them stay for several days at a time. A cook stove, benches and tables have been supplied also wood for cooking purposes. Many of the campers take advantage of the fishing on the wharf nearby and on up the river. Were it not for the old and unsanitary barns adjoining this park, it would be an ideal place in which to camp and it is to be hoped that in the future these features can be remedied. Our tourist visitors of the summer months are a most valuable revenue to the city. On leaving it they all advertise one way or the other and their pleasure should be carefully catered to while here.

### NARROW ESCAPE BY LOCAL BOYS

TRADE OFF MOTORCYCLE FOR AUTO RESULTS DISASTROUSLY FOR 4 KLAMATH FALLS BOYS

A narrow escape from a fatal tragedy occurred last night near the Klamath Hot Springs when an automobile driven by a Klamath Falls boy overturned on the grade, turned over three times and pinned two of the occupants to the ground. John Arnold, an eighteen year old boy whose parents live in the Mills Addition rode a motorcycle to the celebration at Ashland and while there he traded the machine for an automobile. He started to return yesterday with a young man named Leach and two others whose names were not learned. On the grade three miles beyond the Klamath Hot Springs, the steering gear gave way and control of the machine was lost. It turned off the steep grade at that point and that the entire party was not killed is almost a miracle. Arnold and Leach were pinned under the car for more than half an hour. Dr. R. R. Hamilton was called and the party was removed to the Hot Springs where their injuries were cared for. Arnold was badly cut around the eye and Leach sustained painful injuries on the head while the injuries of the other two were of a minor nature. They expect to come on to Klamath Falls this afternoon.

Miss Beesie Applegate has returned from Pasadena, where she taught English in the high school. She will occupy the same position next year.

### RUSS FORCES ATTACK PINSK

RUSSIAN FORCES SHOW FAITH TO ALLIES BY TERRIFIC BOMBARDMENT ALONG EASTERN FRONT

PETROGRAD, July 7—Renewed fervor among the Russian Military forces is seen in the reports received today from the Eastern Front in the district of Pinsk, which is made the object of a violent attack. All obstacles are being leveled by the heavy fire of the Russian artillery. Pinsk is said to be burning according to semi-official news agency reports. This activity marks the second effort of the Russians after a long period of quiet following the revolution. Pinsk is in the swampy White Russia about the middle of the Russo Galician battle line.

Russians have captured the fortified forest of Slanka with all the enemy's positions and have penetrated to the village of Godov in Galicia a hundred and fifty miles from Pinsk. The eleventh army has captured several first line trenches.

Pinsk has been in the possession of the Germans since the invasion of 1915 in which the Russians were swept far back.

Mr. and Mrs. H. G. Wilson, son Hilbert and daughter Ella May left Thursday morning for their home in Roseburg. They have been visiting Mrs. Luke Walker, who is a guest of the week end at Beechside, the home of Mr. and Mrs. Wilson.

### COST OF FIGHT IS TREMENDOUS ONE

UNPRECEDENTED RISE IN THE PRICE OF FOOD AND EQUIPMENT IS ALMOST BEYOND BELIEF

WASHINGTON, July 5—An idea of the enormous cost of maintaining America's fighting forces is given in a statement issued by the committee on public information today, showing the relative amounts expended in 1915 when the country was at peace and to be expended this year.

Subsistence which, for instance, in 1915 was supplied at the modest cost of \$9,800,000, this year has been provided for in the appropriation estimates at \$133,000,000.

\$700,000, this year will cost more than \$106,000,000. Manufacture of arms, which in 1915 cost \$450,000, this year will cost more than \$55,000,000. Ammunition \$145,000,000. Ammunition for small arms, which in 1915 was had for \$875,000, this year will cost \$145,000,000. Transportation, which in 1915 was furnished at \$12,000,000, this year will cost \$223,000,000. Regular supplies, which in 1915 cost \$10,000,000, this year will cost \$110,000,000. For aeronautics \$450,000 was appropriated in 1915, while \$47,000,000 already has been appropriated for this year. This does not include of course, the administration's big aircraft program, which calls for an initial appropriation of \$250,000,000. Among the add items already purchased are: Five million blankets, 27,000,000 yards of bobbinette, 2,000,000 pairs of socks, 45,500,000 yards of cotton cloth, 21,300,000 yards of rubber, 6,000,000 pairs of shoes, 191,000 pairs of light canvas shoes.