

WILSON NEEDS CALIF. OR MINN. TO WIN MUST HAVE 10 MORE VOTES TO BE ELECTED; HAS 256

BUSINESS MEN ARE HOSTS TO FARMERS

ENJOY BIG DINNER AT MOOSE HALL AT NOON

Business Men With White Aprons Wait Tables for Visiting Farmers. Hold Parade With Band on Main Street Just Before Dinner—Farmers Will Get Free Tickets to All Theaters.

With the merchants themselves serving as waiters, farmers from all sections of Klamath county were entertained at noon today in the Moose hall by the Klamath Falls Business Men's Association. A sumptuous dinner was served by the business men without cost to the farmers, and speeches made by Robert E. Strahorn and others.

Besides Mr. Strahorn, County Commissioner-elect Burrell Short, County Agriculturist Glaisyer, Rev. George H. Bennett and Charles W. Eberlein addressed the visitors. W. A. Detsell was toastmaster. This is Community Day, and is the day when the business men are hosts to their patrons outside Klamath Falls. The members of the association staged a parade just before noon and behind the band marched down Main street. Each wore a white apron and kept it on while they served the farmers at dinner.

The interest of the farmers in Community Day was clearly shown by the large number of them who came to town to be guests of the business men. They filled the Moose hall and listened attentively to the speeches made. Tonight free tickets to all theaters in Klamath Falls will be given to the visiting farmers and their families. Many products raised by the farmers were on exhibition at the Moose hall, and prizes on these will be awarded. The prizes will be redeemable at any Klamath Falls store.

Women Are Working
United Press Service
LONDON, Nov. 9.—More than 870,000 women have been drafted into various trades and occupations since the outbreak of the war.

Women Will Hold Big Meeting on Bond Issue

Not since the women of Klamath became possessed of the franchise have they had such an opportunity to use united action in a political way as they will have when the \$300,000 Strahorn railroad bond issue is voted on next Tuesday. The women of the city declare that the railroad bond issue demands intelligent investigation and action by the entire body of women voters of the city prior to election day, November 14th. They therefore have arranged a mass meeting of women to be held at Houston's opera house on Saturday afternoon, November 11th, at 8 o'clock. The women of the city are very

STRAHORN TELLS FARMERS ABOUT RAILROAD PLANS

ASKS UNANIMOUS SUPPORT OF HIS ENTERPRISE

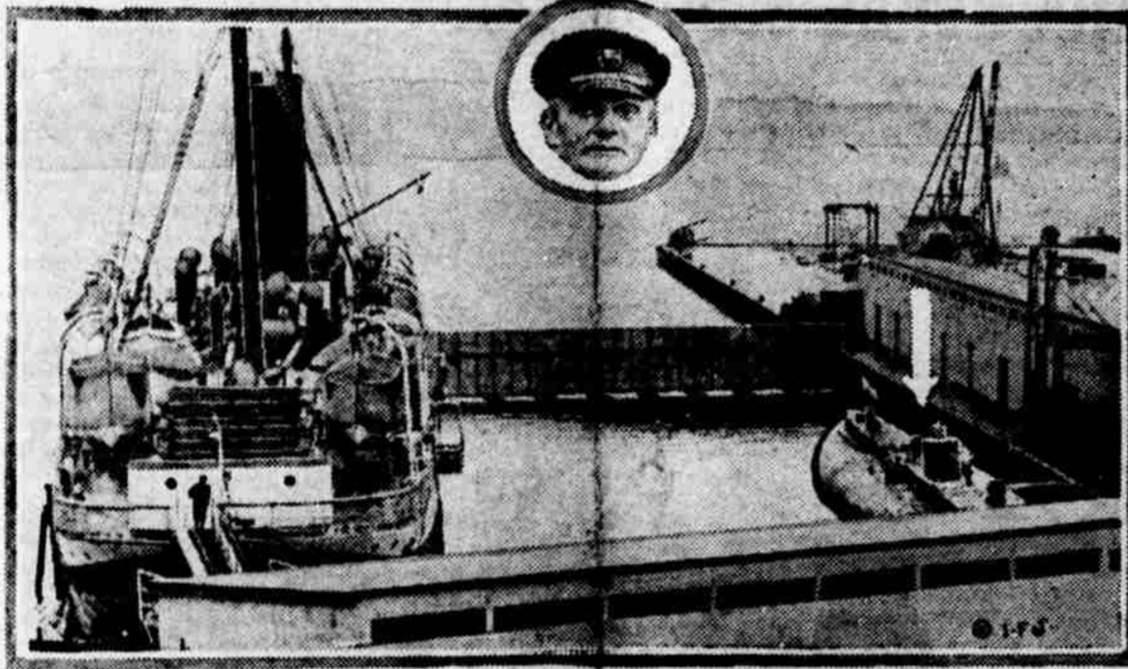
Railroad Builder Reviews Many Advantages to All Classes of Better Railway Connections With Portland—Points Out That He Comes to Klamath on Request of Local People and Portland.

Some of the points brought out in Mr. Strahorn's talk at the dinner given by the Klamath Falls Business Men's Association to the visiting farmers and others of the Klamath county today were eloquent arguments in favor of unanimous support for his Oregon, California & Eastern railway-project. To begin with he outlined the advantages of distance saved, quick service, the great developing effect of such construction, and the better living to be enjoyed by many now isolated through convenient access to the city and through their closer intercourse and association with each other.

For examples, the Klamath country would be brought over 100 miles nearer to Portland over a line with easy grades. This would mean four or five hours quicker time for passengers and at least a day or a night quicker delivery of freight and express. The great interior would be so developed and all kinds of traffic so vastly increased that the Southern Pacific would not miss the business taken by the new line, but would have more than ever before. The car shortage so frequently prevalent would be largely eliminated, because the new line with the help of its three or four connections would afford a supply which would be more

earnest and determined to use their influence in the election. This meeting promises to be the most interesting and important local political event in this most exciting month. The services of the band have been secured. A rattling good program of women speakers has been arranged. Mr. Robert E. Strahorn has consented to address the meeting. Mr. Strahorn has his fair warning that the ladies propose to execute their prerogative and ask questions. This will be the first event of the kind ever held in the city, and every woman is invited and urged to be present.

Deutschland Protected as if Made of Gold



CAPT. PAUL KOENIG

The Germans have fenced in the merchant submarine Deutschland, which arrived at New London, Conn., Nov. 1 from Bremen after another remarkable voyage, as if she were made of gold. The narrow points to all there is of the submarine visible

nearly adequate even in times like the present, when untold injury is being suffered by the county through cancellation of orders and loss of business which the farming community, as well as local industries had spent years in building up. Mr. Strahorn said he had taken hold of the railroad situation at Klamath Falls only after months of urgent solicitation upon the part of the Klamath Commercial Club and the Portland Chamber of Commerce, and only after both the Hill and Harriman interests had officially disclaimed any intention of bettering railway facilities for years, if ever. After looking over the situation carefully for a year, and spending a small fortune on engineering, he responded to the Klamath Falls request for a statement as to conditions, upon which he would immediately build the road, commencing first at Klamath Falls and working northward to Bend, instead of commencing at the north end, as originally arranged, this latter course involving a delay of some two years before the Klamath country could realize any direct benefits. He was, therefore, not here in the attitude of an ordinary promoter, pushing a project upon the community, hoping to rake off a lot of easy money, but was simply stating terms in answer to a definite request, upon which he would take up the work if the community wanted him to do it. If the \$300,000 is voted and the rights of way, terminals and other requisites are forthcoming, construction will proceed immediately, he said. This will not be limited merely to a line to Sprague River, as has been stated, but pushed right along, as rapidly as the other financing, which is well advanced, is completed. This will include the line through to Bend and from Silver Lake to Lakeview, with a connection across to Harney Valley and ultimately from here to Lakeview.

Class to Meet.
The study class in "Training for Soul Winning" will meet tonight at the Christian church. Prayer meeting also will be held tonight.

Courtdays in Town.
Mr. and Mrs. Frank Courtide of Odessa are spending a few days in Klamath Falls on business and pleasure.

to the public. On one side is the state pier heavily guarded, and at the back a shed, which is guarded. Outside the German steamship Willehad, which had been interned in Boston harbor, protects her and a high board

Early Bulletins

NEW YORK, 10 a. m., Nov. 9.—With Wilson leading in California, Hughes is 510 ahead in Minnesota, and is leading in New Mexico. Both sides claim New Hampshire by a few votes. North Dakota again has stopped to Wilson, giving him 256 votes to Hughes 243. Thirty-two yet are doubtful.

It is learned that federal investigators will be sent to Minnesota secretly to investigate the election methods there. This morning the democrats say they are absolutely certain of California, North Dakota and New Mexico and probably Minnesota. Hughes is leading in West Virginia by 3,200. Twenty-one hundred Minnesota militiamen's votes will not arrive until next Tuesday and may delay the final result.

The republicans claim New Mexico by a small majority, but the democrat will not concede the state. Both sides are hinting at investigations in several states.

United Press Service
SAN FRANCISCO, Nov. 9.—5,692 precincts in California give Wilson 456,329 votes and Hughes 451,274. Chester Rowell, republican state chairman, at noon today called the state for Hughes by a narrow margin. He says the closeness may split the vote as it was four years ago, and if so, Hughes is elected.

PHILADELPHIA, Nov. 9.—The Philadelphia American, a strong republican newspaper, concedes Wilson's election.

CARRIER TO ODESSA WANTED FOR WINTER

Here's a winter job for somebody. All the fellow who gets the job has to do is go to Odessa and return two or three times a week.

The postoffice department wants to give Odessa mail service this winter after the upper lake freezes over and boats can't carry the mail any longer. The department wants bids for carrying the mail twice a week and for carrying it three times a week. Persons interested may apply to Postmaster W. A. Detsell.

LATEST

United Press Service.
NEW YORK, Nov. 9.—The republicans claim California by 500 votes. The democrats now claim West Virginia by 1,500. The republicans concede New Hampshire to Wilson. Hughes is 800 ahead in Minnesota. Hughes' lead in Oregon is growing.

SAN FRANCISCO, Nov. 9.—5,705 precincts give Hughes 454,210, Wilson 458,769.

NEW YORK, Nov. 9.—The indications are that Wilson is re-elected, as California and Minnesota are swinging Wilsonward, and either is sufficient to elect Wilson. Hughes must get both to win. Hughes is leading in New Hampshire by 146, in New Mexico by 258, and in West Virginia by 4,100.

7 MORE STATES IN DRY COLUMN

CHICAGO, Nov. 9.—The drys claim that prohibition has carried in Nebraska, Michigan, South Dakota, Montana, Florida, Utah, Alaska and Missouri. California remains wet. Measures in Colorado and Arkansas proposing sale of liquor, were defeated.

DICK POSEY TO ENTERTAIN HERE

In "Just Common Folks," Dick Posey of Ashland will entertain tomorrow evening at the Methodist church. Dick Posey believes in laughter rather than tears, and his characters wear chin whiskers and sunbonnets, they eat with their knives and drink coffee from their saucers, they raise blooded stock and statesmen.

Posey appeared in Klamath Falls a few years ago and greatly pleased the crowd which filled the Methodist church. His entertainment tomorrow evening will begin at 8 o'clock.

LEADS CALIFORNIA; LOSING MINNESOTA

MRS. MELHASE CONTESTS DEAD HUSBAND'S WILL

FILES SUIT IN COUNTY COURT TODAY, CHARGING FRAUD

Alleges in Complaint, Prepared by Ferguson and Drake, That Beneficiaries of Will Placed in Court Suppressed Real Will of Deceased, Much to the Damage of Plaintiff, Who is Widow of Deceased.

Charging that Fred Melhase never signed in the presence of witnesses the will filed for probate, that he never said it was his last will and testament, that it never was his last will, and the beneficiaries named in it have suppressed the true will, to the damage of the plaintiff, Mrs. Henrietta Melhase today filed suit, contesting the will of the late Fred Melhase, her husband.

Melhase died December 15, 1915. On December 16th Gus Melhase filed in the county court a will which was presumed to be the will of Fred Melhase, his brother. The beneficiaries named are Gus Melhase, A. Melhase, Richard Melhase, Emma Ketsdever, Clara Funk and Bertha Lehenbower, and all are made defendants in the complaint filed today.

The complaint asks that the order admitting the will to probate be annulled, Charles J. Ferguson and Thomas Drake are attorneys for Mrs. Melhase.

To Show Pictures.

Pictures of the holy land, illustrative of the talks on the "Life of Christ," which are given every Sunday afternoon by Deaconess Knight, will be shown in the library hall, Friday evening at 8 o'clock. All women are welcome.

Klamath May Get Benefit of Freight Rate Ruling

That Klamath Falls may soon get lower freight rates from California over the Southern Pacific railroad is evidenced in a letter received this morning by Klamath Commercial Club from Bishop & Bahler of San Francisco, traffic managers engaged by the club and Business Men's Association to help get better rates. The letter explains more fully the telegram received Tuesday, which was printed in the Herald.

The letter follows in full: Confirming our telegram of today, copy of which is enclosed, relative to the reduction of freight rates between California points and Dorris and Klamath Falls.

HUGHES LEADS IN MINNESOTA BY 800 VOTES

Wilson Gets North Dakota, But West Virginia Goes to Hughes. New Hampshire Probably Will Join Republican Column, as Hughes is Now 279 in the Lead in This New England State.

United Press Service
NEW YORK, Nov. 9.—Either Minnesota or California are sufficient to re-elect Woodrow Wilson to the presidency. He now has 355 electoral votes sure, and needs ten more to elect. California has thirteen and Minnesota fourteen electoral votes. With 346 precincts missing Hughes is leading Minnesota by 800 popular votes.

United Press Service
SAN FRANCISCO, Nov. 9.—Complete official returns show Wilson carried San Francisco county by a majority of 15,094 votes.

United Press Service
LOS ANGELES, Nov. 9.—The latest returns indicate that Hughes carried Los Angeles county by 18,000 votes.

United Press Service.
BISMARCK, N. D., Nov. 9.—Nearly complete returns indicate that Wilson carried North Dakota by between 5,000 and 10,000 votes.

United Press Service.
WHEELING, W. Va., Nov. 9.—The democrats concede that West Virginia has gone to Hughes by 20,000 votes.

United Press Service
NEW YORK, Nov. 9.—Republican national headquarters expect to announce Hughes' election tonight, according to Chairman Wilcox. Democratic Chairman McCormick says the race is all over; Wilson has won.

CONCORD, N. H., Nov. 9.—With 49 precincts missing, Hughes is leading in New Hampshire by 279 votes.