

### No More Free Tickets

The Grand Union Tea Store takes this method of informing its patrons that after April 1 no more premium tickets will be given out, and to request those having tickets to cash them in as soon as possible before April 1. This action is required by the state law and must be enforced.

GRAND UNION TEA CO.  
34-4c B. P. Lewis, Mgr.

## Lake's Ship Building Is Now in Biggest Boom

United Press Service  
CLEVELAND, O., March 28.—Cleveland lake ports are experiencing the greatest ship building boom in years. Ship yards and drydocks are working day and night. Employees, mostly skilled, are scarce, and wages are 10 to 15 per cent higher than in past years.

"About \$27,000,000 is invested in contracts in Great Lakes ship yards for vessels to be delivered within the next two years," said H. C. Estep, editor of a marine trade paper here. "Sixty ships have been contracted for by Great Lakes companies. Four companies will deliver the bulk of these ships: The American Shipbuilding company, Great Lakes Engineer-

ing company, Toledo Shipbuilding company and the Manitowoc Drydock and Shipbuilding company. A large part of the ships contracted for will be used on salt water. These must not be more than 261 feet over all, so they can pass through the Welland canal. Eight great 600 foot bulk cargo boats have been ordered for 1916 delivery and will be used in the iron ore trade."

A. G. Smith, general manager of the American Shipbuilding company, states that all but nine of the twenty-six ships his firm has promised to deliver within the next two years are destined for salt water trade.

The Toledo Shipbuilding company is working on five schooners to be used in the Atlantic coast trade.

### New Implement House

We Handle the  
**INTERNATIONAL HARVESTER COMPANY'S IMPLEMENTS AND OLIVER PLOWS, KENTUCKY DRILLS, WEBER WAGONS, KEYSTONE SPRING TOOTH HARROWS AND DISCS**  
REPAIRS FOR ALL MACHINES

**Mills & Son**  
Phone 9 Sixth and Klamath

## Wood

Buy the great big blocks. They are clean and economical.  
Good body wood cut from live trees, and well seasoned.

A. J. MANNING  
Leave orders at Ward & Obenbain's. Phone 34.

## Local News Happenings

in and about Town

**Goes Home Tomorrow.**  
Mrs. Jess Sweeney of Shippington, who was operated on last Wednesday

for appendicitis and complications, by Drs. Hamilton and Merryman, will be taken home tomorrow.

**Your Opportunity.**  
We must have more room for our growing automobile tire business, and are offering our entire stock of high class leather bags and suit cases at cost. Bradley Harness Co. 28-31

**Undergoes Operation.**  
Mrs. W. H. Powell, sister of Mrs. F. R. Olds, who was operated on a week ago Sunday morning for appendicitis and intestinal tumors, by Drs. Hamilton and Merryman, is able to be up and will soon be out.

**For 100 Per Cent Babies**  
Our new line of 100 per cent Folding Sulkies just from the factory. Reversible and removable hood; spring seat; adjustable reclining back; neat mud guards; tubular steel frame construction, with oil tempered springs. \$5.00, \$5.50, \$6.50, \$7.50.

WILLIS-JOHNSTONE CO.

### Funeral of William Shaw Was Held This Afternoon

(Continued from page 1)  
received his college education. Here it was again an uphill fight, for the lad, having no relatives, not only had to carry on his studies in a manner

Accurate information about city property and farm lands. Ask Chilcote.

to allow him to finish as soon as possible, but to earn his entire living expenses as well. But Shaw was ambitious, and he finished with high honors.

Deciding upon the law as a calling, he next took up the study of this profession at Creighton Law School. Here, also, he was a remarkable student, and even before his graduation he was connected with the Juvenile court of Omaha. Needless to say, he was remarkably adapted to this. His early days in New York, friendless and penniless, and his later years of toil made him realize most keenly the problems of the youngsters haled into the court. He knew they needed encouragement, not punishment, and he was one of the first to take up their

Burbank potatoes, 75c per sack. 22-1f ROBERTS & WHITMORE.

## Bon Ton CORSETS



## A New Era in Corsetry

### Since Front Laced Corsets Have Been Perfected

Fifteen years ago you had no choice, you accepted your corset, attempted to adapt your figure to it, and rarely, if ever, succeeded in doing so. Fifteen years ago Front Lacing was unknown. You strained, and lamedly did your best to locate your lacing. Today you stand in front of your mirror and see the adjustment. You mould your figure lines each day, retain your youth and safeguard your health.

Have you had trouble in combining style and comfort in a corset? You know that style and comfort can go together, but do you get it? Ask the girls to show you the many new models now in stock, and you'll see how perfectly we have combined them.

The new style features will appeal to you immediately; the material and workmanship are such as will attract women who recognize quality in such things. You'll appreciate the comfort part when you wear the style which is designed for just such figures as yours.

**Front Laced Corsets at \$1.50, \$2, \$2.50 and Up to \$6**

Corset department located in Annex, entrance Main Store, Aisle 1, or 115 Fourth street.

## ROYAL WORCESTER CORSETS



## This Store Now Occupies Seven Thousand Square Feet of Floor Space

And carries the largest open stock of Drygoods, including everything-to-wear for men, women and children in Southern Oregon. You'll find the women's ready-to-wear-department complete in every detail. Suits, Coats, Skirts, Waists, Dresses and Petticoats at lower prices for the same quality than you have ever seen in Klamath county. Every garment is 1916 style.

**Local Agency**  
For Butterick Patterns and Publications.

## GOLDEN RULE VANNICE BROTHERS

**Local Agency**  
For Munsing Co. Underwear for the entire family.

# PAINTS

## Big Basin Lumber Company

PHONE 107  
Klamath Falls Oregon

You would be surprised to know how little it would cost to paint your house. We have a line that we are closing out below cost—CAN SAVE YOU MONEY. Let us tell you how much.

### HOUSTON'S Metropolitan Amusements

**HOUSTON OPERA HOUSE**  
TONIGHT  
EASTERN JUBILEE QUARTET

Reserved Seats ..... 50 Cents  
General Admission ..... 35 Cents  
Matinee ..... 25 Cents

**STAR THEATER**  
"Mrs. Wiggs of the Cabbage Patch"  
Six Reel World Feature Comedy

**TEMPLE THEATER**  
"Her Lesson,"  
Essanny Two Reel Drama  
"It Happened in Snakoville,"  
Essanny Comedy  
"The Broken Wire,"  
Kalem Drama

Admission Always 10c  
MATINEE DAILY at 2:30  
ALL LICENSED PICTURES

**MERRILL OPERA HOUSE**  
Merrill, Ore.  
MOTION PICTURES WEDNESDAY AND SATURDAY

### ON YOUR WAY

around don't fail to stop in here. We shall be glad to see you whether it is your intention or not to purchase

## WOOD and HAY

Your visit will make you acquainted with us anyway and the big variety and little prices are bound to come to you the next time you require anything in our line. So stop in if only for a look.

**Seehorn GETZ Wood**  
Phone 72 622 Main Street

# JOIN OUR MUSICAL CLUB

Any reliable person may now have all the music of the world and most of the fun of it right in their own home, if they join our Grafonola Club.

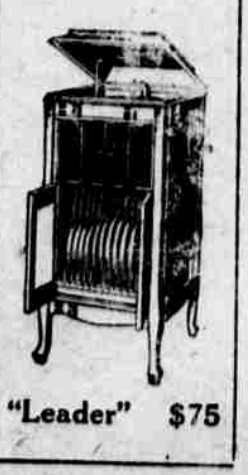
## Pay One Dollar Initiation

When you accept delivery of the \$15.00 Baby Grafonola, then add one dollar to your payments each month until payment in full is made.

The Object of These Terms Is Two-fold

FIRST: It enables you to secure a fine selection of Records at the start. SECOND: The payments grow larger as Klamath County's payroll increases.

REMEMBER, this club is open for membership Wednesday, March 29th, and is held open for one week, closing Wednesday evening, April 5th. Special terms on larger Grafonolas—so why not drop in and have a thorough demonstration.



Next Door to Postoffice **SHEPHERD PIANO DEPOT** Klamath Falls, Oregon

Women in England have now taken up the work of oxyacetylene welding.

Women are now allowed to enter the Columbia University medical

Mrs. Bertha Young manages a lucrative lumber business in Minneapolis.

An Aetna disability policy protects your income. See Chilcote. 2

Hospitals all over Europe are sending out calls for women physicians.

**TOO LATE TO CLASSIFY**

PIANO BARGAINS—Pianos taken in exchange on Players, \$125 to \$200, terms, \$5 or \$8 per month; tell us your wants. Shepherd Piano Depot, next door to postoffice. 28-1f

FOR RENT—Furnished rooming house; centrally located. Enquire at 631 Main street. 28-61\*

FOR RENT—Nice front room in private residence to right party. Enquire at 317 Tenth street. 28-31

**WATCH FOR THE YELLOW CARS**  
The Best Auto Service in the City

**CARS FOR HIRE**  
Day or Night

**KLAMATH FALLS AUTO COMPANY**  
Phone 17 1157 Main Street