

Bryan Joins President's Opponents

PARTY'S HEADS STEW

United Press Service

WASHINGTON, D. C., Nov. 9.—Evidence of increased open opposition to the Wilson administration's "naval preparedness plan" from democrats is coming to light fast since Congressman Kitchin's break with the president on the subject, and former Secretary of State Bryan's open opposition.

In the fight which is to be waged on the bill, personalities will not figure, the opposition being based solely on a fight against the principles laid down in the measure. This is being strongly emphasized by all opponents of the administration.

How far Bryan will go in opposing the president's preparedness policy is a question that is causing worry for the democratic leaders.

These men contend that the country will in general support Wilson in the issue.

Some state that they expect no attack from the republican legislators, and believing that the country favors the program for defense and naval increase, they declare that defeat awaits any party or group opposing the issue.

MITTMEN ARE TO REGALE CLUBMEN

ATHLETIC CLUB SMOKER CARD WILL INCLUDE A TEN-ROUND MAIN EVENT AND SEVERAL PRELIMINARIES

The next event for the members of the Klamath Athletic Club is scheduled for a week from tonight, when another of the club's smokers will be held.

Boxing will be the principal sport for the evening, and Manager Free has arranged a ten-round exhibition of the main art as the main event. Besides this bout, there will be four preliminaries of four rounds each, and a wrestling bout.

The evening's program will include some trapeze work and other gymnastics.

New Jersey has an old blue law under which women are still arrested and fined for being common soldiers.

Business Men to Have Smoker and Election

The Klamath Business Men's Association will hold its election of officers on the night of November 17th. Just to celebrate the occasion, the merchants will follow the business session with a social evening and a smoker. Speeches and other stunts will entertain the purchasers of butter, silk, mowing machines, watches and other goods.

SHIPMENTS OF CATTLE, SHEEP LIVELIER NOW

MANY CARLOADS TO GO OUT THIS WEEK

Klamath County Cattle, Hogs and Sheep Are Being Shipped Out in Large Numbers to Outside Points, and At Prices Being Paid, There is Every Indication of Prosperity Among the Ranchers.

While Klamath county's horses are in demand and are being looked over regularly by the buyers for foreign armies as well as Middle West concerns, this is not the only class of livestock being sent out from this section. The shipments of cattle, sheep, and hogs are also steady, and the demand is good for all that can be furnished.

A. F. Hunt of the Hunt Commission company is now operating with J. C. Mitchell in some deals here, and they are steadily sending out livestock to San Francisco and Oakland markets. Last week they shipped out fourteen cars of cattle. Thursday they will send out ten cars, and they have just purchased 250 head in the Sprague River country for shipment next week.

C. Swanson & Son of Sacramento took six cars of cattle to the California capital last week, and are making other purchases, while George Watt has just returned from San Francisco after delivering a few cars of steers and hogs to the Western Meat company.

The Scully operations consisted of a car of hogs to San Francisco last week. Scully is preparing to ship a car of calves from Dorris on Thursday's stock special.

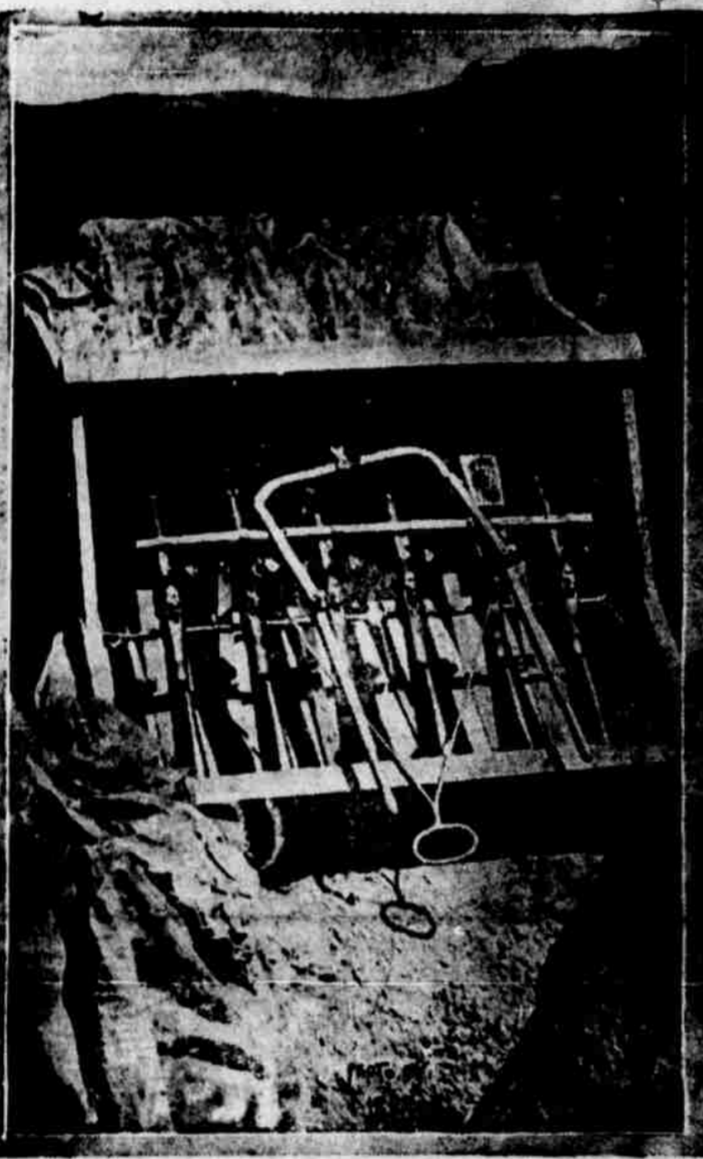
The mutton situation is most promising, and it is estimated that there are 10,000 lambs in the vicinity of Merrill, being fed alfalfa for conditioning preparatory to shipping. These are sheep from the Lava Beds, and they are being fed on different ranches.

Thirteen cars of lambs will go on Thursday to Levy & Co. and Johnson & Son of San Francisco from Midland. These are to be shipped by O. T. McKendree.

Louis Gerber and his partner, operating as Barrows & Gerber, have delivered 1,800 head of fine breeding ewes to Andy Forsyth of Reno. The sheep were sold while ranging near Tule Lake.

Gerber, in addition to being a horseman and cattleman of great foresight, has proven himself even more versatile in the stock line. Besides his successful ventures in sheep, Louis is feeding 500 hogs at the Stukel ranch on Lost River, near Merrill. His friends expect him to keep on until he even takes up poultry shipping—and they gamble he'll make a success of it if he does.

When One French Soldier Does the Work of Six



This peculiar looking box filled with rifles is the latest improvisation of the French soldiers in the trenches. When they have not sufficient rapid fire guns they build one of their own. Six rifles laid in a box with a contrivance to pull the six triggers can thus be operated by one man. The five other gun bearers may be off resting or digging trenches while one soldier guards them and holds the trench.

RUSHING WORK IN HARNEY COUNTY STATE LINE BAR GETS DEATH BLOW

LARGE CREW OF MEN ON CONSTRUCTION WORK ON RAILROAD THAT WILL EVENTUALLY TAP THIS SECTION

Interesting news relative to the railroad work which is being carried on in Harney county will no doubt tend to enliven the future prospects of Klamath county and adjacent territory.

Steam shovels, grading crews, track layers, etc., are busily engaged in making cuts, constructing roadbed and laying track at a point about ten miles southeast of Riverside; bridge crews are putting finishing touches to the structure over Coleman Creek, and as soon as this is completed, the track laying will continue to Crane Creek.

Upon the completion of laying rails to Harney Valley, Twoby brothers, contractors, will push the construction work across the plains to connect with the extension from Klamath to Kirk.

An engineering crew of the Harriman lines are now in the neighborhood of Harney Valley, looking over the proposed work from Harriman on. This being an open country tends to greatly facilitate the work of construction, as under ordinary weather conditions men would be enabled to work all winter.

London has elaborated the trade school idea to include the work of outfitting women with the equipment to face life's struggle.

SISKIYOU COUNTY REFUSES TO GRANT A LICENSE FOR ROAD HOUSE TWO MILES FROM THE TOWN OF MERRILL

The petition of Fred J. Teel for a license to operate a saloon and road house just over the California line, two miles from Merrill, was denied at the last meeting of the board of supervisors of Siskiyou county. This action was largely taken on a lengthy protest signed by many residents of Merrill and Bradnack.

Teel has been an employe of Fred Clubine of Merrill, who conducted a saloon in Merrill, and the petition for a license stated the saloon would be conducted on property owned by Clubine. This action by the Siskiyou court will make it necessary for the thirty webfoots to travel a longer distance or stoop to "patronizing mail order houses" next year to secure stimulant.

Auto-Wagon Collision.

An automobile driven by J. W. Neuhart, which some allege did not have its lights burning, collided with a buggy belonging to J. C. Dodd and occupied by Dodd and two other men, at dusk last night on Sixth street, beyond the railroad. The auto collided with the rear of the buggy, smashing the horse-drawn vehicle and throwing out the occupants. None of the men were injured.

Pennsylvania has nearly 800 women physicians.

STRAHORN VISIT TO BE MADE BIG OCCASION HERE

ALL KLAMATH COUNTY WILL PARTICIPATE

Automobiles Will Carry Klamath People to Bend to Attend Big Joint Meeting With Railroad Men There November 16th—Big Banquet and Rally Will Be Held While Strahorn Party is in Klamath.

Great are the plans under way by the Commercial Club for the reception of Robert Strahorn and his associates in the Central Oregon railway development scheme, who are to be in Klamath Falls this month. Klamath people realize their greatest need to be railroad development, and the club will arrange a program which will give the railroad men a good opportunity to see the optimism and enthusiasm of this section, a great factor in the progress of any community.

This will be one of the matters for discussion at tonight's meeting of the executive board of the Commercial Club. Committees, etc., will no doubt be named at this time to take charge of different phases of the work.

The railroad men will reach Bend November 16th, and there they will meet representatives of the different Central Oregon sections to be reached by the railroad. Klamath Falls people want Klamath county to have the biggest and most enthusiastic representation present, and there will be a number of auto loads of local people going to Bend for the big occasion.

Following the session in Bend, the Strahorn party will go by auto to Silver Lake, Paisley, Lakeview and the other places to be connected by railroad, to get accurate data from each place, and also sound the people as to their faith in the enterprise and willingness to assist. They will reach Klamath Falls about November 20th.

The occasion of the visit, the Commercial Club hopes, will be one of the biggest rallies ever held in the county. There will be a big banquet and booster meeting at the White Pelican, possibly on the 21st. The day will be made a "railroad day," and much good is expected to be accomplished as a result of concerted action.

GERMANY DENIES PASSPORT FRAUD

OFFICIAL NOTE TO U. S. DEPARTMENT DENIES KNOWLEDGE OF FALSE ISSUANCES, AND LAYS THE BLAME ON BELGIANS

WASHINGTON, D. C., Nov. 9.—Germany's note disclaiming responsibility for the fraudulent issuance of passports has arrived by mail. This, it is stated, charges the Belgians as the responsible parties.

In the note, it is averred that the German government has discovered an organization at Antwerp for forging American passports. These are presumed by the empire to have been for use of Belgian spies in Germany.

Dutch suffragists are now working hard to get an equal suffrage clause incorporated in the new constitution to be passed on next month.

Minneapolis has a home for working women.

WAR TORN SERBIA STILL THE CENTER OF EUROPE'S FIGHT

United Press Service

ATHENS, Nov. 9.—The French and British expeditionary forces operating in the Balkans, are steadily pushing the Bulgarians northward in the southern Serbian zone. The allies are landing more men at Salonika daily, and their increase in strength is taken by some critics as an indication of the allies' intention of countering the Teutonic advance into Serbia from the north, and a determined effort to prevent the central allies from gaining communication with Turkish territory.

Heavy fighting continues in the Velez district, where the allies continue their northward movement. Here the Bulgarians yesterday made a terrific and determined counter attack, but this was unable to stop the advance of the Franco-British.

United Press Service

BERLIN, Nov. 9.—Shattered in morale and decimated and worn from five weeks of incessant fighting with the Austro-German invaders, the remnant of King Peter's valiant Serbian army is retreating from Serbian territory to Montenegro.

The country through which they are traveling is the wildest and roughest of the Balkans, so the Serbs have a good chance of escaping without further material loss.

The Austro-Germans are giving more attention to clearing the conquered section of Serbia of troublesome guerrillas and snipers than they are to the pursuit of the retreating Slavs.

United Press Service

COPENHAGEN, Nov. 9.—The damage inflicted by the Serbians in the railway line to the Orient are so serious that the German advance to a junction with Turkish forces will be seriously delayed, while troops are busily engaged in repairing the railway.

United Press Service

LONDON, Nov. 9.—The behavior of Greece is alarming to the allies. Pro-Germanism is growing in Athens, and according to inside information, the Greeks may not remain neutral.

It is rumored already that a Greco-Bulgarian agreement has been reached regarding the disposition of Balkan territory and seaports, should

Greece participate with the Teutonic allies.

United Press Service

PARIS, Nov. 9.—The hottest submarine campaign thus far in the war is predicted to start soon in the vicinity of Salonika, just as soon as the German fleet, which is known to be en route, can arrive.

Practically all of Germany's new super-submarines are said to have been dispatched to Mediterranean waters.

The French cabinet today authorized the minister of finance to introduce in the chamber of deputies a bill for another 5 per cent loan. He was also authorized to levy on the profits of industries benefited by the war.

The former American steamer Dacia, now the French transport Yerm, which figured in international circles a few months ago, and an Italian steamer were sunk by German submarines in the Mediterranean yesterday.

BIG STOCK RANCH HAS NEW OWNER

STOKERMAN TRANSFERS PLACE IN BLY COUNTRY—NEW OWNER WILL ENGAGE IN RAISING THOROUGHBRED STOCK

Another large realty deal was recently consummated when a 720-acre stock ranch, situated about twelve miles this side of Bly was purchased for a consideration ranging in the neighborhood of \$18,000.

S. A. White, who transferred his holdings to Gilbert C. Harrison, will leave shortly for Reno, to visit his son, who is engaged in business there. Mr. Harrison, the new owner, will engage in the raising of thoroughbred stock.

Mme. Sarah Bernhardt, the famous French actress, is vice president of the Cripple's Welfare Society.

Farmers in England are now preparing to pay women the same wages as given to the men called away to war.

New Auto Ordinance Allows More Speed

Automobiles and auto traffic came in for some attention at last night's council meeting, and if an ordinance introduced at this time is passed, our streets will be much the same as San Francisco's Market street, where the speed with which the autos flash by is a marvel to the beholder, and a terror to the rube attempting to cross the thoroughfare.

The ordinance contains several amendments to the present ordinance regulating traffic. It sets the maximum speed for any vehicle to travel on any street or road in the city at "not exceeding one mile in four minutes."

This figure, out at fifteen miles an hour, or five miles per hour faster than at present.

Another amendment forbids any vehicle standing at any point on Main street between Second and Ninth streets for more than twenty minutes at any one time. A third amendment makes it unlawful for any vehicle to stop within thirty feet of any street corner.

Regarding streets where vehicles will be allowed to stand, the ordinance provides "that they shall run in to the curb in the vicinity of travel, with front end of car at an angle of approximately 45 degrees to the curb line."