

Herald's Classified Advs.

FOR RENT

FOR RENT—Four room furnished house, 33, corner Mansanilla and Railroad; rear of new court house; second street off Crescent, running toward railroad. Get key next door or across street. 19-6t\*

FOR RENT—My home of 4 large rooms, with every convenience; newly papered and varnished; hot water coil in heater. J. S. Peck, 741 Walnut. 21-6t\*

OFFICE ROOMS—Choice suites in the Odd Fellows and Willis buildings; best location in the city. See W. O. Smith, Herald office. 20-4t

FOR SALE

FOR SALE OR TRADE—House and two lots. This is worth investigating. Address box 564, city. 23-6t\*

LOST AND FOUND

LOST—Klamath Falls-Merrill road, shotgun breech block. Leave at Gun Store; reward, Fred J. Beldin, Merrill, Oregon. 14\*

PROFESSIONAL CARDS

CITY AND COUNTY ABSTRACT COMPANY ABSTRACTS INSURANCE Members Oregon Association Title Men

Office and Residence, Phone 118 NW cor. 7th and Main CLAYTON E. WHEELEN Physician and Surgeon Osteopath Spondylotherapist (Spinal Treatment) Office hours: 9 to 11:30 a. m.; 2 to 5 p. m.; evenings, 7 to 9

THE KLAMATH FALLS STEAM LAUNDRY Guarantee first class work as well as first class service. If you have occasion to make complaint and do not get immediate attention, phone D. B. CAMPBELL

Wood! Wood! Block Wood, Load \$2.50 Block Wood, Double load \$2.50 (Extra on hill) 16-inch Body Wood 16-inch Limb Wood 4-ft. Body Wood 4-ft. Limb Wood Leave Orders at Square Deal Store Our Sixth and Main P. C. CARLSON Phone 185

WOOD Blockwood, Load \$2.75 Blockwood, double load \$2.75 16-inch Green Slab \$2.75 16-inch Dry Slab \$2.50 Dry Slab, 4-foot \$2.00 Buy your green slab early KLAMATH FUEL CO., Office 505 Main, O. Peyton, Mgr Phone 187.

How's Your Roof? Prepare for the coming rain and snow by having your roof repaired now. W. D. Miller Does general roofing and repair work. Also handles concrete brick and tiles, building and chimney blocks. Call at Block Factory, Sixth Street, near Klamath Avenue.

SCHLITZ BEER FOR THE FAMILY KLAMATH LIQUOR COMPANY

The Evening Herald

W. O. SMITH, Editor Published daily except Sunday by The Herald Publishing Company of Klamath Falls, at 115 Fourth Street Entered at the postoffice at Klamath Falls, Oregon, for transmission through the mails as second-class matter.

Subscription terms by mail to any address in the United States: One year \$5.00 One month .50

KLAMATH FALLS, OREGON WEDNESDAY, NOVEMBER 25, 1914



AND STOP AT KLAMATH FALLS

HYPOCRITICAL PRAYER

A LITTLE while ago President Wilson issued a proclamation calling upon the American people to unite in prayer for the cessation of the war that is desolating Europe.

A nation that supports the president in his call for prayer is doing right, but that prayer is not higher than the market price of musket balls and bayonets, says an Exchange.

God was not home when that prayer was delivered.

On the Saturday before the American people assembled in their churches and synagogues to pray to God for peace, a ship left the New York harbor with 15,000,000 rifle cartridges in her hold for the wholesale killing of the soldiers engaged in the war they had the audacity to ask God to end.

Prayers Are Cheap, But There Is Profit in Rifle Cartridges.

To pray to God to send peace while furnishing the armies with shot and shell for their mutual destruction is not only the rankest hypocrisy, but the vilest of blasphemy.

PANAMA RATES

THE new rates from the Pacific Coast by way of the Panama canal have been already announced by some of the steamship lines. It appears that Eastern produce farmers will have to meet still more severe competition when freight rates are cut from 50 to 75 per cent from the former charges.

Pacific Coast shippers will save from \$100 to \$200 per car load, even allowing for charges of shipment from their orchards to the seaport.

The rates for apples are not out yet, but judging by the charges on dried fruit and some other produce, it will cost less than one-half the present amount to ship apples by water from the orchards of Oregon and Washington to New York and Boston. The advantage will be somewhat offset by the long time required for the water trip, and by various transfers.

Scattered Shots AND WE CAN also be thankful that we don't have to go to war—as yet.

A CLEAN TOWN is a healthy town.

A CHEERY SMILE, a slap on the shoulder, a word of encouragement—nothing like them to cause a man to brace his shoulders, look Hard Luck in the face and say, "Do your duty—dest, old kid, I'm going to beat you!"

THE GRANGE is the latest to refuse to endorse equal suffrage. Woman's place is drudging in the kitchen, cooking for a threshing crew, milking cows and doing a man's work in the field, we suppose.

IT MAY SEEM A LITTLE out of season, but once more we let out that time-honored whoop: "Swat the fly!" Don't let the pests spend the winter in your house, or in the spring they'll be worse than ever.

THESE MINES, like bullets, seem to be no respecters of persons or ships.

THERE'S NO WAY OUT of it, that Russian campaign into Prussia and back again has been just that, a rushin' campaign.

AS THE EXAMINER puts it, "England will fight to the last Frenchman."

SOME MINOR WAR NEWS FROM EUROPE

LITTLE STORIES FROM THE FRONT THAT ARE COMING IN THROUGH THE CAPITALS OF THE NATIONS NOW FIGHTING EACH OTHER—SOME ARE TRIVIAL, BUT ALL ARE INTERESTING AT THIS TIME.

LONDON—A mile-and-a-half crawl with five bullets in his body, under artillery and rifle fire, was the awful experience of Private Dan Hurst of the Clodstream Guards.

Writing to his wife, Hurst says, "Don't fret over me. I have five wounds, but I am a lucky chap to be here to tell the tale, for if the shell which hit me in the chest had exploded a bit lower I should have been killed outright. Our ambulance men tried to get us away, but the Germans fired upon them so they had to leave us to take our chances. It rained in torrents all that night and the Germans put sentries with bayonets over us. They took all our food and water away, and on the following day some of them tried to make out that we had been firing upon them. We asked how that was possible when they had taken everything from us, but they were going to shoot us, when an officer came up and stopped them. On Wednesday they removed us to the far side of a haystack out of their line of fire, so we could not get hit, but one of the British shells exploded near us, and, of course, I got hit. We thought it best to make a dash for it. I could not walk and had to crawl on my hands and knees with my wounds bleeding, and while I was crawling away they started to fire on us. Six of us started, but only two of us finished. Our trenches were only a mile and a half away, but it took us four hours and a half to crawl there."

A photographer in Southampton is showing outside his studio an apt comment of the war. Last September the Duke of Westminster and other British sportsmen sent round a circular letter asking for subscription to the Olympic Games to be held in Berlin, and in the request were the following words: "In honor bound, Great Britain must send a team to Berlin—this object can only be accomplished by efficient organization and adequate financial support."

The photographer has written below by way of comment: "The response to the above appeal has been most successful, the money has been found; and the team most thoroughly equipped, is now well on its way to Berlin. Very little doubt exists that all the prizes will fall into its arms." This effort is headed, "In Honor Bound."

LONDON—"Day and night the agony of Antwerp is present with me," said the Bishop of London, who was preaching at St. Nicholas Cole Abbey, "but if there be a God in heaven, the wrongs of Belgium—absolutely innocent in this war—will one day be avenged."

"For myself, when I have boys whom I love as my own sons killed every day, and my rooms filled daily with their sisters and their young widows, I feel that I should go mad for my religion."

London is a city of gloom after sunset, owing to the determination of the authorities not to allow hostile aerial raiders to recognize particular districts by the street lighting.

London is a city of gloom after sunset, owing to the determination of the authorities not to allow hostile aerial raiders to recognize particular districts by the street lighting.

London is a city of gloom after sunset, owing to the determination of the authorities not to allow hostile aerial raiders to recognize particular districts by the street lighting.

London is a city of gloom after sunset, owing to the determination of the authorities not to allow hostile aerial raiders to recognize particular districts by the street lighting.

London is a city of gloom after sunset, owing to the determination of the authorities not to allow hostile aerial raiders to recognize particular districts by the street lighting.

London is a city of gloom after sunset, owing to the determination of the authorities not to allow hostile aerial raiders to recognize particular districts by the street lighting.

London is a city of gloom after sunset, owing to the determination of the authorities not to allow hostile aerial raiders to recognize particular districts by the street lighting.

London is a city of gloom after sunset, owing to the determination of the authorities not to allow hostile aerial raiders to recognize particular districts by the street lighting.

London is a city of gloom after sunset, owing to the determination of the authorities not to allow hostile aerial raiders to recognize particular districts by the street lighting.

London is a city of gloom after sunset, owing to the determination of the authorities not to allow hostile aerial raiders to recognize particular districts by the street lighting.

London is a city of gloom after sunset, owing to the determination of the authorities not to allow hostile aerial raiders to recognize particular districts by the street lighting.

London is a city of gloom after sunset, owing to the determination of the authorities not to allow hostile aerial raiders to recognize particular districts by the street lighting.

London is a city of gloom after sunset, owing to the determination of the authorities not to allow hostile aerial raiders to recognize particular districts by the street lighting.

London is a city of gloom after sunset, owing to the determination of the authorities not to allow hostile aerial raiders to recognize particular districts by the street lighting.

London is a city of gloom after sunset, owing to the determination of the authorities not to allow hostile aerial raiders to recognize particular districts by the street lighting.

London is a city of gloom after sunset, owing to the determination of the authorities not to allow hostile aerial raiders to recognize particular districts by the street lighting.

London is a city of gloom after sunset, owing to the determination of the authorities not to allow hostile aerial raiders to recognize particular districts by the street lighting.

London is a city of gloom after sunset, owing to the determination of the authorities not to allow hostile aerial raiders to recognize particular districts by the street lighting.

London is a city of gloom after sunset, owing to the determination of the authorities not to allow hostile aerial raiders to recognize particular districts by the street lighting.

London is a city of gloom after sunset, owing to the determination of the authorities not to allow hostile aerial raiders to recognize particular districts by the street lighting.

London is a city of gloom after sunset, owing to the determination of the authorities not to allow hostile aerial raiders to recognize particular districts by the street lighting.

London is a city of gloom after sunset, owing to the determination of the authorities not to allow hostile aerial raiders to recognize particular districts by the street lighting.

Klamath County Lands Just Restored to Entry by U. S.

Will Be Open to Filing January 29th—Settlement Before December 30th to Be Considered Trespassing

A complete list of the Oregon lands in the Klamath project restored to entry is given below. The following is a copy of the order just received by the land office at Lakeview:

You are hereby advised and instructed to appropriately note that on October 21, 1914, the first assistant secretary of the interior vacated former departmental orders of July 19, 1904, and January 25, 1905, in so far as they affect the withdrawals under the first and second forms under the act of June 17, 1902 (32 Stat. 388), for use in connection with the Klamath project, Oregon, of the hereinafter described lands, and by his authority such of said tracts as have not been formerly restored and are not otherwise withdrawn, reserved or appropriated, or covered by existing entry, will be subject to settlement under the public land laws of the United States on and after December 30, 1914, at 9 a. m., and will be subject to entry, filing, or selection January 29, 1915, at 9 a. m., at the United States land office at Lakeview, Ore.

Warning is hereby expressly given that all persons who go upon any of the lands to be restored hereunder and perform any act of settlement thereon prior to 9 o'clock a. m., standard time, December 30, 1914, or who are on or occupying any part of said lands at such hour, except those having valid subsisting settlement rights initiated prior to withdrawal from settlement and since maintained, will be considered and dealt with as trespassers, and will gain no rights whatever under such unlawful settlement or occupancy; provided, however, that nothing herein contained shall prevent persons from going upon and over the lands to examine them with a view to thereafter going upon and making settlement thereon when the land shall become subject thereto, in accordance with this notice. Persons having prior settlement rights, as above defined, will be allowed to make entry in conformity with existing law and regulations. Intending settlers are also warned to ascertain the status of the surveyed lands and get all information available as to the unsurveyed lands by inquiry at the local land office before making settlement thereon. These lands contain no power possibilities and are not subject to preference right of selection by the state under the act of August 18, 1914 (28 Stat. 1364).

Klamath Project, Oregon, Willamette Meridian

Township 39 S, Range 8 E—8 1/2 NW 1/4, 8 1/2 NE 1/4, 8 1/2 SW 1/4, 8 1/2 SE 1/4, Section 12; 8 1/2 NE 1/4, 8 1/2 SE 1/4, Section 14; 8 1/2 NE 1/4, 8 1/2 SE 1/4, Section 22; all Sections 23 and 24; N 1/2 SW 1/4, N 1/2 SE 1/4, SW 1/4 SE 1/4, Section 23; all Sections 26 and 27; N 1/2 NW 1/4, E 1/2 SE 1/4, SW 1/4 SE 1/4, Section 28; E 1/2, Section 29; W 1/2 SW 1/4, SE 1/4, Section 30; all Sections 31 to 33 inclusive; W 1/2 Section 36

Township 40 S, Range 8 E—W 1/2 NW 1/4, 8 1/2, Section 1; all Sections 2 to 5 inclusive; E 1/2 NW 1/4, E 1/2 SW 1/4, Section 6; NE 1/4, NE 1/4 SE 1/4, Section 7; all Sections 11, 12, 13; NE 1/4, N 1/2 NW 1/4, Lot 1, Section 14; SW 1/4 NE 1/4, 8 1/2 NW 1/4, 8 1/2, Section 15; 8 1/2 NE 1/4, 8 1/2, Section 16; NNW 1/4 NW 1/4, 8 1/2, Section 17; all Sections 18 to 36 inclusive.

Township 41 S, Range 8 E—All Sections 1, 2; E 1/2, E 1/2 NW 1/4, NE 1/4 SW 1/4, Section 3; all fractional Section 7; NE 1/4, N 1/2 SE 1/4, SE 1/4 NE 1/4, NW 1/4, E 1/2 SW 1/4, SE 1/4, Section 12; NE 1/4, Section 13; N 1/2, Section 18.

Township 41 S, Range 10 E—All Sections 1, 2; E 1/2, E 1/2 NW 1/4, NE 1/4 SW 1/4, Section 3; all fractional Section 7; NE 1/4, N 1/2 SE 1/4, SE 1/4 NE 1/4, NW 1/4, E 1/2 SW 1/4, SE 1/4, Section 12; NE 1/4, Section 13; N 1/2, Section 18.

Township 39 S, Range 11 E—N 1/2 NE 1/4, SE 1/4 NE 1/4, N 1/2 NW 1/4, SW 1/4 NW 1/4, W 1/2 SW 1/4, SE 1/4, Section 12; all Sections 19 1/2, 20, 21, 22.

Township 39 S, Range 11 E—All Section 1; NE 1/4 NE 1/4, 8 1/2 NE 1/4, NW 1/4, 8 1/2, Section 3; all Sections 3

Section 34; all Section 35; NE 1/4, SW 1/4, Section 36.

Township 41 S, Range 8 E—All Sections 1, 2; 8 1/2, Section 4; NE 1/4 SE 1/4, Section 5; all Sections 9, 10, 11, 12, N 1/2, Section 13; N 1/2, Section 14; N 1/2, Section 15; NE 1/4, NE 1/4 NW 1/4, Section 16.

Township 38 S, Range 9 E—NW 1/4 SW 1/4, 8 1/2 SW 1/4, Section 6; NW 1/4, Section 7; W 1/2 NW 1/4, SW 1/4, SW 1/4 SE 1/4, Section 18; W 1/2 NE 1/4, W 1/2 NE 1/4, Section 19; W 1/2 NE 1/4, N 1/2 SW 1/4, SE 1/4, Section 20; E 1/2 NE 1/4, Section 21; 8 1/2, E 1/2, W 1/2 NW 1/4, SE 1/4 NW 1/4, 8 1/2, Section 22; 8 1/2 NE 1/4, 8 1/2, Section 23; SW 1/4 NW 1/4, SW 1/4, SW 1/4 SE 1/4, Section 24.

Township 39 S, Range 9 E—W 1/2 SW 1/4, Section 2; all Sections 3, 4; E 1/2 SE 1/4, Section 5; N 1/2, 8 1/2 SW 1/4, N 1/2 SE 1/4, SE 1/4 SE 1/4, Section 9; all Section 10; SW 1/4 NE 1/4, W 1/2, SE 1/4, Section 11; NW 1/4, 8 1/2, 8 1/2 SW 1/4, Section 12; all Sections 14 to 16 inclusive; NE 1/4 NE 1/4, 8 1/2 NE 1/4, NE 1/4, W 1/2, Section 17; 8 1/2 NE 1/4, E 1/2 SE 1/4, Section 19; all Sections 20 to 27 inclusive; N 1/2 NE 1/4, SE 1/4 NE 1/4, N 1/2 NW 1/4, SW 1/4 NW 1/4, W 1/2 SW 1/4, NE 1/4 SE 1/4, Section 28; all Section 29; 8 1/2 SW 1/4, 8 1/2 SE 1/4, Section 30; N 1/2, N 1/2 SW 1/4, SE 1/4 SW 1/4, SE 1/4, Section 31; all Section 32; W 1/2 NW 1/4, SW 1/4, W 1/2 SE 1/4, Section 33; E 1/2, NE 1/4 NW 1/4, SE 1/4, Section 34; all Sections 35, 36.

Township 40 S, Range 9 E—NE 1/4 SW 1/4, SE 1/4, Section 1; N 1/2 NE 1/4, SW 1/4 NE 1/4, W 1/2, NW 1/4 SE 1/4, Section 2; N 1/2 NE 1/4, SE 1/4 NE 1/4, W 1/2, SE 1/4, Section 3; all Section 4; N 1/2, N 1/2 SW 1/4, N 1/2 SE 1/4, SE 1/4 NE 1/4, Section 5; SW 1/4 SW 1/4, Section 6; NW 1/4 NE 1/4, 8 1/2 NE 1/4, NW 1/4, 8 1/2, Section 7; E 1/2 NE 1/4, W 1/2 SW 1/4, SE 1/4, Section 8; W 1/2 SW 1/4, SE 1/4, SW 1/4, Section 9; N 1/2 E 1/2 SE 1/4, Section 9; all Section 10; W 1/2 NE 1/4, W 1/2, SE 1/4, Section 11; E 1/2, SE 1/4 SW 1/4, Section 12; E 1/2, NE 1/4 NW 1/4, 8 1/2 NW 1/4, SW 1/4, SE 1/4 SW 1/4, Section 13; W 1/2 SW 1/4, SE 1/4, NW 1/4, Section 14; NW 1/4, N 1/2 SW 1/4, N 1/2 SE 1/4, Section 15; E 1/2, NE 1/4, Section 16; W 1/2 NE 1/4, W 1/2, W 1/2 SE 1/4, SE 1/4, Section 17; all Sections 18 to 20 inclusive; W 1/2 SW 1/4, Section 21; SW 1/4 NW 1/4, SW 1/4, Section 22; NW 1/4 NE 1/4, 8 1/2 NE 1/4, W 1/2, SE 1/4, Section 23; all Sections 24 to 36 inclusive; W 1/2 NE 1/4, W 1/2, SE 1/4, Section 24; all Sections 25, 26.

Township 40 S, Range 11 E—SW 1/4 SE 1/4, SE 1/4, SE 1/4, Section 11; 8 1/2 SW 1/4, SE 1/4, Section 12; SE 1/4 SW 1/4, 8 1/2 SE 1/4, Section 13; E 1/2 NW 1/4, E 1/2 SW 1/4, Lot 4, Section 14; all Sections 15, 16, 17, 18, 19, 20 inclusive; NE 1/4 NE 1/4, SE 1/4 NE 1/4, W 1/2 NW 1/4, W 1/2 SW 1/4, SE 1/4 SW 1/4, Section 21; all Sections 22 to 33 inclusive; N 1/2 NE 1/4, SE 1/4, Section 27; N 1/2, E 1/2 SW 1/4, SE 1/4, Section 28; all Sections 29, 30, 31, 32, 33, 34, 35, 36.

Township 41 S, Range 12 E—W 1/2 SW 1/4, SE 1/4 SW 1/4, 8 1/2 SE 1/4, Section 1; all Sections 2 to 14 inclusive; E 1/2 Section 15; E 1/2, Section 17; fractional Section 24

Township 40 S, Range 13 E—All Sections 1 to 5 inclusive; E 1/2, SE 1/4 NW 1/4, NW 1/4, SW 1/4, 8 1/2 SW 1/4, Section 6; all Sections 9 to 16 inclusive; all Section 23; E 1/2, N 1/2 NW 1/4, NW 1/4, NE 1/4 NW 1/4, Section 24; SW 1/4, W 1/2 SE 1/4, SE 1/4, SW 1/4, Section 25.

Township 41 S, Range 12 E—W 1/2 SW 1/4, SE 1/4 SW 1/4, 8 1/2 SE 1/4, Section 1; all Sections 2 to 14 inclusive; E 1/2 Section 15; E 1/2, Section 17; fractional Section 24

Township 40 S, Range 13 E—All Sections 1 to 5 inclusive; E 1/2, SE 1/4 NW 1/4, NW 1/4, SW 1/4, 8 1/2 SW 1/4, Section 6; all Sections 9 to 16 inclusive; all Section 23; E 1/2, N 1/2 NW 1/4, NW 1/4, NE 1/4 NW 1/4, Section 24; SW 1/4, W 1/2 SE 1/4, SE 1/4, SW 1/4, Section 25.

Township 41 S, Range 13 E—All Section 1; N 1/2 NE 1/4, Section 2; W 1/2 NW 1/4, Section 12; N 1/2, SW 1/4, N 1/2, Section 13; W 1/2 SE 1/4, Section 18; W 1/2 NE 1/4, Section 19.

Township 40 S, Range 14 E—All Sections 4 to 8, 17 to 21, 28 to 32 inclusive.

Township 41 S, Range 14 E—All Sections 5 to 8, 17 to 20, inclusive.

Will Make Public Park The Ladies Improvement Club of Alturas has a movement on foot to make the open lots in front of the new court house into a public park. They appeared before the town trustees and explained their plans to them and were given their consent. They now intend to see the property owners and try to get options on the land, and if they are successful they will start to put the grounds in shape.—Alturas New Era.

Local news appears first in The Herald, 50c a month

LOOK!

Turkeys Chickens Fresh Eggs a Specialty FENCE POSTS

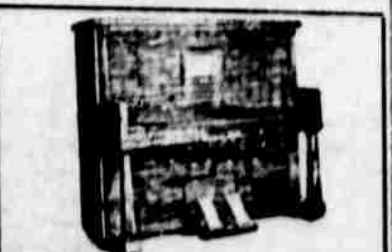
Bell's Cash Store Geo. A. Bell, Proprietor Mills Addition Phone 265-J

Ever Have Cold Feet?

Better get a good hot-water bottle and be comfortable. We have some of extra quality—guaranteed for two years. TWO-QUART \$1.50 THREE-QUART \$1.75

Also have a good line of other rubber goods, fountain syringes, etc., at attractive prices.

UNDERWOOD'S PHARMACY Corner Main and 7th Streets, Klamath Falls, Oregon



SOMETHING NEW We have just received a new model Player Piano, which has many individual features. First check for \$395 makes it yours. Call and hear this special player, sold at the price of a regular piano. Shepherd Piano Depot Next Door to the Postoffice

THE THANKS ARE REAL

For the prosperity that comes from steady saving, with possibly some self denial. The things we strive for are the things we appreciate when attained. You'll appreciate this fact in a few years after you have started a savings account with this bank. No one ever regretted such a step; no one ever will. FIRST STATE AND SAVINGS BANK KLAMATH FALLS, OREGON