

## BLOODY FIGHT CONTINUES IN YPRES REGION

United Press Service  
 PARIS, Nov. 10.—Undoubtedly the fighting of the past fortnight near Ypres has been the bloodiest of the war. Both sides lost heavily.

The Germans continue their mass attacks. The British ships are reported supporting the allies left flank.

The allies are holding the German attack in the vicinity of the Ypres, but the war office says the enemy is bringing tremendous pressure there in a supreme effort to penetrate. Ypres is burning.

The Germans are continuously using their artillery from a cover which the infantry have repeatedly assaulted in vain.

The latest communique says the Germans were repulsed in the vicinity of Bishote and Armentieres. This says the violent fighting was unabated, both armies endeavoring to maintain the offensive.

At other points along the front there is no change apparent.

## CITY VALUATION GAINS A MILLION

WITH THIS INCREASED VALUATION THERE IS NOT MUCH DANGER OF AN INCREASED TAX LEVY SOON.

According to figures submitted to the city of Klamath Falls by the county officials, the assessed valuation of property within the city is now \$2,322,803. This is an increase of over a million dollars over the valuation for last year.

This was brought up at last night's meeting of the council when the question of the next tax levy was raised. It was pointed out that the levy would be lower than last year, despite the fact that for a part of the coming year there will be no saloon license fees paid into the city's treasury.

## TO RODEO OR NOT TO RODEO

THIS IS A QUESTION WHOSE SOLUTION DEPENDS UPON THE ATTITUDE OF THE LOCAL BUSINESS MEN

O. W. Robertson is the new president of the Rodeo Amusement Association, who will have charge of the 1915 show if it should be decided to pull one off next year.

Whether or not there will be a rodeo in 1915 is still very doubtful, as many of those who handled the bulk of the work the past three years are not at all enthusiastic over the opportunity of having to neglect their private business in order to make the show a success. The new officers have decided to place the matter before the business men of the city, and it will be up to them to decide whether they want another show next year or not. Unless the local merchants are willing to provide entertainment for the visitors in the morning and evenings, there will be no show.

The annual meeting of the association was held Monday night, and the following officers were elected: O. W. Robertson president; J. E. Hodge vice president; H. M. Ackley secretary; C. H. Daggott treasurer; C. H. Underwood, W. C. Dalton, F. P. Grohs, L. C. Hismore and J. M. Holman directors.

The F. E. Wray farm near Silverton has just completed a silo 16 feet in diameter and 24 feet high, and it will hold 24 tons of feed.

## QUARANTINE IS MORE EXTENDED

FOUR MORE STATES AND CANADA CANNOT SHIP CATTLE UNTIL THE FOOT AND MOUTH DISEASE ABATES

United Press Service  
 WASHINGTON, D. C., Nov. 10.—The Department of Agriculture has decided to quarantine Canada, Rhode Island, New Jersey, Kentucky and Delaware in its work of eradicating the foot and mouth disease. Shipments of cattle into the United States is thus prevented.

A fresh outbreak was discovered at Wilmington, Delaware. Today Kentucky was quarantined after discovery of infection in Bullitt county.

The action of today makes a total of fourteen states under surveillance by the federal authorities.

United Press Service  
 CHICAGO, Nov. 10.—A trainload of dressed beef arrived last night from Kansas City. Local packers asserted that other trainloads are on the way here to relieve the shortage.

Wholesalers deny any raise in price by them. They say the retail price increases are unwarranted.

## OPPOSE GOMPERS IN CONVENTION

MINERS AND CARPENTERS LEAD IN MOVEMENT FOR A MORE RADICAL METHOD OF CONDUCTING FEDERATION

PHILADELPHIA, Nov. 10.—For the first time in years, the rule of Samuel Gompers in the American Federation of Labor is seriously threatened. The delegates of the mine workers, carpenters and other unions inclined to radicalism, openly assert that the present control of the Federation is too conservative.

It is expected, however, that Gompers will be able to retain his power.

## ANKENY DITCH MATTER NEXT

COUNCIL MAY ALSO PUT ON THE BALLOT OTHER CHARTER AMENDMENTS WHEN SPECIAL ELECTION IS HELD

In addition to opening bids on street improvements, the council, at its meeting Thursday night will consider the election soon to be held, when the question of empowering the council to enter into an agreement with the government for the transfer or abatement of the Ankeny canal will be submitted to the people in the form of a ballot amendment.

At this same meeting the council will also consider some changes in the charter. These are a few of the provisions which would be more beneficial or practical in another form, and any alterations suggested are the result of two years' operation under the charter.

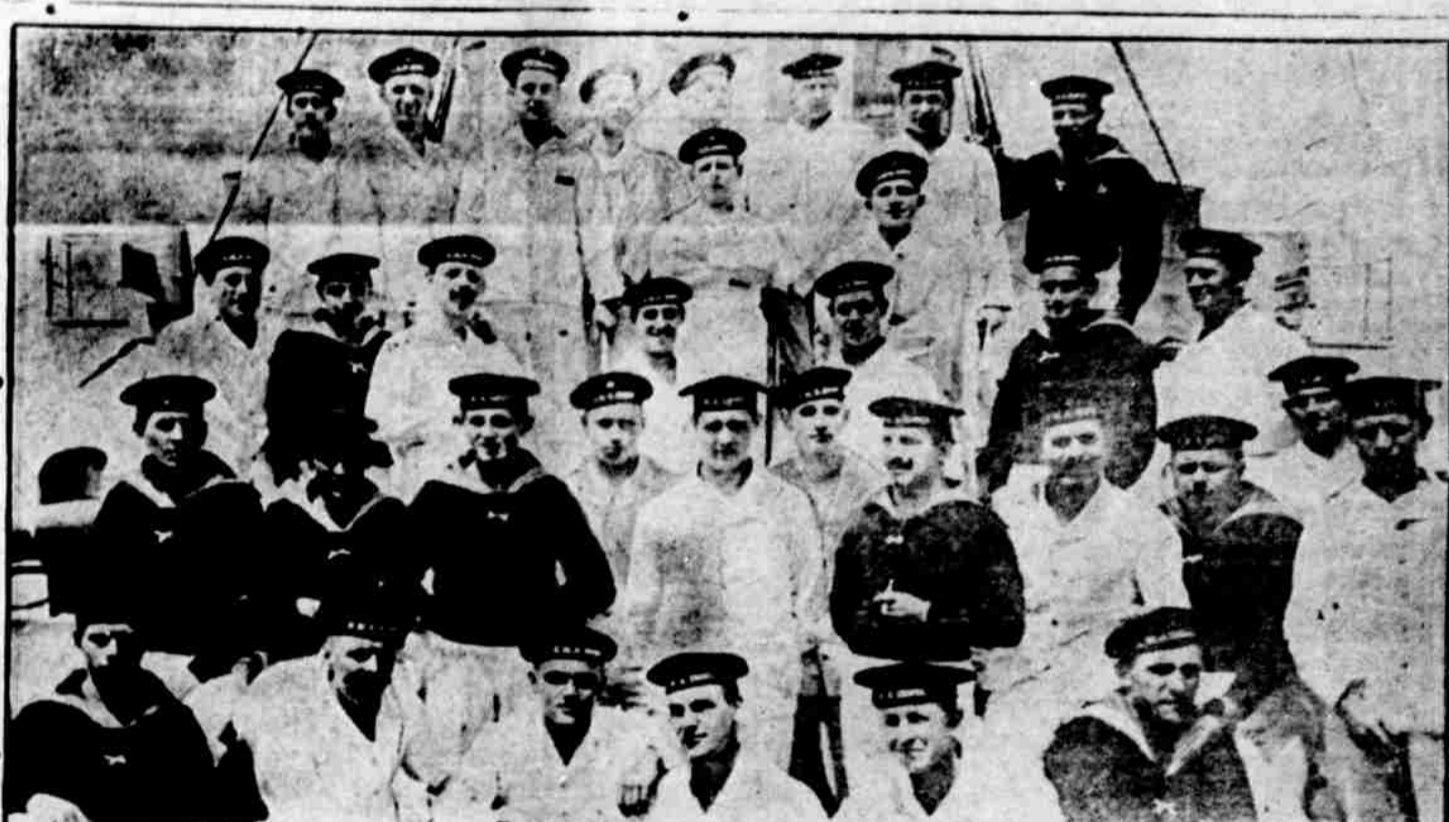
## WANT U. S. TO RUN THE MINES

United Press Service  
 PHILADELPHIA, Nov. 10.—The miners delegates announced today that they intend to press the resolution demanding that the government operate the Colorado mines. They take for their precedent the government railroad in Alaska. Most of the delegates approve of the resolution, and it is expected that favorable action will be taken.

# CRUISER "EMDEN" BURNED

## German Ship Destroyed After Causing Heavy Marine Losses

FIRST PHOTOGRAPH OF THE "TERROR OF THE PACIFIC" AND THE MEMBERS OF HER CREW



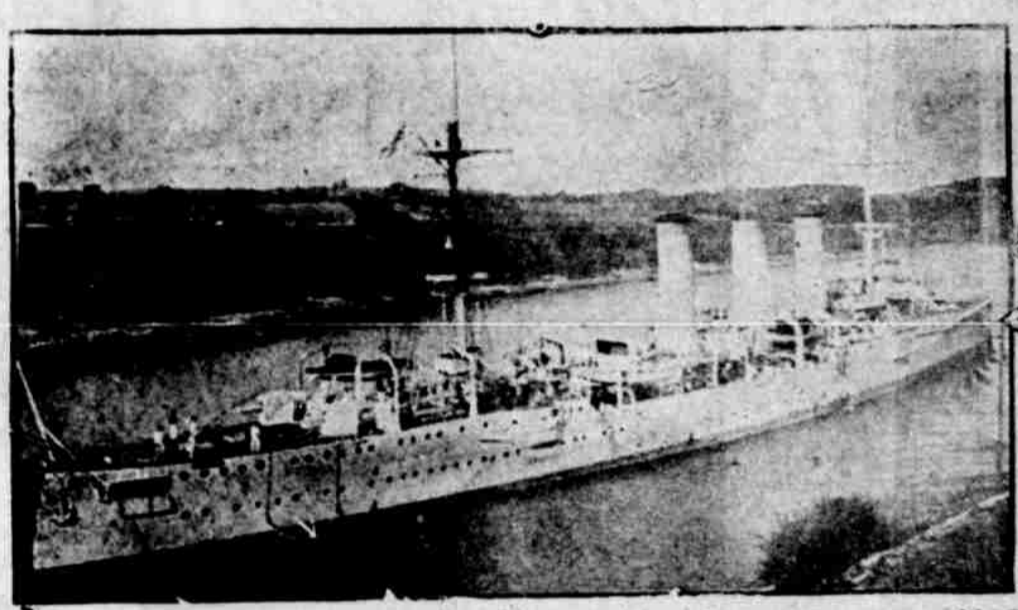
United Press Service  
 London, Nov. 10.—The admiralty today announced that the German cruiser Emden, the "Terror of the Pacific," has been destroyed.

The British warship Sydney drove the German ashore on Cocos Island in the Indian Ocean. The vessel was bombarded heavily, and after striking the rocks burned to the waters edge.

Unofficial advices say that Captain von Muller and the majority of the crew of the Emden were saved.

It is estimated that this one German warship caused a loss of \$10,000,000 to the allied powers. This is only the figure for the destruction and capture of vessels, and does not include the enormous loss of trade as a result of its operations in the Far East.

So far as is known, twenty-four vessels were either sunk or driven ashore by the Emden. Besides its activities on the high seas, the Emden was wont



to steam into harbors of island possessions of the allies and bombard the forts.

Bombay recently reported that the presence of the Emden in eastern waters had completely destroyed maritime trade.

One of the most recent feats of the Emden was to disguise herself with a fourth smokestack, steam into the British port of Penang, in the Straits Settlements. There the Emden attacked and sank a French torpedo boat destroyer and the Russian war ship Jemachung.

## FOOT AND MOUTH ATTACKS HUMANS

OHIO GIRL IS FOUND TO BE SUFFERING WITH ALL THE SYMPTOMS OF RAPIDLY SPREADING MALADY

United Press Service  
 AKRON, Ohio, Nov. 10.—The first suspected case of foot and mouth disease among humans was discovered today at the Bowen school in this city.

The city medical examiner, in his regular inspection, this morning discovered a girl 10 years old who is suffering with all of the symptoms displayed by animals afflicted with this malady.

The cause of the case cannot be learned. One theory is that the girl has been infected through eating the meat of a diseased animal. It is more possible that in this case the whole family would be diseased, and they have been isolated and will be carefully watched.

The Stanley-Smith Lumber company has twenty-five men at work in its new mill at Green Point, Hood River county.

## THE MAN OF THE HOUSE

Sometimes "the man of the house" is a woman.

And a lucky thing it is for the husband, the provider, the income getter, if his wife is, to speak figuratively and in the best sense, "the man of the house."

In the partnership of husband and wife the man is usually the one who makes the money; the woman the one who spends it.

That is, the woman is the one who is responsible for the week-in, week-out necessities for the up-keep of the home.

To these "men of the house" we earnestly recommend the advertising columns of The Herald.

They offer unlimited suggestions for improving the welfare of the home in every department from the kitchen to the drawing room.

No conscientious manager of a household should neglect the advertisements. They are the guideposts to education, economy, efficiency and happiness.

It pays to shop in The Herald before you shop in the stores; 91 per cent of the circulation of this paper goes direct into the homes.

Deal with the merchants who are advertising upon the Mutual Girl Page.

## BARBER SHOPS CLOSE EARLIER

NEW CLOSING HOURS ARE AGREED UPON BY ALL SHOPS, AND THE TONSORIAL ARTISTS ARE AGAIN HAPPY

Instead of "shaves at all hours," as has been the case in the past, the Klamath Falls barber shops are all to close at the same time. After November 16th, all of the shops will be open from 8 a. m. to 7:30 p. m., except Saturday nights, when they will close at 11 o'clock.

There has been some war among the barber shops for the past two years, and as a result the shops have been kept open all hours of the night, greatly inconveniencing the hat-cutters.

Here for a Visit.

Mrs. Herbert McLoughlin is here from Sacramento, the guest of Mrs. Joseph S. Keat.

The voters at the recent election had one purpose—to kill any and all laws which tend to retard the growth and development of business enterprises.

## FIGHT TO DEATH ACROSS MOJAVE

PASSENGERS SPEEDING ACROSS SOUTHERN DESERT IS SCENE OF DESPERATE DUEL BETWEEN PULLMAN EMPLOYEES

United Press Service  
 BARSTOW, Calif., Nov. 10.—A desperate duel was fought in a dimly lighted Pullman coach swinging across the Mojave desert early this morning when Pullman Conductor J. B. Fincher shot and killed Samuel Wilson, a dining car porter. Wilson was armed with a meat cleaver.

According to Fincher, who surrendered to the police at Mojave, he and Wilson quarreled over a tip given to Wilson. The latter rushed to the dining galley and returned with a meat cleaver, attacking Fincher.

Masten's a Daddy.

"Why all this joyfulness on the part of Bill Masten, repairer of watches and purveyor of jewels?" some one asks. The "why" arrived this morning in the form of a ten-pound son.

Hood River is erecting an apple evaporating plant.

## RUSSIANS AND GERMANS HAVE MANY BATTLES

United Press Service  
 PETROGRAD, Nov. 10.—The war office says the Germans have been driven out of all Russian territory, and the Russians are in Posen and East Prussia.

Heavy snows are falling in the north, but the Russians are using their motor sledges and making good time. Cossacks are reported to have pierced the German left flank at Konin.

It is officially announced that 600,000 Russian infantry, cavalry and light artillery are continuing their advance against the Turks.

United Press Service  
 BERLIN, (via Amsterdam), Nov. 10.—Official announcement is made that the Russian troops endeavoring to cross the border south of Wilhelm were repelled across the frontier with heavy loss.

## KLAMATH HIGH LOSES AGAIN

MEDFORD AND ASHLAND HIGH SCHOOL TRIUMPH OVER THE GRIDIRON WARRIORS FROM THE LOCAL INSTITUTION

The Klamath County High School football team returns tonight from their Rogue River Valley tour with a percentage of .000. Following the 71 to 0 defeat at Ashland Saturday, the team Monday lost to Medford High 53 to 0.

Telephone advices from the boys say that the team in Ashland suits was a far bigger and a faster one than played here recently. The locals were badly outwitted, and had an uphill fight all the time.

## BUILDING PERMIT IS TURNED DOWN

HOLDING THAT CORRUGATED IRON WAREHOUSE IS NOT A FIREPROOF STRUCTURE, COUNCIL REJECTS AN APPLICATION

The council last night rejected an application from L. Jacobs to erect a corrugated iron warehouse, with a wood frame, in the rear of the Ashland Fruit Store. The council held that under the charter this could not be called a fireproof structure.

The matter was up at the meeting November 2d, and was investigated during the week by the street committee.

## GIVE LECTURES IN THE CHURCH

PASTOR OF CHRISTIAN CHURCH IS ARRANGING FOR THE INSTALLATION OF A STEREOPTICON FOR ILLUSTRATING TALKS

A series of lectures on religious, educational, economical and sociological matters is to be given during the winter at the Christian church by Elder S. D. Harlan and others. These will be illustrated by stereopticon slides.

Elder Harlan has ordered a projecting lantern to throw these pictures on the screen, and he will also arrange to receive sets of illustrations for various lectures.