

THEATRE GUIDE

Houston's OPERA HOUSE

DARK

TEMPLE THEATRE

"Kathleen Mavourneen,"
Edison Drama
"The \$30,000 Curt,"
Kalem Drama
"The Birthday Gift,"
Vitagraph Comedy
"The Ex-Convict,"
Selig Drama

MATINEE DAILY AT 2:30
ALL LICENSED PICTURES

STAR THEATRE

Music Movies and
Vaudeville
PROGRAM TONIGHT

"The Lesson,"
American Drama
"A Dollar Did It," "Murphy's I O U,"
Keystone Comedy Split Reel
"The Climax,"
Solax Drama
"The Patriot,"
Tanhouser Comedy
No Vaudeville. ADMISSION 10c
STAR THEATRE ORCHESTRA

Pure Upper Lake

ICE

Delivered anywhere
in the city

A. P. HUTCHINS
Phone 279 W

Grocery Buying

Grocery buying should have careful attention. It's easy to make a mistake. We believe better groceries are the cheaper groceries. Careful buyers also know this. Grocery buying is your business and

Grocery Selling

is our business. We sell only "better" groceries, and we sell them for the least money possible.

Van Riper Bros.
Phone 85

New City LAUNDRY

Japanese hand work
Good and prompt work guaranteed

Will be
OPEN MON. APR. 21
125 Fourth St. Phone 1-4

THE EVENING HERALD

W. O. SMITH, Editor
Published daily except Sunday by the Herald Publishing Company of Klamath Falls, at 115 Fourth St.

Entered at the postoffice at Klamath Falls, Oregon, for transmission through the mails as second-class matter.

Subscription terms by mail to any address in the United States:
One year \$5.00
One month50

KLAMATH FALLS, OREGON
FRIDAY, MAY 9, 1918

Date	Max.	Min.	Weather
1.....	48	26	Clear
2.....	59	26	Clear
3.....	61	35	Clear
4.....	69	32	Clear
5.....	71	42	Clear
6.....	77	40	Clear
7.....	75	45	Clear
8.....	67	40	Pt. Cl'dy

REAL ESTATE TRANSFERS
The following realty transfers, recently filed with the county clerk, are furnished by the City and County Abstract company:

Peter Degen to Paul Rooster, warranty deed, \$10, W 1/4 NW 1/4, Sec. 24-40-9.
W. P. Rhoads to S. M. Mann, quit claim deed, \$10, E 1/4 SW 1/4 SE 1/4 NW 1/4, SW 1/4 SE 1/4, Sec. 9-41-12.
The Klamath Development company to Robt. S. Campbell, warranty deed, \$10, lots 9, 10, 11 and 12, block 30; lots 1, 2, 11, 12, 13, 14 and 15, block 31, Hot Springs addition.
The Klamath Development company to Robt. S. Campbell, warranty deed, \$10, lots 5, 6, 22, 23 and 24, block 32, Hot Springs addition.
J. S. McClellan to A. A. Bellman, warranty deed, \$10, W 1/4 SW 1/4, SE 1/4 SW 1/4, Sec. 24-40-10.

Albert Johns to United States, deed \$1, part SW 1/4 SW 1/4, SE 1/4 SW 1/4, Sec. 14-29-9; NE 1/4 NW 1/4, Sec. 22-29-9.

Roy Barkhurst to Lena E. Barkhurst, warranty deed, \$10, lots 2 and 4, block 5, First addition.

The Klamath Development company to S. B. Johnson Co., warranty deed, \$10, lots 40A, 40B, block 6; lots 7 and 8, block 9; lots 2A, 1B and 2B, block 7, Railroad addition.

The Klamath Development company to Charles Murphy, warranty deed, \$10, lot 7, block 43, Lakeview addition.

D. O. Stevenson to Chas. C. Meyers, warranty deed, \$10, lots 4 and 5, in block 6, Opportunity addition.

C. C. Low to Arthur Ariet, deed, \$1,390, lots 6 and 7, Sec. 10; SW 1/4 W 1/4 SE 1/4, Sec. 11; SE 1/4 Sec. 12-40-8; lots 2, 4, 5 and 6, Sec. 5; SW 1/4 W 1/4 SE 1/4, SE 1/4 SE 1/4, and lot 13, Sec. 7-40-9.

Wm. S. Worden to M. M. Cain, warranty deed, \$10, lot 18, block 2, Worden.

Altamont Investment company to Geo. D. Emery, deed, \$3,000, lots 9, 10 and 11, Altamont tracts.

A. Y. Lindsey to Marian M. George, warranty deed, \$5, lots 2, 3, 4, 5 and 6, block 2, Opportunity addition.

G. W. Leslie to W. B. Bradford, warranty deed, \$10, lot 792, block 105, Mills addition.

The Klamath Development company to Blanche Geddes, warranty deed, \$10, lot 15C, block 5, Railroad addition.

J. S. McClellan to S. B. Evans, warranty deed, \$10, lot 5, block 4, Fairview addition.

There are two kinds of insurance. Chilcote writes the kind that pays. New location, 625 Main st., phone 66.

MONUMENTS

We have just received from the East a carload of marble monuments, all new designs.

We also manufacture monuments to order

Baro Island Monumental and Stone Co.
418 Broadway St.

HATCHING EGGS

Hatched Plymouth Rocks, \$1.00 per 15
Single Comb White Leghorns, \$1.00 per 15
KIMBER L. FRENCH

OF INTEREST TO WOMEN

By MARGARET MASON

(Written for the United Press)
NEW YORK, May 9.—Sing ho for the rapturous wraps. Only rhapsodies can describe them. You needn't go around wrapped in thought any longer. There is a diversity in the wrap crop this season to suit the most fickle fancy. There are long wraps, short wraps, wraps like a shawl; loose wraps, tight wraps, any kind at all.

If you long for a long one, a three-quarter model in brocaded faille silk or mate-lasse with Mandarin sleeves and collar of embroidered chiffon is decidedly smart for daytime wear in gray, taupe or black. It is equally charming for evening developed in some bright shade of Nell rose, Nattier blue or canary. It is open low in front and fastens well down on the left side with a fancy ornament of corded silk. Another graceful long wrap in gray chiffon moire is gathered onto a broad band of old silver lace just above the knees with a decidedly bouffant effect. Buxom beauties may rap this wrap, but slender sirens are all wrapped up in it.

One of the most adorable artistic models is built on exactly the same lines as the old fashioned dolman. In soft violet charmeuse with shirred bandings of the same material outlining the neck, sleeves and lower edge, violet tassels dangling from the middle of the back and each sleeve, it is the quintessence of quaintness. The lining is of old blue chiffon. Verily the mantle of grandmama has descended upon your grateful shoulders.

It is the abbreviated jacket wrap, however, that most enraptures you these days. Love me little, love me long could never be said of these cunning coatees, for the shorter they are the more you adore 'em. Eton jackets in black moire, bengaline or charmeuse are short but sweet, and kimona blouse jackets with a sort of directoire coat tail effect hanging well below the hips in the rear are stunning in vivid futurist silks when worn with a one-toned skirt. Some of the little flowered silk jackets are

so very brief indeed that they resemble yokes with a fitted ruffle attached graduated from the front until it makes a postillion back half way below the hip line.

Saucy little bouffant coatees of brocade or chiffon barely reaching to the hips are generous in color if not in length, and square tailored cutaway coats of black broadcloth, watered bengaline or taffeta are manly and modish all at the same time. Worn with a vest of white pique buttoned in smoked pearl, these cutaway coats are masculine enough to fire the fancy of the most incendiary of suffragettes.

Quite fitting accompaniment of the collarless blouse, crownless hat and corsetless figure is the sleeveless coat. Long draped wraps as well as shorter Russian blouse coats and Norfolk jackets are shown innocent of sleeves. Now is some fashion expert would only follow up the sequence with a coatless gown!—But alas, they are already priceless.

Of course, you want to be smartly top-coated when you "motor with water." For the severe tailor maid, loose mannish overcoats of Scotch tweed and homespun have the drop armholes and outside pockets. They button straight from the top to toe. The dull toned mixtures of these materials, while not dust-defying, are at least dust-concealing. For the more aesthetic feminine motor maid, a long loose coat of monotoned ratine colored and cuffed in moire, is fastened diagonally with buttons of pearl, clay, putty or ash collar it is as serviceable as a dustless duster.

Bright colored coats of ratine belted in the back are also good, but more prone to show the soil of speeding.

Compact little hat cases come packed with miniature boxes of cold cream, rouge and powder and a vial of refreshing violet salts. They are just the right size to slip into your motor coat pocket and repair all ravages of a gritty, dusty countenance. With one of these first aids to dusty

beauties, you need never look like a coal-heaver's bride, but instead emerge sanitarily sweet from your motor togs for the denizens at the wayside inn, no matter how madly you've motored.

Hotel Arrivals

White Pelican
H. W. Hiencke, Chilcoquin; Alfred Meyer, Berkeley; J. M. Kemp, Grants Pass; E. F. Carleton, Salem; E. A. Wettig, Sacramento; T. B. Whipple, Portland; J. E. Light, Sacramento; E. Judell, San Francisco; Wm. Mc-Masters, Portland; J. M. Campbell, Dunsmuir.

Hotel Hall

J. M. Keown, Red Bluff; J. S. Orr, Reno, Nev.; H. H. Gillette and wife, Ashland; L. W. Moffett, Burley, Idaho; Mrs. Minnie W. Aydelotte, Oakland; H. J. Sieberts, Portland; Chas. L. Corey, city; D. M. McLa-more, city; Mr. and Mrs. Woods, Bend; H. T. Bruce, Portland; W. C. Harding, Portland; R. J. Furbeck, Portland; L. Jacobs, Portland; L. C. Sizemore, Fort Klamath.

WOOD

Dry Slab Wood, 16-inch . . . \$2.50
Dry Fir Slab, 16-inch . . . \$4.00
16-inch Body Wood . . . \$6.50
16-inch green Pine Slab . . . \$2.75
16-inch green Fir Slab . . . \$2.00
KLAMATH FUEL CO.,
O. Peyton, Manager
Office, 1180 Pine. Phone 2488

ICE CREAM

Our Fountain does not close, winter or summer. A dish of ice cream will taste as good now as in hot weather.

SPECIAL—
An extra fine bitter-sweet Chocolate at 75c the pound.

The Shasta
130 Main St.
Makers of Pure Candy

Two Model Mothers of St. Louis and their Children as Exhibits



Mrs. Scott Parsons and Daughter
Mrs. Anna McClain Sankey and Daughter

Mrs. Anna McClain Sankey and her daughter Virginia, aged 5 years, and Mrs. Scott Parsons with her daughter Jane, aged 7, of St. Louis are now in Washington as exhibits before the commissioner of education as model mothers and children. They have been trained in a school established in St. Louis by Mrs. Fannie F. Hughey.

The latter has worked out a new plan for the education children which she insists surpasses the method of Dr. Montessori in Italy. Mrs. Hughey says the early training of the young children should begin with playing with dolls.

Something Really Interesting

FOR THE RANCH BUYER

169 acres unimproved land, 13 miles from Klamath Falls, on county road. Big spring that never goes dry.

Price \$16 per acre

Terms

One of the best farm and stock ranches in Klamath county; beautifully located, facing on the Lower Klamath Lake; 7 miles from Merrill, 6 miles from Midland; 70 acres in crop; heavy loam soil and a snap at

\$3500, Terms

J. F. MAGUIRE

431 Main Street



LAY OUT ALL YOUR BILLS

and figure out how much you could make if you discounted them. More than the usual rate of interest by a good deal. If you were a depositor of this bank you would be in a position to apply for a loan of the cash to discount your bills. Think it over.

First Trust and Savings Bank
Klamath Falls, Oregon

Spring is the Season



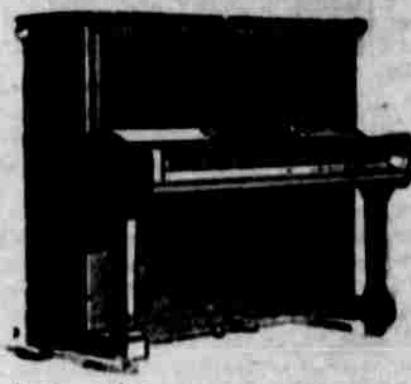
To install a new and model bathroom in your home, so you will have the luxury of bathing during the warm months. A bathroom at any time is both a luxury and a necessity, as the health of your family depends upon cleanliness. Get an estimate from us right away and you will have scientific and prompt work from

J. H. GREELLY

Don J. Zumwalt, President E. M. Hubb, Vice-Pres. and Treas.
Ibert S. Whitrow, Secretary

Surveyors and Irrigation Engineers
KLAMATH COUNTY ABSTRACT CO.
ABSTRACTING

Maps, Plans, Blueprints, Etc. KLAMATH FALLS, OREGON



KLAMATH FALLS MUSIC HOUSE

Sole Representative of Sherman Clay & Co.'s Pianos, the Steinway and other leading Pianos. Other makes at moderate prices. Tuning and Repairs. Agency for Singer and White Sewing Machines, Oliver Typewriters, Victor and Edison Records and Machines. Books, Stationery and Pictures.
R. MADSEN, Proprietor
719 Main St.

Just now, Edison 4-minute Nov. recs, 21c; 2-minute Records, 15c.

Headquarters for BLUESTONE and FORMALDEHYDE

Full Strength
Lowest Prices

UNDERWOOD'S Corner Main and 7th

PROMPT SERVICE—REASONABLE PRICES

W. O. SMITH PRINTING CO.

BETWEEN MAIN AND KLAMATH FOURTH ST.