

Amusements

The Temple Theatre

"Football Days at Cornell,"
Sensational Descriptive

"The Scoop,"
Vitagraph Comedy

"The New York Hat,"
Biograph Comedy

"Maid of Red Evans,"
Selig Drama

MATINEE DAILY AT 2:30

ALL LICENSED PICTURES

Marshmallows

Soft and fluffy, and strictly pure. If you are a marshmallow eater, here is a chance to satisfy your appetite on the best there is, at 40 cents per pound.

The Sheeta

400 Main St.
Makers of Pure Candy

FISHING TACKLE

We have everything you need for that fishing trip: Hook, line, rods, reels, lures, etc. We rent tents, guns and camping outfits.

THE GUN STORE

J. H. WAMBERG
Phone 292 Cor. 6 and Main

Wood Wood

Green Slab Wood
16 inch

Black Wood, \$3.50 per load

Dry Slab Wood
16 inch and 4 foot

Limb, Body Wood
4 ft., 16 in. and 12 in.

Leave orders at
O.K. Transfer Co.

Phone 57 Cor. 6 and Main

P. C. Carlson

Resolved

that I will begin the

New Year

by getting high
quality

Groceries

for 1913 at

Van Riper Bros.
Phone 851

LIVERY

Drive with or without
car drivers
Best Equine Service
Clean and slight

W. L. LARSEN
Phone 127

THE EVENING HERALD

W. O. SMITH, Editor

Published daily except Sunday by the
Herald Publishing Company of
Klamath Falls, at 115 Fourth St.

Entered at the postoffice at Klamath
Falls, Oregon, for transmission
through the mails as second-class
matter

Subscription terms by mail to any ad-
dress in the United States:
One year \$5.00
One month50

KLAMATH FALLS, OREGON
TUESDAY, JAN. 28, 1913

January	Weather	Conditions
1 35	Clear
2 36	Clear
3 43	Clear
4 33	Clear
5 18	Clear
6 18	Clear
7 20	Snow
8 29	Part Cloudy
9 23	Snow
10 24	Snow
11 25	Snow
12 26	Snow
13 26	Snow
14 25	Snow
15 25	Clear
16 23	Snow
17 23	Snow
18 26	Snow
19 29	Snow
20 24	Clear
21 16	Clear
22 23	Snow
23 23	Clear
24 21	Clear
25 22	Part Cloudy
26 25	Clear
27 25	Foggy
28 23	Foggy

SNOW ENDANGERS SHEEP ON DESERT

LAKE COUNTY SHEEP RAISERS
WARRIORS THAT FEEDING ON
THE RANGE NOW IS AN ABSO-
LUTE NECESSITY

The storms of the past week have caused more or less uneasiness among sheep men, says the Lakeview Examiner, it being reported that snow has fallen in many places on the desert from six to eighteen inches in depth. One of E. B. Chandler's camp tenders a few days ago came in from the camp near Juniper mountain and reported conditions as very serious, and Mr. Chandler at once made preparations toward bringing his sheep to his Abert Lake ranch, where he has a large amount of hay. If the snow is as deep as reported it will be necessary to break a trail and haul feed to the sheep while on the way to the ranch. Mr. Chandler has a large amount of hauled hay for just such an emergency, and it will be hauled out to the sheep.

Other sheep men are not so fortunately situated as is Mr. Chandler, and it is feared that in some instances the loss will be quite heavy.

WOULD HELP WAR PARTNER

MILLIONAIRE GENERAL SAYS
HE WILL AID IN THE DEFENSE
OF GENERAL SIKELIS IF HE IS
ASKED

United Press Service
OMAHA, Neb., Jan. 26.—General
Granville Dodge, a civil war hero and
a millionaire, declared today that he
will aid General Sikelis in his de-
fense if he is asked.

WOOD

Dry Slab Wood, 16-inch... \$5.00
Dry Fir Slab, 16-inch... \$4.00
16-inch Body Wood... \$4.00
16-inch Limb Wood... \$4.00
Box Factory Block, load... \$4.00
G. FRYTON,
Office, 1150 Pine Phone 2488

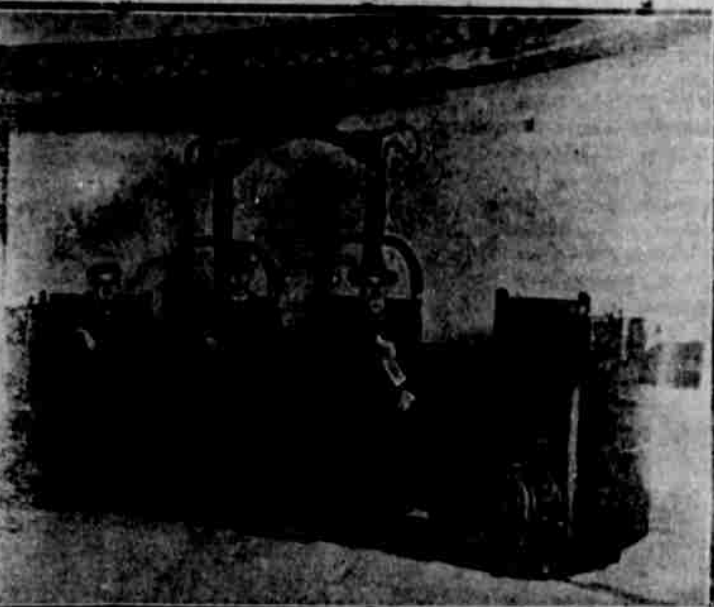
POLK'S
GERRISON and WASHINGTON
Business Directory
A Directory of each City, Town and
Village giving descriptive details of
each place, including population, tele-
graph, shipping and banking points;
also Classified Directory, compiled by
business and profession.
Vol. L. POLK & CO., SEATTLE

Ellis Island Moves North to Receive Uranium's Passengers



Figuratively, Ellis Island was moved north to the Grand Central Station when the third-class passengers from the stranded steamship Uranium arrived in New York City recently. The huge terminal was transformed for a few hours into a confused and noisy immigrant station. Special trains brought the prospective American citizens to New York, where the examinations were made as brief and as speedy as possible. Of the 850 passengers aboard the Uranium when that vessel ran on a reef in Shoal Cove, near Halifax, more than half the number were receiving their first impressions of the country which was to be their home. So little confusion and excitement attended the grounding of the ship that most of the immigrants believed that they were being landed in the usual way. The photograph shows a group of the new arrivals taking their first view of Forty-second street.

Most Exclusive Railway System in World



This little car, which runs on one rail, carries twelve senators at a time, from their offices to the United States Capitol, through an underground passage. It takes the place of the old buses, which formerly did the same work, and is the only monorail system in the country with one exception. The original plans called for the same system in the tunnel from the house office building to the Capitol, but this part of the project has been held up temporarily. Seated in the car enjoying their first ride are Senator John Sharp Williams of Mississippi (front) and Senator Claude Swanson of Virginia. The operator sits on a little seat in the rear of the car.

REAL ESTATE TRANSFERS

The following realty transfers, contracts, deeds, mortgages, etc., recently filed with the county clerk, are furnished by the City and County Abstract company:

Agnes H. Ekelsion to Melvin H. Ekelsion, warranty deed, \$18, lot 2, block 3, Fairview No. 2.

The Klamath Development company to W. H. Stewart, warranty deed, \$10, lots 6 and 7, block 11, Railroad addition.

Richard E. Smith to Henry Sellon, warranty deed, \$10, W 1/2 of SE 1/4 of NW 1/4, Sec. 26-35-9.

Ella Lutke to Wm. Lutke, warranty deed, \$10, lots 1, 2 and 3, block 53, Nichols addition.

William Irwin, a well known Langell Valley farmer, and one of the directors of the Horsefly Irrigation district, left this morning for the Eastern states to attend to business matters. He is a brother of District Attorney John Irwin.

CLOGGED NOSTRILS OPEN AT ONCE, HEAD COLDS AND CATARRH VANISH

In One Minute Your Stuffy Nose and Head Clear, Sneezing and Nose Running Cease, Dull Head-ache Goes.

Try "Ely's Cream Balm." Get a small bottle anyway, just to try it—Apply a little in the nostrils and instantly your clogged nose and stopped-up air passages of the head will open; you will breathe freely; dullness and headache disappear. By morning the catarrh, cold in head or catarrhal sore throat will be gone.

And such misery now! Get the small bottle of "Ely's Cream Balm" at any drug store. This sweet, fragrant balm dissolves by the heat of the nostrils; penetrates and heals the inflamed, swollen membrane which lines the nose, head and throat; clears the air passages; stops nasty discharges and a feeling of cleansing, soothing relief comes immediately.

Don't lay awake tonight struggling for breath, with head stuffed; nostrils closed, hawking and blowing. Catarrh or a cold, with it's running nose, foul mucous dropping into the throat, and raw dryness is distressing, but truly needless.

Put your faith—just once—in "Ely's Cream Balm" and your cold or catarrh will surely disappear.

Severe Cold? Go To Your Doctor
You could not please us better than to ask your doctor about Ely's Cherry Pectoral for coughs, colds, croup, bronchitis. Thousands of families always keep it in the house. The approval of their physician and the experience of many years have given them great confidence in this cough medicine.

ANCIENT CITY NEAR JERUSALEM UNearthED

JERUSALEM, Jan. 28.—Messrs. Meckenzie and McAllister, working under the auspices of the Palestine Exploration fund, have unearthed the ancient city of Bethshemesh, about thirty miles from Jerusalem, which was the city of the tribe of Judah, and allotted to the priests.

Bethshemesh figured in early Jewish history in connection with the calamity that befel its inhabitants on account of their irreverent handling of the ark, an account of which may be read in chapter 6 of the First Book of Samuel, verses 1 to 19.

Miss Fannie Virgil has returned from Olene, where she has been the guest of Mrs. Frank Corpening.

Assurance of Accuracy

The first consideration in selecting a watch is to get a reliable time keeper. It makes no difference how little you spend for a watch if it is money wasted unless you can depend on it to keep somewhere near accurate time.

In the manufacture of a watch one of the chief expenses is the final adjusting and regulating. There are, however, inexpensive watches of real merit. These are constructed along simple lines, and are dependable time keepers. Other cheap watches gotten up in a showy way are not worth carrying.

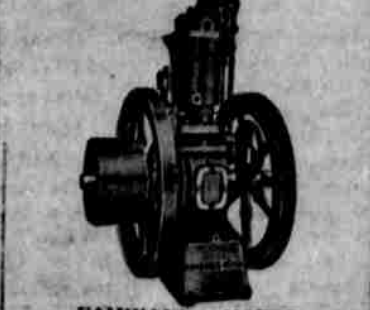
We have learned by years of experience to distinguish between the good and poor makes, and we will not sell a watch at any price that we cannot guarantee to be an accurate timepiece.

Yours for service,
FRANK M. UPP
Watchmaker, Jeweler and Engraver.
R. P. Watch Inspector
W.H.H. Building

Alex Martin
President

Chas. S. Moore
Vice President

4 Per Cent Interest Paid on Certificates of Deposit



FAIRBANKS, MORSE Oil Engines

for
Simplicity, accessibility, safety, durability and economy. Burning heavy oil, two-thirds lower in cost than gasoline.

Before making a purchase we invite you to call and see our Engines on display.

WE SAVE YOU MONEY

SPERRY BROS.
1019 Main St., Opposite Tenth
KLAMATH FALLS

I SOLICIT YOUR FIRE INSURANCE, BONDING BUSINESS, PLATE GLASS INSURANCE, AUTOMOBILE INSURANCE

ELMER L. FRENCH

There are Other Kinds

But there is only one BEST
Be sure you get
Ehrmann's
Pure California Oil
Absolutely Guaranteed

WARD & OBENCHAIN



KLAMATH FALLS
MUSIC HOUSE
Sole Representative of Sherman Clay & Co.'s Pianos, the Steinway and other leading makes. Other makes at moderate prices. Tuning and Repairing Agency for Singer and White Sewing Machines, Oliver Typewriters, Victor and Edison Records and Machines. Books, Stationery and Pictures.
H. MADSEN, Proprietor
718 Main St.

Just now, Edison 4-minute Records, 21c; 5-minute Records, 25c.

AN ALCOHOL HEATER FOR 65 cents

Thoroughly safe. Strong enough to hold a large kettle of water, yet small enough to go in a traveling kit. Just the thing for the sick room. In fact very desirable when hot water is needed in a short time

WILLIAM C. HURN HARDWARE

The Attractive Bank Account
When you start an account you will be pleased to find what a convenience it is to have a safe place for your money, and know that you get at it in case you need it once. It beats any other method of disposition of your funds.

First Trust and Savings Bank Klamath Falls, Oregon

First National Bank
Klamath Falls, Oregon
CAPITAL \$100,000.00

Leslie Rogers
Cashier

A. R. Campbell
Asst. Cashier

DON'T COUGH

Send to Underwood's and get a bottle of NYAL'S White Pine and Tar
It will relieve the irritation, soothe your throat and stop the Cough. Get a bottle and sleep well tonight. Large Bottles 50c

UNDERWOOD'S
Corner Main and Seventh