

MARSH LANDS OREGON'S RICHEST SOIL ABEL ADY PHONE --- 303
 50 PER CENT. VEGETABLE MATTER. KLAMATH'S GREATEST BARGAINS AT \$25 PER ACRE AND UPWARDS. EASY TERMS

THE EVENING HERALD

Issued Daily, Except Sunday, by the
HERALD PUBLISHING COMPANY
 W. O. SMITH, Editor

SUBSCRIPTION RATES

Daily, by mail, one year	\$5.00
Daily, by mail, six months	2.50
Daily, by mail, three months	1.25
Daily, by mail, one month	.50
Daily, delivered by carrier, one week	.15

KLAMATH FALLS, MNNDAY, DECEMBER 14, 1908.

**OVER EIGHT HUNDRED MIL-
 LION TO RUN GOVERNMENT.**

Appropriations aggregating \$824,408,948.01 will be required for various branches of the government service during the coming fiscal year, according to estimates of the departmental heads sent to Congress by the Secretary of the treasury.

The following is the apportionment:

Legislative, \$12,178,177.95; executive, \$415,510; state department, \$4,320,394.72; treasury department, \$190,896,645.11; war department, \$234,093,150.10; navy department, \$137,510,387.99; interior department, \$200,532,151.05; postoffice department, \$1,711,040; department of agriculture, \$18,817,626; department of commerce and labor, \$13,043,845; department of justice, \$9,890,020. Total, \$824,408,948.01.

The amount that was estimated for the current fiscal year was \$766,508,272.96, and the amount appropriated for this year at the last session of Congress was \$832,629,393.14.

Among the important individual items in the estimates for the coming fiscal year are: Increase of the navy, \$23,840,790; navy ordnance, \$7,020,405.79; coal and transportation for the navy, \$5,000,000; navy yards and stations, \$9,811,730; pensions, \$161,018,000; isthmian canal, \$35,886,190.58; fortifications and other works of defense, \$17,263,251; rivers and harbors, \$41,943,198.

The Northern Pacific and Great Northern railroads are jointly engaged in taking the kinks out of mountain travel. They expect to have this accomplished so far as they are concerned by the first of the year when trains will begin running over the Spokane, Portland, and Seattle railroad. The road is as nearly a straight line as it has been possible to make it. It has reduced the distance from Spokane to Portland to 423 miles. Short curves have been abolished and, in consequence, it is said that one locomotive will be able to pull as many coaches over the mountains as it is able to start on level ground. Of course, such a road costs money. Twenty miles of track between Pasco and Kahlottus represent the expenditure of \$5,000,000 or \$250,000 a mile. Along the bluffs overhanging the Snake river there is one mile that cost \$500,000. The surveying and building of this part of the line required the suspending of men over the cliffs with ropes. The railroad tracks are now laid where once these men hung in midair. We have reached the stage in railroad construction where nothing is impossible to our engineers, and the stage in competition where no expense is too great if it results in a saving of time to railroad passengers and of engines to the companies.

According to a statement issued by the crop reporting board of the agricultural department the newly seed-

ed area of winter wheat is estimated as being 5.6 per cent less than the revised estimated area sown in the fall of 1907—equivalent to a decrease of 1,762,000 acres, indicating a total of 29,884,000 acres. The condition of winter wheat on December 1 was 85.3 per cent, as compared with 91.1 on December 1, 1907; 94.1 on December 1, 1906, and a ten-year average of 92.2.

Nathan Straus, at a meeting of the Jews, a Jewish organization, last week, attacked the contention of Dr. Koch that tuberculosis can not be communicated to human beings by cows affected with the disease. Mr. Straus declared that he had written to Dr. Koch calling upon him to recede from the position he had taken, but that the German scientist had not replied.

THE READY-MADE HOUSES are warm in winter, cool in summer, substantial, attractive and sanitary, and at half the price it costs to build in the old way. See samples and plans at the office on Main street. Phone No. 811.

Ladies: We have just received a fine line of Steinberger & Kalisher Esky Kid Gloves. In black and colors. Stitts Dry Goods Co. 7-1wk

Largest line of cut glass. "Winters."

In buying Drugs, Chemicals and their official preparations, we buy only from the most reliable sources, insuring the Highest in Quality.

CHITWOOD DRUG CO.

Buy "His" Christmas Gifts at a Men's Store

Ladies are especially invited to visit our Store. Here you can find an abundance of good things that will please men folks

Men's Suits	\$10 to \$40	Boyer Hats	35c
Men's Overcoats	\$ 9 to \$30	Hole Proof Hosiery	50c
Boys' Suits	\$3 to \$13	Silk Underwear	50c
Boys' Overcoats	\$5 to \$12	Sweaters	\$1.00
Smoking Jackets	\$5 to \$10	Family Vests	50c
Pajamas	\$3 to \$5	Neckwear	50c
Dress Shirts	75c to \$3.50	Silk Suspenders	50c

The Portland Clothing and Shoe Store

AGENTS FOR HART, SHAFNER & MARK CLOTHING, W. L. DOUGLAS SHOES, AND HOLE PROOF HOSIERY.

Have you tried one of these Sun Eagle cigars at the Monarch? The best five-cent cigar on the market to

The American Hotel Dining Room is open all night. Fresh oysters every day.

HOTEL HOUSTON

RATES

Single Meals	35 cents
Meal Tickets, 21 Meals	\$5.00
Rooms - 25 and 50 cents per night	
Rooms - \$1.50 and \$2.00 per week	

J. A. HOUSTON, Proprietor

BALDWIN & BALDWIN

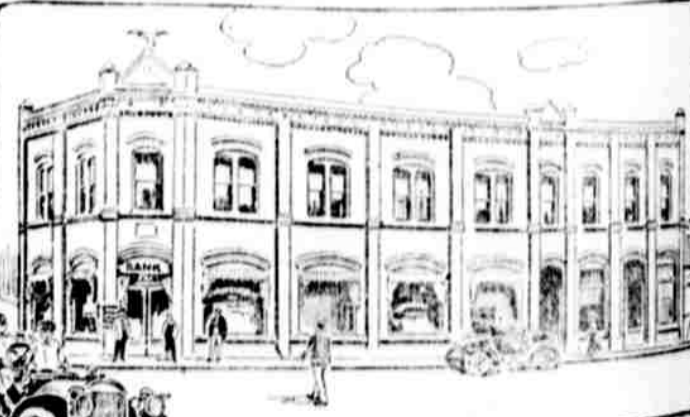
Not Brothers; Just Plumbers

PLUMBERS AND STEAM FITTERS
 CONTRACT WORK A SPECIALTY

Prices Reasonable and
 Work Guaranteed

CHAS. E. WORDEN President
 A. W. WORDEN Cashier
 EDWARD MELHASE Vice President

The American Bank and Trust Co.



CAPITAL, \$100,000.00

Cor. 5th and Main Street

DON'T BAKE

Let us do it for you. Everything Home Made. Prices Reasonable. BREAD A SPECIALTY. We put up box lunches; also lunches for hunting, fishing and picnic parties. A trial will convince you that it is cheaper to buy than to bake.

KLAMATH FALLS BAKERY AND DELICATESSEN

Get Our Bread at Cawkins.

Gifts That Will Please

Each and every article in our Holiday Stock was very carefully selected. Nothing was bought hap hazard. We believe in securing goods which will PLEASE.

To secure gifts that will please, just visit our store and see our large and varied stock. The stock is now complete; make early selections.



The ideal Xmas gift for him or her—a gift which will be used many times a day all the year for many years.
PARKER Lucky Curve Fountain Pen
 Many beautiful, artistic designs in special Xmas boxes. Prices from \$1.00 up. Be sure you get a Parker Lucky Curve.

FOR SALE BY
 THE DEALER WHOSE NAME APPEARS BELOW
STAR DRUG STORE

Stationery: All the newest things in beautiful gift boxes. Correct Stationery in factory gifts. Prices from 50c. to \$2.50.

Perfumes: An ideal gift for a lady is a nice gift package of her favorite perfume. We keep all the standard odors in beautifully decorated and artistic gift boxes.

Candies: Fresh for the Holidays from Nunnally's factory by express

Toilet Sets: We are particularly proud of the sets we are showing this year. In sets from three to ten pieces in beautifully decorated boxes.

Fine Brush Gifts: Many useful and beautiful presents can be chosen from our fine line of bristle goods.

BIG LINE OF COPYRIGHT NOVELS JUST RECEIVED

The above is only a small portion of our immense Xmas stock. By all means see these goods soon, while all lines are unbroken, fresh and dainty. Come and look. Tell your friends to come also.

STAR DRUG STORE

"The Christmas Emporium."

"They Have It."