

# MARSH LANDS OREGON'S RICHEST SOIL ABEL ADY PHONE 303

50 PER CENT. VEGETABLE MATTER. KLAMATH'S GREATEST BARGAINS AT \$25 PER ACRE AND UPWARDS. EASY TERMS

## THE EVENING HERALD

Issued Daily, Except Sunday, by the  
**HERALD PUBLISHING COMPANY**  
 W. O. SMITH, Editor

### SUBSCRIPTION RATES

Daily, by mail, one year	\$5.00
Daily, by mail, six months	2.50
Daily, by mail, three months	1.25
Daily, by mail, one month	.50
Daily, delivered by carrier, one week	15

KLAMATH FALLS, THURSDAY, OCTOBER 29, 1908.

## THE READY-MADE HOUSE CO. KLAMATH FALLS, OREGON

The Ready-Made House Company—Organized, and to be incorporated under the laws of the State of Oregon, with a capital stock of \$15,000, divided into 15,000 shares of the par value of \$1 per share, and to have its manufacturing plant and general office at Klamath Falls.

The object of this Company is the manufacturing and selling "Ready-Made Houses" for which it has the exclusive manufacturing and sales rights for the entire State of Oregon.

This is an up-to-date, 20th Century way of doing business. These houses are made in sections, framed and fitted and all material prepared in the factory, where the workmen have everything at hand, which means a saving of about one-half in the cost of a building. Only two to five days time required to set up a house complete and turn the keys over to the purchaser.

The patented construction—double panels, dead air space, two thicknesses of heavy paper, with 1/4 inch layer sterilized hair-insulator between the paper, making a building that is impervious to heat, cold, or moisture. The hair, before it is enclosed in the papers, is chemically treated, leaving a coating of lime, which makes the finished material absolutely vermin-proof and odorless. A perfect Sanitary building—cool in summer and warm in winter.

### GREAT DEMAND FOR BUILDINGS

With the coming of the Railroad and the settling up of the farm lands, there is a great demand for buildings, and as the cost is the interesting feature, it is not speculative to assume that these buildings will sell as fast as they can be manufactured. With the irrigation system now in operation, this country will be settled up very rapidly.

The new-comer buys a ranch, or a town-lot, and looks into the cost of building, and finds that he can buy a "Ready-Made House," with any number of rooms from 1 to 7—just as substantial and comfortable as the most modern buildings, and at about one-half the price it would cost, if he purchased the material and hired the labor. And, as a bonus, if he orders his house, will secure the house ready for occupancy the same week.

This locality is the GREATEST SUMMER RESORT, and the hunting and fishing will attract thousands of visitors each year, which means that there will be a demand for cottages in the near future. Already, about fifty cottages have been spoken for and can be delivered in a few days.

At different styles and sizes of these houses will be manufactured; Cottages Bungalows, Summer Houses, Hotel Cottages, School Houses, Campers Cottages, Etc. This system of construction makes the most desirable School House, and is recommended by the highest authorities. School Houses of this make are now being shipped from the State of Washington to New York.

The prices at which these houses will be sold will range from \$150 to \$750, according to number of rooms and the style of the building. Campers Cottages will cost from \$75 to \$100 each.

The margin of profit will be about 30 per cent, and taking into consideration the demand for these houses, and the saving in the cost, it would be conservative to estimate that the company will manufacture and sell over 500 houses per year. But, say that it sold only 250, and at the average price of \$450 each, would be an annual business of \$112,500.00. Estimate that after paying all expenses, commissions for selling, advertising, etc., that the net profit was only 10 per cent on the selling price, the dividends on the stock would be 75 per cent on the investment. This is an extremely nominal estimate for Klamath Falls and vicinity. The Company has the whole State of Oregon in which to operate.

J. Fred Goeller, owner of "Klamath Falls Planing Mills," and one of the largest stockholders of this Company, has the manufacturing contract to make these houses, and will begin operations at once, with a force of workmen, and increase the number of hands as fast as the demands require it.

There is no doubt but that within six months 50 men will be employed by this industry. These workmen and their families will live in Klamath Falls, adding materially to the business and building up of the city. Fifty workmen employed will mean a pay roll of over \$1000 per week.

In order to provide a surplus capital to carry a stock of houses on hand, ready for prompt delivery, the Company has set aside \$7000 par value of its stock, to be sold to the citizens of Klamath Falls, in amounts to suit subscribers. The first offering of 4000 shares, par value \$1 per share will be sold at 75 cents on the dollar.

Samples of the panels, and parts of this "Ready-Made House" can be seen at the office of E. T. Shortt, (DuFault's old stand) on Main street, opposite Masonic Hall. Also, at the office of J. Fred Goeller, proprietor of "Klamath Falls Planing Mills." Parties may call at either place and get more information.

**THE READY-MADE HOUSE COMPANY**  
 P. O. Box 393 Klamath Falls, Oregon

You will save money by buying sewing machines and all of your sewing machine supplies at Mullers, corner Main and 6th streets. 7-311f

### OUT OF THE GINGER JAR.

Put the lid on that peek of trouble. Whiskey straight makes a man crooked.

As the mind is bent so is the tongue inclined.

Don't expect to find your field of labor full of shade trees.

Some people never run into debt, they jump into it.

Many a man's dog can give him lessons in fidelity and integrity.

He who abandons the farm will find too late that good fortune has abandoned him.

A girl who can manage to get three engagement rings must have a circus of her own.

Some women never put checks to their purchases. They leave that for their husbands.

Why is a pig in the parlor like a house on fire? Because the sooner it is put out the better.

Landlady: "What's the matter with that pie?" Boarder: "It isn't fit for a pig, and I'm not going to eat it."

It is a waste of time to heat one's house with hot air. A little less talk and a little more time at the wood pile.

A naughty man says that a woman has about the same feeling for logic in an argument as for cockroaches in the kitchen.

Yes, Abram, one can readily afford to get married on an income of \$12

a week, if he will agree to turn it over to his wife every week.

The man who sits down to wait for his fortune, too late finds that the fickle creature went around the other way with a more masterful man.

Don't give your boy a knife unless he will first promise not to swap. Swapping leads to cheating, and that is bad for the boy and worse for him when he grows up.

Don't be ashamed to take your wife's advice. She knows a great deal more than she pretends, and has reserves of sense that would astonish you if you could see them.

November Farm Journal

The announcement that President Roosevelt is to deliver a course of lectures at Oxford University and at Carbone in Paris, following his African hunting trip, has awakened a keen desire to have him appear before the students of Germany's famous universities and a movement has been started to issue a formal invitation to him. The desire is particularly strong for the reason that he has been likened to the Kaiser in his national traits and has exchanged many expressions of friendship with the German Emperor. Should Mr. Roosevelt find it possible to include German in his European itinerary, he will receive a welcome such as has been accorded to few people. The Emperor is said to be very friendly to the proposition.

DON J. ZUMWALT, President

### Abstracting

E. M. BURE, Vice-Pres. and Treas.

Maps, Plans, Blue Prints, Etc.

## Klamath County Abstract Co.

Surveyors and Irrigation Engineers

BEAT E. WETHEW, Secretary

Klamath Falls, Oregon

## W. J. VAN SICKLE PRACTICAL BUILDERS AND CONTRACTORS

Estimates Given on all Kinds of Buildings. Store Fittings and Cabinet Work.

We are Making a Specialty of Furniture—Made to order for people who want something different from the usual styles.

SHOP AT 7th ST. AND KLAMATH AVE. Phone No. 36

### DR. C. P. MASON

Dentist

American Bank & Trust Co.'s Building

### DR. WM. MARTIN

Dentist

Office over Klamath County Bank

TELEPHONE 19

### D. V. KUYKENDALL

Attorney at Law

Klamath Falls, Oregon

## BRICK WORK AND PLASTERING

CHIMNEYS AND FIRE PLACES A SPECIALTY

H. E. CHILDERS  
 KLAMATH FALLS, OREGON

## CENTRAL CAFE

Open Day and Night

Private Dining Parlors

Oysters Served in Any Style

J. V. HOUSTON, Prop.

## It's Up to You

THE MATTER OF GETTING GOOD GROCERIES. Eating is much of your life. Naturally you want good goods. We have them and it's up to you to get absolutely the best. JUST PHONE 516—We'll do the rest.

## VAN RIPER BROS.

CAN'T BE BEAT—CHASE & SANBORN COFFEES

## DON'T BAKE

Let us do it for you. Everything Home Made. Prices Reasonable. BREAD A SPECIALTY.

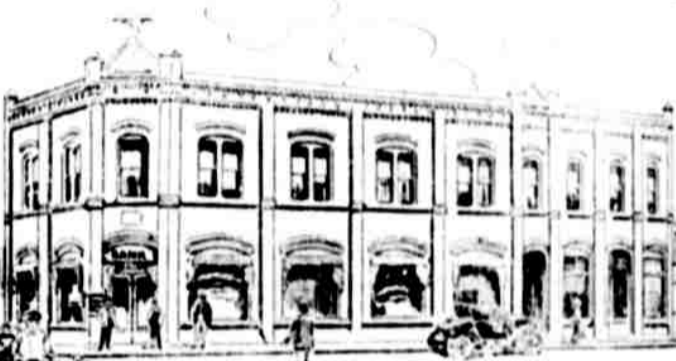
We put up box lunches; also lunches for hunting, fishing and picnic parties. A trial will convince you that it is cheaper to buy than to bake.

## KLAMATH FALLS BAKERY AND DELICATESSEN

Get Our Bread at Cawkins.

CHAS. E. WORDEN President A. M. WORDEN Cashier FRED MELHASE Vice President

## The American Bank and Trust Co.



CAPITAL, \$100,000.00

Cor. 5th and Main Street

## J. L. CUNNINGHAM

ARCHITECT and BUILDER

Plans and Specifications furnished. Estimates given on all classes of work, from Small Cottage to Office Buildings. In building you home combine style, originality and economy by having your plans prepared by me.

PHONE 615.

RESIDENCE—Washington Street, Between 8th and 9th.

## Freaks vs. Novelties

IF WE OFFERED YOU A SUIT WITH A SHEET IRON VEST AND BRASS CUFFS ON THE COAT, YOU'D LAUGH, AND SO WOULD WE—IF YOU HAD BOUGHT THAT KIND OF A SUIT. SOME MAKERS ARE FINDING A FEW SHORT-SIGHTED MERCHANTS WHO WILL OFFER THE PUBLIC THE HYSTERICAL CREATIONS WHICH THEY FOIST UPON THEM.

FRIEND MADE CLOTHES and ALMA MATER STUDENT STYLES are the most advanced styles made—they are the first to bring out the novelties of the looms and the dyers, while their own designing represents the newest ideas in tailoring. Every garment they make is intended for gentleman's wear—not for walking sign boards. If you want to be conspicuous, don't buy your clothes here—If you want your clothes neat, perfect fitting, stylish and in good taste we'd like to serve you. Our novelties are not freakish—and we show more of them than any store in the city.



## Portland Clothing and Shoe Store The Outer Garment Shop for Men