

MARSH LANDS OREGON'S RICHEST SOIL ABEL ADY PHONE 303

50 PER CENT. VEGETABLE MATTER. KLAMATH'S GREATEST BARGAINS AT \$25 PER ACRE AND UPWARDS. EASY TERMS

THE EVENING HERALD

Issued Daily, Except Sunday, by the
HERALD PUBLISHING COMPANY
 W. O. SMITH, Editor

SUBSCRIPTION RATES

Daily, by mail, one year	\$5.00
Daily, by mail, six months	2.50
Daily, by mail, three months	1.25
Daily, by mail, one month	.50
Daily, delivered by carrier, one week	15

KLAMATH FALLS, SATURDAY, OCTOBER 24, 1908.

LOW RATES IN 1909.

Travel to the North Pacific Coast next summer will undoubtedly be the heaviest in the history of the transcontinental railroads. The railroads have fixed upon the rates that will be charged from what is known as the St. Paul and Missouri River points. At the recent meeting of the Transcontinental Passenger Association the rates for the Alaska-Yukon-Pacific Exposition next summer were settled.

From the following points—Omaha, Council Bluffs, Pacific Junction, Atchinson, Leavenworth, St. Joseph, Kansas City, St. Paul, Minneapolis, Duluth and Superior—the round trip rate to the North Pacific Coast points—Seattle, Tacoma, Everett, Bellingham, Victoria and Vancouver, B. C.—was fixed at \$50.

The tickets will go on sale May 25, 1909, and continue on sale until September 30 with a final return limit of October 31.

These rates and the wide limit of time will stimulate travel to this section as never before. Thousands drawn by the magnet of the great Pacific World's Fair will come with the idea of looking into the resources of the country and hundreds of intending settlers will use this unexcelled opportunity to make their investigations.

The liberal rates for the St. Paul and Missouri River points means a like reduced round trip rate from Chicago and St. Louis points and proportionate reduction from extreme Eastern points. Never before have people had such a splendid opportunity.

JONES FOR TAFT.

Frank H. Jones, Secretary of the American Trust and Savings Bank of Chicago, who served under President Cleveland for four years as First Assistant Postmaster General, and who has been identified with the Democratic party for thirty years, has declared himself as a warm supporter of Mr. Taft. In a signed interview given to the Republican National committee Mr. Jones gives his reasons for renouncing Bryan and the Democratic party. The interview is as follows:

"I shall vote for Mr. Taft because I believe his election will insure prosperity to the farmer, the mechanic, the business man and to the country generally.

"He is a wise, safe, conservative and courageous thinker on economic questions affecting the people and the public welfare.

"He has had large and responsible experience in public affairs and has discharged his many important public duties well, faithfully and patriotically with repeated proofs of his great administrative ability.

"He is a strong, forceful, straightforward man, direct and frank in speech and act and without subterfuge or evasion. He is a man of the people, full of sympathy for his fellowman, hating oppression and unfair dealings and devoted to the best development of this country on just and fair lines that shall insure everyone his just and fair proportion of this country's prosperity."

UNIVERSITY OF OREGON.

The "Lane County Plan" for country high school organization, which was explained in the September number of the University of Oregon Bulletin, has aroused a great deal of interest toward the organization of country high schools in all parts of Oregon. Requests for Bulletins and information are being received by the University Registrar in large numbers. The plan is so simple and works so admirably in actual practice that there is little doubt that the number of high schools in Oregon will be more than doubled within a comparatively short time. It makes possible better high schools in the larger towns and the establishment of others in country districts where none have existed, obviating the necessity of sending children away from home to school if their education is to continue above the eighth grade.

One of its many great advantages is that large bodies of valuable land, timber and other, owned by non-residents and corporations, which have always escaped taxation for school purposes, are made to pay their full share. Linn and Marion counties are already taking up the plan, where it is being strongly agitated and will be voted on at the November election, and the matter is being strongly talked of in a half dozen other counties.

Judge Moss of the criminal court of Memphis, Tenn., has instructed the grand jury to indict managers of playhouses who open on Sunday, and also to get the names of persons attending theaters on the Sabbath. It is claimed spectators are equally guilty with the managers and the actors.

Egg Toast—Beat one egg, add one-half teaspoonful of salt and one cupful of milk. Soak in it from four to six slices of bread, then brown them in hot butter on each side. Serve with crabapple jelly. This is a convenient dish for supper; it is warm, savory and substantial; it may be varied in many ways and quickly prepared when the larder seems to be nearly empty.—November Delineator.

William R. Hearst has denied the Collier's Weekly story to the effect that Charles Stump had stolen the Archbold letters that have been used with such effect by Hearst in his campaign for Hisgen. Hearst denied that he knew either Stump or Wm. W. Winfield, the negro, who, Stump said, aided in the theft of the letters from Archbold's office. Hearst declared that he would not attack Taggart and Kern while he was in Indiana. He denied that he had any letter from Archbold to Senator Aldrich of Rhode Island.

Erzell has given up its attempt to corner the coffee market of the world after suffering a loss of \$15,000,000. With the avowed intention of keeping up the price the government of Sao Paulo, the chief state of Brazil, has been for two years purchasing coffee from planters. After an expenditure of \$75,000,000, and with 8,000,000 sacks of coffee on hand, the valorization scheme is to be abandoned. A loan of \$75,000,000 to take care of the present enormous accumulations is soon to be offered for public subscription. The collapse of this attempted corner ends what is regarded as one of the most interesting but foolhardy financial experiments attempted. The "valorization scheme" had its origin six years ago, when an enormous Brazilian coffee crop sent prices down violently to 3½ cents a pound in the New York market, actually below the cost of production. Sao Paulo immediately imposed a prohibitive tax to prevent the planting of new trees, but this had no effect on crops, as the tree does not begin to produce marketable berries for five years, and does not reach full maturity until it is ten years old. Bumper crops followed one another, and in 1905 the state was genuinely alarmed when the harvest returned 20,000,000 bags, a surplus over the entire world's requirements of something like 3,000,000 bags. Then the scheme was planned. Three states of Brazil, Sao Paulo, Rio and Minas, set out to restore the price of coffee to its old profitable level. Besides imposing a large surtax on exports, the states began buying, with borrowed money, all unexported coffee. In two years Sao Paulo had purchased from the planters no less than 8,000,000 bags at an average cost of \$10 a bag.

NOTICE.

Owing to the condition of the roads it is necessary for us to advance the freight rate 10 cents per 100 pounds on all classes of freight until further notice.

From and after this date the joint rate between the Southern Pacific railroad company and the McIntire freight teams is cancelled and in future combination rates will apply. J. M. McIntire Transportation Co. 20-6t

Clothes That Individualize



you and separate you from the throng who carry around uncomfortable and unsatisfactory "ready-to-wear" ready-made clothing, are, as a matter of fact,

Very Modest in Cost

when ordered from us. You can better afford to wear them than the other kind. Make a selection from 500 different cloths and have us take your measure. Then we'll have the suit or overcoat

Made by Ed. V. Price & Co.

of Chicago, famous as the largest makers in the world of GOOD tailor-made clothes. It will be the essence of all that is distinctive, perfect and satisfying—so good you'll come to us for more.

Three-Button Novelty Sack, No. 518.

Pantatorium, Geo. W. McLane, Prop

Don J. ZUMWALT, President

Abstracting

F. M. BURN, Vice-Pres. and Treas.

Maps, Plans, Blue Prints, Etc.

Klamath County Abstract Co.

Surveyors and Irrigation Engineers

BEAT E. WITHERS, Secretary

Klamath Falls, Oregon

HOTEL HOUSTON

RATES

Single Meals	- - -	35 cents
Meal Tickets, 21 Meals	- - -	\$5.00
Rooms	- - -	25 and 50 cents per night
Rooms	- - -	\$1.50 and \$2.00 per week

J. A. HOUSTON, Proprietor

BRICK WORK AND PLASTERING

CHIMNEYS AND FIRE PLACES A SPECIALTY

H. E. CHILDERS
 KLAMATH FALLS, OREGON

DR. WM. MARTIN

Dentist

Office over Klamath County Bank

TELEPHONE 19

D. V. KUYKENDALL
 Attorney at Law

Klamath Falls, Oregon

2500 ACRES FREE.

The Lakeside company has 2500 acres of land under the Adams ditch that it will give RENT FREE for one year. This includes the use of the land and water. The renter must clear and place the land in cultivation. The renter gets all the crops but we reserve the right to pasture the stubble.

The Lakeside Company,
 J. Frank Adams, Manager,
 Merrill, Oregon.

FOR SALE.

Cottage, with out-buildings, city water, electric lights, two lots, seven blocks from P. O. Must sell quick. A bargain. Some furniture. Call at house. 19-1wk M. D. WILLIAMS.

It's Up to You

THE MATTER OF GETTING GOOD GROCERIES. Eating is much of your life. Naturally you want good goods. We have them and it's up to you to get absolutely the best. JUST PHONE 516—We'll do the rest.

VAN RIPER BROS.

CAN'T BE BEAT—CHASE & SANBORN COFFEES

DON'T BAKE

Let us do it for you. Everything Home Made. Prices Reasonable. BREAD A SPECIALTY. We put up box lunches; also lunches for hunting, fishing and picnic parties. A trial will convince you that it is cheaper to buy than to bake.

KLAMATH FALLS BAKERY AND DELICATESSEN

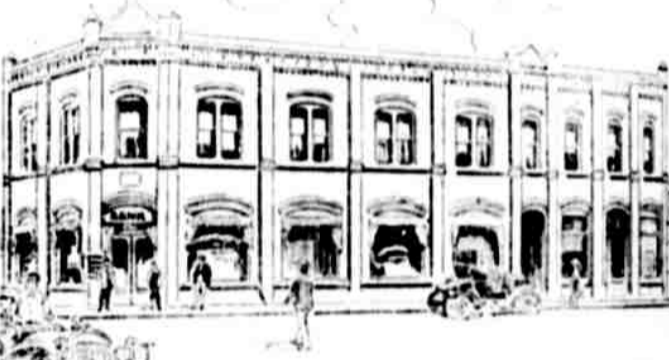
Get Our Bread at Cawkins.

CHAS. E. WORDEN, President

A. M. WORDEN, Cashier

FRED MELHAR, Vice-President

The American Bank and Trust Co.



CAPITAL, \$100,000.00

Cor. 5th and Main Street

J. L. CUNNINGHAM

ARCHITECT and BUILDER

Plans and Specifications furnished. Estimates given on all classes of work, from small cottage to office buildings. In building you home combine style, originality and economy by having your plans prepared by me.

PHONE 645.

RESIDENCE—Washington Street, Between 8th and 9th.

Freaks vs. Novelties

IF WE OFFERED YOU A SUIT WITH A SHEET IRON VEST AND BRASS CUFFS ON THE COAT, YOU'D LAUGH, AND SO WOULD WE—IF YOU HAD BOUGHT THAT KIND OF A SUIT. SOME MAKERS ARE FINDING A FEW SHORT-SIGHTED MERCHANTS WHO WILL OFFER THE PUBLIC THE HYSTERICAL CREATIONS WHICH THEY FOIST UPON THEM.

FRIEND MADE CLOTHES and ALMA MATER STUDENT STYLES are the most advanced styles made—they are the first to bring out the novelties of the looms and the dyers, while their own designing represents the newest ideas in tailoring. Every garment they make is intended for gentleman's wear—not for walking sign boards. If you want to be conspicuous, don't buy your clothes here—If you want your clothes neat, perfect fitting, stylish and in good taste we'd like to serve you. Our novelties are not freakish—and we show more of them than any store in the city.



Portland Clothing and Shoe Store

The Outer Garment Shop for Men