

## HUNTING A WILD MAN

### Party Searching for Bearded Human Near Spencers

## THOUGHT NOT CRAZY BUT HIDING

### Lives in Camp in Thick Brush and Steals Food From Cabins of Settlers in That Vicinity—Warrant Issued From the Justice Court of This City

Deputy Sheriff Schallbeck, J. C. Smith and P. D. Skinner started for Spencer creek this morning armed with a warrant for the arrest of an unknown man, who lives in the woods near Spencer's and gathers his food from the cabins in that vicinity. It is said that the man has been seen in that vicinity since early June, but he has always made it a practice to avoid all parties coming into that section of the country. He has been seen and conversed with but once. Two men, one a timber cruiser, the other a settler in that section of the country, caught him in the act of stealing food from a cabin. He did not see them until they were close by and escape was impossible. He grabbed his rifle and stood his ground, making, however, no effort to use the gun but holding it so that it would be ready for immediate action. He did not deny stealing the articles from the cabin and had nothing to say except when forced to reply to questions. In appearance he resembles an Italian. He wears a long shaggy beard and carries a large bowie knife. He was permitted to go his way, but the parties watched him and found that he had an outdoor camp in a heavy growth of brush. From the conversation that these parties had with the man they do not consider him demented but are of the opinion that he is in hiding for some reason.

He has since been seen by several parties and as a number of cabins have been robbed in that section lately he is given the credit for it. He has all the settlers in that section frightened and an attempt will be made to capture him so that the mystery can be solved.

## Vacation Time In Klamath Land

Take to woods! These are the days when tired salesmen, office men, the fellow who peeps at you through the wicket of

the cashier's desk and even the farmer wearied with toil of harvest season loves to hide himself away to the big gurgling springs of the Indian reservation and recline in the shade of forest giants while hoping some foolish trout will fasten upon the hook just out of sight beyond a gently tossing cork.

Every year Klamath people are disappointed in their plans for a summer outing—some of them. With Crater lake, the greatest marvel among extinct volcanoes of the entire world, with the chain of lakes extending through a vast region, and with variety and bounty of game found in only the favored spots, Klamath county simply cannot be surpassed as a place for the pleasure seeker who seeks relief from the tedium of daily affairs in exacting lines of business.

People are going and coming between Klamath Falls and the hunting grounds and fishing spots of the Upper lake region daily. Some bring back toothsome morsels for their friends and others are content to simply supply enough trout for the camp table. All return with heightened color and a store of good health gathered from the ozone of the atmosphere and the balm of cool waters.

Klamath is the center for the finest resort region in America. It is for Klamath people to tell the world about it and that is what the Chamber of Commerce is determined upon accomplishing. Judge Baldwin of the board of directors of that organization is now in Portland to try to arrange to have the Y. M. C. A. boys come this way en route to Crater lake, and also to secure other excursion parties to come this way. The other directors are going to Fort Klamath Saturday evening to confer with the people of that locality to secure closer co-operation in entertaining tourist visitors.

Fifty crates fine Rogue river valley peaches at the Monarch. \$1.25 per crate. Phone 311.

## Harriman Party Expected Soon

Colonel W. H. Holabird, of the personal staff of E. H. Harriman, and in charge of Pelican Bay Lodge, is in the city. He has been at the Bay street early spring and has had personal supervision over all of the improvements that have been made. When asked when the Harriman party was scheduled to arrive, Mr. Holabird said:

"I cannot say as to that. I have just had a telegram from New York, telling me to have everything in readiness, but it did not state when the party would arrive. It is a long journey from New York and it will be several days before they can get here. So far as I know there will be only the immediate family, the boys' tutor and the family physician. I have, however, received instructions to make preparations for a few friends, but I do not know who they are and there is no certainty that they are coming."

Colonel Holabird is very enthusiastic over the road he built from the lodge to the Al Melrose ranch. He says he built sixteen miles of road at a cost of \$200, and that it necessitated the removal of one hundred tons of rock. He maintains that the road that he built at the expense of Mr. Harriman is better than any county road in Wood river valley and that it is the equal of any mountain road in the country. He thinks it very good for automobilists as he and his family made a trip from the lodge to Crater Lake in one day, giving them ample time to enjoy the beauties of the great wonder.

Assessed at \$7 Per Acre.

The board of equalization of Siskiyou county has fixed the assessed value of timber lands at \$7 per acre. The cut-over land has been assessed at \$1 and the board reduced this to 50 cents per acre. It seems that the rates are satisfactory to all the large land owners.

## Pokegama Range Goes to Sheepmen

J. F. Kimball, of the Weyerhaeuser Timber company, arrived in the city last night from an extended trip to the woods north of Bly and to Lakeview. Mr. Kimball has been suffering from an attack of rheumatism, but nevertheless he has been getting around and while at Lakeview he made arrangements to stock the Pokegama range with Lake county sheep. This range includes about 600,000 acres of timber land owned by a number of the large syndicates, who organized the fire patrol last spring.

Mr. Kimball did not lease all of the range, but he has other parties coming in from eastern Klamath and Lake counties to look over the territory, and it is probable that all of the range will be leased before the season advances much further. He has taken parties out today to look over lands along the Upper lake. Dave Edler, well known as Lake county's sheep king, is bringing 6000 head of sheep through the lava beds to put on the range near Pokegama.

According to all reports feed is rather scarce in Lake county and the sheepmen must find additional range if the mutton is up to the standard this fall. The timber companies are very desirous of leasing the lands as it gives them better fire protection, and in this connection Mr. Kimball states that the patrolmen have had considerable trouble with fires since the weather has become so dry.

## Hotter Than Klamath.

The present hot spell is the hottest of the season. The hot wind is rapidly drying up the corn and other staples. Sunday the thermometer at 1 o'clock was 103 at Medford, 106 at Talent and 105 at Central Point. The nights are sultry, but not unendurable.—Medford Tribune.

Preserve kettles and jelly glasses are ripe at the Square Deal.

## WAS MAN DROWNED?

### Intoxicated Passenger's Mysterious Disappearance From Steamer Klamath

Tuesday evening when the steamer Klamath left the landing at Teeters it had for a passenger a man who was under the influence of liquor to such an extent that he had to be helped onto the boat. He was a passenger on the stage and had a through ticket to this city. He had no sooner boarded the boat than he became abusive and insulting and disgusting to the passengers on board. He was taken to the stern of the boat and a bed made for him, where he soon fell asleep. Upon arrival in this city he was not disturbed while the boat was being unloaded a process that requires about one hour. During this time he was seen by several parties lying asleep on his improvised bed. An officer was telephoned for, and when he arrived the man was gone and nothing has been heard of him since.

It is a question if he fell over the railing on the boat when he awoke from his stupor, or if he made his way off the boat and went about his business. There is no assurance that he left the boat but it has been stated by some that a splash in the water was heard while the boat was being unloaded.

## DRINK CAUSES DEATH.

Coroner Earl Whitlock Has First Case Since Taking Office.

Coroner Earl Whitlock was called to Dunn & Long's camp yesterday on account of the sudden death of F. Beckans, an Australian, who came here from San Francisco on Tuesday night. He and other parties arrived in the city in a wagon, the deceased being in an intoxicated condition. He was taken to the camp of the ditch contractors, which is several miles south of town, and put to bed. Yesterday morning he was found in his bunk with all signs of life gone.

After ascertaining the facts the coroner decided it was not necessary

to hold an inquest. A post mortem examination showed that death was due to a hemorrhage of the lungs, which was caused from excessive drink. The remains were buried today. He was about fifty years of age.

## Another Launch For Crater Lake

Another launch and a number of row boats are to be added to the Crater lake flotilla. The company has purchased the fine gasoline launch owned by A. F. Stankey. It has a capacity for fifteen passengers and an 8-horse power engine. The boat has been loaded and will be taken to the lake at once. A large amount of material for constructing rowboats has also been purchased and will be taken there at once. Clyde Huffman, who is a licensed engineer, will have charge of the boats on the lake and will put in his time building rowboats.

Will G. Steel has had 4000 pounds of provisions taken to his camp near the Arant station and is now operating a three-seated wagon between the camp and the rim of the lake. He is now at work on a plan whereby tickets will be sold from this city to Crater lake and return.

## Special Announcement.

At the Monarch a complete line of fruits and melons of all kinds are received daily. Soft drinks, milk shakes, lemonade sodas, Cragg waters, ciders and sodas. Ladies invited to call and see our stock. Goods delivered to any part of the city. Phone 311.

OTTO HEIDRICH, Prop.

Business is pressing at the Pantorium. 7-13

## COOKE LANDS IN JAIL

### Arrested at Baker City on Land Fraud Business

## WELL KNOWN IN KLAMATH FALLS

### Englishmen Who Attempted to Operate in Timber in This County and who Purchased Walker Ranch Making \$10,000 Payment With Bogus Check

Henry E. G. Cooke, now of New York City, but for a time a resident of this city, has been arrested at Baker City on a charge of land fraud, and he is now in the Multnomah county jail in default of \$5000 bonds. The operations of Cooke and his accomplices are rather interesting and the real seat of operations is New York City, while Harney county in this state is merely a sort of a corral where the sheep are taken while undergoing the process of shearing.

The office in New York arranges for the timber land seekers to come to Baker City. First, however, they pay the Eastern office \$100 and pay their own expenses to Oregon. They next get a contract providing that they are to be located on timber claims, that the Oregon Ranching & Timber company, or in other words, Cooke, for this is merely a fake company he uses, will furnish the money necessary to make proof on the claims and will also board the land seekers at the rate of \$1.00 per day, and when title is acquired to the land it is to be turned over to the company for \$2000, less the \$400 and the board bill and other incidental expenses. The scheme was uncovered by a New York newspaper reporter, who took up one of the contracts under an assumed name, and the arrest of Cooke followed. It seems that he has been connected with a number of schemes since leaving this city under suspicious conditions, and also before coming to this country from England. His scheme in Harney county evidently was to get the \$100 from every entryman, for it is generally known that there is no land in that section that is valuable for timber.

Henry E. G. Cooke is not unknown to the people of Klamath Falls. It will be remembered that he came here about the first of July, 1907, making the acquaintance of several business men of this city. Cooke was a suave Englishman, with a decided English accent, and would impress the average citizen as being a rather well-to-do sort of an individual. He secured an option on the Walker ranch at Bly and went so far as to give a check for \$10,000 in payment of the first installment of the purchase price. At the same time he had articles of incorporation prepared for the purpose of taking over the property in question. Incidentally he gave Attorney Stone a check for \$300 for legal services. These checks were drawn on a Lakeview bank. Mr. Walker and Mr. Stone became suspicious of Cooke and telephoned the bank at Lakeview with

reference to Cooke's financial standing. They were informed that Cooke had 75 cents on deposit there and had drawn quite a number of checks against that amount. Cooke soon left Klamath Falls, after leaving a number of other checks as souvenirs with local merchants and others. He went to Los Angeles at the time and being threatened with arrest, settled some of the small checks he had given here.

His scheme in trying to pose as a capitalist in dealing with Mr. Walker has always been a mystery as it was very evident that he could not handle the property until a substantial payment had been made, but it is evident that he had plans which were not disclosed. At any rate the people of Klamath county seem to have been lucky, in view of recent developments.

## WILL VISIT CRATER LAKE.

Chamber of Commerce Should Head Oregon Editors This Way.

The state Editorial association of Oregon, a hundred strong, propose to visit Crater Lake via Medford about the middle of August, if suitable arrangements can be made.

No greater advertisement could be given this section than the proposed visit of state editors. Practically every editor in Oregon belongs to the organization, and every one who can get away is planning to take the outing. The Commercial club will do all that is possible to make the excursion a success.

Here is a job for the Klamath Chamber of Commerce to do everlasting good for this county. The Oregon editors should by all means be induced to visit Crater Lake via Klamath Falls. The Chamber might co-operate with the commercial organization at Medford and arrange it so that the party will either go or come via this city.

## Want to Oust Hanna.

According to the Medford Tribune there is a strong probability that the prohibitionists of Jackson and Josephine counties propose to try the recall law on Judge H. K. Hanna. It will be remembered that Judge Hanna decided that the city charter of Medford superseded the local option law, and regardless of the popular vote in Jackson county, he ruled that Medford had a right to license saloons. The prohibitionists deny that a petition for a recall is being circulated by them.

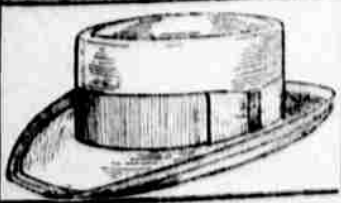


## Our Tape Line

### is ready for you

### Have Your Clothes Made to Order the modern way

Over 1000 bright, new snappy samples to select from. Our motto: "If the clothes don't fit don't take them."



GREAT FALL LINE of HATS NOW HERE IN ALL THE NEWEST SHAPES AND COLORS

## K. K. STORE

KLAMATH FALLS FASHION SHOP  
Klamath Falls, Oregon

The proof of the freezer is in the freezing

### The White Mountain Freezer

makes more cream, better cream, and makes it easier and cheaper than any other freezer on the market

LET US SHOW YOU WHY

## ROBERTS & HANKS

HARDWARE DEALERS