

Serving Meals Correctly

By BETTY BARCLAY
the Well-Known Food Writer.

MEALS should be served correctly, even those that are placed before the family when alone. Unless this is done, sooner or later some member of the family will be embarrassed because he or she does not know exactly what to do with some utensil, dish or cloth that is placed before him.

From 18 to 20 inches of space at the table should be allowed for each guest.

The number of forks needed for the meal should be placed at the left, in the order of use from left to right. The spoons and knives go to the right—in the order of use from right to left.

Set the water glass or goblet at the tips of the knives.

Lay the napkins at the left.

All silver should be placed half an inch from the edge of the table, the edges even.

Relishes in small dishes may be placed near the center of the table.

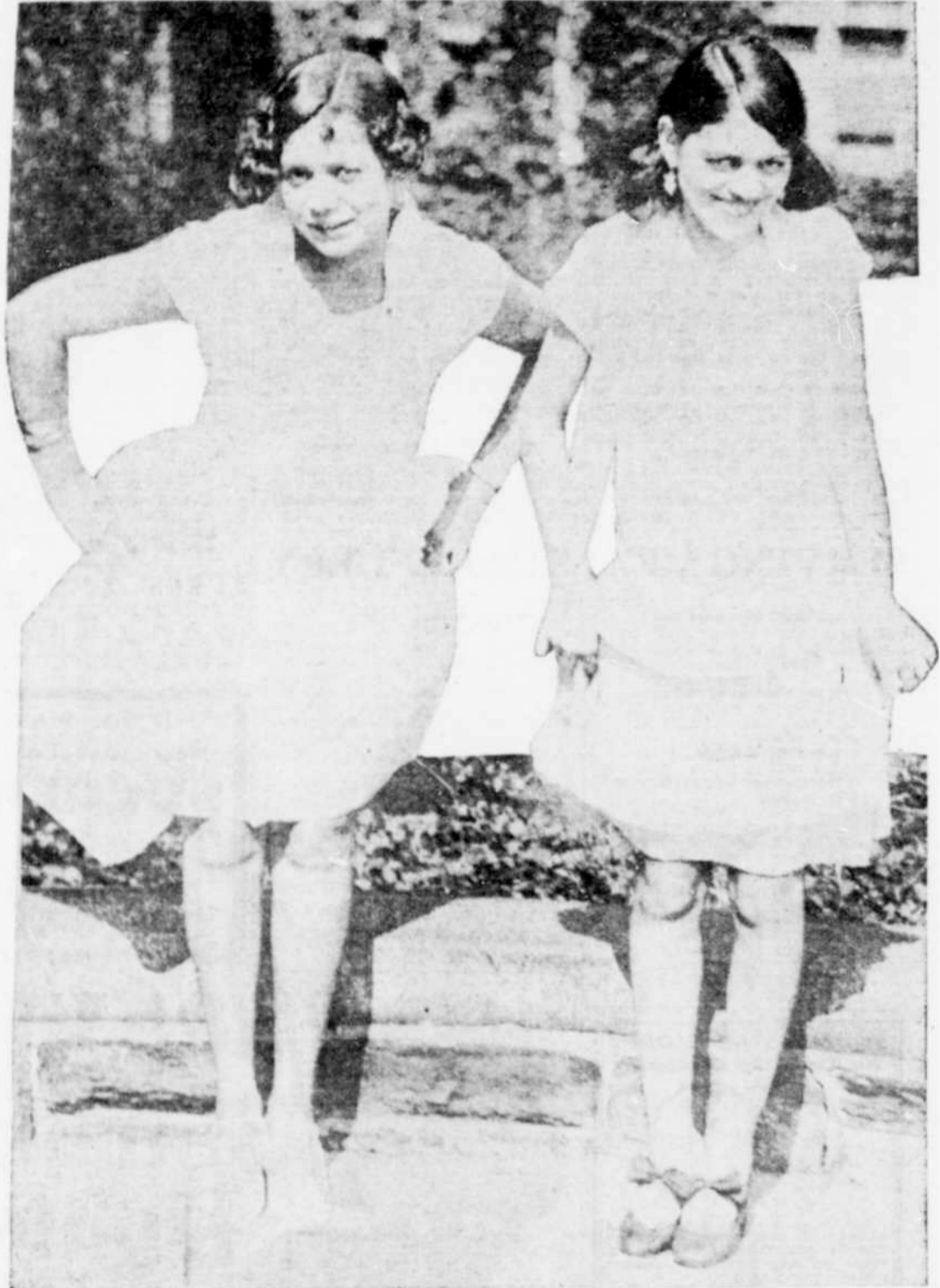
The water glass should be three-fourths full.

A set of salts and peppers should be allowed for each two people.

Butter and two small slices of bread crackers, or rolls should be upon the bread and butter plates when the meal is announced. Place the bread and butter plate above the tops of

(Continued on page six)

THEY LIKE "BARE LEGS" STYLE



Ardelle Meadows (right) and Ollie Alexander, hostesses at the Savoy ballroom in New York. They are popular and well-known ladies in Gotham. They are two obvious reasons for the rush to the "sophisticated" city every summer.

PRIMA DONNA



Marguerite Lee, a well known soprano whose voice has elicited very high praise. Miss Lee possesses a charming personality also.

THE LIFE OF BERT WILLIAMS No. 15 . .

Text by BEN DAVIS, JR
Drawn by A. W. RENNEGARBE



He made a "big-brother" habit of nicknaming everybody, and thus his faithful valet, Chappelle, he called "Chappy." "Chappy" had given him service for many years.



His necessary humorous trend of thought led him to undertake the writing of a serio-comic hand book on anthropology, which he might one day have published, had he lived.



He was a headliner in big-time vaudeville also, and always played to capacity houses. He often did this to help charities, and all worthy causes. It was often thought that his overwork in this manner contributed to his untimely death.