

Here is the Best Clothing Offer You Ever Had! A 10 DAYS SPECIAL SALE OF SUITS

It is not unusual to sell a suit for \$20.00. Every store is doing that every day; but to sell you a suit for \$16.85 that is equal in material and workmanship, in style and finish, equal in value to suits that bring \$20.00 and more, this is a matter of importance to you now. This Clothing Introduction will hold good only until SATURDAY, MAY 23, after which date the prices here given will be withdrawn.

- \$12.50 SUITS, INTRODUCTION PRICE : \$ 9.85**
\$15.00 SUITS, INTRODUCTION PRICE : \$11.95
\$17.50 SUITS, INTRODUCTION PRICE : \$14.65
\$20.00 SUITS, INTRODUCTION PRICE : \$16.85

All the Latest Suit Models, the New English Cut and Norfolks included in this Special Introduction Price. CONVINCE YOURSELF.

**Star Brand Shoes
Are Better For
All The Family.**

Bieber's
CASH STORE
THE QUALITY STORE

Report Not Encouraging

(Continued from First Page)

ly encouraging. Of the total elimination of 406,120 acres, he said, an aggregate of 106,460 acres have been withdrawn by the reclamation service, 12,420 acres are held under the Deschutes Land Company's segregation, 9760 acres are school land and 40,800 acres are patented—a total of 169,440 acres.

Of the remaining 236,680 acres open to possible entry, total of 182,600 acres are non-tillable, leaving only 54,080 acres open for actual settlement.

Of this area 54,080 acres about 20,000 acres are in the vicinity of Crescent and LaPine. In the vicinity of Silver Lake and Fort Rock there are approximately 34,000 acres of tillable land, mostly covered with a growth of sage brush. The land around La Pine and Crescent is covered with jackpine timber, which has no commercial value. It can be used only for firewood and fence posts.

The average cost of clearing such land—that is where labor must be employed is \$35 an acre. A man not counting his own time could do it for less it is believed. The land is generally level, but in some places is slightly rolling. Good commercial yellow pine is found in some parts of the rolling district.

The general good character of the soil in the jack pine district is about a two to four-inch layer of a decomposed pumice, containing more or less vegetable matter. Beneath this about 12 to 14 inches of a decomposed pumice of a lighter color, and below this is a pure pumice formation. The soil in the yellow pine timber district is shallow; that is the decomposed pumice seldom reaches to exceed a depth of about four inches, under which is the coarse pumice formation.

Throughout the jack pine district the water table does not exceed a depth of from four to six feet.

The elevation of the entire area varies from 4200 to 4500 feet. Killing frosts are encountered throughout the year.

Little demonstration work has been done in the eliminated area. Timothy, red top and wild grass hay are grown in the adjacent river bottoms, however. Good hay has been grown in areas similar to those in the eliminated district. Best results are obtained under irrigation however.

There is no market for the crops owing to the distance from the railroad. Mr. Brewer says the best way for a settler to do is to raise livestock.

"Unless a homesteader has sufficient means to carry him for a period of at least three years he will have to undergo exceeding hardships before he can get any returns at all from his land," says the report.

The land in the Fort Rock and Silver Lake country is not even as good as that around Crescent and La Pine. It is badly broken. The soil is of a volcanic ash formation, with a mixture of pumice. There are a few 320 acre homesteads entirely tillable. Water is obtained at from 60 to 200 feet. Frost is possible the year around. Rye is the only grain grown there successfully. Some wheat has been sown this year. Potatoes are now being introduced and may be grown successfully.

The distance from the railroad varies from 50 to 100 miles. Several claims in this district have been abandoned.

Scores of homeseekers are in the eliminated district and it is evident that there will be more applicants for the land than there are claims. People should not be encouraged to go into the eliminated district, declares Mr. Brewer.

Voters Total 226,924
(Continued from First Page)

tion party over other minor parties is due to the recent victories of the "dry" element in this state is the belief of the men who oppose the manufacture and sale of intoxicating liquor.

The registration for the 1913 primary was as follows: Total 131,880; Republican, 93,070; Democratic, 28,417; Prohibitionists, 1655, and Socialists, 4928. The registration for the general election that year was 159,888.

An usual the Republican party has a big lead this year in the registration figures. The figures are: Republican, 134,687; Democratic, 69,980; Prohibitionists, 11,177; Socialists, 6273, and miscellaneous, 8534.

C. H. McKendree left for San Francisco this week on business connected with his Fall River project.

FOR GOVERNOR GUS. C. MOSER REPUBLICAN

HE STANDS FOR ECONOMY AND EFFICIENCY AND DIGNIFIED LAW ENFORCEMENT. FEWER COMMISSIONS AND REDUCTION OF EXPENSE IN EACH DEPARTMENT OF THE STATE.

Synopsis of Record and Platform
I was born and reared upon a farm in Buffalo County, Wis.; educated myself by my own efforts, and have practiced law in Portland since June 1, 1894. Have always taken an active part in public affairs, and have held several official positions.

I stand by my record as state senator at the last session of the legislature. I worked and voted against the new tax law, and favor a law making taxes payable semi-annually, without penalty.

Only five of the laws passed at that session were referred to the people by referendum petition; four of these the people approved by over whelming majorities, and I voted for them; the fifth was almost as badly defeated, and I had voted against it in the legislature.

I worked and voted for Senator Malarkey's minimum wage bill for women, providing for an impartial commission to fix the maximum hours of labor and the minimum amount of pay.

I favor a similar law providing for an impartial commission without compensation, to fix the maximum hours for men in the various industrial occupations; this in preference to a flat eight hour law.

I favor further good roads legislation with state aid, so that we may have a cheaper transportation from the farms and producers in every section.

I favor the reduction of taxes by consolidation of various commissions or the abolishment thereof, and placing their duties into the hands of the State Board, and by the reduction of the expense of conducting the various departments of the state.

I favor suitable appropriations for our State Educational Institutions, and the continued improvement of our great bulwark—the public school system.

And above all, I favor the vigorous and efficient enforcement of all the criminal statutes, including those regulating or prohibiting the sale of intoxicating liquors, and this I shall do with firmness and impartiality. The rich, the poor, the great, the humble, the capitalist, the laborer, the churchman and the business man shall be measured by the same standard, and each shall answer for his own acts.

(Paid Adv.)

High Grade Postoffice

A Washington dispatch dated May 8, says: The post office department is creating many new postoffices in northern California just now. These are not altogether of the summer variety, which flourish for six months and are discontinued in the autumn. An order has just been issued for a new postoffice at High Grade, Modoc County, with William Richard Trumbull as Postmaster. The present address is New Pine Creek, Oregon.

Bring The Kids To See Old Doc Yac

and
The Artists Dream
an amusing picture of animated cartoons, featuring the hero of the Sunday supplements, also:

"The End of the Run"
—Kalem
"Which"—Vitagraph
**SNIDERS OPERA HOUSE
SUNDAY, MAY 17**

FRIDAY, MAY 15
"Sissy Bell"
"The Young Mrs. Eames"
"The End of the World"
"A Saturday Holiday"
TUESDAY, MAY 19
"The Ballyhoo's Story"
"Pathe Weekly"
"Bill's Career as Butler"

Admission :: 10c
(Licensed Films—The Best Made)

Many Cases To Be Tried

(Continued from First Page)

orce suit of M. E. Brant Lane vs. B. F. Lane.

The damage suit of J. A. Morris vs. the N.-C.-O. Railway Co. was dismissed.

Walter Strodder, negro, indicted for assault with intent to kill, upon advice of his attorney, T. S. Farrell who was appointed by the court, pleaded guilty to the charge of assault upon his wife, Beatrice Strodder, with a dangerous weapon. He was given an indeterminate sentence in the State penitentiary of from six months to ten years.

The first jury trial of the term was begun Tuesday, that being the case of the State vs. R. A. Harrower, the defendant being charged with the removal of poles and wire of the Lake County Telephone company from the property of the Northwest Townsite Company. The State's case was conducted by County Attorney O. C. Gibbs and Attorney L. F. Conn appeared for the defendant. From the testimony developed that the line had been in a dilapidated condition for some time and that the improvements made by the crew of Lessee K. S. Miles, just prior to Harrower's removing it, was not done in accordance with the understanding when the line was first placed across the property. The jury was out but a short time when they returned a verdict of not guilty.

The indictment against H. J. Huntington was this morning dismissed upon motion of the District Attorney. Testimony which was not

DON'T DARE NEGLECT A COUGH

Relieve the discomfort and avoid the serious complications a neglected cough often leads to, by using

Rexall Cherry Bark Cough Syrup

We sell more of it than all other cough syrups combined. It is extremely pleasant to take. Each bottle contains more than most cough remedies sold at the same price. We guarantee it to relieve your cough or your money back. Sold only by

The Thornton Drug Co.
THE REXALL STORE

brought out before the grand jury later developed to justify this action. The next jury case will be the civil action of the Willis Furniture Company vs. the Horticultural Fire Relief of Oregon. It is stated that the only remaining criminal trial is the matter of the State vs. J. L. Freeman, but owing to the many other actions it is believed that this term of court will continue until after the first of next month.



JUDGE SAMUEL T. RICHARDSON
Candidate for
JUSTICE SUPREME COURT
Republican Primary Election, May 15, 1914

To My Friends in Central Oregon:
There are four Justices to elect to the Supreme bench. From personal knowledge I know that Samuel T. Richardson is one of the best qualified lawyers in the State for one of the places and ask that my friends vote for him.

Yours truly,
A. W. ORTON,
925 Yeon Building, Portland, Ore.
Register U. S. Land Office, Lakeview,
Oregon, from 1909 to 1913.

SAVE THIS FORMULA

The following is highly recommended as a Horse Tonic:

Powdered Nux Vomica 1/2 oz.
Powdered Echinacea 4 oz.
Ground Oil Cake - 12 oz.

Mix them and give one tablespoonful on feed three times a day.

This is not only inexpensive but a splendid tonic and strengthener. TRY IT.

FAIRPORT INN

"HOME AGAIN"

UNDER NEW MANAGEMENT

The Finest Hotel and Cuisine Between Salt Lake City and Spokane, Washington. The Sunday "Troutfest" of Trout Dinner at 50 cents per plate is the talk of the three states. Motoring Parties, Fishing Parties and all visitors given every possible attention.

Fairport is the Glory Spot of Golden California—one of the most delightful Summer Resort Points in the Entire North. Bathing, boating, fishing, motoring and every pleasure for you and your friends.

SUNDAY DINNERS FIFTY CENTS EACH. ROOMS AND OTHER ACCOMMODATIONS IN PROPORTION. WE WANT YOU TO COME WITH US INTO JOYLAND. WRITE OR PHONE AND WE WILL TAKE PLEASURE IN MAKING EVERY ARRANGEMENT FOR YOUR ACCOMMODATION AND ENJOYMENT.

FAIRPORT INN **FAIRPORT, CALIF.**
M. C. DONNELLY, Manager

Northern Auto Stage Line

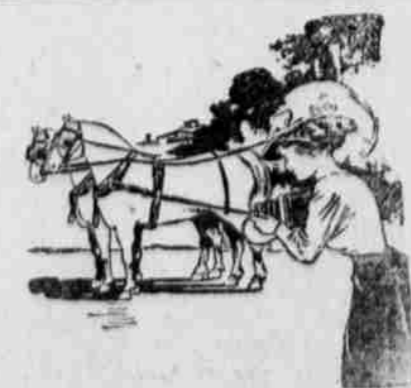
CARRYING U. S. MAIL

Leave Lakeview 7:00 A. M.
Arrive Paisley 11:00 A. M.
Arrive Silver Lake 6:00 P. M.
Return to Lakeview 5:00 P. M.

Fare to Paisley, \$5.00; Round Trip, \$9.00.
Fare to Silver Lake, \$10.00; Round Trip, \$18.00

Reservations made at Hotel Lakeview or at the Stage Office.

J. S. FULLER :: :: **MANAGER**



A SPANKING GOOD TEAM should have spanking good harness. Come here and see what we mean by that term. We are showing both single and double harness that is worthy of the best horse or horses ever bred. It is perfect in appearance, perfect in fit and perfect in quality.

E. F. CHENEY

LAKEVIEW OREGON

THE RESULT OF INVESTIGATION

PURE

GUARANTEED
to be equal to any Beer brewed. Bottled and on draught at all leading saloons

Reno Brewing Co., Inc.