

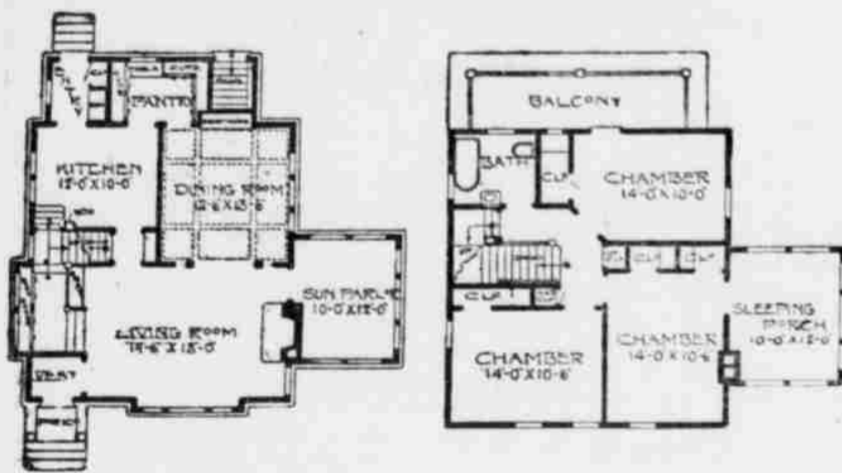
# A WELL ARRANGED COLONIAL.

Design 983, by Glenn L. Saxton, Architect, Minneapolis, Minn.



Copyright, 1912, by Glenn L. Saxton.

PERSPECTIVE VIEW—FROM A PHOTOGRAPH.



FIRST FLOOR PLAN.

SECOND FLOOR PLAN.

This design is remarkable for its allowance of floor space. The house is only twenty-six feet wide and twenty-eight feet deep over the main part. There is a living room across the entire front. The dining room has a beamed ceiling and a sideboard across the rear. The stairway landing is projected out, with built-in bookcases on same. There is a combination from the kitchen, also a grade stairway in the rear. There is a sleeping porch which, by putting a wall bed in, will give the capacity of another room. The sash can be raised and lowered, and there is a radiator so that the room can be heated. Full basement. First story nine feet, second story eight feet. There is room in the third story for two chambers. Cost to build, exclusive of heating and plumbing, \$3,600.

Upon receipt of \$1 the publisher of this paper will supply Saxton's book of plans, entitled "American Dwellings." It contains 254 up to date designs of cottages, bungalows and residences costing from \$1,000 to \$6,000.



"This is My Choice of Duke's Mixture Presents"

Among the many valuable presents now given away with Liggett & Myers Duke's Mixture there is something to suit every taste—and in this all-pleasing satisfaction the presents are exactly like the tobacco itself. For all classes of men like the selected Virginia and North Carolina bright leaf that you get in

*Liggett & Myers*  
**Duke's Mixture**

Now this famous old tobacco will be more popular than ever—for it is now a Liggett & Myers leader, and is equal in quality to any granulated tobacco you can buy. If you haven't smoked Duke's Mixture with the Liggett & Myers name on the bag—try it now. You will like it, for there is no better value anywhere.

For 5c you get one and a half ounces of choice granulated tobacco, unsurpassed by any in quality, and with each sack you get a book of cigarette papers FREE.

### Now About the Free Presents

The coupons now packed with Liggett & Myers Duke's Mixture are good for all sorts of valuable presents. These presents cost you not one penny. The list includes not only smokers' articles—but many desirable presents for women and children—fine fountain pens, umbrellas, cameras, toilet articles, tennis rackets, catcher's gloves and socks, etc.

As a special offer during December and January only, we will send you our new illustrated catalogue of presents FREE. Just send name and address on a postal.

Coupons from Duke's Mixture may be secured with tags from: HORSE SHOE, J. T. TINSLEY'S NATURAL LEAF, RINGER TWIST, coupons from EQUUS, RUGGERS, LIFE, THE DOUBLE, BLUE CUT, PIEDMONT CIGARETTES, CLIX CIGARETTES, and many more coupons issued by us.

Premium Dept.  
*Liggett & Myers Tobacco Co.*  
St. Louis, Mo.



### GOOD ROAD MAXIMS.

Good roads will bring a desire to seek country life.  
Good roads will bring country schools equal to those in the towns.  
We must have harmony in any effort for public improvement.  
Old methods of road construction must be abandoned.  
Bad roads are the sign of backwardness, indolence or a careless citizenship.  
Mud is worse than an invading army.  
Increase of wealth and prosperity immediately follow good roads.  
We cannot afford to have bad roads any longer.  
Every voter should be a preacher, a worker and a fighter for good roads.—Jesse Taylor in *Better Roads*.

### RELATION OF GOOD ROADS TO HOME TRADE.

Farmer Will Buy of Local Merchants if He Can Reach Them.

Again and again it has been pointed out that the growing tendency toward buying by mail from far distant houses, as far as the farmer is concerned, is directly traceable to the fact that he is growing away from the habit of driving into town once or twice a week, particularly on Saturdays visiting the local stores and keeping on friendly terms with the merchants. In other words, the success of the mail-order house depends largely upon its ability to create a feeling of antagonism between the small merchant and his customer.

The Saturday trip to town is one of the foundation stones of merchandising in the country. Take a Saturday afternoon photograph of the main streets in any moderate sized town, and if it shows a shortage of hitching room and a fair mixture of automobiles it is safe to say that local institutions are being supported.

To encourage the farmer to come to town regularly some communities have instituted regular series of Saturday fairs. Instead of having one big celebration during the season, they have some event scheduled for each Saturday during the summer and fall, advertise broadcast throughout the surrounding territory and put on their special sales and special displays to catch the Saturday crowds.

If the farmer is making money he is apt to put some of it into good horses or an automobile, providing the roads are in such shape that he can realize on that kind of investment. But bad roads are the farmer's curse. If he knows that he must travel four or five miles of muck a foot deep to get to town he will stay at home and let the R. F. D. carrier take his order for clothing, groceries or lumber.

Of course the benefits of good roads can be enjoyed only by such towns as those where merchants are progressive, selling good merchandise at reasonable prices. But, given that first requisite, nothing else will help the local merchant keep his farmer customer in line so much as frequent personal contact. Here is where the Saturday trip to town counts in dollars and cents in the dealer's cash drawer.

American business men are learning that "hard times" can be overcome if the right curative measures are employed, and—what is more important—that locally at least business stagnation can be prevented by judicious stimulation of trade. This lesson is rapidly being assimilated by the country's retail merchants and they are coming to appreciate more fully the bearing on their business of such questions as this of good roads. When they finally arrive at some means of co-operative action on such problems and put that co-operation into effect the country will no longer suffer from many present causes of unrest.

Every merchant should study this good roads question until he grasps it fully and until he sees that it is his problem.

### INTEREST IN ROADS GROWS.

Farmers Now Realize the Importance of Better Highways.

When good roads are fully appreciated by farmers—as we believe farmers are now beginning to appreciate their value—farm life will be relieved of much of its loneliness and educational progress will be accelerated.

Not that farmers alone can or should build the roads; the roads are as essential to the business men in the towns as they are to a farming community. But when farmers see the value of good roads they will take the initiative in voting bonds, securing state and federal aid and in giving some of their own time to road construction.

There are many farmers who, although not directly opposed to paying the price of good roads, are nevertheless reluctant in voting bonds and actually doing their own part in building roads. These passive men will become active and the country will be annexed to the city for business reasons.

### Bitumen Bound Roads Durable.

An example of the strength sometimes developed by bitumen bound broken stone roads was furnished recently in the city of Houston, Tex., where storm water washing into an excavation at a street corner undermined a section of bituminous pavement, thirty square feet in area. The pavement was laid about three years ago, and is said to have carried the traffic passing over it without support of any kind.

# Farm and Garden

## TURKEY GROWING TIME.

They'll Be Fine Along About Thanksgiving or Christmas Day.

Turkeys can be grown with less care and attention than any of the domestic fowls except geese. But unfortunately on almost all farms turkeys are allowed the range of the farm, no matter how large, and this causes trouble. In the first place, they are apt to make their nests where they are hard to find, and after the young ones are hatched they will be over too much territory to be good for the little ones before they are a month or two old. After that time unlimited range can be



A FINE SPECIMEN.

allowed unless they are disposed to go into places where they may come to harm, says a correspondent of *Farm Progress*.

To raise turkeys in the way that causes least trouble and always insures the raising of the largest flock is as follows:

First fence off with a small meshed high woven wire fence—say seven or even eight feet high—several acres of land. It is better if some of the land is covered with brush of almost any sort and, if possible, some open land and running water on it. In such inclosures, if there are good places for them to make their nests, the turkey hens can make their own nests and sit on their eggs when laid.

And when they have hatched the hens and young ones can remain in the inclosure and roost there and be fed there till the young ones are three months old. With the same arrangements along these lines we formerly raised large numbers of turkeys at a minimum cost and sold them at a fine profit. After they got half grown and had become edible we trained them to come to the houseyard and roost in a large tree to save them from possible poultry thieves.

We have always fed our very young turkeys on crumbled hard boiled eggs for a few days and afterward well baked corn bread and a little wheat, then cracked corn and finally whole corn.

### THE HOME PARTNER.

A seldom mentioned but most important member of an agricultural partnership is the woman. If she wasn't on the job to keep the household in order and the food supply coming regularly and plentifully, the present day serious disturbance over the high cost of living would be replaced by a starvation panic that would paralyze, for once she quit the job the hired man and the foreman and the "big boss" would all hit the pike in short order.—Long Island Agronomist.

### Gleaned From Law Books.

In the great majority of the states two witnesses are necessary to the validity of the will, in a few states three witnesses are required, and in a few others, where the will is written entirely in the handwriting of the testator, no witnesses are required. Some states require the addresses of witnesses to be inserted after their names, and this is good practice even where not required.

The law of New York and probably of others provides that each owner of two adjoining tracts of land, except when they otherwise agree, shall make and maintain a just and equitable portion of the division fence between such lands unless one of such owners shall choose to let his lands lie open to the use of all animals which may be lawfully upon the other's lands and does not permit any animals lawfully upon his premises to go upon lands so lying open.

The public holidays that have become firmly established as such by custom are Christmas, New Year's, Memorial or Decoration day, Fourth of July and Thanksgiving day. These a man working by the month may claim as holidays without affecting his salary, excepting, of course, in cases of necessity where his services are required on such days in order to avoid or prevent loss to the employer.—Breeder's Gazette.

THE OLDEST ESTABLISHED REALTY FIRM IN SOUTHERN OREGON  
**ONE TO 12,000 ACRES OF LAKE COUNTY BEST LANDS**  
For sale either for stock or agricultural purposes.  
**J. W. MAXWELL & SON**  
LAKEVIEW, OREGON

**J. L. LYONS, D. D. S.**  
Dentist  
Office in Watson's Block, Lakeview, Oregon  
Eight Year's experience in Michigan. Graduate of University of Michigan.

## KOVERALLS

ALL RIGHTS RESERVED FOR CHILDREN 1 to 8 years

LEVI STRAUSS & CO., Mfg. San Francisco

## EVERY DAY IN THE YEAR THROUGH TRAIN TO PORTLAND

Leaves Bend 6:30 A. M.; Redmond 7:15 A. M. Arrives Portland 5:30 P. M.



**DIRECT CONNECTIONS FOR LIMITED TRAINS TO**

Seattle, Tacoma, Spokane, Minneapolis, St. Paul, Chicago, Detroit, Omaha, St. Louis, Kansas City and All Points East and South

Via the North Bank Road, Northern Pacific and Great Northern Railways.

Fares, schedules and details will be supplied on request.

W. D. SKINNER, Gen. Frt. & Pass. Agt. J. H. CORBETT, Agt., Bend, Oregon.

## CONSOLIDATED STAGE CO.

P. M. CORY, Lessee  
LAKEVIEW - OREGON

Operates Stages, carrying United States Mails, Express and Passengers on the following routes:—  
LAKEVIEW TO PLUSH  
KLAMATH FALLS TO LAKEVIEW  
AUTOMOBILES OPERATED IN CONNECTION WITH THE STAGES

	FARES:—	One Way	Round trip
Klamath Falls Route	- - -	\$10.00	\$18.00
Plush Route	- - -	4.00	7.00

OFFICES:—  
Lakeview Plush Klamath Falls  
Stage Office Sullivan Hotel American Hotel

## SHAMROCK STABLES

CON BREEN, Proprietor  
Special Attention to Transient Stock  
Horses Boarded by the Day, Week or Month  
Always Open Phone 571

LAKEVIEW - - - OREGON

## Lakeview Steam Laundry

HARRY C. HUNKER, Prop.  
We give efficient service and do good work. Send your washing and give us a trial.

TELEPHONE No. 732

We are now ready to roll your Barley at any time

## THE BEST

**LAGER BEER AND WHISKIES**

IN TOWN AT THE  
**KENTUCKY SALOON**

POST & KING, PROPRIETORS

A WANT AD IN THE  
**Lake County Examiner**  
WILL BRING RESULTS