

Distinctive Dining

Salem's Finest Restaurant . . .

The Oak Room choice prime ribs
choice steer beef—charcoal broiled
choice steaks, chops
and other specialties

May we Suggest the Oak Room
For Special Holiday Meals
Anniversaries, Wedding Parties
... Anytime Really Good Eating
Will Be Appreciated!

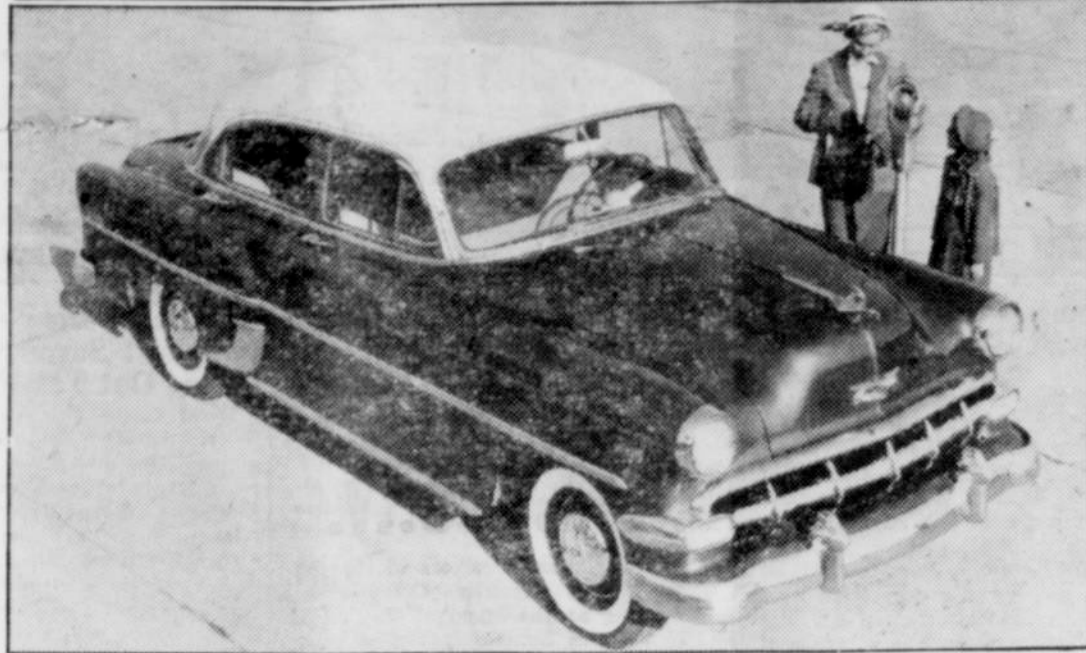
prices \$1.50 and up
open daily except Sunday at 5 p. m.

Marion Lounge
Facilities
Available

Hotel Marion

Downtown Salem Commercial and Ferry

Added Power, Performance Mark Chevrolet



The two-toned four-door sedan in the "210" Series typifies the new beauty and smartness of the Chevrolet line for 1954. The "210" Series is one of three offered by the company in an array of 13 body models. Added power and chassis improvements, extension of the Powerglide automatic transmission option to all cars and luxurious new interiors in striking color harmonies are a few of the principal features.

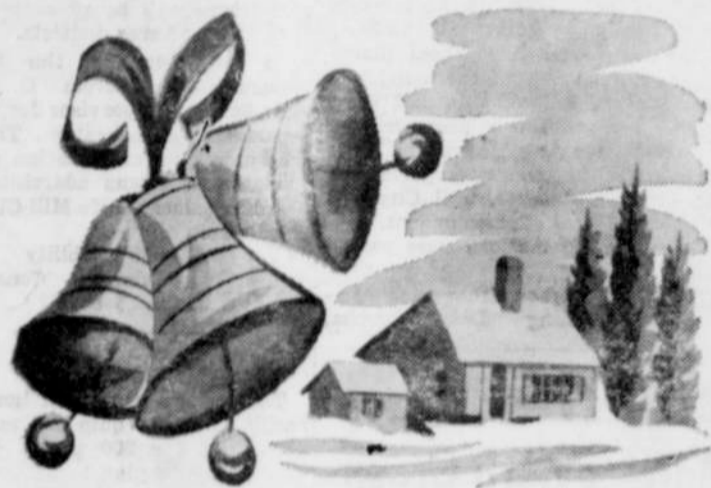


New Year Greetings

We Hail Good
Fortune for You
in 1954

Hirte's Lockers

MILL CITY, OREGON



Happy New Year



Let all the joys
of the holiday season
be yours.

Raleigh Harold Florist
Stayton, Oregon

Highway Death Rate Lower Than Last Year

Oregon traffic deaths during November were tentatively set at 30 today after a preliminary count of all reports available to date, Secretary of State Earl T. Newby, announced. Fatalities totaled 51 in November, of 1952.

The November toll brings the death count for the first eleven months of the year to 348, as compared with 418 at the same time a year ago, Newby said.

"This means that Oregon has an excellent chance to reduce its annual traffic fatalities for the first time in three years," the Secretary pointed out. Death totals have climbed from 356 in 1949 to 427 in 1950, 431 in 1951, and 460 in 1952.

Last month's figures may be swelled by receipt of a delayed report or if persons now listed as injured later succumb, Newby said.

He warned, however, that fatalities alone are not necessarily a true indication of either an improved or a worsened traffic record. He said the number of persons injured and the total number of accidents give a more accurate picture because the difference between a fatal and a non-fatal accident often involves pure chance.

Real headway can be claimed, he said, only if injuries and total accidents also are reduced. Oregon's 1953 record in this regard cannot be assessed until all reports for the entire year are processed.

Phosphorous Needed In Winter Cattle Feeding Says Oregon State College

Oregon cattle men would do well to watch for phosphorous deficiency in their cattle during the winter feeding period, although few cases of extreme deficiency are found in the state, advises Jim Elings, extension animal husbandry specialist at Oregon State College.

The specialist says phosphorous is needed to maintain appetite and rate of growth in young animals. In the milking animals it is necessary for normal milk production. Animals fed on a phosphorous deficient ration have difficulty in utilizing feed properly, particularly proteins, he added.

When cattle are on good pasture or range a phosphorous supplement is not necessary, Elings explains. But when they are fed dry roughage—such as hay and straw—for an extended period of time as during the winter feeding, a supplement is needed and essential.

Elings lists these symptoms to watch for in cattle. Excessive salt consumption—probably above two pounds per head a month should be considered critical. Depraved appetite—evidenced by chewing bones, stick or any non-feed materials. Unthriftiness of any kind during period when cattle should be doing well, stiffness, "walking on eggs" knee walking. Low calf crop percentages when breeding conditions apparently have been good. Light weaning weights on calves or light fall weights on yearlings. Cows going into winter in thin flesh. These light weights cannot be specified except by careful comparison and observations.

Things to watch for in the range are also outlined. Any extended period of dry, cured or short feed. Shortage of browse plants such as winter-fat, sagebrush, greasewood, salt-bush and shadscale. Extended periods on stubble or low grade winter roughages.

To feed phosphorous, the specialist recommends steamed bull meal be made available to animals at all times. If they won't eat straight bull meal, a mixture of 10 to 30 per cent salt should be used.

Examine Fields of Fall Seeded Crops for Slugs

Growers of fall seeded crops are reminded to examine their fields occasionally for slugs.

Seedlings just pushing through the ground are favorite food for slugs, but much larger plants are often are usually cut off at the surface of the ground. Injury to larger plants is recognized by the larger, irregular holes in the leaves, and the trail of sticky mucus left on the plants and along the ground.

A good way to determine if slugs are present is to place a few marked test baits at intervals throughout the field. If slugs are generally found at the baits within the next 24

**DON'T NEED IT?
SELL IT THRU THE
WANT ADS**



We add our
strong and cheerful
voice to the New Year
chorus greeting you.

Hilltop General Store
YOUR MARSHALL WELLS STORE
Phone 2724 Mill City, Oregon

Is it
"Catching"?

• Whether you think an illness is contagious or not—call upon a physician to make sure. Let him make a thorough check of your condition. Then follow his instructions closely. We hope, too, that you will bring the doctor's prescriptions here for careful compounding. Just try us!

Capitol Drug Co.
Salem



May 1954
find your star
rising to
new heights

Ken Golliet
Mehama, Oregon

a joyous
New Year



We hope to add to our
history of service
to you this year.

Gates Furniture
Gates, Oregon