

1953 SANTIAM
SOFTBALL SCHEDULE
First Half

- June 26—
Mill City vs. Kelly's L. S.*
CBI vs. Firemen*
- June 30—
Firemen vs. Kelly's L. S.*
Mill City vs. CBI*
- July 2—
CBI vs. Kelly's L. S.*
Mill City vs. Firemen*
- July 7—
Firemen vs. CBI*
Kelly's L. S. vs. Mill City*
- Second Half League Schedule
- July 9—
CBI vs. Mill City*
Kelly's L. S. vs. CBI*
- July 10—
Firemen vs. Mill City*
Kelly's L. S. vs. CBI*
- July 14—
Mill City vs. Kelly's L. S.*
CBI vs. Firemen*
- July 16—
Firemen vs. Kelly's L. S.*
Mill City vs. CBI*
- July 17—
CBI vs. Kelly's L. S.*
Mill City vs. Firemen*
- July 21—
Firemen vs. CBI*
Kelly's L. S. vs. Mill City*
- July 23—
CBI vs. Mill City*
Kelly's L. S. vs. Firemen*
- July 24—
Firemen vs. Mill City*
Kelly's L. S. vs. CBI*
- July 28—
Mill City vs. Kelly's L. S.*
CBI vs. Firemen*

* Denotes home team.

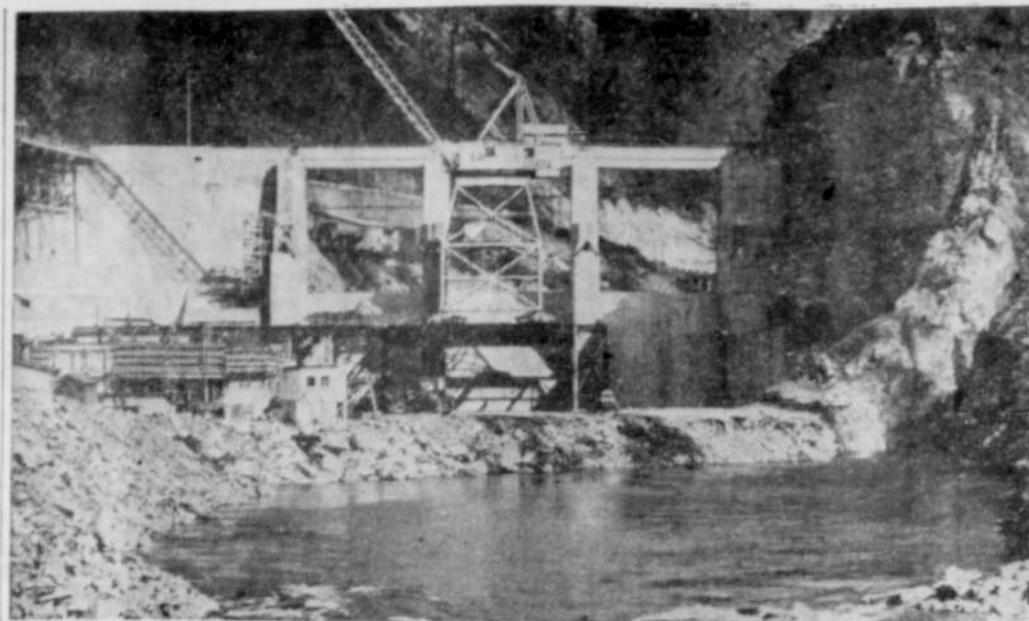
Canyon Avenue—

(Continued from Page 1)

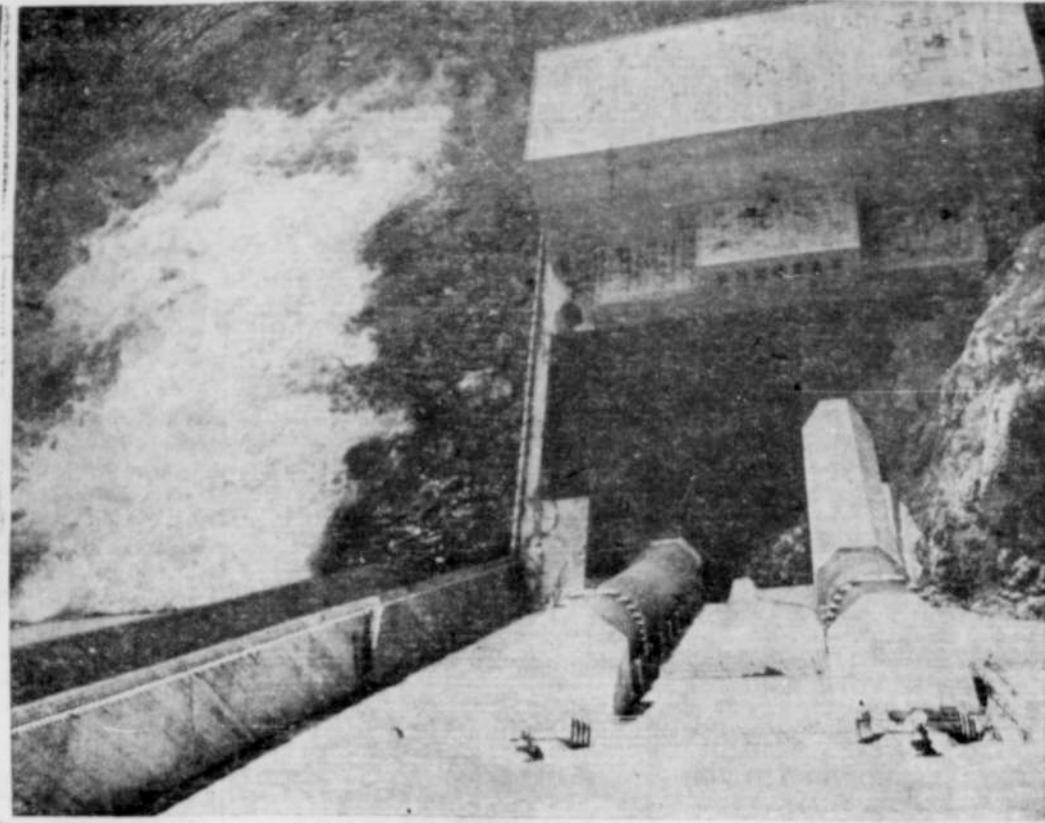
wouldn't take a loss? Also they buy interruptible power cheaper than firm power thus getting a subsidy from our paternal government. The power companies are guaranteed 6% whether you and I have anything left or not, that doesn't seem to be coddling to Mr. Mann or my friend who so graciously sent me this letter clipping.

Why can't we have a little intelligence when we start to criticize some of our government's doings. Yes, Mr. McClure knew what he was talking about at Medford when he criticized McKay—he knows what McKay stands for as well as some of the rest of the people of Oregon and the country know.

McKay believes that "what is good for General Bullmoose is good for the country"—well there are millions of us who do not agree with that philosophy.



The picture on the right looking downward from the roadway on top of the dam gives this view of the penstocks that lead into the powerhouse, and the stilling basin. Each penstock entering the powerhouse is 15 feet in diameter and feeds turbines that operate two generators each producing 50,000 kilowatts. Above is a view of Big Cliff dam designed to re-regulate the fluctuating discharge affected by Detroit dam. Big Cliff will also generate 18,000 kilowatts of power. This dam is 295 feet in length has a reservoir 2.8 miles in length and a total storage of 6450 acre feet. (Photos courtesy Capital Journal)



The great dams of the country were built so that the people could benefit from them and not a few "generous" tax-collecting power companies. Electricity has been delivered and is being delivered to the farms of the country in greater numbers than ever before. The "generals" in our government did not do that job; and, what is more the people of this great country know it. They probably were fooled last year into believing something else, but it won't happen again. Workers and farmers are realizing more and more the common bond that exists between them. They all want security for the time when they are ready to retire just as anybody else seeks security, call it "cradle to the grave ideas" if you wish.

This week I turn over The Mill City Enterprise to my successor, Don Moffatt. It is hard to terminate my job here without many mixed feelings. I have enjoyed every day of my work here, except that I have grown weary and need a job that will allow me more free time to relax or go fishing. I don't feel that I could do a good job any longer without a long rest from the cares a newspaper requires, so for that reason I don't regret going to new fields. My family and I will miss the many wonderful friends we have made here very much, some have left ahead of us but we will be leaving many behind. We hope to come often to renew acquaintances, but past experience has been that new ones take

their places and distance sometimes causes us to forget.

The Moffatts will get the paper out earlier in the week and I suggest you get your copy in not later than Tuesday noon. They are hard working people and if you treat them as well as you have treated us I am sure they will be happy here. We wish them all the prosperity possible in their new undertaking. This Canyon is one of the most beautiful I have ever seen, we hope you will always keep it that way, and that it will continue to prosper.



Also Complete Service on all makes Ranges and Water Heaters
Shux Electric
Phone 2964 STAYTON

Gooch Logging Supply
"Everything for the Logger"
BASSETT'S WELDING SHOP

Phone 1141
Sweet Home, Philomath

Phone 116
Branch Store Lyons

DOG ODDITIES

By Harry Miller, Director, GAINES DOG RESEARCH CENTER

NIPPER, THE BLACK-AND-WHITE DOG WHO LISTENS ATTENTIVELY TO HIS MASTER'S VOICE IN RCA-VICTOR ADVERTISING, LIVED FROM 1884 TO 1895



THE BRAZILIAN ARMY HAS PILOTO, A DOG TRAINED TO LAND WITH THE SKY TROOPS OF THE PARACHUTE CORPS



ONE OF THE WORLD'S OUTSTANDING COLLECTIONS OF DOG PAINTINGS IS THAT OF THE AMERICAN KENNEL CLUB, NEW YORK CITY



© 1953, Gaines Dog Research Center, N. Y. C.

Our Great America ☆ by Woody

ONE FOREST INDUSTRY IN LOUISIANA PLANTED 28,630,000 TREES LAST YEAR. SINCE 1920 THIS COMPANY HAS PLANTED 98,843 ACRES OF TREES

THE FIRST AUTOMOBILE TRIP ACROSS THE UNITED STATES WAS MADE 30 YEARS AGO (JUNE TO AUGUST 1913). HE DROVE FROM SAN FRANCISCO TO NEW YORK REQUIRED 61 DAYS

RAJORBACK DOGS ARE ONE OF THE GREATEST ENEMIES OF LONGLEAF PINE IN THE SOUTH. ONE HOG WILL ROOT OUT AND DESTROY UP TO 600 LITTLE LONGLEAF PINES IN A SINGLE DAY

IT TAKES BETWEEN 4 AND 4.5 SECONDS TO COMPLETE A DOUBLE PLAY FROM THE TIME THE BALL LEAVES THE PITCHER'S HAND UNTIL THE FIRST BASEMAN TAKES THE THROWN FOR THE SECOND OUT. (THIS ALLOWS TIME FOR TWO OTHER INFELICES TO HANDLE THE BALL)

SERVICE THAT SAVES
\$1.25



Lube Job that's Right for Your Car

Our service experts, with long experience in the automotive field, know the chassis layout of every car — of YOUR car! That's why you're assured of a better lube job when you drive up here!

Jack's Richfield Service
On Hiway 222, in East Mill City
MILL CITY

In all these things you want...

Chevrolet's farther ahead than ever!

... in Fisher Body Quality! It's the only Body by Fisher in the low-price field. And now it's even more outstanding in styling, in comfort and conveniences, in quality.

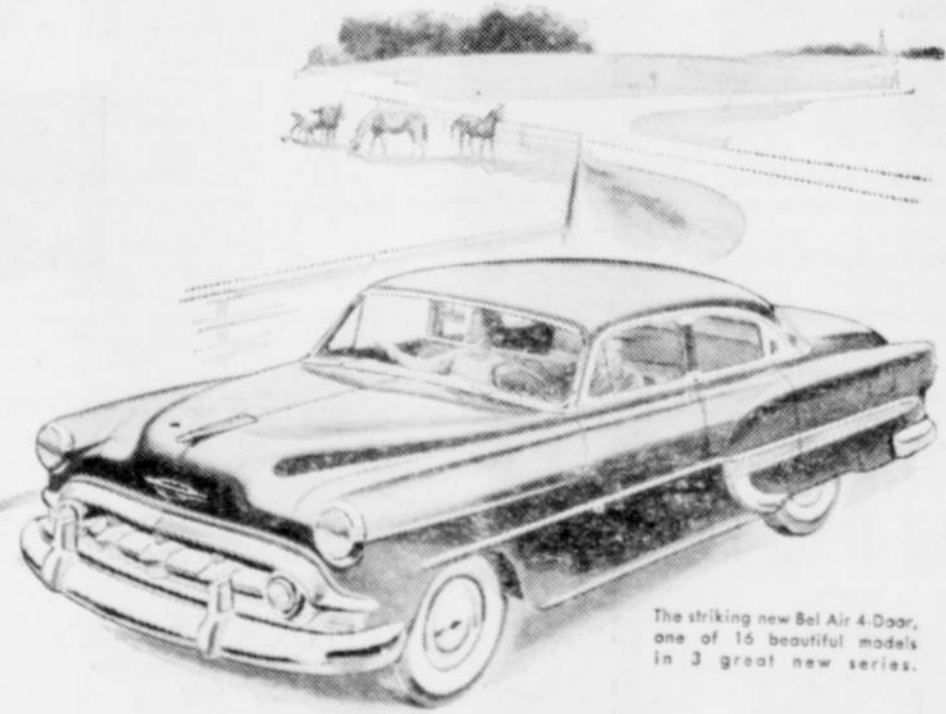
... in High-Compression Power! Most powerful engine in its field with 7.5 to 1 compression ratio—the new 115-h.p. "Blue-Flame" engine with Powerglide.* Advanced 108-h.p. high-compression "Thrifty-King" engine in gearshift models.

... in Powerglide and Power Steering! Powerglide is the newest, most advanced automatic transmission in its field. Power Steering—another Chevrolet exclusive in its field—lets you steer with finger-tip ease.

... in Economy and Value! You go much farther on every gallon of gas (regular gas, at that). You save on over-all costs of operation and upkeep. Chevrolet is again the lowest-priced line in its field!

... in Popularity Leadership! Again this year—as in every single postwar year—more people are buying Chevrolets than any other car. For the first 3 months alone, Chevrolet is over 20% ahead of the second-choice car. Nearly 2 million more people now drive Chevrolets than any other make.

*Optional at extra cost. Combination of Powerglide automatic transmission and 115-h.p. "Blue-Flame" engine available on "Two-Ten" and Bel Air models only. Power Steering available on all models.



The striking new Bel Air 4-Door, one of 16 beautiful models in 3 great new series.



MORE PEOPLE BUY CHEVROLETS THAN ANY OTHER CAR!

YOU LOCAL CHEVROLET DEALER

Gene Teague Chevrolet

Chevrolet Sales and Service

STAYTON, OREGON