

DOG ODDITIES

By Harry Miller, Director, GAINES DOG RESEARCH CENTER

REX, A POINTER OWNED BY HARNESS RACE DRIVER DEL CAMERON, PINEHURST, N.C., WEARS A SPECIAL HARNESS SO HE CAN TAKE HIS PAL MICKEY, A MONKEY, ON RIDES AROUND THE TRACK.



IN SOME PARTS OF SCOTLAND IT IS THE CUSTOM FOR SHEPHERDS TO BRING THEIR COLLIES TO CHURCH WITH THEM ON SUNDAYS.



"RESCUED BY ROVER" AN ENGLISH FILM MADE IN 1904, WAS THE FIRST MOVIE TO STAR A DOG AND SET THE PATTERN FOR LATER DOG ACTING IN THE MOVIES.

© 1951, Gaines Dog Research Center, N. Y. C.

Santa Gives A Party



At least one party for the children this Christmas season, that's traditional. So we set the theme with gay little crepe paper favors and decorative glasses and such. With small fry we stay away from rich, gooey foods. So for our party idea we turn to Santa's sack of toys and come up with those old-time favorites—building blocks.

You make them from good pound cake, preferably a square shaped cake. Get it from your baker or make one up from any good cookbook recipe.

Cut your pound cake into 2-inch cubes and cover with pastel frostings. With a pastry tube in your little right hand, you can letter the blocks any way you like.

Cream Frosting

$\frac{1}{2}$ cup Blue Bonnet Margarine $\frac{1}{4}$ cup cream
4 $\frac{1}{2}$ cups sifted confectioners' sugar $\frac{1}{4}$ teaspoon vanilla extract
food coloring

Cream margarine. Blend in sifted confectioners' sugar, vanilla and enough cream so that frosting spreads smoothly. Divide mixture and color each batch with assorted food colors to obtain pastel tints. Cover cube cookies with frosting and decorate in contrasting shades.

Bright Cranberries And Apples Make A Pretty Christmas Pie



A little pastry Christmas tree tops this delicious fruit pie, permits a peek at the juicy cranberry and apple filling.

Little Jack Horner's Pie was plum, so they say. But it couldn't have been prettier than this Christmas pie in which bright cranberries combine their tart juiciness with mellow apples. Quick-cooking tapioca jells the juice to a just-right consistency without clouding the attractive color. The Christmas tree and the holly leaf edging are easily cut from simple waxed paper patterns.

Holiday Fruit Pie

2 tablespoons quick-cooking tapioca $\frac{1}{2}$ cups cranberries, ground
 $\frac{1}{2}$ cups sugar $\frac{1}{2}$ cups chopped pared apples
 $\frac{1}{4}$ teaspoon salt 1 tablespoon butter

Combine tapioca, sugar, salt, and fruits; let stand 15 minutes, or while preparing pastry.

Line a 9-inch pie pan with half of the pastry rolled $\frac{1}{4}$ inch thick. Trim off excess pastry. Then cut and remove small triangles of pastry from rim to make pointed edge. Roll remaining pastry $\frac{1}{4}$ inch thick and cut out Christmas tree and small holly leaves. (Use patterns cut from waxed paper. Lay on pastry and cut around edge with sharp knife.) Moisten edge of bottom crust with cold water. Then arrange leaves around rim, placing one leaf on each point and pressing together with fingers. Fill pie shell with fruit mixture and dot with butter. Place tree on top of filling. Bake in hot oven (425° F.) 45 minutes, or until syrup boils with heavy bubbles that do not burst.

The Debunker

BY JOHN HARVEY FURBY PH.D.
SOUTH AMERICA IS NOT SOUTH OF NORTH AMERICA



A good look at the map will reveal the startling fact that almost the entire continent of South America lies east of North America. If you went straight south from New York, you would land in the Pacific Ocean just off the west coast of Chili. The westernmost part of South America is almost straight south of the tip of Florida. South America is southeast, not south, of North America.



Hallmark's
Matched Gift
Wrappings mean

one-stop shopping for you
Eye-catching presents
under the tree

Here, in one convenient package, is everything you need for wrapping beautiful gifts—paper, seals, tags, ribbon—designed by famous Hallmark artists. Select yours while stocks are complete.

Edward Williams

"The Home of Hallmark Cards"
330 Court Street Salem, Ore.

MILL CITY

Chas. Dolezal returned to work this week after several days illness.

Mr. and Mrs. A. N. Robinson and daughters spent Tuesday in Salem on business and pleasure.

Mrs. Fred Grimes is spending sometime at the home of her daughter, who is ill at her Scio home.

The Dean Jackson home was the scene of the 3-Links club session this week. Election of officers was held. Elected were Goldie Rambo, president;

DETROIT

By MRS. OPAL WHITE

The Christian church has secured two pictures that will be included on the Christmas program, Dec. 23 at the church. The time will be announced next week. One picture will be a 16 millimeter film entitled, "The Littlest Angel", also two film strips in color entitled "The Holy Child of Bethlehem", and "Why the Littlest Camel Kneled". The public is invited.

There will be a young man from Northwest college who will preach at the Christian church, this Sunday.

Detroit Women's club had a Christmas party last Wednesday evening held in the home economics room of the high school.

There was music and gift exchange. Bingo was played with the members again exchanging gifts. Husbands were invited.

The Leslie Umfleet's were Saturday visitors at the Jess Brown home. They are the parents of Mrs. Brown and they also took one of the children home with them for a visit.

Mrs. Margaret Rasnick received word of the death of her mother Tuesday evening of last week. Mr. and Mrs. Rasnick drove to Seattle Wednesday and returned Sunday. Mrs. Rasnick is the third grade teacher.

Stanley Whipple, coach of Detroit school was ill Monday and Tuesday and was confined to his home.

Mrs. Opal Leeming left Thursday afternoon for Wichita, Tex. She received word that her father suffered a heart attack.

Mrs. Mildred White and children, Curtis and Lyman, arrived from Santa Anna, Calif., Tuesday to visit the Otis White family over the Christmas holidays.

Mrs. John Osborne of Mongold was taken to Salem Memorial hospital Monday to undergo surgery.

The 7th and 8th grade boys played Gates last week with a score of 32-16 in favor of Detroit. A volleyball game with 7th and 8th grade girls also played the Gates girls. After the game the 7th and 8th grade girls play the Detroit high school girls. Mrs. Modena Surgeon is the coach for the grade school and Miss Kazi Inuzuka is coach for the high school girls.

Mable Veteto, vice president, and Jennie Smith, secretary. Plans were made for a Christmas party. New robes for the Rebekah lodge initiation team is a goal of the group.

Mill City high school girls athletic association has as the theme of its Saturday, Dec. 22, Christmas formal, "Silver Bells". The dance will be held in the high school auditorium. Barbara Barton, vice president of the group, is the general chairman of the event. Miss Freda Thayer, high school teacher, is adviser to the girls. Miss Lela Kelly is president of the GAA; she has put all members of the group into the work of preparing for the annual Christmas affair.

Robert Zambrowski takes Frank Dickie's place on the local SP set-up. Dickie held the position of car inspector for the SP. Dickie is retiring. Zambrowski is reportedly an excellent softball man. The Zambrowski family comes to Mill City from Albany.

Wednesday evening Mrs. Caughey entertained the Friendship class of the First Presbyterian church at her home. Mrs. Chas. Kelly led the devotions. The class studied the "First Christian", from the Book of Luke. Mrs. Herbert Schroeder was the leader. A lunch was served. Members present were Mrs. Chas. Kelly, Mrs. Vernon Todd, Mrs. Lora Kelly, Mrs. Maxine Hill, Mrs. O. Mikkelsen, Mrs. Freda Thayer, Mrs. Arthur LeCours, Mrs. P. Stover, and Mrs. Barbara Yarnell.

Mr. and Mrs. Ernest Brown and daughter Lynn went to Salem Monday Christmas shopping.

Better than ever!

light...and lively, too!

Blitz Weinhard BEER

say: **"BLITZ WEINHARD FOR ME!"**

BLITZ WEINHARD COMPANY • PORTLAND, OREGON

Quality job printing at The Mill City Enterprise

Gooch Logging Supply

"Everything for the Logger"

BASSETT'S WELDING SHOP

Phone 1141

Sweet Home, Philomath

Phone 156

Branch Store Lyons

Shuffleboard

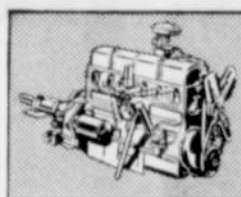
Good Music

MEANDER INN

Where Friends Meet

On Highway 222, Linn County Side
MILL CITY

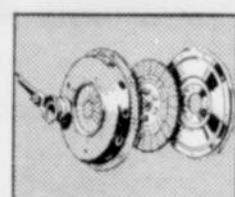
George "Sparky" Ditter



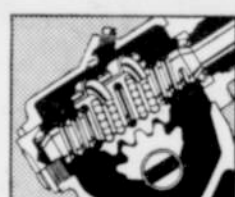
THRIFTIER OPERATION



REDUCED MAINTENANCE



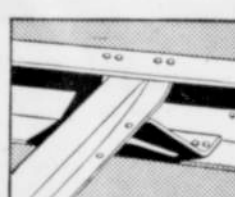
FEWER REPLACEMENTS



FEWER ADJUSTMENTS



TROUBLE-FREE DESIGN



LESS DEPRECIATION

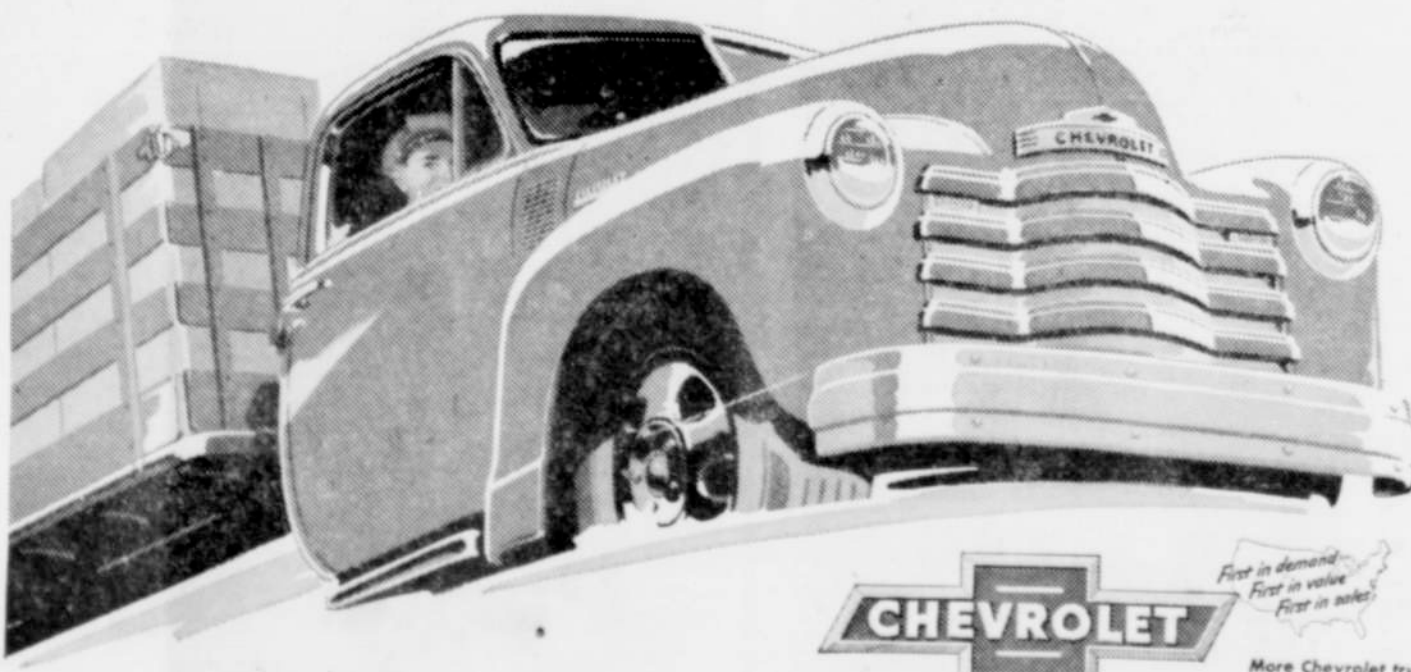
lower hauling costs

engineered in!

... to do more work for your money

America has made Chevrolet Advance-Design trucks its No. 1 choice, because Chevrolet trucks consistently do more work for the money... cut hauling costs. This outstanding economy stems from Chevrolet's great engineered-in features—powerful valve-in-head engine,

durable channel-type frame, rugged rear axle and dozens of other money-saving advantages. Follow the lead of America's largest group of truck owners. Choose a Chevrolet Advance-Design Truck and save! Come in and see us—and get the right truck for your job.



(Continuation of standard equipment and trim illustrated is dependent on availability of material.)



ADVANCE-DESIGN TRUCKS

YOUR LOCAL CHEVROLET DEALER

Gene Teague Chevrolet

Phone 2344

Stayton, Ore.