

Sublimity Banquet--

(Continued from Page 1)

S. R. Overholser, resident engineer for Detroit and Big Cliff dams, revealed facts about the progress of these dams and their effect upon the industrial development of the North Santiam region. Guy N. Hickok, representing the First National Bank, Salem branch, gave a sparkling address that added much flavor to the spirit of the important banquet. F. C. Nelson, Southern Pacific representative, pointedly stated his company's interest in the continued industrial expansion of this rich northwest empire.

Presented before the banquet were honored guests Z. E. Merrill and R. C. Sipe, M.S.P.Co.; L. H. Hopkins and H. M. Williamson, Southern Pacific; Alan R. Mellis, Portland chamber of commerce; Judge Joseph B. Felton, Salem chamber of commerce; Rex Hartley, Marion county judge; and John F. Durr, Civic Service consultant. Leonard Hendricks entertained those attending the Sublimity banquet with a piano selection.

Tax Consultant Auditor

W. N. SIMMONS PUBLIC ACCOUNTANT

Bookkeeping, Accounting and Tax Service

Corner 3rd & Marion
STAYTON, ORE.

Telephone 4114 P. O. Box 1321

Rubber Boot Work Full Soles and Heels

BEFORE BUYING SHOES
SEE THE MASON LINE

Chuck's Shoe Shop

CHARLES UMPHRESS, Prop.

Open 7 A.M. to 7 P.M.

Forest Products Market Report

Demand continued very strong for Willamette Valley farm forest products during the past week, according to the weekly farm forest products market report prepared from data supplied by State Farm Foresters to the OSC extension service.

The strong demand widened the price range on second-growth logs and upped some pole prices. Rains slowed operations in some places but deliveries generally continued heavy.

Douglas Fir Saw Logs:
Valley mills paid mostly \$34 to \$44 a thousand board feet for second-growth Douglas fir saw logs 12 feet or more in length, during the week ending October 13. Mills in the northwestern part of the valley paid \$41 to \$47 a thousand for long logs with 12-inch minimum diameters. Some small mills raised prices on 8-foot logs. From \$15 to \$18 a cord or \$32 to \$40 a thousand was paid for 8-foot logs 6 inches in diameter. Mills were taking logs as fast as deliveries could be made.

Old-growth fir saw logs brought \$36 to \$46 a thousand in the southern part of the Valley and \$40 to \$60 in the central part. Plywood peeler logs ranged from \$75 to \$110 a thousand, depending on quality and location.

Pulpwood:
Most pulp and paper mills took 8-foot spruce, hemlock and true fir logs with bark on at \$17 a cord. Split and peeled true fir brought \$19 and cottonwood \$16 in the central area.

Poles and Piling:
Prices for 40 to 50 foot fir poles some valley yards during the past week were raised 1 to 3 cents a foot at week. Lists ranged from 13 to 16 cents a foot for 40-foot barksies and from 22 to 26 cents on 50-foot lengths. Poles 20 feet long sold down to 7 cents a foot with bark, while lengths 60 feet and over ranged from 35 to 43 cents a foot.

Hardwood Logs:
Hardwood log prices were unchanged at \$35 to \$40 in the southern part of the Valley. Oak, alder, ash, maple, and chinquapin logs at least 10 inches in diameter and 8 feet long brought \$37.50 a thousand, but outlets were limited. Cottonwood logs were taken at \$24 to \$28 by a few mills.

Other Forest Products:
Hop growers in the central part of the Valley were paying \$1.75 to \$2.00 each for 20-foot cedar poles. Douglas

Marines Want More College Graduates

College graduates, who can meet certain other requirements, may now make application for the Marine Corps Candidate Course leading to a Second Lieutenant's commission in the U. S. Marine Corps Reserve, Colonel Harvey S. Walseth, Director, 13th Marine Corps Reserve District, announced this week.

The Marine Corps Candidate Course consists of an intensive ten-week training period at Quantico, Virginia. Upon successful completion of the course the man, who trains as a Private, is appointed a Second Lieutenant in the Marine Corps Reserve.

Colonel Walseth said that during the training period, each man is furnished transportation, quarters, meals, uniforms and medical and dental care—at no cost. In addition, each man receives \$75.00 a month—plus cash allowance for dependents.

Officer Procurement headquarters in the Northwest is located at the U. S. Marine Corps District Headquarters Recruiting Station, Room 208, New U. S. Court House, S. W., Broadway and Main, Portland, Oregon. Application may be made there, or application forms may be obtained by writing direct to the Commandant, U. S. Marine Corps, Washington, D. C.

Bob Hope Could Be--

(Continued from Page 1)

in the United States and foreign countries, and I personally invite servicemen stationed overseas to participate. Should one of our overseas troops hit the jackpot, the premiere of 'My Favorite Spy' will be held wherever the winner is stationed. And I'll bring the film, in person, if you don't mind.

"Y. Frank Freeman, my boss standing over there with the snake whip in hand, says, 'Tell 'em all letters should be mailed to Bob Hope Contest, Hollywood 38, California. The letters will be judged and the winner selected by a panel of celebrities.'

"Come on, gang, let's get going. If you win, I'll help you sweep up when it's over.

Thanks for the Memory,
BOB HOPE"

fir was being taken at \$1.25 to \$1.50 a pole. Buyers continued to pay 15 to 16 cents a pound for dry cascara bark and 12 cents a bunch for ferns during the last week.

What we most need is the prayer for fervent desire for growth in grace, expressed in patience, meekness, love and good deeds.—Mary Baker Eddy.

Henry and His Golden Horse Featured Here

Pat Henry and his Golden Horse enthralled the football audience at Allen Field, Thursday, night during half-time. Henry and his fine palomino horse are on their way to New York and vaudeville. Stewart's Grocery and the Mill City State Bank sponsored the appearance of the expert horseman and his beautiful palomino. Henry's trained steed can lasso a calf by himself.

Quality job printing at
The Mill City Enterprise



NOW SHAVING'S QUICKER
...EASIER! GET A

Gillette

SUPER-SPEED
ONE-PIECE
RAZOR



USED OIL CIRCULATORS

\$20.00

Guaranteed

JUDSON'S

279 N. Commercial
SALEM

NEW 1951 WILLYS STATION WAGONS

Pickups, Panels
Jeeps

2 and 4 Wheel Drive
Immediate Delivery

ELSNER MOTOR CO.

352 N. High Salem, Ore.

NO EXTRA COST!



This Automatic
Push Button
G-E
Range-
Plus
this Original
Fryrite
DEEP FRYER

BOTH FOR THE PRICE OF THE G-E RANGE ALONE

Not one red cent extra for the original automatic Fryrite deep fryer when you buy this deluxe G-E Stratoliner Range now!

Use the versatile Fryrite for exciting new-taste dishes of chicken, sea foods, meats, vegetables and desserts. Large family-size cooking capacity, automatic temperature control. And it's yours now, at no extra cost, with this amazing automatic G-E Range.

And what a range! All the joys of push-button "Speed Cooking", with every feature you could want for easy, fast, clean, economical electric cooking.

Come in today for a thrilling demonstration—and take advantage of this special offer.

Pay only
\$5.25
a week

BOTH ONLY \$389.95

Mill City Appliance Store

PHONE MILL CITY 2215



Like to be Sitting Pretty?

You don't have to be "in the chips" to be sitting pretty these days. Chair Car seats on S.P.'s great new trains offer the best sitting there is, at the lowest rates around. You recline in luxurious ease, while the engineer drives you. (On long trips, leg rests provide a chaise-longue effect.)

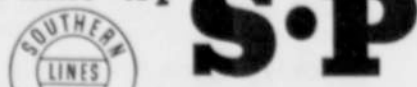
Chair Cars on Southern Pacific's modern streamliners have been built with your comfort the first consideration. Dust-free, draft-free air-conditioning. No-glare fluorescent lighting. Soft-as-a-cloud foam-rubber seats. Lots of leg room and move-around room. Extra large windows. Feather-touch doors. Spacious washrooms.

That's why Chair Cars on S. P. streamliners are the most luxurious form of all low-cost transportation.

DAYLIGHTS . . . San Francisco, Oakland, Sacramento-Los Angeles
STARLIGHT . . . San Francisco-Los Angeles
OVERLAND, CITY OF SAN FRANCISCO . . . San Francisco-Oakland-Chicago
SNARSTA DAYLIGHT . . . San Francisco-Oakland-Portland
SUNSET LIMITED . . . Los Angeles-New Orleans
GOLDEN STATE . . . Los Angeles-Chicago



Next time-try



AMERICA'S MOST MODERN TRAINS

A. E. ARMSTRONG, Agent
Phone 1805

Pacific TIRES

Up to

\$5

For Your

OLD TIRE

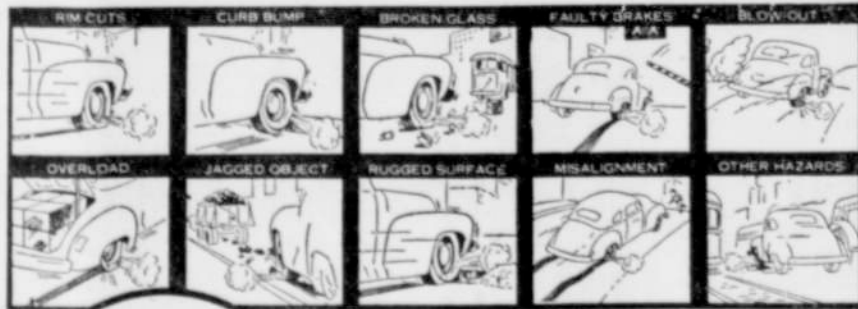
If Recappable

On Trade-in for New Pacifics
(most sizes immediately available)



DOUBLE Plus
GUARANTEE

18 Months Written GUARANTEE against...



LIFETIME GUARANTEE
This tire is guaranteed against defect in workmanship and material without limitation as to time or mileage. If the tire fails AT ANY TIME and examination shows that the failure was due to defect in workmanship or material, a reasonable allowance will be made on the purchase of a new tire.

Get Ready for Safe
Winter Driving!

EXCHANGE THOSE OLD
SMOOTHIES FOR NEW
PACIFICS.

TAKE ADVANTAGE OF
THIS SPECIAL
TRADE-IN OFFER!

Convenient Terms

Your Recappable Trade-ins will
serve as Down Payment

Come In Today!

"Saving YOUR Tires Is OUR Business"



Philippi Tire Service

MEHAMA, OREGON

PHONE: LYONS 143