

THE DAILY REPORTER.

VOL. III. NO. 82

McMINNVILLE, OREGON, SATURDAY, AUGUST 13, 1887.

PRICE TWO CENTS.

EDUCATIONAL.

WILLAMETTE UNIVERSITY, SALEM, OREGON.



—DEPARTMENTS.—

- I.—College of Liberal Arts.
- II.—College of Medicine; Dr. E. P. Frazer, dean.
- III.—College of Law; Judge Wm. Ramsey, dean.
- IV.—Woman's College; Mrs. C. G. Hawley, dean.
- V.—Conservatory of Music; Z. M. Parvin, director.
- VI.—University Academy.
- VII.—Art Department; Miss Marie Craig, instructor.

300 STUDENTS. 60 GRADUATES.

Thirty Teachers. Day board for young men, \$1.50 per week.

Ladies' board in Woman's College hall, \$2.50 with an unheated room; \$3.50 with nicely furnished room. First term begins September 5. Catalogues and information sent free.

Address, THOS. VANSCOY, Salem, Oregon.

FRIENDS PACIFIC ACADEMY.

Newberg, Yamhill County, Oregon.



First term 1887 begins September 12. Total expense for tuition, board and lodging for one year \$110. Instruction thorough. Especial attention given to physical culture and health of students. Moral and religious influences carefully guarded. No saloons nearer than eight miles. Situated on the P. & W. V. R. R., 20 miles from Portland, and one mile from Rogers' landing on the Willamette river.

H. J. MINTHORN, Supt.
Send for Catalogue.

BOOTS AND SHOES



Hear ye, people of Yamhill county. I will sell my fine stock of BOOTS and SHOES now on hand at ten per cent discount, and my

Large, New and Elegant Stock

Just Received, will be sold at a profit of ten per cent. There is ONLY One BOOT and SHOE store in McMinnville where you can get your moneys worth, and that is of Deibschneid's. Come and see too. Next door to Yamhill County bank.

F. DEIBSCHNEIDER.

McMinnville LIVERY FEED AND SALE STABLES



LOGAN BROS. & HENDERSON.

Proprietors—
Fine Carriages, Bachelors and Saddle Horses.
And everything in the Livery line.
In good shape
At Reasonable Rates.

City Stables.



HENDERSON BROS.,

Ample room to care for 1000. Livery teams at reasonable rates. Any where in Oregon. New stable Third St., McMinnville.

KOLM'S BUSINESS COLLEGE

(Formerly Shorthand and type-writing School.)
Portland, Oregon.
A complete business course, penmanship, short-hand, type-writing, business correspondence, etc., taught day and evening. Shorthand lessons by mail. Address for catalogue: G. HOLM, Principal, in 20-6m.

Family Grocery Store.

Third Street, McMinnville, Oregon.

J. Harv. Henderson,

(Successor to L. ROOT.)
Dealer in
All fresh Goods, Groceries, Flour, Bacon, Glassware, and
Goods delivered
in the

"OREGON AS IT IS."

McMINNVILLE, population 1800, the business center of Yamhill county, lies fifty miles south-west of Portland on the Oregon and California railroad. It is situated in the midst of the finest agricultural region in Oregon, and is widely known as the Farmers Paradise of the Pacific slope. The population of the county is put at 10,000 which yearly receives large additions. There are thousands of acres of valuable land to be had at prices ranging from \$5 to \$50 per acre. All this land lies within easy access of steamboat and railroads. The climate is mild and agreeable. The winter months are mostly given to rain. The Pacific ocean, fifty miles west of McMinnville, is reached over toll roads, and furnishes a most invigorating place to while away the hot summer months of July and August.

THE FIRE DEPARTMENT.
This city boasts of a well organized, well equipped volunteer fire department.

PAST, PRESENT AND FUTURE.
The city is well lighted on its principal business avenues. The rapid strides being made by McMinnville, in advancing to a prominent place among the live towns of the northwest, is giving a new life to its enterprising merchants, and the bright star of Hope beams brilliantly down upon us. There is a better feeling throughout the country than for years past. The farmers are hopeful and happy. The indications for a good crop this year were never better, collections are easier, money circulates more freely and long credits appear to be a thing of the past.

FOOT NOTES.
Our eastern friends are informed that in close proximity to McMinnville, there are some of the finest farms for sale that can be found on the Pacific coast. The reason that they are for sale is, that the owners have more land than they need, consequently they are willing to sell and settle up the country.

The city as a summer resort furnishes better inducements than offered by any other place in Oregon. You can get first-class accommodations at the hotels for a reasonable price. Within five hours drive over picturesque country roads, you are in the heart of the Coast range, where angling, hunting and prospecting can be indulged in to your hearts content. You can take your tent and get on the stage and away you go to the grand old ocean where for \$5 per week you can roll in primeval luxuries and dirt, and return to your homes recuperated in health and spirits. The best way to reach the ocean and the proper time to start is about the first of July. Purchase your tickets for McMinnville, then take the stage via Grand Ronde valley, to the camping grounds, or turn your attention to the Little Nestucca climb those towering mountains and be repaid with a panoramic view from Nature's hand that casts into the shadow all landscapes seen in art galleries. Stretching out before the observer lays the great valley of the Willamette. Here and there appear upon the green surface towns and villages, with great fields of waving grain whose tawny coloring vies harmoniously with the deep foliage of the trees. On all sides rise majestically heavenward the snow-crowned kings of Oregon, shooting upward into the very dome of blue vaults above.

LAFAYETTE—POPULATION 300.
Lafayette, the county seat of Yamhill county, situated in the north-eastern part of the county, is five miles from McMinnville as the roads go, and thirty miles from Portland via the narrow gauge.

Lafayette has long been hampered by having no direct communication with the world, and her progress somewhat retarded. Better things are now expected. The town needs only to waken from its lethargy to arrive at a busy, bustling village. Its merchants and enterprising citizens must recognize the fact that the best advertisement of a wide-awake town is its local paper. They must not expect any live man to put capital into a place where there is no effort made to attract public attention. Live business men want live towns. The future prosperity of Lafayette depends mainly upon the amount of energy put forth by her representative men and women.

CARLTON—POPULATION 100.
Carlton, seven miles north of McMinnville, is a small town on the Oregon and California railroad. Its principal industry is shipping wheat.

This village is situated in the heart of a large farming community. The place itself is more of a shipping point than anything. There are three commodious grain warehouses. One of them stored 50,000 bushels of wheat last season. Barnekooff & Co. have a large granary here, and also one at McMinnville.

The village boasts of a good grocery store, an agricultural warehouse, an apothecary shop, good hotel, boot and shoe maker, a blacksmith shop, two contractors and builders, also one large general store.

Co. operate a line of tri-weekly boats to this place. This town has been, until the completion of the narrow gauge to Elk Rock, the shipping point of all its freight.

Dayton's business representation comprises six stores, one hotel, two blacksmith and carriage shops, four churches, neat and attractive, large warehouses owned by Capt. W. S. Powell and J. W. Ingle, capacity 150,000 bushels; enjoys good schools; has a lodge of Odd Fellows, and Good Templars, also a prominent feature not to be overlooked, a most beautiful and attractive city park. The only one that we are aware of in Oregon.

Dayton is three miles from Lafayette the county seat, and seven miles from McMinnville. Good roads lead to all the principal points in the county.

WHEATLAND—POPULATION 100.
Is fifteen miles south-east of McMinnville on the Willamette river, and is a shipping point of considerable importance. The average of wheat handled yearly amounts to about 200,000 bushels. This embraces Wheatland and vicinity. There is a daily line of steamers to this port, thus affording every opportunity to the farmers to ship their wheat at a low rate, either to Portland or San Francisco via Yaquina. Tributary to this section of the county is some of the finest farming lands to be found anywhere. Here, also, is produced magnificent fruit, especially peaches.

There is one general store, one hotel, one blacksmith and carriage shop, one drug store, church, school and a large warehouse.

NEWBERG—POPULATION 150.
This is a new settlement made up principally of Friends, who are as busy as a hive of bees in making this place the coming school town of the west side counties. The Friends have a large academy, handsome in exterior appearance with a commodious boarding hall attached. There are several handsome and costly residences here.

Students are offered fine facilities to acquire a good education at a small cost.

There are no saloons in this peaceful place.
Chehalis valley pays tribute to this little town, cooily nestling at the foot of the Chehalis range of mountains. The town has two general stores, a blacksmith and carriage shop, dress-making establishment, etc., also one large sawmill and grist-mill, including warehouses, etc.

WILLAMINA—POPULATION 150.
Willamina, twenty miles south-west of McMinnville, near the foothills of the Coast range, is the most attractive rural town in the county. The stage road crosses the South fork of the Yamhill river at this place, on its way to the Grand Ronde valley.

There are two general stores, one saw mill, one large grist mill, two hotels, good schools, church, blacksmith shops, etc. The valley for ten miles around draws its supplies principally from this place. There is considerable grain raised higher up the valley. The farmers have to haul their grain to Sheridan, a distance of five miles, in order to get it to market. Ultimately the narrow gauge will tap this section of country and be amply repaid by the farmers.

AMITY—POPULATION 200.
The town of Amity rests upon a level plain, near the Bald hills, that lie between it and the Willamette river. Salt creek, a small stream, passes the town on the left. In the summer time Amity presents a cheerful appearance.

The business portion of Amity comprises one large agricultural warehouse, four general stores, one drug store, one livery stable, one public hall, two blacksmith shops, one carriage shop, two churches, a good public school with seventy pupils enrolled, and one grain warehouse.

Amity is a shipping town for farmers in this vicinity. It is situated seven miles south of McMinnville on the Oregon and California railroad. Considerable grain is raised in this neighborhood.

NORTH YAMHILL—POPULATION 250.
This town, situated eleven miles north of McMinnville, and three-fourths of a mile west of the Oregon and California railroad, is the first town in Yamhill county coming south. It is a vast grain growing district and for miles and miles the eye beholds a sea of waving grain.

There are two general stores, one drug store, one tin shop, baker shop, blacksmith and carriage factory, a good public hall, church, schools and secret societies.

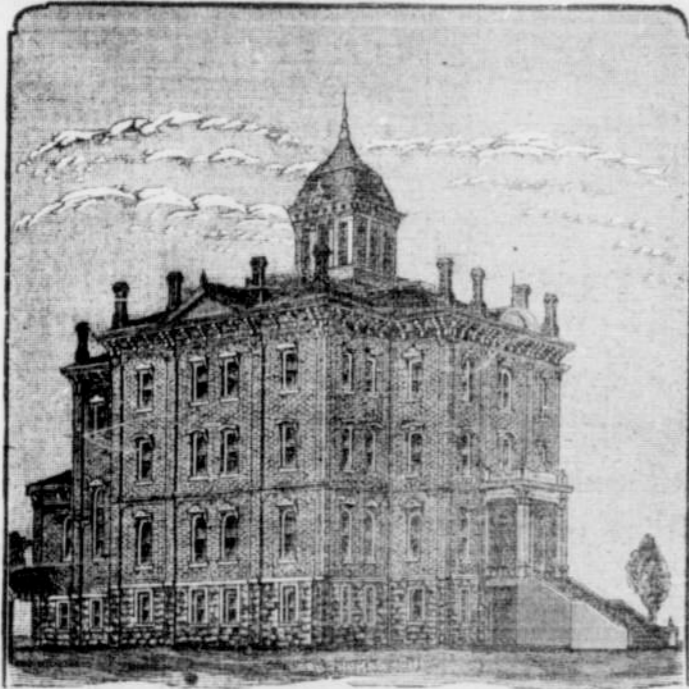
SHERIDAN—POPULATION 250,
Is located on the west bank of the Yamhill river, or more correctly speaking, both sides. Since the narrow gauge road has made this place the southern terminus, the town has worked toward the eastern side.

There are half a dozen large grain warehouses, a three-story flouring mill, a handsome depot, good hotels, pleasant homes, half a dozen well-stocked stores, two livery stables, drug store, furniture factory, boot and shoe makers, public halls, school, churches and secret societies.

BELLEVEUE.
Five miles south of McMinnville in the heart of a large agricultural region, consists of a church, school house and general merchandise store. The land is entirely devoted to grain. E.L.E.W.

Subscribe for the Reporter.

McMinnville * College,



McMINNVILLE, OREGON.

FIRST TERM BEGINS SEPTEMBER 7, 1887.

Tuition in Preparatory Department	\$ 5 00
" " in Academic	8 00
" " in Collegiate	11 00

Instruction Thorough and Practical.
Board will be furnished at the College Building for about \$2 75 per week. Those who prefer can obtain board in private families at from \$2 75 to \$4 00 per week.

Catalogues giving full information sent free.
Address, A. C. CHANDLER, Secretary of Board, McMinnville, Oregon.
aug12-m3

J. F. CALBREATH. F. E. GOUCHER.

Calbreath & Goucher.

PHYSICIANS AND SURGEONS.

McMINNVILLE. ORGON.

(Office over Braly's bank.)

McMinnville Baths.

Hair Cutting, Shaving and Shampooing Parlor.

15c SHAVING 15c.

C. H. FLEMING, Proprietor.

(Successor to A. C. Wyndham.)

Ladies and children's work a specialty.

I have just added to my parlor the largest and finest stock of cigars ever in this city. Try them.

\$25,000—to loan on approved mortgages. Apply at the First National Bank.

SAMUEL GOFF,



Late of Independence, having purchased the

TEAMS AND TRUCKS

Of Logan Bros. & Henderson, offers his services in that line to the public, and will

Guarantee Satisfaction

To all who favor him with their patronage. He will keep a wagon specially adapted to the delivery of parcels, trunks, etc., for the convenience of the public. Orders left at the stable will be promptly attended to at reasonable rates.