

# CASCADE LOCKS CHRONICLE

and The Bonneville Dam Chronicle

Vol. VI, No. 19

CASCADE LOCKS

BONNEVILLE

FRIDAY, AUGUST 18, 1939

## Bids Called For Power Lines North

First steps were taken toward erection of the electrical network that will take Bonneville power into the Puget Sound area. Acting Administrator F. A. Banks called for bids on the 220,000-volt line across Clark and Cowlitz counties to connect the Bonneville substation at Vancouver with Kelso. Bids will be opened September 13.

One hundred and ninety-one tall steel towers from 50 to 70 feet in height will be erected during the winter and spring months to carry the 123 miles of power cable over the 41-mile right-of-way between the two cities.

### Several Hundred Work

A force of several hundred men will be required to build the towers and footings and string the conductor by late spring in 1940—the time specified by Bonneville engineers for completion.

The new line, running from Vancouver in a general northwesterly direction, will pass within 1 1/2 miles of La Center, and within eight miles of Kalama. Smaller communities within a short distance of the route include Salmon Creek, Pleasant Valley, Good Hope, Pioneer, Highland and Martin's Bluff.

Completion of the line will permit the Bonneville super-power grid to carry Columbia River energy into the well-settled farm areas of Southwestern Washington, such as its Vancouver-Eugene line, now nearly finished, taps a similar area in Western Oregon. Both lines will stem from Bonneville's main sub-station at Ampere, "jumping off place" for the high voltage power brought west from Bonneville dam 40 miles up the Columbia.

### Kelso Diversion Point

The Kelso terminus of the new line, in its turn, will act as a diversion point for power which will be sent north to Chehalis and the Puget Sound area, and ultimately, west to Aberdeen, Cathlamet and nearby communities. Plans are being drawn now by Bonneville engineers for a substation at Kelso to handle the big power load.

Large quantities of steel, cable and other materials purchased by Bonneville have been stored at Ampere and Woodland for use by the contractor. The construction contract on which bids are to be opened next month covers the labor of construction and the hauling of materials.

### To Be Hosts

The Epworth League of Cascade Locks will play host to all the different young people's group in the county and several from Portland and vicinity Sunday evening, Aug. 20, at 7:30 p. m.

The different groups will be entertained with a musical concert presented by some noted musicians from Pacific College, Newberg, Ore.

The performers are Miss Irene Swanson, symphonic violinist; Miss Alfrieda Martin, soprano soloist; Miss Helen Schmetzer, contralto soloist; Miss Vera Hicks, comic reader; Miss Esther Weesner. The girls trio of radio fame will sing. This concert is to be free with a silver offering. The guest artist, Miss Swanson, is a member of the Portland Symphony Orchestra and has just returned from a concert tour.

### 300 Attend Picnic

The Hood River County Odd Fellows Picnic Association with three hundred strong held their annual picnic on the government grounds at Cascades Locks last Sunday.

The association made up of the lodges of the county had a full program and plenty of ice cream and coffee for all. Several grand officers were present for the festivities, as well as representatives from lodges all over the state.

### CASCADE LOCKS WEATHER (U. S. F. S.)

	Max.	Min.
Aug. 9.....	98	
Aug. 10.....	89	
Aug. 11.....	77	
Aug. 12.....	82	
Aug. 13.....	79	
Aug. 14.....	76	
Aug. 15.....	79	

### PUBLIC NOTICE

Application has been made to this office by The Pacific Telephone and Telegraph Company of Portland, Oregon, for permission to revise plans to lay a submarine cable in the Columbia River at Stevenson, Washington.

Maps showing exact location and extent of the proposed work may be seen at the office of the District Engineer, Bonneville, Oregon.

Any objection from the standpoint of navigation should be received at this office not later than August 26, 1939.

R. E. M. Des Isles,  
Captain, Corps of Engineers,  
Acting District Engineer.

## PUD's to Join In Buying Light Systems

Formation of a people's utility district in Wasco county by a vote of 1735 to 1194 in Tuesday's election resulted Wednesday in a proposal for the P. U. D.'s of Hood River county, Wasco county and Klickitat county, across the Columbia river, to join in an effort to acquire facilities of the Pacific Power & Light company.

Although no official step had yet been taken, tentative plans were advanced in Hood River's rural P. U. D. for joint action. The district, which does not include the city of Hood River, had been awaiting the Wasco county vote and election of directors.

### Three Counties Served

The Pacific Power & Light company serves all three counties, charging rates of \$4.47 in rural areas and \$3.90 in urban areas for 100 kilowatt hours. The "objective" retail rate for Bonneville power has been set at \$2.50.

Proponents of joint action to acquire P. P. & L. facilities have not made clear whether they wish to purchase or condemn also the Powerdale generating plant of the private utility in Hood River. Some have indicated that the plant might be sufficient to supply virtually the

(Continued on Page 4)

## Dam Chief Still Mystery

(By F. T. Humphrey)  
(Oregon Journal)

Speculation over appointment of a permanent Bonneville administrator to succeed Acting Administrator Frank A. Banks, who was lent to Bonneville for 90 days by Grand Coulee, took on added significance this week with arrival from Washington, D. C., of Joel W. Wolfsohn, secretary of the national power policy board.

Wolfsohn, here to attend Friday's meeting of the Bonneville advisory board, is considered one of the possibilities for permanent administrator, though he personally discounted such a possibility on his last visit to Portland. He went into immediate conference with Banks.

Bonneville officials profess no light on the appointment subject, though with the adjournment of congress and the expiration of the 90-day period for which Secretary of Interior Ickes asked Banks to take over the Bonneville job, some announcement has been expected daily from Washington.

The recent visit of Judson King, a director of the National Popular Government league, and the pending visit of Morris L. Cook, former rural electrification administrator who will tour all power projects of the Pacific northwest, may also have some bearing on the Bonneville appointment, it is believed.

Others whose names have been mentioned in connection with the Bonneville post are: J. A. Krug, electrical engineer for TVA; Llewellyn vans, consulting engineer for TVA and formerly of Tacoma City Light; Charles E. Carey, principal construction engineer for Bonneville administration; C. C. Hockley of Portland, regional PWA director; Clarke Foreman, assistant to Ickes and in charge of the PWA power division; Frank McNinch, who is to be succeeded as chairman of the federal communications commission by James Lawrence Fly, chief counsel for TVA and for the last two months acting chief counsel for Bonneville; former Senator C. C. Dill of Washington, one of the fathers of the Grand Coulee

## Power Rates Coming Down; Report Shows

SALEM, Ore.—Electric rate reductions totaling more than \$300,000.00 and affecting more than 60,000 users, have been made by public utilities in Oregon since January 1, says Ormond R. Bean, state utilities commissioner.

These reductions by various operating companies, said Bean, have resulted following informal hearings or conferences under the commissioner's plan of continuous investigations, whereunder the earnings of the concerns are constantly under review.

"We are anxious to pass on to the consumer all the savings possible," said Bean, "and in this seven months period these reductions are almost equally divided between the residential and commercial brackets of the service. The companies have cooperated with this office in its determination to pass on to the public all possible benefits in lower rates."

Among the companies which have announced reductions in their electrical rates this year are:

Paisley Electric, Pacific Power and Light, Mountain States Power in the Willamette Valley, Coos Bay Tillamook divisions; West Coast Power, Idaho Power, Preston-Shaffer Milling, Portland General Electric, California Public Service, California-Oregon Power, Eastern Oregon Light and Power and Butte Light and Power.

### MONEY IN THE BANK

In the Cascade Locks Treasurer's report found on page 3 of this issue it is interesting to note that on August 14 the city of Cascade Locks had NO OUTSTANDING WARRANTS and a BANK BALANCE of \$197.56.

project, and the former Senator James P. Pope of Idaho, now a TVA director.

### LOST: ONE FOUNTAIN PEN

Apparently in a slight touch of absent mindedness the writer of these lines misplaced his most valued fountain pen Monday night while he was in Cascade Locks for the council meeting.

If anyone finds themselves in possession of this pen the writer would appreciate it if that party would turn it over to Lloyd Mallory in the City Light office, who in turn will return it to the writer. Thank you.

Please pay your light bill, present or past, at the new City Light office (formerly Merrill's Tavern), Cascade Locks.

CITY LIGHT,  
Cascade Locks

## Power Line Clearing Job O.K. Sought

Don G. Abel, Washington state WPA administrator, has informed F. A. Banks, acting administrator of the Bonneville project, that he has passed favorably on a supplementary right-of-way clearing project along the Bonneville-Yakima-Grand Coulee power transmission line, the Vancouver-Aberdeen line, the Kelso-Cathlamet line and the Vancouver-Eugene line and that the proposal has been sent to Washington, D. C., for the president's approval.

Work calls for clearing and grubbing right-of-way of varying widths, constructing a roadway to be used for construction work and maintenance, building bridges, installing culverts and preparing transmission tower sites and was proposed by the interior department to meet conditions that have arisen in the field and were not contemplated in the original project.

The new project proposal calls for clearing approximately 5225 acres of brush, constructing 476 miles of road and building 10,330 lineal feet of culverts and bridges.

The Bonneville-Yakima-Grand Coulee line, starting at Bonneville, (Continued on Page 4)

## Bonneville Power To Go To The Dalles

Acting Administrator F. A. Banks today assured Wasco County citizens that immediate steps would be taken to construct a Bonneville power line to The Dalles. Yesterday the city and county voted the establishment of a people's utility district, following the example of nearby Hood River County.

Bids for construction of the 110,000-volt transmission line to run through both of the districts, will be asked within less than thirty days, Banks said. Completion of the line will be required not later than June 30.

Practically all of the right-of-way for the Wasco County line is expected to be in the possession of the Bonneville Project by October 15. WPA clearing crews will be increased substantially so that erection of the Oregon power line can proceed rapidly.

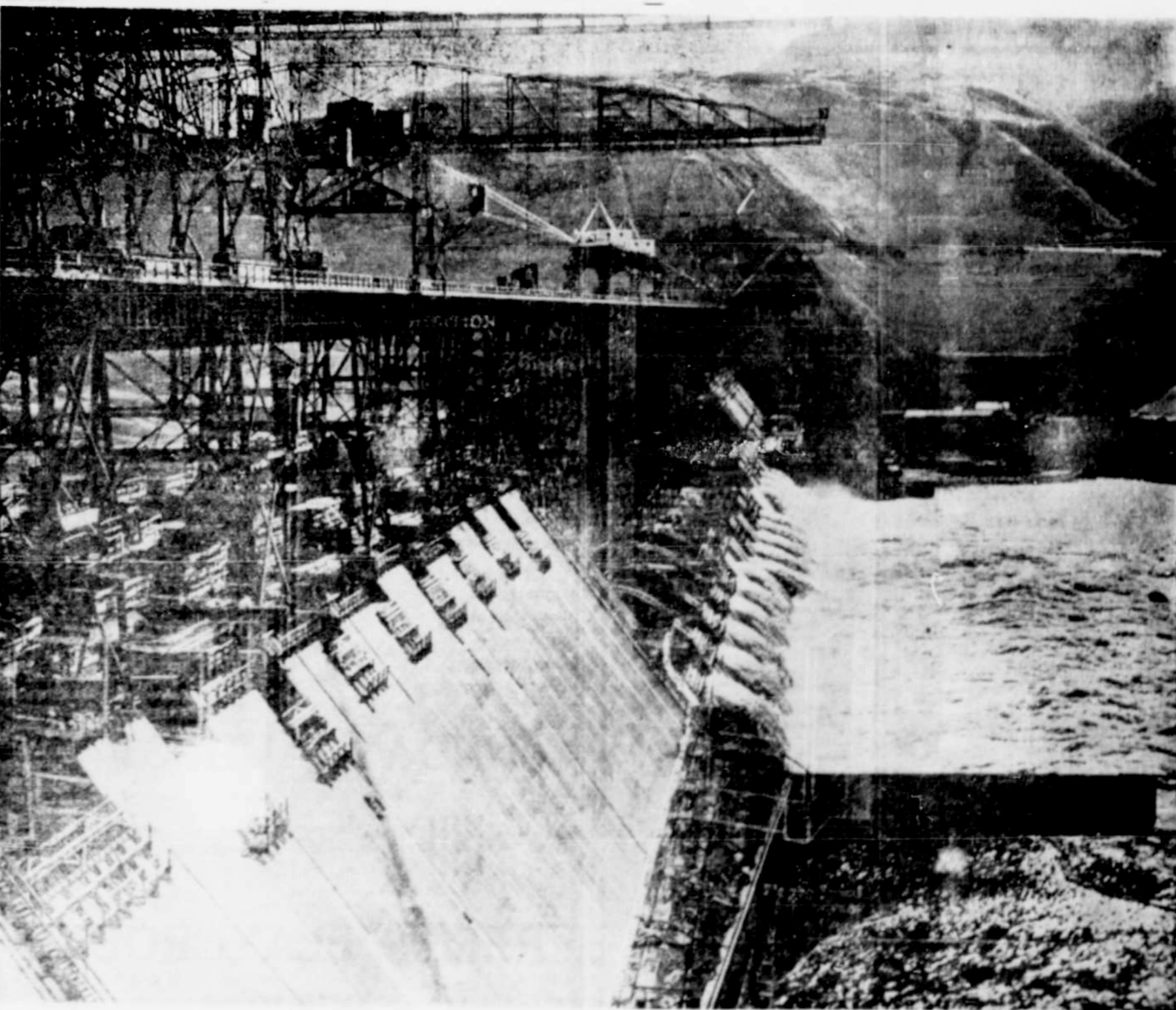
### Local Lines Needed

"Delivery of power to Wasco County People's Utility District," Banks said, "of course, is dependent upon acquisition of a distribution system by the district. We shall be glad to assist the district in every way in solving their engineering and accounting problems, so Bonneville power can reach Wasco County consumers at the earliest possible date."

"Formation of public districts at Wasco and Hood River Counties indicates a growing sentiment among the people of Oregon to avail themselves of the preference in the style of Bonneville power granted them by Congress," Banks said. "Wasco County is forward-looking and progressive in taking full advantage of all the facilities provided by the federal government Columbia River development at Bonneville."

"I understand that formation of a port district and erection of docks for ocean vessels already has resulted in lower freight rates on wheat and other commodities from The Dalles. Now, by forming a (Continued on Page 4)

# Grand Coulee Dam Is Stupendous Project



GRAND COULEE Fifteen small Niagaras are formed as the Columbia river surges through center spillway of the Grand Coulee dam in eastern Washington, as shown above.

A short time back four newspapermen, representing the Oregonian, Oregon Journal, The Dalles Optimist and the Cascade Locks Chronicle were the guests of Bonneville Administrator F. A. Banks on a four-day tour of inspection of the entire inland empire and the Columbia Basin. In this week's paper a short discussion of the Coulee Project is given.

About 25,000 years ago, a great ice cap which covered Canada crept down into northern Washington until it blocked the Columbia River with an ice dam more than a thousand feet high. Behind this mighty dam the river backed up into a huge lake which finally overflowed the canon walls at several points on the south side of the river.

During the years that the water overflowed, it rushed down across the lava beds in a southwesterly direction, cutting out a huge gorge which is known as the Grand Coulee. More than 40 cubic miles of fine silt were cut out of the Grand Coulee by the river. When the waters reached the flat country around Ephrata, they spread out over the flat country south of there and deposited this silt as a huge delta before they poured back into the old river channel between the towns of Vantage and Pasco.

### When the Ice Melted

When the ice dam finally melted, the waters of the huge lake formed behind it rushed down the old channel of the river, leaving the Grand Coulee high and dry—more than 600 feet up on the canon wall above the level of the river. The great delta that had been built up to the south was left a tract of 1,200,000 acres of rich soil with insufficient rainfall to consistently raise crops.

This was the condition of affairs when, in 1921, General George W. Goethals, Builder of the Panama Canal, investigated the possibilities of irrigating this great delta from the river for the state of Washington. He reported the project both feasible and practical—"A greater (Continued on Page Three)