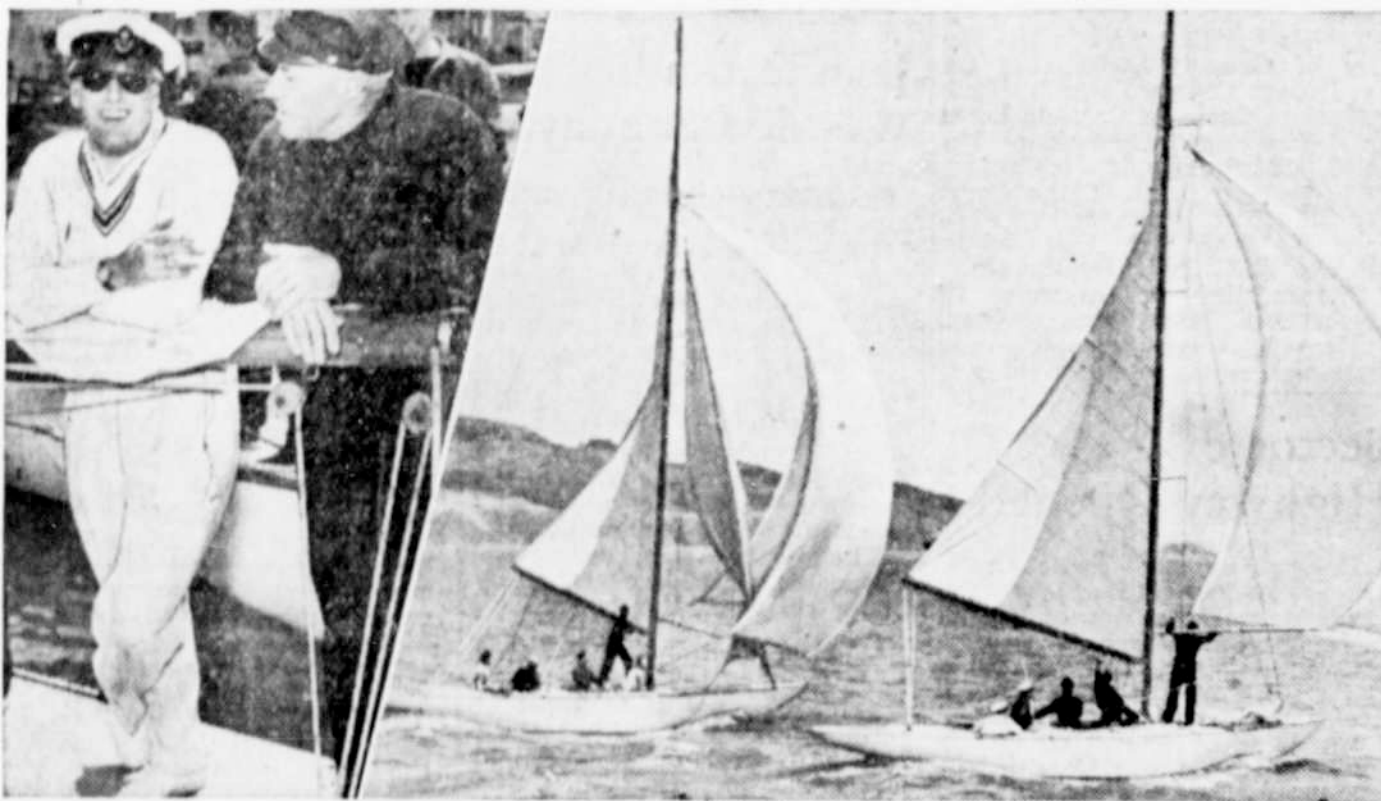


DEPICTING PEOPLE AND EVENTS



Crown Prince Olav Close Second in Yacht Race



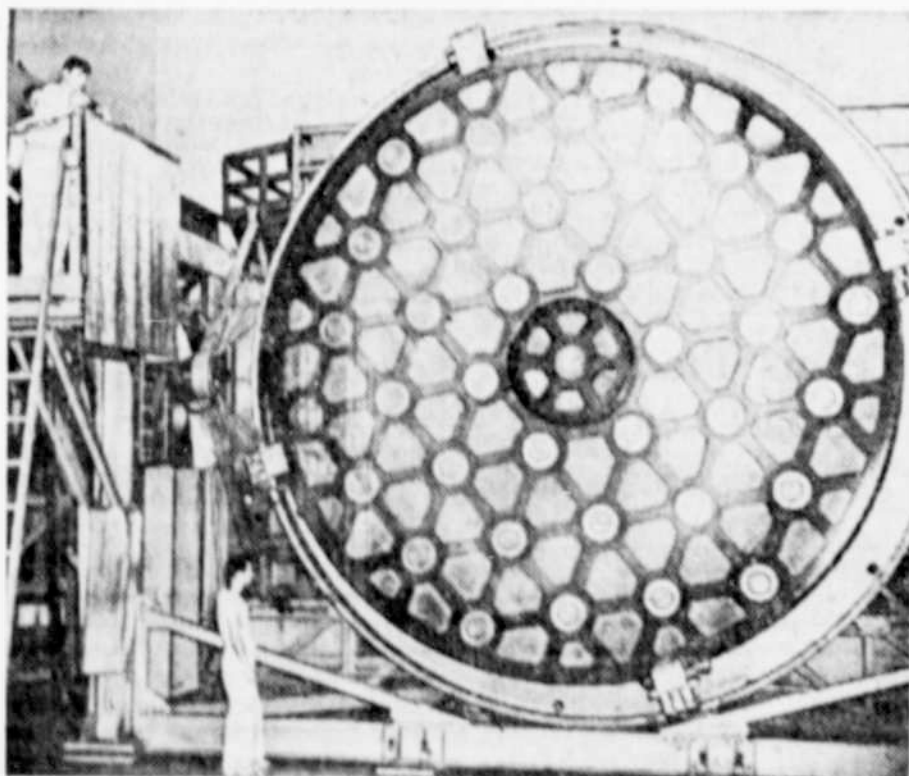
Completely democratic, Crown Prince Olav of Norway, left, chats with Captain Stanley Barrows following a 10½-mile yacht race in San Francisco bay. Prince Olav, in a borrowed boat and over a strange course, skippered his boat to second place behind Captain Barrows. Right: A close race throughout, the prince was slightly in the lead when this picture was taken.

Darkhorse Captures First Duck Derby



These Arcadia, Calif., ducks, under the supervision of their attractive trainers, were part of a large field of entries at the first annual duck race at Santa Anita racetrack recently. Members of this feathered quartet were heavy favorites when they waddled to the post, but none of them finished in the money.

First Close-Up Picture of Giant Mirror



For the first time since work started on the 200-inch mirror for the giant Mount Palomar telescope, a photographer gained admission to the lens room at the California Institute of Technology and obtained this striking "close-up" of the huge mirror. Center of the mirror shows a 40½-inch hole through the glass, plugged temporarily for polishing convenience, through which the gathered light may be reflected from an auxiliary mirror to the Cassegrain focus beneath the 200-inch mirror. It will be completed late in 1940.

British Army Shows Strength in Mimic Warfare



An anti-tank gun crew in action during recent exercises of the tank division at Aldershot, England, which were witnessed by many high-ranking army commanders. The exercises were part of mimic warfare games held recently to gauge army strength and to demonstrate preparedness. Other branches of the army demonstrated their might before British dignitaries.



RUMANIAN MINISTER

Grigore Gafencu, Rumanian foreign minister, pictured in flying garb before he went aloft in a British bomber near Hornchurch, England, recently. He was in Britain to discuss Anglo-Rumanian affairs in the present crisis.

They Drink It Sweet

The Brazilians say "coffee should be as black as coal, strong as Samson and sweet as a woman's heart." Perhaps their sentiment explains the cup of coffee filled more than a half with sugar. Most of the natives drink from 10 to 20 cups a day; coffee is as important a national drink for the Brazilians as wine is for the French.



RESCUE CHIEF

Admiral C. W. Cole, commandant of the Portsmouth, N. H., navy yard, ordered the submarine Sculpin to try to make the first contact with the submerged Squalus when it went down with 62 men off White Island on the New Hampshire coast. The Sculpin discovered a red smoke signal on the water's surface, indicating distress.

HERO HONORED

The Distinguished Service medal was presented recently to Lieut. Arthur F. Anders, right, hero of the bombing of the U. S. gunboat Panay on the Yangtze river in China last year. The award was made by Vice Admiral John W. Greenlade, commander of battleships of the U. S. fleet.

