

CLASSIFIED ADS

Deadline Monday night
 1-25 words One time, 15c Thereafter, 10c
 25-50 words One time, 25c Thereafter, 20c
 50-75 words One time, 50c Thereafter, 35c

FOR SALE

BALED OAT straw. H. R. Arkins, phone 264, Parkdale. 1-3-10

ONE PAIR 7-ft. Maple skis with binders, in good condition, phone 1712. 12-27*

BAILED ALFALFA Hay \$18 a ton. Phone Hood River 2733. 12-27-1*

POTATOES, Combination, 45c per 100 lbs. Cliff Thomas, Parkdale. Phone 27. 12 20-27-3-10*

USED HOT POINT Electric range, \$22.50, Boyington Hatchery, Phone 3654.

SHEEP MANURE, \$4.00 a ton delivered within 8-mile radius of Hood River. Also alfalfa hay at market price delivered. C. A. Swarts, Duckwall Bldg., Hood River. 11-22-tf

PINE AND FIR Wood for sale. Inquire Parkdale Hotel, Parkdale, Ore. 11-22-tf

RAWLEIGH ROUTE in Hood River County, good paying business. Leaving on account of ill health. For particulars, call 5789 or see Ralph W. Clark. 11-11-tf

\$450 EQUITY in 1937 Terraplane Deluxe Sedan. \$200. 201 Hood River Hotel. s20tt

1000 CORDS DRY WOOD, delivered or at yard. Al's Wood Yard, Hood River. j6tf

APPLE CIDER, pure and sweet, every day in the year at Parmelee's Fruit and Cider Stand, four miles from Hood River on Loop highway. If not open at gate, drive right in to house.

FOR SALE—Almost new 1937 three-quarter ton Chevrolet pickup truck. \$485. Terms or trade. This is a real buy. Phone or write Warren Davidson, Cascade Locks. 12 27-3*

\$400 EQUITY in \$1800 four-room new modern bungalow on Heights. Payments \$50 a month at 6%. Call 1008 Hull Street. 1 3-10*

WANTED

CARETAKER and generally handy man. Inquire at Columbia Hotel, Cascade Locks. 1-3-10*

RELIABLE MAN wanted for Mc Ness route for nearby territory. Good pay; steady work; no funds required. If interested, see C. J. Wilde, local Mc Ness dealer, or phone 30X Parkdale, Ore. 11, 22-29; 12, 6-13-20

FOR SALE OR TRADE

100 FEET of inch and one-half pipe; one '29 Chev motor; one 32-20 rifle. Will trade for wood. A. H. Orcutt, 7 E. State Street. 12 20-27*

FOR RENT

FOR RENT—1 and 2-room furnished housekeeping apartments; for sale or rent, 160 A. stock and dairy farm. 109 State St. 12-27 1-3*

BABINS, two and three rooms. Light and water available. Andy Lane, Cascade Locks. tf

WANTED TO TRADE

HORSES, CATTLE, hogs or sheep W. H. Miller, R.F.D. 1, 1 1/2 miles north of Odell on Tucker road Phone 57 Odell.

LARGE 9-tube Radio plays perfectly and in a beautiful cabinet, cost when new \$179.50. Will trade for buzz saw in good condition. See John R. Edgar, Hood River, Rt. 2, box 203. One-half mile west and south of Dee Grade School. 12-13-tf

MISCELLANEOUS

EXPERT PIANO TUNING—Adjusting and voicing. W. R. Beatty, 802 Ninth St. Phone 6823. 10-4-tf

LET US SOLVE Your Christmas problem with a cheery pot, plant, holly wreath, or cut flowers. Billings Flowers, phone 3252. 12 6-13-20

RUG WEAVING—Rag Rugs and other fabrics woven by Master Weavers. Hood River Woolen Mill, Phone 5481. 10-11-tf

WE GIVE Guitar or Violin with short lesson course. Private lessons. Ask about all other instruments. Beatty School of Music. Phone 6823. 10-4-tf

KEEP YOUR STOCK at home with a prime electric fence. Safe and economical. Roy Kirby, R. F. D. 1 Hood River. Tel. Odell 108. 9-6tf

Are you buying property? Are you sure the title is clear? Don't take a chance. An abstract is the only way of determining title to real estate. See Hood River Abstract and Investment Company, 3rd and Cascade Phone Hood River 1331.

DO YOU WANT TO REFINANCE or borrow money on your car? All details handled confidentially at our office. See Tom Scott, 114 1/2 3rd street. tf

BULLS FOR SERVICE—Guernsey, Jersey. We bring bulls to your place. Phone 5633. H. A. Bendler, Rt. 3, Hood River, one-half mile northwest of Barrett store. ma26tf

Government's Offer Condemned at Coulee

The government's offer of a free site for a contractor's steel fabricating plant within the area to be flooded by the Grand Coulee Dam was condemned recently by the city council of Grand Coulee.

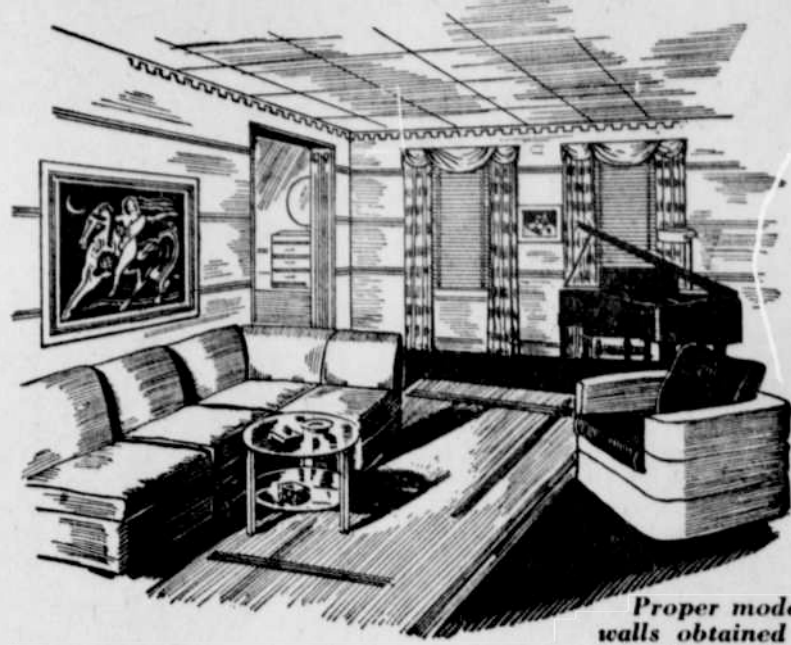
The fabricating plant is to be constructed by the winning bidder for steel penstocks for the dam.

The council proposed the plant should be built where it can remain as a permanent structure to assist in attracting other industrial plants. The protest will be forwarded to the state's congressional delegation.

"We believe such an act on the part of the government would be viewed by the public as an open acknowledgment of the government's own lack of faith in the development of the great natural resources in the vicinity," the council's resolution declared, "and would definitely discourage other industries from locating here."

REMAKING THE HOME

By JANNETT ALLEN



Proper modernist walls obtained with cane fiber plank.

A Room in Modernist Manner

SO you have made up your mind to let your house go modern!

You have passed the point of being startled by a walnut table with glass legs or a fireplace faced with blue mirror glass. You acknowledge that this idea of space saving is smartly useful in a built-in wall bench and desk combined. A segmental sofa that turns into single easy chairs when you choose to pull it apart makes for variety.

Well, the background of a truly modern room must be in keeping with the furniture that is to go in it. The selection of wall surface may be the determining factor in deciding whether a room will be restful or distracting in its general effect.

It is a principle among the modernists that horizontal lines produce that restful feeling which is so much needed at home in

this restless, over-excited age. A fine effect of this type is easily obtained by the use of Celotex insulating finish plank for side walls contrasted with a lighter toned ceiling.

The natural coloring of this plank forms a neutral background for the gayest draperies and upholstery materials you may wish. Laid in horizontal style, its beveled joints form the slight accent line which gives any room that longer, wider look. Tan, ivory, light brown, and mottled brown are the unobtrusive colorings available. Sanded tapestry and ripple finishes present a variety of texture choices. Widths run from six to sixteen inches.

The ripple finish plank in a light brown or tan color gives the walls that note of warmth which every room, modern or period, must have if it is to be livable.

OUT OF THE CABBAGE BOWL COMES SALADS GALORE

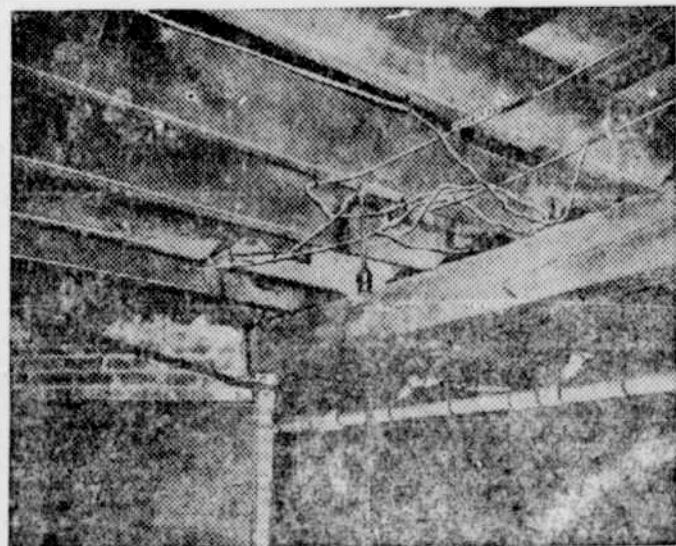


WITH a bowl of shredded cabbage—previously crisped in cold water and strained—always on hand in your refrigerator, you have the basis for an infinite variety of inexpensive, delicious salads—fruit salads, vegetable salads and entree salads, and if you have one of the new air-conditioned ice refrigerators, you'll be amazed to see how fresh the cabbage keeps. For these new refrigerators provide a constant circulation of clean-washed, properly moist air, which means that foods do not rapidly dry out, nor do they absorb odors. Therefore, this does away with the bother of having to keep foods covered. Then on a day when a salad is scheduled for the main course, you'll simply take as much cabbage as you need from your refrigerator bowl of shredded cabbage, add tuna fish or salmon to it, together with chopped celery and pimiento, and toss these ingredients together with a cream salad dressing. Or place a square of tomato aspic jelly on lettuce; then top it with a mound of shredded cabbage, sliced stuffed olives and a little minced onion blended with mayonnaise. And to make a fruit salad, try mixing cabbage with wedges of pineapple, black cherries, quartered marshmallows and French dressing. They're all "tops" in flavorsome goodness!

ELECTRIC SERVICE WITH SAFETY

The Principles of Safety Applied to Wiring

Records show that the use of electricity in homes has doubled since 1920. Electricity is becoming such a common servant in American households that we sometimes fail to realize how many times we use it every day. Each year new ways are discovered to make electricity do more of the housewife's work.



Make-shift wiring is likely to involve hazard.

Along with this widespread increase in use, should go a working knowledge of how to care for electrical equipment and keep it serviceable and safe. It is common knowledge that electricity is perfectly safe when properly used but there are certain rules which should be observed to keep it safe at all times. It is the purpose of this series of articles to review these rules.

There are five fundamental principles for the safe use of electricity in the home. These are:

1. Use electrical materials suitable for the job at hand.
2. Keep electrical equipment in good order.
3. Do not tamper with appliances or other electrical equipment.
4. Avoid handling electrical cords and devices with wet hands.
5. Do not use electrical equipment adjacent to water or in damp places unless special precautions have been used.

These principles can apply to all uses of electricity, and if observed, will go far in eliminating shock and fire hazards. Particular applications of these rules to some of the common household appliances

depends upon the character and location of the house, and local ordinances.

Whenever new wiring is to be done, or when additions, alterations or repairs are needed, dependence should not be placed on an inexperienced handyman, for in this way the safety of the whole installation may be impaired. It is best to have the work done by a capable authorized contractor. In most localities electrical inspectors are employed to inspect under the rules of the Code and to approve new wiring and repairs. Experienced electricians know the Code rules and will do the job so that it can be approved by the inspector.

Wires are sometimes exposed in attics and basements. In these locations the householder should see that the wires are protected against injury. If discarded furniture or trunks are stored in the attic they should not be allowed to touch the wires. Allowing electrical equipment to fall into disrepair is responsible for most of the fires charged against electrical service. It must be remembered that regardless of external appearances, fixtures and wires behind the fixtures are just as much "alive" as they were originally, and require the same protection and consideration. When sockets, outlets or switches become broken or become loosened from their proper positions, or whenever it is possible to obtain a shock from electrical equipment, a repair should be made promptly.

Allowing attachment cords and extension cords to become worn to the point where the wires are exposed, is unwise. Such cords should be replaced before they become fire and shock hazards. In having cords replaced see that the new cords are of standard quality. Cords approved as complying with the safety standards of Underwriters' Laboratories have bracelet-like labels wrapped around each length, and it is wise to see that labeled cords are employed in all cases.

will be discussed later in this series.

The electrical equipment in a house could be divided for the sake of discussion into wiring, and appliances. This installment will be confined to wiring. Most house wiring is located within the walls and therefore is concealed from view. There is little that a householder can do toward keeping the concealed wiring in good order; he simply must hope that a good job was done when the house was built. In building a new house, however, or in having an old house rewired, he should make sure that established rules and practices are followed. Fortunately, a set of rules has been drawn up for safe practices in house wiring, known as the National Electrical Code. This Code is applied by electrical inspectors over the entire country. It is revised periodically by a Committee of the National Fire Protection Association and has been accepted as an American Standard by the American Standards Association. The Code recognizes a number of different types of wiring, all of which are perfectly safe when properly installed. Which type of wiring should be used in a particular case

This is one of a series of articles prepared by the International Association of Electrical Inspectors to encourage safety in the use of electricity in homes.

Special Combination Magazine Offer . . . Details on Page 4