

"Get a Premium Milk at No Extra Cost"
GRADE 'A' PASTEURIZED
 Dairy Products

Daily service. Get our milk at any grocery store or have it delivered at your home.

BRANDES CREAMERY, Inc.
 ROY SINNER, Driver

CHURCH SERVICES

Community M. E. Church
 Cascade Locks

Rev. Lewis F. Smith, Pastor.
 Sunday School 10 a. m.
 Public Worship 11 a. m.
 Evening Service 7:30 p. m.
 Prayer meeting Thursday evening.

Community Center - Chapel
 Bonneville.

Rev. S. D. Treiren, Pastor.
 Sunday School 10 a. m.
 Preaching 11 a. m.
 Entertainment 8 p. m.
 Public invited to all services.

BONNEVILLE

The teachers of the Bonneville school wish to express their appreciation for the sum of money donated to the school by the Women's Club of Bonneville. This sum is to be used toward basket ball.

A toast shower was experienced Tuesday morning upstairs at the Tyrell's Tavern when the storm broke in all it's furry, blowing out one of the large windows in the corner occupied by the Dam Chronicle office, and causing toast which had been stacked for breakfast to fly all over the second floor.

Much damage was done to the government blueprints when the roof was blown of the building in which they were kept.

The Bonneville Library in the Community hall, a branch of the Portland Library has just received several new fiction books. The hours are 7 to 9 p. m. on Mondays and Wednesdays and from 3 to 5 p. m. on Fridays.

Every Motorist Should Know Needs of His Car

If you would reduce automobile accidents, give heed to the four commonest causes of mechanical failure. These four causes are listed as follows by Wilson S. Isherwood, prominent automotive official and a leader in safety campaigns:

- Bad brakes,
- Worn tires,
- Worn steering gear,
- Poor acceleration.

Every motorist should know when brakes are not properly functioning and when tires have reached the danger point, Mr. Isherwood declared. But there are many who are unaware of the necessity for steering gear inspection, and for tuning up the motor for better acceleration. A motor that is well tuned up, he stated, seldom stalls on a railroad crossing or goes "hay-wire" in traffic.

In tuning up the motor, Mr. Isherwood points out the necessity for a complete tune-up, which can be performed in about 30 minutes. This consists of the following operation:

1. Clean and adjust spark plugs, replacing any worn plug.
2. Inspect ignition cables and battery.
3. Clean breaker points.
4. Adjust timing.
5. Adjust valve clearance.
6. Adjust carburetor.

Fat Men and Giants

The United States has its fair share of fat men and giants. Miles Darden was both, says a writer in the Kansas City Times. He was 7 feet 6 inches, and weighed a little better than half a ton. He was born in 1798, and lived until 1857, was married, a father, worked all his life, and was a pretty normal individual in spite of his size. Silly statistics and information are always in order when discussing giants or fat men—it took thirteen and a half yards of material to make a coat for Darden.

Crabs "Shed" Quickly

The transition of crabs through the three stages from peeler through soft shell to hard shell is only a matter of a very few hours under natural conditions. The hardshell crab, having outgrown its shell and with a new or soft shell developed beneath, gradually breaks out of the hard shell. During that stage it is known as a peeler. Once out of the shell the new shell is soft and will remain so if the crab is taken out of the water and packed for shipment to market. However, if the crab remains in the water for two or three hours after sloughing the shell, the new shell also becomes hard. The entire process may not require more than four or five hours.

"I SIGN ANYTHING"

'DOC'S' DAM SIGN WORKS

ALL KINDS OF PAINTING
 FREE ESTIMATES

Cascade Locks

NEW BEACON THEATRE

Stevenson, Wash.

Continuous Show Every Sunday from 3:15 P. M.

Remember—A refund of 5 cents on each admission from Oregon people when accompanied by a toll bridge ticket. Make up a party and visit the show.

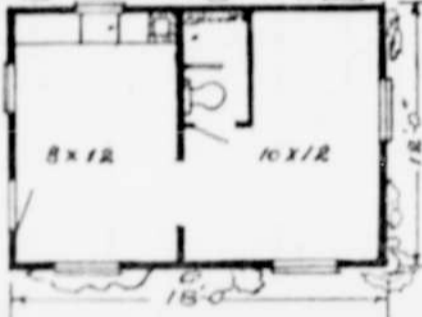
Friday, Saturday, Oct. 26, 27
 Warren William as Philo Vance and Margaret Lindsey

in
THE DRAGON MURDER CASE
 Chapter Four of
 "The Vanishing Shadow"
 and a Colored Silly Symphony Cartoon

Sun., Mon., Tue., Wed.,
 October 28, 29, 30, 31
 Special—George Arliss in
THE LAST GENTLEMAN
 and the Best Short Subjects

Thur., Fri., Sat., Nov. 1, 2, 3
 Special—Wallace Beery and Jackie Cooper

in
TREASURE ISLAND
 Chapter Five of
 "The Vanishing Shadow"
 This is a Special 2½ Hour Show—So Come Early



Material for this house can be purchased for only \$90. This includes all material, with plywood finish for interior. This house complete with concrete foundation, plumbing, electric wiring, painted and ready to move into for about \$280.

OWN THIS HOME

In Beautiful

EDGEWOOD PARK

CASCADE LOCKS

Restricted To Protect You

From living in a shanty town district. Besides, it is much cheaper to build in a restricted district. Come in and ask about it. Many beautiful inexpensive homes being built now in this district. Close to grade and high school. Level road to drive in and no snow drifts to fight.

Warranty Deed

\$100

Warranty Deed

ON VERY EASY TERMS
 NO GUESSING ABOUT WATER AND LIGHTS
 Over 200 choice homesites to choose from. Rich loam for garden and flowers.

SEE BILL KEELER OR IRA OWEN AT CASCADE LOCKS LUMBER COMPANY OR J. B. LABER, 821 FAILING BLDG., PORTLAND. ATwater 6524

FOREST WOOD \$5 Cord

\$5.50 Cord Delivered in Bonneville

\$6 Cord Delivered in Warrendale

THE HARVEY WOOD YARD

Rear Of Lakeview Market