

The three gasoline requirements for winter driving

If you're having trouble starting—if you sit in the cold and buzz-buzz your starter without result—then it's time to change to "Red Crown"—the winter fuel for motors.

Use "Red Crown" exclusively, and you get off at the first jump of the spark.

"Red Crown" vaporizes readily in the coldest weather. Fill your tank with "Red Crown" and nothing else, and you'll be rid of three-quarters of your cold-weather motoring troubles.

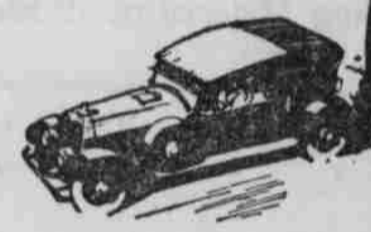
Fill at the Red Crown sign—at service stations, garages and other dealers.

STANDARD OIL COMPANY
(California)

rapid vaporization
Instant combustion
QUICK STARTING



ZEROLINE
Zerolene good cold-test oils flow freely and lubricate perfectly in zero weather—protect the bearings—increase the power and flexibility of your engine.



100% power

motor will not warm it up; retard the spark and let the engine idle slowly. Oil should be drained more frequently from the motor in winter than in summer. Cold temperature aggravates the dilution of the oil by raw fuel, especially when the choke is kept closed too long. It is not advisable to drive a car until the motor has been turning over at a slow rate of speed long enough to give the oil a chance to get well into all the working parts.

Condensation in the cylinders due to cold weather often results in the mixing of the gasoline with the oil. We have recommended that under average conditions the oil be drained approximately every 1,000 miles in order to guard against excessive wear of the bearings or cylinder walls; however it is advisable to change the oil every month during the winter driving regardless of when fresh oil was last added.

In cold weather the capacity and the voltage of a battery are less than they are at normal temperature. Likewise it is much more difficult to crank an engine because of the effects of cold temperature on the lubricating oil, so requires more cranking because of the incomplete carburetion of the fuel when the motor is cold. Thus the fuel on this battery should be conserved; therefore when starting the motor throw out the clutch.

SINKING FUND TAX BECOMES AN ISSUE

Sentiment is divided over including in the annual budget of taxes for 1923 an item of \$7,780.50 for establishing a sinking fund for the Mount Hood Loop Highway bond issue. District Attorney Baker recently instructed the county court that the sinking fund would have to be started immediately. An opinion has just been received from the attorney general's office by Mr. Baker, announcing that the county may wait for four years before starting the sinking fund. One element of citizens' wishes to defer raising the fund, while others argue that the sinking fund should be started at once.

The county will have to raise by taxation next year \$13,750, interest on the Loop Highway bonds, which have been issued. It will be necessary to issue another block of about \$50,000 to meet surfacing bills.

Parkdale Restaurant Wrecks Place
The sheriff's office, notified one night last week from The Dalles that J. C. Thomas, Parkdale restaurant man, was motoring toward Hood River badly intoxicated, were on the look out for him when an a. s. o. message came from Parkdale. The man had eluded the officers and was busy wrecking his place of business.

Thomas on reaching his restaurant, according to witnesses, sat about systematically to break all of his dishes, soft drink bottles smash and to wreck show cases. A valuable phonograph was ruined.

Justice of the Peace Onthank fined Thomas \$50 and sentenced him to 30 days in jail. The sentence was suspended, however.

The Baptist Church

At 10 a. m. the Sunday school begins its work. At 11 a. m. Evangelist Bentley will preach. At 3.30 p. m. Junior B. Y. P. U. The Senior will meet at 6.30 in the prayer meeting room. At 7.30 we will have a great meeting which you must not miss. Evangelist Bentley will preach. Come and hear him, also the singing by the church chorus and by the junior chorus. There will be also special singing. There will be services every evening of the week at 7.30 and you are all welcome. We seek to serve you and help you in your spiritual life. Subject for Sunday night, "Hell and Its Location." C. R. Delepine, Pastor.

Immanuel Lutheran Church

Celebration of Holy Communion. Services begin at 11 o'clock. Announcements. Sunday school at 9.45. Choir rehearsal Friday at 8 o'clock. Sale by the ladies of the congregation Saturday at the Book & Art Store. P. Hilgendorf, Pastor.

CHRISTMAS

would lose most of its joy but for the fulfillment on that great day of anticipations of the children. We have made preparations at our store for gladdening little hearts. Come see our Toyland. Come early and have the choice made by your little girl or boy laid away.

We also have substantial Gifts for Adults. And all the year—week in and week out—our store will be ready to serve your hardware wants, whatever they may be.

OUR STOCK OF
PAINTS, OILS AND HARDWARE
ARE KEPT ALWAYS UP TO DATE
H. S. BRAAKMAN
SMITH BUILDING THIRD STREET

Christmas Cheer

The elements are setting the stage for a real Oregon Christmas. None of us mind so long as the chill blowing of an East wind does not give the unwelcome promise of imtemperate cold.

But whatever the weather may be, remember that we are ever ready to furnish you the substantial fuel for the inner man, **Meats of all kinds.**

And why not try some of our pork sausages. They're just the thing this kind of weather.

SERVICE, QUALITY AND SATISFACTION

The Hood River Market
A. F. DAVENPORT, Prop.
Phone 4311

Order your Personal Greeting Cards for Christmas early. We have a stock on hand.
THE BOOK AND ART STORE
HOOD RIVER, OREGON

THE PLEASURES OF PIPE SMOKING
You may experience all of them if you will use E. C. C.'s Mixture, the American Tobacco Company's EXTRA FANCY brand. Pack your pipe with it and you will enjoy a cool, sweet smoke. It has an aroma you will never forget. A 3-ounce Can for \$1.00
Blue Bear Smoking Tobacco in 25c packages
The Electric Kitchen
R. S. GEORGE

HOW TO PREPARE FOR COLD WEATHER

(By Cameron Motor Company)

The average car owner is seldom in a position to know just what must be done to his car in the winter to approach nearly as possible conditions as they exist in warm weather. It is therefore largely the duty of the automobile dealer to give him this information. For this reason the following instructions have been prepared for use of Anti-Freeze Solution Cooling System.

Before any anti-freeze solution is placed in the water circulation system, it should be inspected for leaks and repairs made if necessary. It is usually a good plan to replace hose connections at this time of the year. Do not use compounds containing calcium chloride or other similar compounds, as they corrode the inside of the radiator. The only satisfactory solution that we know of is alcohol and water. De-natured alcohol is preferred. The following table shows the different proportioned mixtures with temperatures at which the solution will begin to freeze.

Denatured Alcohol	Water	Freezing Point
10 per cent	90 per cent	27 degrees
20 per cent	80 per cent	19 degrees
30 per cent	70 per cent	10 degrees
40 per cent	60 per cent	2 below zero
50 per cent	50 per cent	18 below zero

It must be remembered that it is necessary to add alcohol from time to time, to replace what is lost due to evaporation. When this is necessary, use a mixture of 60 per cent alcohol.

During the winter months the fan belt can be loosened, which will reduce the flow of air through the radiator, and therefore allow the motor to run warmer than it otherwise would.

It will assist greatly in approximating the summer temperature of the motor if radiator and hood covers are used. With a radiator cover that is adjustable, a large part of the radiator can be covered, allowing the motor to readily warm up, and then adjusted to a suitable opening to keep the motor running warm but still not allowing it to overheat; also it will keep the motor from cooling off when not running if opening is closed when car is idle.

Due to the low gravity gasoline now being used, it is very essential, more especially in cold weather, to get as much heat as possible to the mixture to properly vaporize the gasoline to prevent condensation. On damp, foggy days such as we have here at this time of the year, it is necessary that the air to the carburetor be as warm as possible. To this end it is necessary that the outside opening in the air pipe be closed, so that all air going into the carburetor will come from the heater. In starting the motor, when cold, make sure that the choke is closed completely until the motor starts, then open slightly until the motor warms up, but do not even have it partially closed longer than necessary. Racing a cold

\$-MORE MILK-\$



MILK-FLO

"A High Protein Dry Feed"

ANALYSIS OF MILK FLO:

Protein	18.0
Fat	4.5
Fibre	10.0
Ash	5.0

MILK-FLO is more economical than the average farm-made grain ration, for there is a higher protein value with a lower percentage of crude fibre. Since it is a balanced ration, made of the highest grade of dairy feeding stuffs, is already mixed, it therefore is a time saver and can be used without worry.

"TRY A SACK"

Taft Transfer Co.
HOOD RIVER, OREGON

WHAT SUITS ONE DON'T SUIT ANOTHER

This is the reason for unlimited variety. We don't want you to take what you don't want. Substitution is not satisfactory to you nor us either. Order what you want and you shall have it. P. & G. Soap Coupons cashed here.

Consolidated Mercantile Co.

HOOD RIVER ODELL

HOOD RIVER MUST NOT FAIL ON THE RED CROSS!

GOOD 100% PURE

American-Maid Bread

FRESH DAILY AT YOUR GROCERS