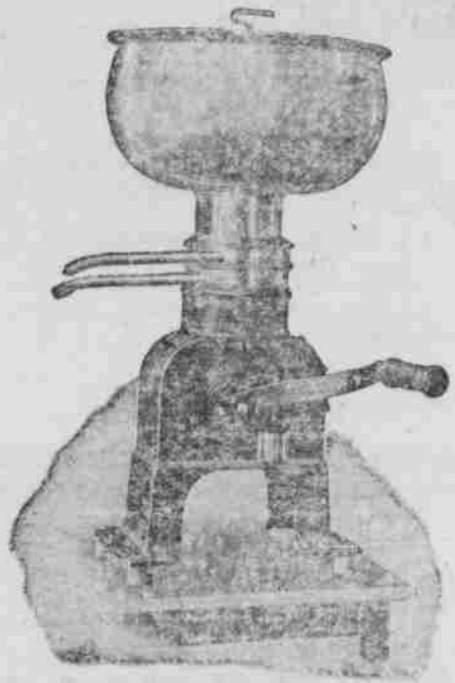


# Cream Separators at Factory Prices

Made from the best Swedish Iron and Steel by an old established manufacturer now opening a branch in Portland where you will always find Factory service.

Buy Direct from the Factory and Save  
All Middleman's Profits



The TOR

Hood River now has one of the best Creameries on the Pacific Coast, but you are not getting all the Butterfat your milk contains unless you use a good Cream Separator.

The TOR will get all the Cream  
and soon pay for itself in butterfat saved.

Easy to operate, easy to clean, and with ordinary care will last a lifetime. You will be astonished at the low price we are making and the high quality of the Separator.

A SMALL MACHINE FOR ONE OR TWO  
COWS AT \$27.00--Time Payments if Desired.

Write for catalogue or see the Factory Representative at the Hood River Creamery, Saturday, July 22nd.

CHAS. B. WALKER, Branch Manager

8 Front Street

PORTLAND, OREGON

## PORTLAND EXPERT PRAISES GOLF COURSE

W. H. Gerke, superintendent and grounds keeper of the Waverly Golf and Country Club, of Portland, here Sunday visiting C. N. Ravlin, director of the recently established Hood River Golf Club, inspected the 150-acre Oak Grove place purchased by the local club. He waxed very enthusiastic over the location.

The Northwest, while lack of water results in parched fairways in many places in the hot months, your unfairing water should enable you to keep the sod soaked and green. Your grounds, I think, will be very appealing to Portland golfers, and I predict that you have a big membership from that city.

A. W. Peters, another director of the club, has just received a letter from Chandler Egan, of Medford, ex-American champion, who announces that he will arrive here about August 1 to start construction of the Oak Grove links.

Before you buy an automobile you should see the new Studebakers at the Cameron Motor Co.

### Hilles Has Fine Cherries

While the general cherry yield here this year has been light, due to the poor setting of fruit, J. A. Hilles, owner of Meadowbrook Farm in the Oak Grove section, is picking a remarkable tonnage from his Bing and Lambert trees. The Lambert trees are especially heavily loaded. The cherries cover the branches in clusters as thick as bees in a swarm. The fruit is also of a uniformly large size. Mr. Hilles picked one eight-inch Lambert bough that bore 27 ounces of fruit, number 109 cherries.

Special prices on Utah King Coal direct from the car. Phone 2181. Emory Lumber and fuel Co.

## BIG DANCE HELD AT CONSTRUCTION CAMP

About 60 Hood River business men and their families attended a dance given Saturday night by resident officials of the Phoenix Utility Co., engaged in building a large new hydro-electric plant on Hood river for the Pacific Power & Light Co. A large motor party of Portland officials of the construction company and public utility concerns came here for the event, held in a large mess hall at the construction company camp. The visitors, who formed a gay dinner party at the Columbia Gorge Hotel before the camp dance included:

Gay W. Shipp, president of the power company, Mrs. Talbot, Miss Talbot and several visiting friends; John A. Lang, vice president of the power company, and Mrs. Lang; Lewis A. McClathun, general manager of the power company and vice president of the construction company, and Mrs. McClathun; Geo. F. Nevins, secretary-treasurer company, and Mrs. Nevins; H. H. Schollkopf, construction manager of the Phoenix Utility Company and chief engineer of the power company; Miss Humphreys, Mr. McClathun's private secretary; Mr. and Mrs. Wernicke, Mr. and Mrs. Richards and Mr. and Mrs. M. J. Wilkinson. Mr. Wilkinson is assistant treasurer of the power company.

Mr. and Mrs. J. E. Shinn and Miss Shinn were joined in matrimony by Geo. F. Mackay and L. F. Mattson. Mr. Shinn is superintendent of construction. Mr. Mattson is his assistant and Mr. Mackay has charge of the office of the construction company.

## APPLE RATE TO REMAIN AT \$1

Rumors to the effect that the apple freight rate on ships from Portland and Seattle to English ports, via the Panama Canal, will be reduced from \$1 to \$0.65 per box, are unfounded, according to local shippers. A. E. Woolpert says he has just received a letter from the Royal Mail line, which announces that the \$1 rate will be maintained.

The Royal Mail line, which carried a heavy tonnage of apples last year, has announced that its first refrigerator boat will be ready for a cargo on October 15. Thereafter sailings will be made every 15 days.

P. F. Clark says he has received no authentic information on a lower steamer rate on apples. He anticipates, however, that the keen competition among shipping interests may result in a modification of the present rate.

## White Salmon Has Brush Fire

A spectacular brush and grass fire which started near the Zeigler place just below the high bluff at Dingen Friday night ran up the hill for several hundred feet, endangering White Salmon's residence district. Property owners along the bluff were up all night fighting the fire and protecting their property.

At noon Saturday a brisk westerly wind fanned the flames and it was considered necessary to sound a general alarm to protect the endangered town, but the fire was confined to the grass and windfalls and no damage to property resulted. Business for a while was entirely suspended. An emergency pipe line was laid down Jewett avenue to the bluff, which is two blocks away. The 350-foot stairway from the dock road up the bluff was partly destroyed.

Several new small fires in the vicinity of the White Salmon and Little White Salmon rivers have been reported, but no damage of consequence has resulted as far as known. The air is filled with dense smoke.

Insist on genuine Ford parts when having your car repaired. Dickson Motor Co.

## K. OF P. BAND OPENS NEW HANNUM RESORT

The new Mount Hood resort, The Homestead, just completed by J. O. Hannum, was officially opened last Saturday, when the members of the Knights of Pythias Band, en route to the base camp of the Legion, were served dinner following a concert and flag raising ceremonies.

The new hostelry, uniquely constructed of tamarack logs, is equipped with 10 bedrooms. A huge, glass enclosed dining and lounge room, a feature of which is a monster fireplace, looks forth on the snow peaks, Adams, Rainier and St. Helens, of Washington, and vistas of canyon of the East Fork of Hood river. Mount Hood rises majestically to the southwest of The Homestead.

Mr. Hannum is now busy building a terrace, lawn in front of the hotel. Water is secured from a great spring of icy cold, 100 feet up the mountainside. The stream will operate a hydro-electric plant for the hostelry. Mr. Hannum will erect a number of individual cottages, and a grove of virgin forest will be converted into a public park. The hotel is being managed by Clint Wood and his sister, Mrs. S. D. Fisher.

A surveying crew of the Bureau of Public Roads on Monday began laying out the route of a lateral road which will connect the Mount Hood Loop Highway, the new grade of which passes within less a mile of the mountain resort, with the American Legion Camp, Cooper's Spur, and Cloud Cap Inn a short distance farther.

The new road will follow the general route of a mountain road constructed several years ago by Mr. Hannum from his place to the ridge between Tilly Jane creek and Sand canyon. It connected with a trail of easy grade to the foot of Cooper's Spur.

## NATION'S STRAWBERRY TONNAGE 18,000 CARS

As a result of the slump in the strawberry market about mid-June, growers here will receive considerably less for their 104 carloads of fruit this year than last season, when 85,000 crates brought an average of \$2.85. In view of the tremendous increase in the strawberry yield of the nation, however, shippers express satisfaction over this season's sales. The weekly report of the United States Department of Agriculture states that the 1922 strawberry crop of the nation filled 18,000 cars, about 6,000 carloads more than normal and nearly 3,000 greater than the tonnage of 1921.

Shipments of strawberries are ended here, but the final returns have not yet been computed by the Apple Growers Association, the district's only carlot handler of the product.

Comparative figures for previous seasons are as follows: 1915, 16,236 cars; 1917, 15,965 cars; 1918, 8,452 cars; 1919, 3,105 cars; 1920, 8,490 cars; 1921, 10,681 cars.

Without exception, all of the leading producing states whose output is marketed prior to June 15 have shown increases ranging from six per cent in Louisiana to 300 per cent in Missouri, Florida, west Tennessee, and Illinois shipped three times as many strawberries as last season. The North Carolina movement was 1,110 cars compared with 480 cars in 1921. Mississippi, Arkansas and Kentucky doubled their shipments, and Virginia gained 130 per cent. Only in New Jersey is there an apparent decrease in carlot movement, the total to June 15 being about 275 cars compared with 425 last season. Many Jersey berries, however, are hauled by wagon and truck to near-by cities.

The yearly average for the seven years, 1916-1922, is about 12,150 cars. During the war attention was drawn away from strawberry culture to the production of more essential crops. Compared with 1917, shipments in 1918 decreased nearly 45 per cent. A slight additional loss occurred in the spring of 1919, but since 1920 the industry has been developing, and this season's carlot movement exceeds the 7-year average by 6,000 cars.

## The Dalles Produce Truck Wrecked

Jack Kenney, driver of a truck for a transportation concern of The Dalles, miraculously escaped injury at 2:15 a. m. Monday when a hauler, fallen from an overhanging bank, crippled his steering gear, sending the truck into the ditch. The machine was badly wrecked. The load of garden truck and fruits was salvaged and hastened to the Portland market by another truck.

# DURANT

Just a Real Good Car.

Come in and see the new Durant; ride in it; convince yourself.

Durant has built over two million cars the past 35 years.

W. S. KAESTNER, DISTRIBUTOR  
107 Oak Street

# You Can Wash In The Kitchen

Use this Electric Washer  
in your Kitchen

It is often very convenient to wash in the kitchen. It saves you many steps up and down stairs. If you have children it enables you to keep watch of them, and if you live in an apartment it makes you independent of the other tenants. Doing washing in the kitchen is not a myth if you own a LAUN-DRY-ETTE, for you need no extra tubs.

The LAUN-DRY-ETTE does all the work—washing, rinsing, bluing and drying for the line. The LAUN-DRY-ETTE has no wringer and needs none. It whirls the clothes wringer-dry without a wringer.

Come in and see the LAUN-DRY-ETTE in action. See for yourself how easily it will accommodate itself to your kitchen. Sold on easy terms.

## KELLY BROS. CO.

If it has a wringer it isn't a Laun-Dry-Ette.

LAUN-DRY-ETTE  
Electric Washing Machine  
Washes and Dries without a wringer.

# "FOR THE LAND'S SAKE"

Use "EDEN" Brand  
Pulverized Sheep Manure

We have commenced grinding and offer for sale what we believe to be the best and cheapest fertilizer this district has ever been able to get. This manure is from the Lyle sheds and has never been exposed to the weather.

It is put up in a powdered, odorless form in sacks which makes it easy to apply.

We will not have enough of this product to supply the Hood River and White Salmon districts so orders should be placed at once for fall delivery.

For berries, flowers and lawns, can be applied now; for orchards, later in the fall.

## BAKER & COE

Phone 828. White Salmon, Wash.

## BERRY GROWERS - FRUIT MEN - RANCHERS

A light used truck will pay for itself this summer. We have several complete and ready to run, for a small price.

- 1-ton International, good condition, good tires, body, windshield and 1921 license.....\$200.00
- 1-ton Moreland worm Drive, 1921 license.....\$100.00
- 1-ton Oldsmobile, 1920, electric lights and starter, looks and runs like new.....\$100.00
- 1-ton Republic, overhauled at a cost of \$250.00, nearly new tires.....\$100.00
- 1-ton Republic, overhauled, body alone worth \$300.00, will compare favorably with a new one.....\$100.00
- 1-ton Overland Delivery, good condition, fine body, electric lights and starter.....\$100.00
- 1-ton Packard, fine condition, cab and windshield.....\$100.00
- 1-ton Packard, work done cost about \$200.00. Our price now.....\$100.00
- 1-ton Chevrolet, overhauled, good body and tires.....\$100.00
- 1-ton Federal, overhauled at a cost of \$250.00, all new tires, good body and 1922 license.....\$100.00

Many others - All sizes  
THE WHITE COMPANY  
390 Flint St., Portland Ore.

# When the Mercury Soars You'll need these!

## Florence Oil Stoves

Less heat—quicker work—better disposition—better health. 500 in use in Hood River.

## Iceless Refrigerators

Keep meat, milk, vegetables, sweet and fresh longer than an ice box. No expense—large capacity.

## Canning Outfits

Steam Cookers — Pressure Cookers  
Hall Cannery

## Outing Supplies

Auto Tents — Kamp Kooks  
Bathing Suits and Caps

E. A. FRANZ CO.