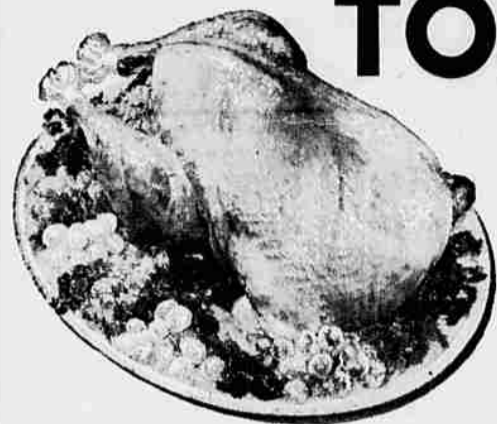


# GRAND OPENING



## TOM TURKEYS

**YOUNG**  
ESQUIRE BRAND  
BROAD BREASTED  
16 TO 20 LBS.  
Government Graded

# 33<sup>C</sup> lb.

OREGON FOOD'S  
NEWEST STORE  
545 STEVENS ST.

All Oregon Food Stores  
Will Close at 6 PM Tuesday  
& All Day Wednesday

Prices Good  
Sun, Mon, Tues.

Our sincere  
wishes to  
everyone for a  
Merry  
Christmas!

*We give  
Thrifty  
GREEN  
STAMPS*

### BAKERY SPECIALS

Westgate & Stevens Stores Only  
Baked Right in the Store

Featuring Our Own  
**FRUIT CAKES**  
No Citron — loaded with  
good fruits and nuts.

Champagne  
**CAKES**

Good Colorful Item for your  
Christmas table! **\$1.49**

Large & Deep  
Mincemeat & Pumpkin  
**8" PIES**  
Reg. 99c **85c**

Butter Flake  
**Dinner Rolls**  
**39c** Doz.



MEAT, PRODUCE, GROCERY PRICES  
EFFECTIVE AT ALL 3 STORES

U.S.D.A. Grade A  
Young Broadbreasted  
**TOM TURKEYS** **39<sup>C</sup> lb**

U.S.D.A. Grade A  
Young Brodbreasted  
**Hen Turkeys**  
**43<sup>C</sup> lb.**

Fresh U.S.D.A. Grade A  
Never Been Frozen  
**Hen or Tom TURKEYS** **49<sup>C</sup> lb**

**ROASTING CHICKENS**  
Fresh—  
Not Frozen.. **45<sup>C</sup> lb**

Oregon  
**COTTAGE CHEESE**  
Pint **19<sup>C</sup>**

Ardens  
**EGG NOG**  
Quart **49<sup>C</sup>**

White Satin  
**BROWN SUGAR**  
2 lb. Box **19<sup>C</sup>**

Arden's  
**ICE CREAM**  
Half Gal. **59<sup>C</sup>**

Clipper Tid-Bit  
**BREADED SHRIMP**  
2 lb. Pkg. **99<sup>C</sup>**

Kitchen Charm  
**PAPER NAPKINS**  
60 Count Pkg. **5<sup>C</sup>**

**SMOKED HAM** **39<sup>C</sup> lb.**  
Armour Star—Fully Cooked  
Shank Portions—We Slice Free  
You can't Buy a better Tasting Ham

**ARMOUR STAR PORTION OR WHOLE HAM** **49<sup>C</sup> lb.**

**CENTER SLICES OF ARMOUR STAR HAM** **89<sup>C</sup> lb.**

**LONG ISLAND DUCKLING** **49<sup>C</sup> lb.**

**ARMOUR STAR GRADE A JUNIOR GEESE** **69<sup>C</sup> lb.**

Fresh Pacific  
**OYSTERS**  
12-oz. Jar . . . . . **49<sup>C</sup>**

ARMOUR STAR FULLY COOKED  
READY TO EAT  
BONELESS  
**HAMS** **69<sup>C</sup> lb.**

**EGGS, AA LARGE** Farm Fresh doz. **39<sup>C</sup>**  
**ALKA-SELTZER** Reg. 59c Size **38<sup>C</sup>**

### MEDFORD'S FINEST PRODUCE

**NUTS** Your Choice **39<sup>C</sup> lb**

**ORANGES** Sweet Navel **9<sup>C</sup> lb**

**Grapefruit** JUICY RUBY PINKS **10<sup>F</sup> \$1<sup>R</sup>**

MEDFORD—545 Stevens St.  
MEDFORD—Westgate Center  
MEDFORD—13th and Central  
We Reserve The Right To Limit  
New Store Hours, 9 A.M. Through 9 P.M.  
Sunday Through Saturday  
Prices Effective Through Tuesday, Dec. 24

# Oregon FOOD STORES