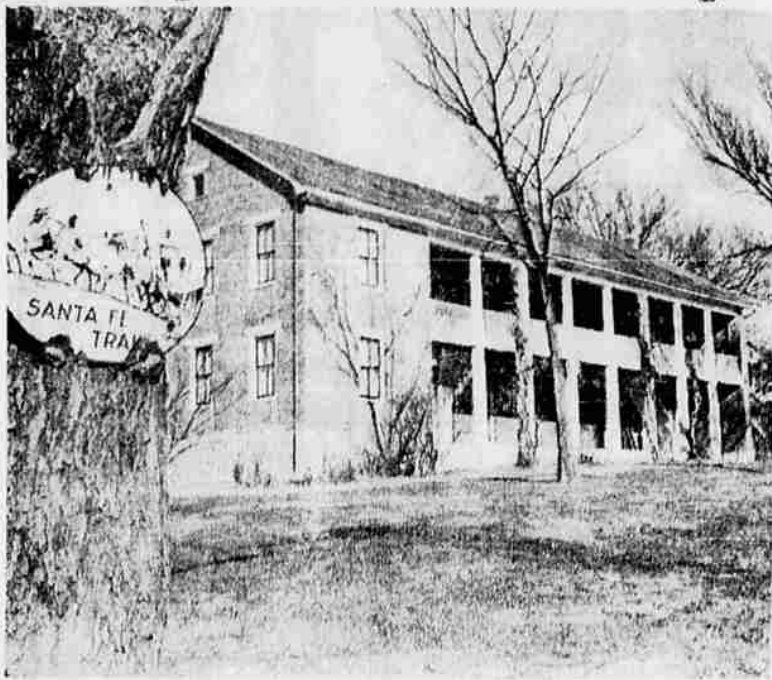


Early Missionary Built Split-Level House in Kansas



SPLIT-LEVEL NOT NEW — In Shawnee Mission, Kans., this split-level home built by the Rev. Thomas Johnson in 1829 in the wilds of the Kansas territory still stands. It is a reminder to suburbanites who regard their split-level homes as the latest in architectural design that a Methodist missionary thought of this construction long ago. (UPI)

By WILLIAM R. BRINTON
United Press International
SHAWNEE MISSION, Kan. (UPI) — The suburbanite of the 20th century may consider his split-level home the latest innovation in architectural design.

But it isn't. It harks back to the early 1800's.

A Methodist missionary, the Rev. Thomas Johnson, built his split-level home in the wilds of the Kansas territory in 1829.

The house still stands today in this Kansas City suburb. It serves as living quarters for Mr. and Mrs. A. N. Wiltz. Wiltz is the custodian and guide at the Shawnee Mission Museum operated by the Kansas State Historical Society.

Large by suburban standards, the house consisted of two stories, 100 feet long and 20 feet wide, when it was first constructed. An addition was added later and that's where the split-

level may have had its inception.

Step-down Added
The addition, 20 by 75 feet, was constructed on ground three feet lower than the front section, so a step-down was added for the split-level design.

However, the front section had 10-foot ceilings, while the rear ceilings were only nine feet high, causing a four-foot step-down in the second story.

Later, 50 feet was torn off the rear of the addition without destroying the split-level effect.

The Rev. Johnson built the house as part of the Indian Missionary School, the Shawnee Methodist Mission and Indian Manual Labor School, which was financed partly through federal grants.

In his house Mr. Johnson added such modern-day items as built-in closets and insulation.

The latter was provided by an 18-inch thick brick wall. The insulation keeps the house cool in the summer and warm in the winter.

Logs Hand-hewed
Built of hand-hewed logs and wooden pegs, the house is still in much the same condition as when it was first constructed.

Yule Spirit Carries To Parking Meters

ST. HELENA, Calif. (UPI) — The holiday spirit is rampant in this Napa Valley wine growing community 30 miles north of San Francisco. City fathers removed the tops of parking meters, inserted Christmas trees decorated by school children and proclaimed free parking through Jan. 6.

The old house heard many things, including the laughter of Indian children attending school and the cries of the first set of twins born in the territory. It provided lodgings for the first Kansas territorial governor and later the commander of Union forces, who camped at the school during the Civil War.

Two missionary teachers, the Rev. and Mrs. Jesse Greene, became the parents of the first set of twins born in the territory. The twins were born in the Rev. Johnson's house.

Andrew H. Reeder, the first territorial governor, used the house for his quarters when the Kansas territorial legislature had its first meeting in 1855 in one of the Indian school buildings. One of the starting routes of the Santa Fe and Oregon trails passed in front of the house.

Village Variety and Garden Shop

Next to Piggly Wiggly
771 Stewart Avenue

CHRISTMAS CARDS & GIFT WRAP
Seals, Tags, Etc.

POST OFFICE Open Tonight Until 9 P.M.

Religion in America

19th Century Unitarian's Words Still Painfully Familiar

By LOUIS CASSELS
United Press International

"In every earnest life there are weary flats to tread, with the heavens out of sight — no sun, no moon — and not a tint of light upon the path below; when the only guidance is the faith of brighter hours, and the secret Hand we are too numb and dark to feel."

Those words were written in the 19th century by the Unitarian theologian, James Martineau.

They describe a condition that is painfully familiar to every pilgrim.

St. Teresa called it "the dark night of the soul." Other saints, less poetic, have referred to it simply as spiritual dryness.

Darkness Aft to Fall

Their testimony is unanimous that the darkness is apt to fall, suddenly and unpredictably, on those who have walked for years in the light of faith, as well as on those who have only

recently set their feet upon the pathway.

It is always a dismaying experience, even to veterans who have been through it many times before and know that it will pass. In fact, it is probably more distressing to true saints than to the rest of us. The better you know God, the more you miss the sense of His Presence when it is withdrawn for a while.

Johnson's Christmas Cards To Carry Seal

WASHINGTON (UPI) — President and Mrs. Lyndon B. Johnson will send red and white Christmas cards embossed with the presidential seal to world leaders around the world.

The cards extend greetings for a "Blessed Christmas and a Happy New Year."

The lettering is black on a white background with a red hand at the bottom.

Why does God let this happen to those who love him?

Is it punishment for spiritual pride, a way of reminding us that we can never be good on our own, that we cannot be faithful and loving for a single hour unless He gives us the grace to do so? Some of the saints have thought so.

Sheer Fatigue

Sometimes, also, "dryness" may be brought on by sheer fatigue — including the emotional fatigue which results from caring a great deal about others.

The New Testament records that Christ Himself frequently found it necessary to disengage from the rat race of daily life, and withdraw into a quiet place for a spell of battery-recharging. If the most self-giving person who ever lived could not go on indefinitely without running dry of feelings, it is surely presumptuous for the rest of us to expect to do so.

Democrat Credits Unification for Victory in Texas

AUSTIN, Tex. (UPI) — J. J. (Jake) Pickle today credits a unifying Democrat party of Texas for his sweeping victory over conservative Republican Jim Dobbs in a special congressional election in President Johnson's home district.

Pickle, a self-styled moderate, swept all 10 counties in the district and polled 65 per cent of the total vote. With only two rural boxes out, he led Dobbs 27,206 to 16,039.

Pickle replaces Homer Thornberry, D-Tex., who resigned effective Friday to become U.S. district judge at El Paso.

Thornberry succeeded Johnson when the President moved up to the Senate in 1953.

Met Overwhelming Defeat

Dobbs carried only a few scattered boxes over the district. In other words, he met overwhelming defeat, such as Box 124 in Austin, which voted for Pickle 454 to 24.

The defeated candidate who campaigned hard against the Kennedy administration before the President was assassinated, conceded Tuesday night with a statement that "I've been pretty thoroughly beaten."

Pickle, who worked for Johnson when the President first went to Congress in 1937 from this district, called his election "a vote of confidence in the Democratic party and in President Johnson's administration."

It was the 49-year-old Pickle's first elective race, although he had been a behind-the-scenes power in Texas Democratic circles for 25 years.

Friend Of Connally

He is a close personal friend of Gov. John Connally, another political ally of Johnson's.

Observers had been watching the central Texas special election to see if the Nov. 22 assassination in Dallas would adversely affect Texas' trend toward conservatism.

Texas Democrats had split in conservative and liberal wings in recent elections. This split appeared to be gradually widening before last month's shootings. One of Kennedy's underlying motives for coming to Texas was to soothe the two factions.

After the President was slain, party leaders called for unity and pleaded for an end to the party squabble. Tuesday's voting in this congressional district reflected closing of ranks.

Dinah Washington's Rites Draw Throng

CHICAGO (UPI) — With thousands of persons gathered outside in bitter cold weather, funeral services were held for blues singer Dinah Washington Wednesday in the church in which she was baptized.

Three thousand persons filled St. Luke Baptist Church and 7,000 to 8,000 others surrounded the church on Chicago's South Side during the 2½-hour service.

Burial was in Burr Oak Cemetery. Miss Washington, 39, died in her Detroit home Saturday. Her seventh husband, Dick (Night Train) Lane, 35, defensive star for the Detroit Lions football team, found her body when he awoke. Authorities said she apparently took an overdose of pills from a bottle found nearby.

Kennedy Eulogies To Be in Booklet

WASHINGTON (UPI) — The Senate Rules Committee will publish a special booklet containing all congressional eulogies for President Kennedy.

Similar volumes were assembled on the death of Franklin D. Roosevelt and Woodrow Wilson.

GRAY'S BRINGS YOU \$100.00 SAVINGS ON... YOUR CHOICE: NYLON OR PLASTIC Foam Cushioned day and night Sofas 11 WONDERFUL PIECES

Reclining Lounge Chair Included

\$500 HOLDS YOUR SELECTION

SAVE \$100 YOUR CHOICE \$299 NO MONEY DOWN

Included NYLON & VINYL RECLINING LOUNGER

★ REST
★ RELAX
★ RECLINE

Choice of Sofas

No Money Down ONLY 9.90 PER MONTH ON GREYS EASY TERMS

GRAY'S FURNITURE BARN, INC. CENTRAL POINT

HWY. 99

WEISFIELD'S feature FOR Christmas Longines

THE WORLD'S MOST HONORED WATCH

A. LOVELY WITNAUER 17-JEWEL "CO. ED." wins top honors every year with shockproof movement, unbreakable mainspring, anti-magnetic, yellow gold-color case and slim matching expansion bracelet. TERMS LOW AS 4.00 A MONTH STARTS JANUARY, 1964 \$35.95

B. HANDSOME WITNAUER 17-JEWEL "ARMADA" is right on time and right in fashion whether it sizzles or drizzles because it's automatic, all-proof, with gold color case and matching expansion bracelet. TERMS LOW AS 5.00 A MONTH STARTS JANUARY, 1964 \$65.00

C. LONGINES LADY'S 17-JEWEL "WORLD'S FAIR" A smash success with teardrop shape 14-karat yellow gold case, matching expansion bracelet, shockguard, anti-magnetic, unbreakable mainspring. TERMS LOW AS 7.00 A MONTH STARTS JANUARY, 1964 \$110.00

D. WITNAUER MAN'S 17-JEWEL "DIPLOMAT" The watch that counts wherever dependability and good taste are important. Anti-magnetic, unbreakable mainspring, shockguard and expansion band. TERMS LOW AS 5.00 A MONTH STARTS JANUARY, 1964 \$49.50

☆ A LONGINES-WITNAUER PRODUCT

THE WEST'S LEADING CREDIT JEWELERS

WEISFIELD'S

Open Evenings Until 9 P.M.

Medford Shopping Center Acres of Free Parking Phone 772-5348