



PIGGLY WIGGLY



PIGGLY WIGGLY

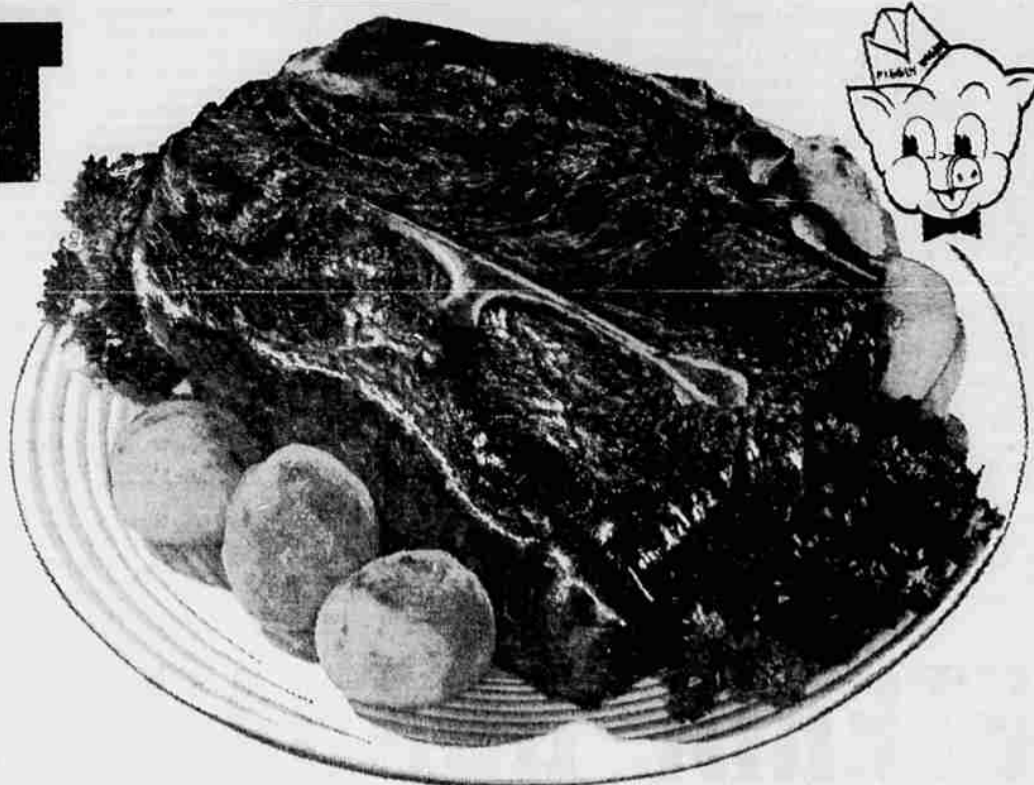


POT ROAST

U.S.D.A. Choice or Swift's Premium blade cut beef pot roast cut from slowly-aged beef for more flavor and tenderness. Serve pot roast and browned potatoes for an economical dinner this weekend.

39^c

lb.



Chuck Steak

U.S. Choice or Swift's Premium

49^c
lb

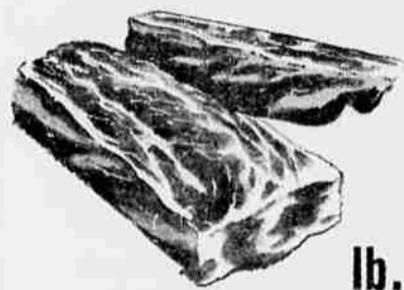
Ground Round

1-lb. pkg. **39^c**

3 L \$1⁰⁰
B
S

Lean and Meaty Pork

Spareribs



39^c

lb.

- U.S. Choice or Swift's Premium 7-Bone Chuck Roast lb. 49c
- U.S. Choice or Swift's Premium Boneless Chuck Roast lb. 69c
- U.S. Choice or Swift's Premium Lean Rump Roast lb. 79c
- U.S. Choice or Swift's Premium Standing Rib Roast lb. 79c
- U.S. Choice or Swift's Premium Boneless Beef Cubes lb. 79c
- U.S. Choice or Swift's Premium Beef Short Ribs lb. 39c
- U.S. Choice or Swift's Premium Plate Boiling Beef lb. 25c

Medium Sharp **CHEDDAR CHEESE**
lb. 69c

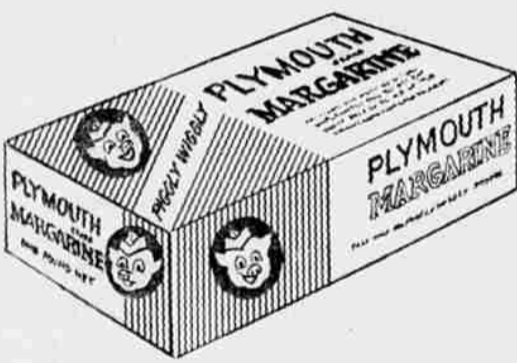
From the Pacific **JUMBO PRAWNS**
lb. \$1²⁹

Open-Eye **SWISS CHEESE**
lb. 79c

Del Monte Skinless **LINK SAUSAGE**
1-lb. pkg. 49c

- U.S. Choice or Swift's Premium Beef Rib Steak lb. 89c
- U.S. Choice or Swift's Premium Full-Cut Beef Round Steak lb. 89c
- U.S. Choice or Swift's Premium Boneless Top Round Steak lb. 98c
- U.S. Choice or Swift's Premium Beef Cube Steak lb. 98c
- U.S. Choice or Swift's Premium T-Bone Steak lb. \$1.19
- U.S. Choice or Swift's Premium Boneless Top Sirloin Steak lb. \$1.39
- From Mountain Streams Rainbow Trout Package of 3 69c

PLYMOUTH MARGARINE



8 \$1⁰⁰

1-lb. pkgs.

Chase & Sanborn

Instant Coffee

Big King Size 12 oz. Jar Regular \$1.49

89^c

Plus S & H Green Stamps

Oregon State Is Chosen To Help Teacher Training

CORVALLIS — For the eighth straight year, Oregon State University has been chosen by the National Science Foundation to help spearhead the training of U.S. high school science and mathematics teachers.

A grant of \$271,000 has been awarded OSU by NSF to conduct another Academic Year Institute for teachers during the 1964-65 school year.

The institutes are part of the National Science Foundation program aimed at upgrading science and mathematics teaching in the United States and increasing the number of top-quality teachers and scientists.

OSU was one of 15 leading U.S. universities picked to start the training programs in 1957. It has been on the select list each year since. Next year, 57 universities will offer institutes with 1,750 teachers enrolled. About 1,625 will be high school teachers and 125 college teachers.

Take Advanced Training
Forty teachers will take the advanced training at Oregon State. They will be drawn from the biological sciences, mathematics, physics, general science and chemistry.

Each of the teachers chosen for the training will receive \$3,000 grants plus allowances for dependents, books and travel. Twenty-seven also will receive grants for summer school in 1965. Some 700 applications were received by OSU for the 46 spots in this year's institute. The 46 teachers are from 22 states.

The teachers take special graduate level courses in science and mathematics and most will be able to complete requirements for an advanced degree.

The OSU institute is one of the three largest in the nation. Dr. Stanley E. Williamson, head of the Science Education Department, is director. He is also president this year of the National Science Teachers Association.

Second Probe of Hoffa Continues

NASHVILLE, Tenn. (UPI)—A federal grand jury Wednesday continued an unexpected second investigation of the case which led to indictment of Teamsters President James R. Hoffa on jury tampering charges.

In a surprise move Tuesday, the panel reopened its probe of the 1962 trial in which Hoffa was charged with conspiring to receive a \$1 million kickback from a trucking firm.

The case ended in a mistrial when the jury failed to reach a verdict. But the trial judge ordered a grand jury investigation, which resulted in the indictment of Hoffa and six others on jury tampering charges.

The grand jury reconvened here Monday to consider evidence of alleged attempts to "fix" the second Hoffa trial. Two federal judges disbarred a Hoffa attorney on grounds he attempted to bribe a prospective juror.

However, the probe took an unexpected turn back to the 1962 conspiracy trial when three members of the jury which heard that case were summoned to testify. The husband of a fourth juror in the case also was subpoenaed.

Although grand jury testimony is not made public, it was believed the panel was examining new evidence in the case which led to Hoffa's jury tampering indictment.

If convicted of the charges, Hoffa could be sentenced to 25 years in prison and fined \$25,000. The union leader also is awaiting trial in Chicago on charges of missing Teamsters pension funds.

Bailey Asked to Remain as Chairman

WASHINGTON (UPI)—President Johnson has asked John M. Bailey to stay on as Democratic national chairman to prepare for the 1964 election campaign, it was disclosed Wednesday.

Bailey said the President called him to the White House late Tuesday and requested him to stay as boss of the party's national headquarters.

Bailey said he replied that he would be happy to stay and was gratified by the vote of confidence given him by Johnson.

Bailey was the late President John F. Kennedy's choice when he was elected to the chairmanship in January, 1961. A White House source said Johnson's invitation to Kennedy appointees to remain with the new administration included Bailey and other key officials in the party headquarters.

LEAD DOGS
NOME, Alaska (UPI)—Most Eskimos maintain that the smallest in a litter of husky pups is usually the most intelligent and makes a good lead dog for a sled team.

Madera Giant **RIPE OLIVES**
No. 1 Tall Tin
Reg. 39c **4 \$1⁰⁰**
tins

Del Monte **PINK SALMON**
No. 1 Tall Tin **49^c**

- Instructions on Each Package
- Parowax for Candles 5 1-lb. \$1.00
 - Dundee Tomatoes 5 No. 303 tins 99c
 - Peppermint-Parfait Carnation Ice Cream half gal. 89c
 - Nabisco Sugar Honey Graham Crackers 2-lb. pkg. 65c
 - Powdered Trend Detergent giant pkg. 39c
 - Spice or Chocolate Metrecal Wafers pkg. 89c
 - Assorted Flavors Liquid Metrecal 6 8-oz. tins \$1.59

Planters **MIXED NUTS**
1 1/2-oz. Tin Regular 89c **59^c**

Pet Instant **MILK**
12-Oz. Pkg. Regular \$1.09 **89^c**

Folger's Coffee
2-Lb. tin \$1¹⁷
1-lb. tin **59^c**
Folger's Instant 10-oz. jar \$1.29

ZEE Bathroom Tissue
4 Roll Pkg. **16 \$1⁰⁰**
rolls
Plus S & H Green Stamps

Piggly Wiggly
Save as You Spend With S & H GREEN STAMPS

Prices effective December 5, thru Sunday, December 8. Limit rights reserved.
Stewart at King Open Til 9 P.M.