

4-H NEWS

Lone Pine Livestock
The Lone Pine Livestock 4-H Club met at the home of Joe Waiser Saturday.
Plans for a candy and cake sale to be held in December were discussed.
Members talked about livestock and discussed the advancement program test that will be given at the next meeting.
David Waiser Reporter

SAN FRANCISCO (UPI)—Despite efforts by fishermen, steelhead trout often live to be seven years old.

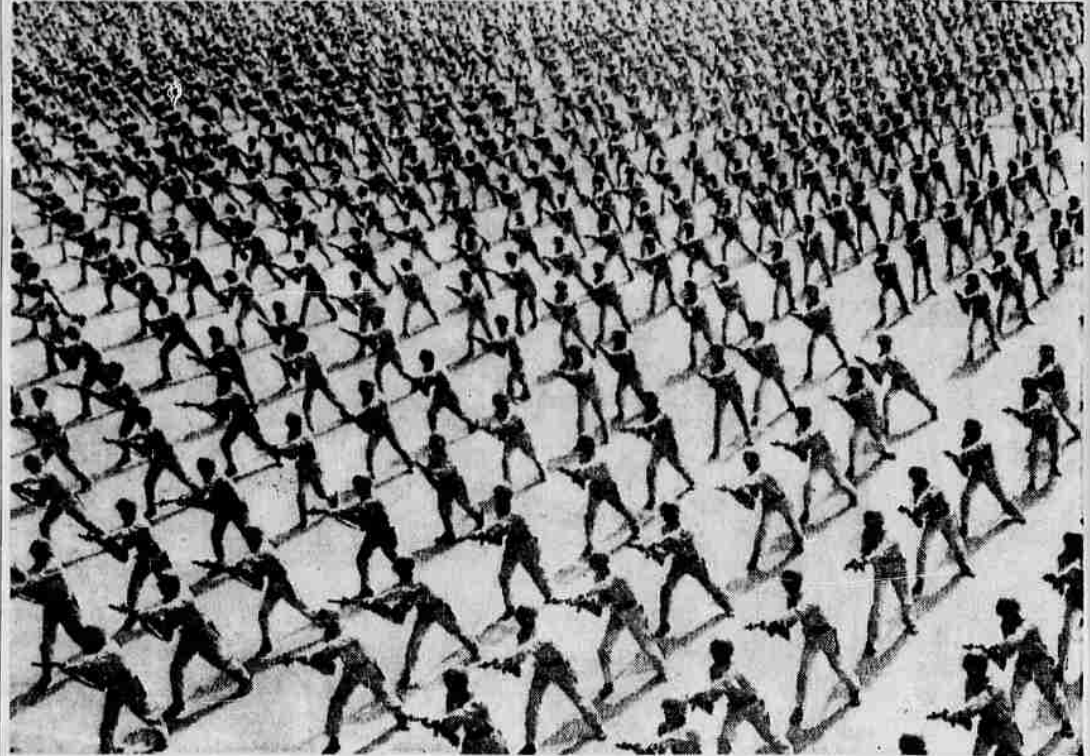
New Dimension Given War With Reds

By KENNETH GALE
United Press International
TAIPEI, Formosa (UPI)—Generalissimo Chiang Kai-shek's unceasing war with the Communists has taken on a new dimension: Stepped up Nationalist guerrilla operations on the Communist-controlled mainland.
They constitute the first organized military offensive against the Communists since Chiang was driven into semi-exile on this island 90 miles off the China coast in 1949.
They started in March of last year as a probing operation, to test Communist security and see just how far the Nationalists could go.

It was small-scale stuff at first. A few especially trained agents slipped into the mainland by getting past the barbed wire and watchtowers overlooking Hong Kong or Macao, by padding ashore in rubber boats under cover of night, or arriving brazenly in junks.
The guerrilla warfare was inspired in part by intelligence reports indicating some unrest in scattered parts of the mainland.
One document captured from the Communists listed a total of 752 "anti-revolutionary incidents" during 1962. Most of them were "reactionary propaganda" cases, like chalking slogans on walls. But 64 were more serious, ranging from inciting riots to blowing up ammunition dumps.
And so the guerrillas were sent in to do their delicate, dangerous work. That they did it well can be judged by the Communist reaction, which was loud and lengthy, claimed that the guerrillas were hirelings of American imperialism and that their inevitable fate was death, capture or desertion.
The Nationalist are understandably reticent about the fate of their agents, once committed. They have admitted that some were killed. Some undoubtedly surrendered either willingly or unwillingly and were taken off to be shot or re-indoctrinated. Some, certainly, got safely back to Formosa for long and vital debriefings.

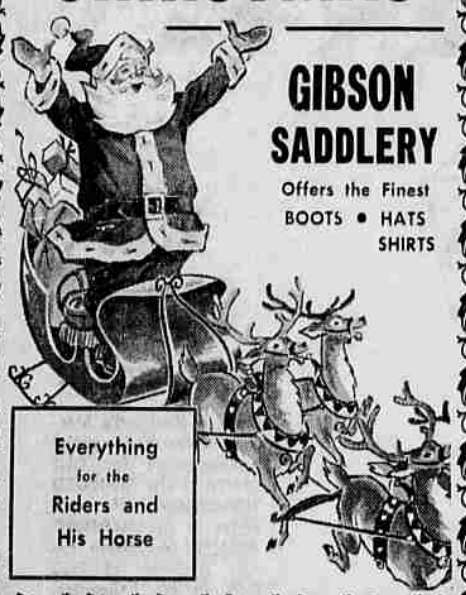
More Agents Infiltrate
At the end of 1962, the project was suspended, at least as far as is known. Nationalist intelligence men pored over the information that had accumulated. They made a thoroughgoing evaluation. Apparently it was encouraging, for guerrilla operations were resumed in June — at twice the scale as before.
In the five-month period from June through last month, 912 agents had infiltrated the mainland — 38 more than for the 10-month period of March-December of last year.
In 44 groups, they fanned out all the way from Canton in the south to Peking in the north. The Nationalists claim that for the most part they were "jubilantly received" by the people and were getting more and more cooperation.
Their place in the Nationalist design for "counterattack" could be found in Chang Kai-shek's policy of an effort "70 per cent political and 30 per cent military" for recapturing the mainland.
Chiang has said many times that he would need the overwhelming support of the people to whip the Communist in any mainland venture.
One of the guerrillas' most important military tasks is to set up a communications and espionage net. Equally important is the job of certain agents in disseminating propaganda and discontent. They are assigned to help create the "atmosphere of rebellion" which Chiang has said is the key to a successful return.

Decline Evaluation
American intelligence men decline to give for publication their evaluation of the guerrilla program. They limit themselves to saying that the operations, although very small, have been well-planned and well carried out.
The U.S. military assistance advisory group (MAAG) trains an undisclosed number of Nationalist troops in guerrilla warfare at training areas on Formosa.
But the Nationalists insist that every agent they send to the mainland is trained in secret by their own people and receives no U.S. military assistance.
It is believed that roughly 10,000 special agents have been trained.
Chinese Supervision
Some have been trained under strictly Chinese supervision on two small island groups in the Formosa Strait, Tungyin and Wuchiu. Tungyin is 35 miles north of Nationalist-held Matsu Island.
The main island is not quite two square miles in area.
Like the more famous offshore islands of Quemoy and Matsu, the fortifications of the Tungyins are dug into formidable natural rock formations. The military buildup was done without U.S. aid. The aid was offered but, in this case, declined with thanks.
Wuchiu consists of two tiny islands, each about a quarter the size of Tungyin Island, and located between Quemoy and Matsu, about 18 miles off the mainland coast.
Very little is known about what goes on at either group, but assuredly the purpose of the work is to create unpleasantness for China's Communist regime.



NEW DIMENSION — Generalissimo Chiang Kai-shek's unceasing war with the Communists has taken on a new dimension: Nationalist guerrilla operations on the Communist-controlled mainland. This 1962 picture shows some 10,000 Nationalist soldiers going through bayonet exercises in northern Formosa. (UPI)

Enjoy a Real WESTERN CHRISTMAS



GIBSON SADDLERY

Offers the Finest
BOOTS • HATS
SHIRTS

Everything for the Riders and His Horse

SEEDS OF WEALTH
LOS ANGELES (UPI)—Seeds worth 17 times their weight in gold are part of California's \$30 million seed industry. The hybrid double petunia seeds sell for \$600 an ounce. An ounce contains about 280,000 of the tiny seeds.



GREETING MOTHER — Maria Benedyk, 21, center, whose real name is Dina Futersak, greets her natural mother, Mrs. Sabrina Futersak, with a kiss during a joyful reunion at New York's Idlewild Airport. They had been separated for 21 years when Mrs. Futersak had to flee Nazi German persecution during World War II. Looking on at right is Mrs. Wladislaw Benedyk, Maria's foster mother, who raised and cared for her since she was seven months old. (UPI)

For Distinctive Gifts—
Big or Small . . . for
Every Budget . . .

Visit Big Pine's FIREPLACE CORNER

If you are tired of giving "run-of-the-mill" gifts why not give the fireplace owner a useful and unique gift . . . an accessory from our "Fireplace Corner"? There is a wide variety of items, and a large selection, too! Why not choose NOW?

SPECIAL SALE!



Franklin Fireplace Heaters

The most economical and practical fireplace on the market — burns like a fireplace — heats like a stove! No expensive masonry needed — just fits to your existing flue. Wonderful for early American settings or for the den, family rooms and vacation home, too! Each complete with boot and grate.

FREE! Limited Time Only

With your purchase, YOUR CHOICE of Reg. 15.95 Fireguard Screen or 100 Presto-Logs!

- Tools
- Screens
- Bellows
- Matches
- Carriers
- Buckets
- Tool Sets
- Lighters
- Brooms
- Grates
- Baskets
- Fireplace Barbecue Grills
- Wood Carts
- Boxes
- Treated Pine Cones for Colored Flames
- Color Crystals, Etc.

All types of screens to fit every fireplace—even unusual shapes & sizes



BIG PINES LUMBER COMPANY

Corner 6th and Fir PH. 773-5333

Whee.. a free Christmas Shopping Spree at Regal!

WIN!

REGAL SERVICE STATIONS LET YOU WIN EVERYTHING ON YOUR...

Make out your shopping list, including Regal's Discount Prices, and deposit it in the box at your neighborhood Regal Service Station. The total value must not exceed \$100. Be sure and include your name, address and telephone number on the list. On December 21st one list will be drawn and the winner notified to come pick up everything on their list. Purchase not required. Presence not necessary to win. It's fun, it's easy, and you can enter as often as you like.



TURNER PORTABLE PROPANE HEATER

Infinite heat from low to high setting for inside or outside. 2,900 BTU's per hour—almost twice as much as others. 360° handle allows to stand or hang in any position. Two extra tanks of fuel free. Retail Price \$34.95.

REGAL \$23.95

BEACON ELECTRIC BLANKETS

Size	Retail	REGAL
Twin Size	\$14.95	\$ 9.88
Double Size	19.95	11.88
Double Dual	24.95	13.88

REGAL \$12.95

POPULAR REVERSE WARE

Item	Retail	REGAL
Double Boiler	\$11.50	\$6.99
Sauce Pan	6.75	3.49
Sauce Pan 2 qt.	8.25	4.49
Tea Kettle 3 qt.	6.95	3.99
Fry Pan 8"	4.95	3.49

HAMILTON BEACH GIFTS

Item	Retail	REGAL
Mixerette Port. Mixer	\$16.95	\$11.88
Deluxe Chrome Mixer	22.95	16.88
Two-Slice Toaster	22.95	16.88

COLEMAN FOR CAMPING

Item	Retail	REGAL
Single Mantle Lantern	\$15.95	\$10.95
Gallon Jug with Spout	6.95	3.95
L.P. Picnic Stove	11.95	8.99
7-Gal. Cooler	19.95	10.75

GILBERT TOYS

Item	Retail	REGAL
Erector Set	\$ 1.30	\$.98
2.98	2.22	1.98
4.98	3.96	3.48
6.98	5.46	4.98
8.98	6.96	6.48
10.98	8.46	7.98
12.98	9.96	9.48
14.98	11.46	10.98
16.98	12.96	12.48
18.98	14.46	13.98
20.98	15.96	15.48
22.98	17.46	16.98
24.98	18.96	18.48
26.98	20.46	19.98
28.98	21.96	21.48
30.98	23.46	22.98
32.98	24.96	24.48
34.98	26.46	25.98
36.98	27.96	27.48
38.98	29.46	28.98
40.98	30.96	30.48
42.98	32.46	31.98
44.98	33.96	33.48
46.98	35.46	34.98
48.98	36.96	36.48
50.98	38.46	37.98
52.98	39.96	39.48
54.98	41.46	40.98
56.98	42.96	42.48
58.98	44.46	43.98
60.98	45.96	45.48
62.98	47.46	46.98
64.98	48.96	48.48
66.98	50.46	49.98
68.98	51.96	51.48
70.98	53.46	52.98
72.98	54.96	54.48
74.98	56.46	55.98
76.98	57.96	57.48
78.98	59.46	58.98
80.98	60.96	60.48
82.98	62.46	61.98
84.98	63.96	63.48
86.98	65.46	64.98
88.98	66.96	66.48
90.98	68.46	67.98
92.98	69.96	69.48
94.98	71.46	70.98
96.98	72.96	72.48
98.98	74.46	73.98
100.98	75.96	75.48

REGAL SERVICE STATIONS DRIVE-IN SAVING STORES

"Stretch your Pay the Drive-in Way!"

1006 SOUTH RIVERSIDE — MEDFORD
525 NORTH CENTRAL — MEDFORD