



MEDFORD PLANT — The oil-gas plant near Phoenix was dismantled when district butane-air gas plants were built. The above is one of four completed in Medford during 1936. It was located at 519 N. Front St., the location of the present propane-air plant and one of the regulator stations which will provide natural gas service. The above picture was

taken in 1938 at the time a third liquid butane storage tank was installed. Three additional butane tanks were installed during later years to provide a total storage of 105,000 gallons of fuel. Seven 30,000-gallon liquid propane tanks, installed since the war, are still in place to provide for tank gas customers served by the company.

Selecting Right Water Heater May Not Be Difficult Problem

Selecting the right water heater for your family need not be difficult.

The local gas company or gas appliance dealer will help you work out the exact requirements. They'll take into consideration the size of family, the number of hot water consuming appliances you now own or plan to add in the future, how frequently you entertain, and similar details that can affect your hot water demands.

By estimating future as well as present needs, gas company experts can recommend the proper size and type of heater best able to keep you abundantly supplied with hot water for years to come. Tank linings, too, must be taken into consideration since local water con-

ditions can shorten the life of certain lining materials.

Location of the heater is another major decision. It should be as near the place of greatest use as possible and still be convenient for changing temperature settings.

Gas heaters are easily installed in a closet in the kitchen, in the utility room, laundry room, or almost anywhere the homeowner prefers. Some gas

units now have remote controls for increasing or decreasing the temperature of the water. And, of course, the units are fully automatic, turning themselves on and off without any help from the homeowner.

In most instances, a 30 or 40-gallon gas heater will meet the average family's hot water requirements. The size will depend in great part on the BTU rating of the unit. For example,

a 30-gallon gas water heater with a 35,000 BTU input will deliver as much hot water per hour as a 40-gallon gas heater with a 30,000 BTU rating. And both will supply 81 gallons of hot water in two hours which is enough for three loads of laundry in a 25-gallon capacity washing machine and still leave six gallons for other household needs.

Larger Amounts of Water

If larger amounts of hot water are desired, a 40-gallon heater with a higher BTU input will increase the hot water proportionately. Unusually high requirements may call for a 50 or 60-gallon gas heater with relatively high BTU ratings. Thus, tank size indicates storage capacity and BTU input the rate of recoverability. When the two factors are compatible, the heater can deliver specific amounts

of hot water quickly and efficiently. The selection of a gas-fired heater offers numerous advantages. There are no storage or delivery problems, no peak period restrictions or stormy weather worries. Gas is clean and it's an economical means of heating water. It has won its place as America's preferred water heating fuel in millions of homes.

New Gas Water Heater Available

A remarkable new gas water heater that will grow with the family has been introduced by the gas industry.

Called "30-Plus," the new heater can be adjusted to perform as a 30, 40 or 50-gallon unit. Yet it takes up no more space than a conventional 30-gallon tank.

To increase or decrease the amount of hot water wanted, the homeowner simply moves a dial on the front of the heater to any setting between 30 and 50. An optional feature makes dial setting even simpler. It's a remote control thermostat that can be installed in the bathroom, laundry or kitchen. Immediate response is assured since the new gas heater is capable of handling from 37,000 to 60,000 BTU's.

According to the American Gas Association, the new gas unit can fulfill the entire range of hot water requirements throughout the life of the family.

New Demands for Refrigerator, Freezer Create More Problems

New demands for refrigerator and freezer space are creating a difficult problem for today's homemaker.

The American Gas Association has come to her rescue with this guide for estimating capacity: Figure on four cubic feet for two adults plus two cubic feet for each additional family member and add two cubic feet for entertainment needs. A family of three, four or five persons, also needs four cubic feet of freezer space.

The freezer space required for a family of five, can be reduced by half, however, if you have a family-size gas refrigerator-freezer combination.

Reason for Reduction

The reason, AGA explains, is because meat can now be kept in the refrigerator compartment for a week or more without having to be frozen. The jet cold meat keeper is designed to keep even hamburger fresh

and moist for a period of eight days.

If the homemaker plans to keep a roast for several months, then it should be kept in the freezer compartment. On some gas models, the freezer will hold up to 92.4 pounds of frozen food.

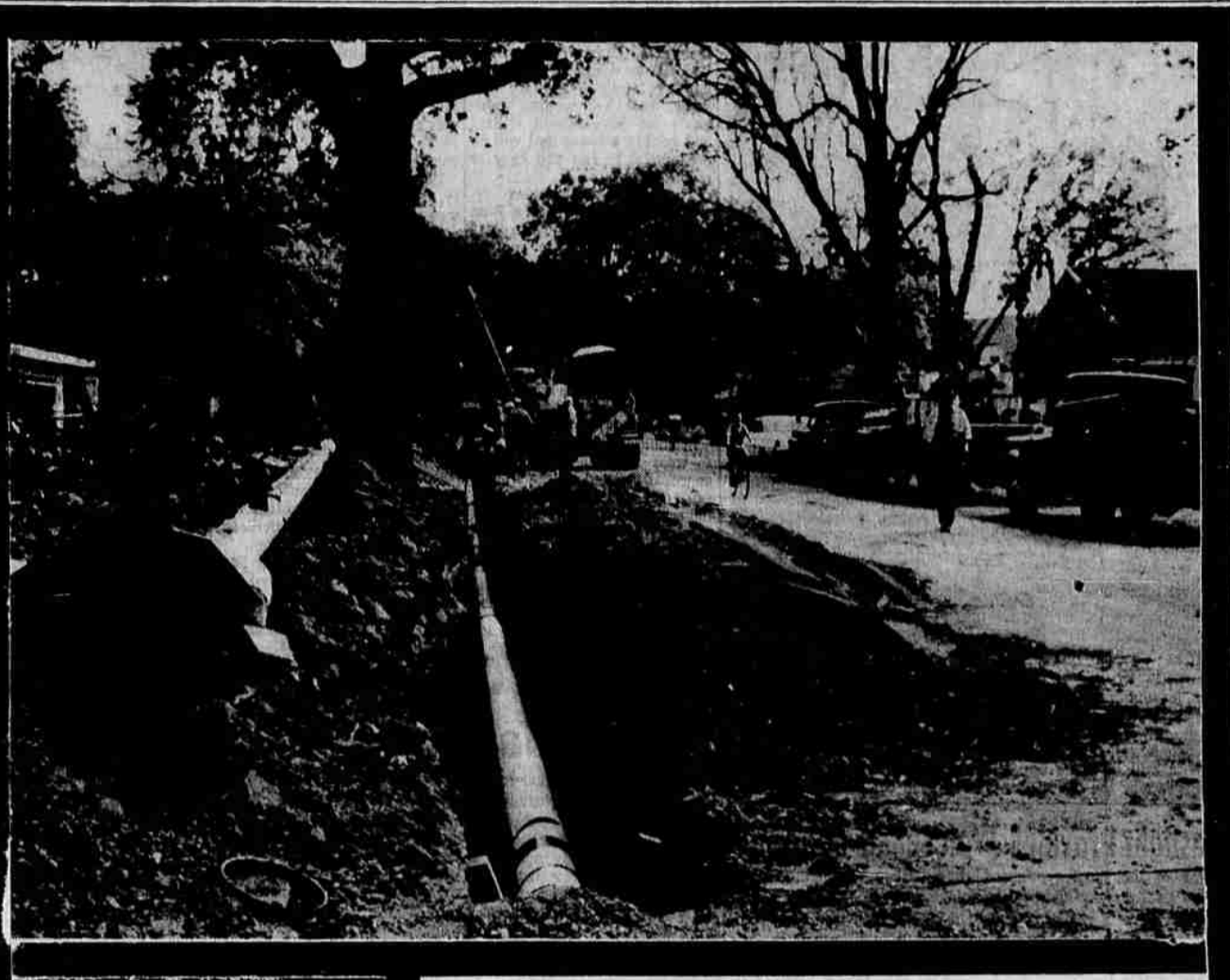
Generous storage space is also provided in the gas refrigerator compartment with the added advantage that various degrees of cold can now be maintained inside the same storage area. This means that milk and meat, which require low temperatures can be kept inside the same box with fruits and vegetables that require a higher temperature and humidity.

Stored for Weeks

Until recently, it wasn't possible to keep each type of food at the temperature best suited to it. Now, however, the American Gas Association reports, lower and more varied temperatures are an important feature on new gas refrigerators. Butter can be stored for sev-

DIES IN FIRE

AURORA, Ore. (UPI)—Lawrence Steve Adelman, 49, Aurora, was killed Monday in a fire that destroyed a storage shed at his residence.



PLUMBING



Modern
PLUMBING &
SHEET METAL CO.

NATURAL GAS IS HERE!
30-Gallon GAS WATER HEATER

(Save On Monthly Bills)
59⁵⁰

SPECIAL

GAS HOOK-UP ITEMS

BLACK PIPE		GAS COCKS	
1/2"	14¢ ft.	1/2"	1 1/4"
3/4"	18¢ ft.	3/4"	1 1/2"
1"	26¢ ft.	1"	2"

Metal Bestos Double Wall Pipe for Gas Vent
All Sizes 3" Through 6"

Now that Natural Gas is a reality in the Rogue Valley, a lot of you folks will be wanting Gas heating, Gas Dryers, etc.

Modern has the equipment, know-how and qualified men backed by years of experience to do a complete and satisfactory job.

Check with an old reliable firm before you buy your furnace or duct job.

Complete Sheet Metal Shop—Bring Your Sheet Metal Problems To Us.
OPEN 8 A.M.-5 P.M. SATURDAY FOR YOUR Shopping Convenience

613 E. Jackson Phone 773-5368
IN THE MEDFORD SHOPPING CENTER

Gas Furnace Can Save Home Space

Space-saving is one of the most important elements of furnace design today, the American Gas Association points out.

An up-to-date gas furnace capable of heating the average size home, takes up no more space than a water heater. This has the advantage, AGA says, of giving architects, builders and homeowners complete flexibility in designing new homes and modernizing older ones.

Compact styling of modern gas heating equipment has been a major contributor in the development of both basement recreation rooms and homes without basements.

The modern gas heating plant fits in as little as 2 1/4 square feet of floor space—and doesn't even have to be in the basement.

"Zero-clearance" gas furnaces can be installed so that sides and back touch walls. Insulation keeps the cabinets cool to the touch.

Choice of location is almost unlimited. They can be installed in a vertical position on the floor or in a horizontal position suspended from the ceiling.

If the house lacks a basement, the furnace can be installed in the attic, crawl space beneath the house or in an attached garage.

Fully automatic gas heating systems also eliminate the need for storage facilities since gas is delivered directly to the furnace by underground pipes. Other advantages are cleanliness, economy and dependability.

Airplane Base Is Denied by Board

SALEM (UPI)—An application for a combined seaplane and landplane operation on Hayden Island near Jantzen Beach in Portland was denied Monday by the State Board of Aeronautics.

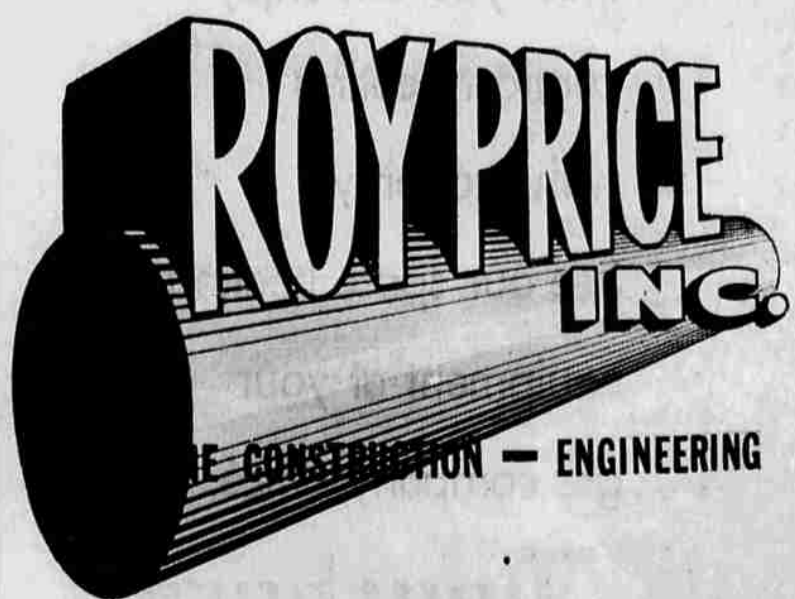
Roger Loennig, chairman of the board, said it recognized the need for a handy seaplane base in the Portland area. But the board rejected the application because it failed to meet its airport standards and because of danger to air and water traffic.

Roger Knight of Vancouver, Wash., made the application. He said he would seek a more suitable site.



Roy Price, Inc. is proud to be a part of the great natural gas industry in the Rogue Valley

Our congratulations to California-Pacific Utilities and El Paso Natural Gas Company on the dedication of their new natural gas service to Medford and the Rogue River Valley. The Rogue Valley is a great place to live and is known throughout the world for its fine fishing, forested hills and mighty rivers. Now, another energy source is introduced to this growing area that is not only clean and efficient, but the most economical fuel also. This great addition to Southern Oregon is welcome and we're proud to have had a part in bringing the service to this area. We would especially like to extend our thanks to Mr. Vic Lyman, Mr. Steve Richards, Mr. Murray Neal and their associates. All of these California Pacific Utilities Company people extended their full and vital cooperation in helping us lay the gas line. We have enjoyed working in this area and plan on establishing a division in the Medford area for future pipeline projects in the States of Oregon and Washington.



Congratulations . . .
CALIFORNIA-PACIFIC UTILITIES COMPANY

Gas, Water, Oil and Products Pipelines