



**WASHER-DRYER** — This new gas washer-dryer automatically dispenses bleach and fabric conditioner during the wash and rinse cycles. Special setting is provided for wash and wear items.

### Women Not Interested in Returning to Good Old Days of Hanging Laundry Out

Down through the ages, one way of judging a homemaker was by the appearance of her laundry hanging on the line. Signs of "tattle tale gray" tagged the laundress a poor housekeeper while clothes that were sparkling white or brightly colored won her the respect of her neighbors.

But times have changed. Clotheslines are fast disappearing from the American scene. Modern women no longer trudge out to the backyard with baskets of wet wash. Instead, they dry the laundry indoors, in modern gas appliances.

Gas industry home economists in interviews with thousands of women using gas dryers and washer-dryer combinations have yet to find one who would willingly return to clothesline drying. In fact, American Gas Association reports, women say their dryers are indispensable.

#### Young Mother Delighted

A young mother with a new baby is delighted because she is saving both time and money. "I have more time to tend the baby and it's amazing how few diapers, sleepers, and baby clothing I need. An entire load of diapers takes only 15 minutes to dry. I figure that the money saved on baby garments is helping to pay for the machine."

An efficient career woman explains that she does the laundry while preparing the family's evening meal. "I simply load the machine and go about my business. Later, while the dishes are being washed, I fold the clothes and put them away. On occasion, I wash very late at night or early in the morning. I just pick the time that suits me, not the weather."

A mother with a cardiac condition calls her gas washer-

dryer her "heart saver." "It's in a bathroom adjacent to the bedrooms where most soiled items accumulate and saves me countless steps. I never have to touch the clothes from the moment I load the machine until they're dried and ready to be put away. And I practically never have to iron any more. We use mostly synthetic fabrics and they come out of the dryer ready to wear."

**Keeps Track of Hours**  
A busy mother interested in community activities kept track of the hours she saves with a gas dryer. "It came to approximately 156 hours last year, or a dividend of three hours each week that I now devote to important community projects. Best of all, I still have more time and energy for my family."

A mother with a large family is especially happy with her gas

dryer because it keeps her caught up with the laundry and cuts the family's clothing needs by half. "My dryer is going constantly. I use it for everything. On stormy days, I dry the children's boots, raincoats and snowsuits while they eat lunch. Everything's ready for the trip back to school and one set of outer clothing is all they need."

And there's the mother who calls her gas washer-dryer "husband-proof." It's equipped with a special control that automatically regulates temperatures and drying times to suit each type of load, eliminating all possibility of over-drying. "Now I can let my husband do the laundry on those occasions when I have to be away from home. He can't possibly guess wrong, even if he tosses a pair of dungarees in with the sheets. Everything comes out of the dryer just right."

### More Power Planned For Radio Stations

**NEW YORK (UPI)** — Two 10,000-watt transmitters will soon be installed in the Philippines, site of the Christian Radio Network.

The overseas radio and mass communications committee of the National Council of Churches, RAVEMCCO, also reports that the transmitter of Station DYCR at Dumaguete City will be stepped up from 5 to 10 kilowatts "to beam the Christian message to areas not yet reached."

On the air since 1950, DYCR broadcasts more than 100 hours weekly of news, music, public interest and religious programs.

#### PARKING PROBLEM

**OAKLAND, Calif. (UPI)** — A Kaiser Industries study showed that all the people who now use mass transit to commute from New Jersey to New York switched to autos it would take all of Manhattan below 42nd Street just to park their cars.



**CAP PLANE CRASHES** — Flames roar from the wreckage of a burning twin-engine Civil Air Patrol plane in front of a home at Amityville, N. Y. The aircraft, which had three persons aboard crashed into two homes during takeoff on what was presumably a training flight. All aboard were killed, authorities said. (UPI)

### Holiday Program Starts by Army

"Share With a Child," a program recently initiated to provide clothing, food and toys for less fortunate children during the Christmas season has been announced through the Salvation Army. The program is sponsored by General Mills, Inc.

Edwin W. Rawlings, president of General Mills recently presented a check for \$100,000 to the Salvation Army for the purpose. In addition, special collection containers will be on display in grocery stores from coast to coast for consumers to deposit corporate symbols from General Mills products.

General Mills will contribute two cents for each symbol toward the Christmas project. If the symbols collected have a redemption value beyond the \$100,000 guarantee, the company will contribute a larger amount to the Salvation Army, according to the release.

The local Salvation Army office has pointed out that this will in no way involve the local fund raising appeal. A little if any of the funds from the General Mills project will find their way into the local area, the local officers stated. The funds will be used on a national basis and mainly in the Eastern and New York areas, they explained.

### Card Messages Are Written by Bishop

**KANSAS CITY, Mo. (UPI)** — A number of spiritual messages written by Bishop Fulton Sheen will appear on a boxed selection of Christmas cards this year.

A spokesman for Hallmark Cards said the distinguished Catholic prelate, author and lecturer had prepared the collection of miniature "essays" on the spiritual significance of Christmas and that his royalties were being donated to various charities including the Society for the Propagation of the Faith, the world-wide mission organization of which he is national director.

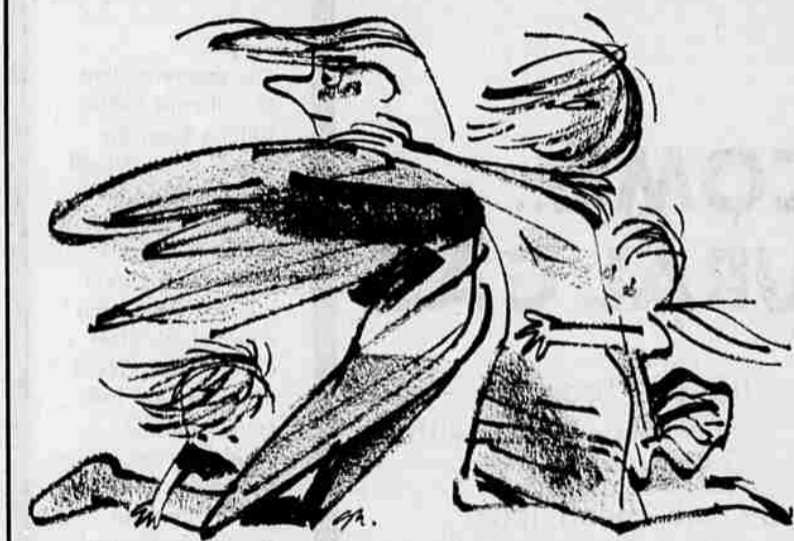
**HIGHWAYS COSTLY**  
**WASHINGTON (UPI)** — The American Municipal Association estimates that if New York, Chicago, Boston, Philadelphia and Cleveland were to lose their existing rapid transit networks, it would cost \$31 billion to build highways to replace them.

### Michigan Program Brings Foreign Students

**ANN ARBOR, Mich. (UPI)** — A record 345 young people from Europe, the Far East and Africa are now studying in Michigan high schools under the Youth for Understanding program of the Michigan Council of Churches and the Ann Arbor-Washtenaw and Berrien County Councils of Churches.

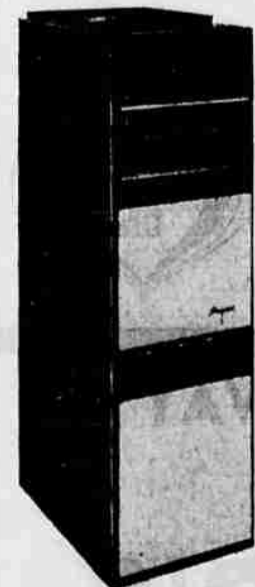
A new phase of the program took 65 Michigan young people to Mexico last summer where they were joined by 25 teenagers from Kansas. The program is increasingly "spilling over into other states," reports the Michigan Council.

**MEETING SET**  
**SALEM (UPI)** — The Legislative Interim Committee on Education has scheduled a meeting here Friday.



**draft-dodging** costs money! You really pay through the nose with faulty heating: sniffles, colds, discomfort. Through the purse, too... with fuel bills that skyrocket in winter months. What can you do?

Install a Payne forced air system for dependable, economical comfort.



A Payne exclusive that assures longer furnace life! Rust-proof! Burnout-proof! Wear-proof! The ceramic-like coating first developed to combat heat changes in jet engines and parts. Come in today! We have a Payne furnace to fit your home... and your budget!

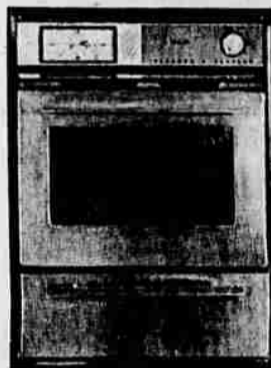
**THE PAYNE COMPANY**  
LA PUENTE, CALIFORNIA



# BEAVER

## YOUR GAS APPLIANCE & EQUIPMENT CENTER

**GAFFERS & SATTLER**



"The Ultimate in Gracious Living"

**OVEN**

Giant 20" oven and 4-hour signal timer clock, and pull-out chrome broiler. Engineering assures constant temperature control in every square inch of space. Never a "hot spot." Doors are removable, too, for easier cleaning.

**COOK-TOP**

Model 841-36" three giant center — simmer burners, thermal-eye, exclusive top burner timer. Controls are recessed — away from small inquisitive hands. Always cool to touch.

**BOTH OVEN and COOK-TOP \$199<sup>00</sup>**



**GAFFERS & SATTLER**

Vented & Recessed

### WALL FURNACES

These wall furnaces have an attractive baked enamel finish combined with smartly styled design to blend with the decor of any interior. These units are self contained and are simple to install.

Meets all F.H.A. and V.A. Requirements.

**35,000 BTU \$89<sup>00</sup>**

Ask Us About Guarantee!

**We Can Arrange for a COMPLETE INSTALLATION on Any Unit Purchased From Us EASY TERMS**

**HOURS:**  
8:30 to 5:30 Monday thru Saturday



### GAS HOT WATER HEATERS

THE FASTEST, MOST ECONOMICAL WAY TO HEAT WATER.

- Unexcelled resistance to rust and corrosion.
- Longest water heater life.
- Lowest cost per gallon to operate.
- Lowest cost per year to own.
- Safety pilot—100% type, automatically shuts off all gas in the event of extinction of pilot flame.

30 GALLON GLASS-LINED

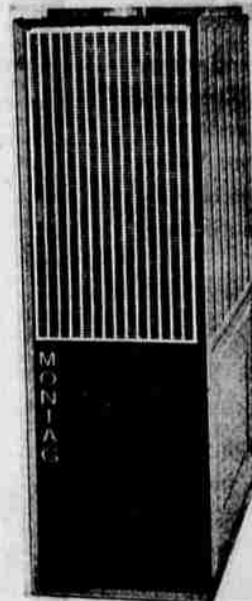
**\$54<sup>95</sup>**

No Trade-In Needed

### Complete Stock Of Gas Fittings & Pipe

1/2-Inch **Black Pipe** 12¢ Ft.  
1/2-Inch **Ells** 10¢ Each

**COMPLETE STOCK OF 3"-4" & 5" DOUBLE WALL PIPE & FITTINGS FOR ALL GAS VENTING!**



### Montag Gas-Fired Furnace

Maximum economy is accomplished through peak efficiency in the use of heat. Heavy gauge materials are used throughout, coordinated with specially designed burners, assuring you of continuous, quiet, inexpensive operation.

AVAILABLE IN ALL SIZES

● **SPECIAL** ●

HI-BOY 80,000 BTU With Thermostat

**\$129<sup>00</sup>**

**BEAVER ELECTRIC & PLUMBING SUPPLY COMPANY**

2740 No. Pacific Hwy. Phone 773-4549