



COLD DECK—This example of a cold deck is typical of many of the lumber companies in this area providing a winter's supply of logs to keep plants operating. This cold deck is at Medford Corporation.

Cold Deck Supplies Work During Winter

The huge stacks of logs, "cold decks" seen at several of the sawmills and plywood plants in the valley are signs of continued employment for the workers at those plants.

The logs are "cold-decked" during the summer when logging is going full scale, because when winter weather comes the

logging is curtailed or stopped. Although many of the logging operations continue during the winter on a limited basis, it would be impossible for them to guarantee enough production to supply the requirements of the sawmills and plywood plants.

The logs are kept damp by sprinkler systems to prevent their checking under the hot summer sun. After cooler weather arrives with some rain, the sprinklers will no longer be needed.

The logs will keep between 1,500 and 2,000 men employed through the winter in the immediate Medford area. This provides an income for several families which might otherwise be forced to move or receive assistance.

The logs also provide for several other persons serving the timber industry. Railroads, trucks, suppliers, grocers, clothing stores, gas stations, auto dealers and hundreds of others benefit from the year-round employee's regular paychecks.

Investments by Industry Noted

Hundreds of logging trucks may be seen on southern Oregon highways every day, but the average resident does not realize that each log truck and trailer represents an investment of \$35,000.

But logging trucks are only a small part of the equipment needed in the logging industry, industry officials reminded Oregonians this week during National Forest Products week.

Other machinery costs include lift truck, \$15,000; log stacker, \$65,000; logging tractor, \$45,000; log barker, \$45,000; lumber planer, \$65,000; log gang saw, \$4,000; and veneer lathe, \$125,000.

Other statistics listed by industry officials stated that the average truckload of logs is worth \$300 while the average boxcar load of lumber is worth \$2,500.

Average hourly wage in the industry is \$2.70 per hour with one day's payroll for a firm employing 150 persons \$6,000.

INCINERATOR

NEW YORK (UPI) — The Hoskinson smokeless, odorless incinerator, is now being made in America. Invented by Gordon Hoskinson of Missouri, the new type incinerator for refuse found its first market in England in 1969. Richmond Steel Co., of Richmond, Va., is producing it in the United States. It will be installed in buildings at the New York World's Fair and in several new skyscrapers.

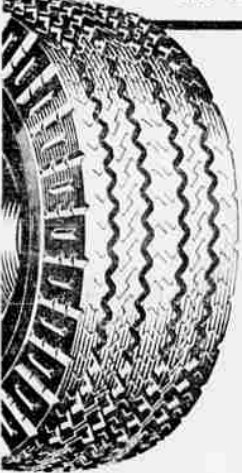
FACTORY CLEARANCE!
TRUCK TIRE SALE

All Brand New Factory-Fresh **TRUCKERS!** Check These Never-Before Prices. Compare Our Quality. Save Money. No Seconds, No Blemishes

FAMOUS GENERAL TRACTION SAFETY RIB
 FOR SMALL TRUCKS

* \$ **15.95**
 6:00 x 16 SIZE
 * plus tax and recappable tire

- Full 6 Ply Rayon Construction
- Full Tread Depth
- All Weather Traction Sipes



Nygen Cord Slightly More All Popular Sizes Available Tubeless Slightly Higher

FOR LARGER TRUCKS

■ Rugged 10-ply Rayon Construction plus tax and recappable tire

EXTRA! Save Even More! Buy 2 or 4

* \$ **44.44**
 8:25 x 20 SIZE

Your old tires make the down payment
TAKE MONTHS TO PAY

GENERAL TIRE
 SERVICE OF MEDFORD
 1112 Court Street Phone 773-8255

KOGAP MEANS KEEP OREGON GREEN AND PRODUCTIVE A LOCAL COMPANY . . .

OUR GOAL IS COMPLETE UTILIZATION OF THE FOREST CROP

Interested in community development.
 Managers of tree farm land.
 Manufacturers of . . .

- LUMBER
- VENEER
- PULP CHIPS
- MULTI-BARK

Contributors to local economy thru
 • Pay Rolls • Taxes • Community Service
 Creator of new money for local business

KOGAP LUMBER INDUSTRIES MEDFORD, OREGON