

# Participation by Student Subject of Doctoral Research

ASHLAND — Teachers are continually confronted with problems relating to how much direct participation by students is necessary to bring about an increase in learning.

Dr. Laurence E. Butler, director of the audio-visual center at Southern Oregon college, has conducted a doctoral research study in this area at Washington State University.

"Increased amounts of direct student participation should produce significant differences in student gains in knowledge and comprehension" was the major hypothesis tested.

Sixty-five teacher-training students from Southern Oregon college, 73 from Washington State university, and 45 from Lewis and Clark college, were used as subjects.

Three learning groups were pre-tested. Following the pre-test, one group was taught by the direct participation method, the second group by the film method, and the third group by the lecture method.

Precise, statistical procedures were used to equate the abilities of the group. Two types of learning behavior were tested for in this study.

The lecture method was the least direct method of instruction used.

# Eight Persons Injured in Week End Car Accidents

Eight persons were injured in a series of one-car accidents on Jackson county highways Saturday and Sunday, state police reported.

Ira Hershel Imhansen, 53, of 1490 Thomas rd., Medford, received minor injuries when his car hit a power pole as he was traveling south on Griffin Creek rd. Saturday night.

Robert Eugene Darlene, 24, and his passenger, Walshe May Walsh, 23, both of 265 Third st., Ashland, were treated at Rogue Valley hospital and released after they received minor injuries in an auto accident Sunday morning on Interstate 5 at the Phoenix interchange.

State police said the driver apparently went to sleep. The car went off the pavement, hit a guard rail and supporting pillar of the overhead crossing and turned over.

Extensive Damage resulted to a car driven by George Ben Reese Jr., 19, of Knowles rd., Medford, when the driver apparently fell asleep early Sunday morning. The car hit a highway sign north of Phoenix and some concrete blocks. The driver suffered cuts on his face and leg, police said.

A car driven by James Elizabeth Jocks, 38, of Klamath Falls, received extensive damage when it failed to make a turn on the Dead Indian rd., west of the summit, and went over a bank and turned over. The driver and passenger, Robert Marley Heath, 45, of Klamath Falls, were taken to Klamath Falls by private car. Extent of their injuries, if any, is not known, state police said.

Two persons were treated at Rogue Valley hospital Sunday afternoon and released after a car, operated by Lew Everett Whipple, 19, of route 1, box 365, Eagle Point, went off Hanley rd. west of Ross lane, and turned over.

According to Oregon state police, Whipple was cited for violation of the basic rule. His passenger, who was also treated at the hospital, was Everett Russell McGraw, 17, of Florence, Ore.

Whipple told officers that a bird flew across in front of his car and he swerved the car.

Extensive damage resulted to a car driven by George Ben Reese Jr., 19, of Knowles rd., Medford, when the driver apparently fell asleep early Sunday morning. The car hit a highway sign north of Phoenix and some concrete blocks. The driver suffered cuts on his face and leg, police said.

Whipple told officers that a bird flew across in front of his car and he swerved the car.

Whipple told officers that a bird flew across in front of his car and he swerved the car.

Whipple told officers that a bird flew across in front of his car and he swerved the car.

Whipple told officers that a bird flew across in front of his car and he swerved the car.

Whipple told officers that a bird flew across in front of his car and he swerved the car.



# Grange News

Lake Creek Grange Worthy Master Wayne Marshall presided at the October meeting of Lake Creek Grange. Claus Charley, agriculture committee, read a humorous letter from the Western Livestock Journal. It was concerning the "not raising of hogs"; the profit that can be derived from such a venture.

Elynn Charley, education committee, reported on an article on Fire Prevention week. A discussion followed on the best method to be used in case of a fire. Rural areas are at a disadvantage because of distance when a fire begins.

Secretary Elynn Charley read the third quarterly report of the Grange. At the present time membership is 62.

Members are reminded that election of officers of the Grange will be held at the November 9 meeting at 8:30 p.m. Mrs. Joe Arens and Mrs. Lester Marshall served the refreshments.

Greenhorn Grange YREKA — Lucy French became a member of the Greenhorn Grange at a meeting of the organization held recently with Master Lou Coles presiding.

Stella Severns was in charge of the program for the evening in the absence of the lecturer, Mrs. Joseph Lewellyn. The program included readings, stories and community singing.

Three Reported Dead In Norway Blaze NORWAY, Ore. (UPI)—Three persons, including two children, died today when fire swept through a two-story house at this community between Myrtle Point and Coquille in southwest Oregon.

Births FRANK — To Mr. and Mrs. Floyd, 246 Beatty st., Medford, Oct. 16, 1963, a boy, 8 1/2 pounds, at Rogue Valley hospital.

JENKINS — To Mr. and Mrs. David, 62 South Stage rd., Medford, Oct. 18, a boy, 10 1/2 pounds, at Rogue Valley hospital.

RYCE — To Mr. and Mrs. Max, U. S. Forest Service, Klamath River, Calif., Oct. 19, 1963, a girl, 5 3/4 pounds, at Rogue Valley hospital.

SIMCOE — To Mr. and Mrs. John, 2027 East McAndrews rd., Medford, Oct. 19, 1963, a boy, 7 1/2 pounds, at Rogue Valley hospital.

WOOD — To Mr. and Mrs. Wood, 8 North Orange st., Medford, Oct. 20, 1963, a boy, 7 pounds, at Rogue Valley hospital.

# Meeting Social Needs Of Youth Planned by Newly Organized Group

A "Quest for the Best in Social Activities" for teen-age youth of the Rogue valley is being undertaken through the Medford YMCA Social Activities Youth council which met recently to start planning or meeting youth social needs.

The purpose of this newly appointed and elected group is to arrange a partnership of youth and adults in planning for social affairs, to set high standards for the conduct and behavior patterns in social activities, to provide leadership opportunities and training for youth to better conduct their own activities, and to provide a clean wholesome atmosphere for young persons.

An outgrowth of a survey conducted last spring as a part of the study of the Medford YMCA showed that a large percentage of the high students look to the YMCA for an opportunity and an organizational pattern for social dancing, square dancing, mixed parties, and a chance to be a part of planning and operating this program.

Meeting Scheduled Herb Partridge, youth program chairman of the YMCA board, has invited to a meeting Monday, Nov. 11, members of the youth serving groups throughout the valley as well as high school youth representing the student body Hi-Y and Tri Hi-Y which are the YMCA's officially organized teen-age groups and members of the high school faculty.

Other interested parents or students are welcome to attend the meeting in the YMCA social hall.

Last year the Medford YMCA held square dancing for high school youth and a series of social dances for both senior and junior students. It was felt by those in charge of planning that a Social Activities Youth council with wider representation

Suspension Cut in Free Postage Use SALEM (UPI) — The State Civil Service Commission has reduced to one day the 15-day suspension given a one-armed combat veteran for using a postage free Department of Employment envelope to mail a veterans administration form.

Alvah G. Brown, who lost his right arm in combat, had appealed the 15-day suspension.

Brown had used the postage-free envelope to order repairs for his artificial arm. The Civil Service Commission declared the Department of Employment disciplinary action was "disproportionate to the infraction of its rules."

Handicraft Hits in our big, big, new 1964 Needlecraft Catalog, out now! See toys, fashions, crewelwork, heirlooms, gifts, bazaar hits—everything to crochet, knit, sew, weave, embroider, quilt, smock. Send 25c right now.

Grand Opening MUSIC ORGANS CONSOLES STEREO COMPONENTS 126 EAST MAIN ARCADE BLDG. Thursday • Friday • Saturday Come in and Register for FREE ORGAN! No purchase necessary

# Meeting of Pioneer Society Scheduled

The annual general meeting of the Southern Oregon Pioneers society tentatively has been set for Saturday, Nov. 2, and it is expected the luncheon event will be held in the Jacksonville Community center, according to Frank Ross, president.

Plans for the session were made Saturday when the planning committee of the society met in the Mark Antony hotel, Ashland. Notification cards are to be mailed in the near future, the officer stated.

At the planning meeting were Ross; Miss Mary Hanley, secretary; Frank Davis, Harry Barneburg, Elizabeth Sommer, Mrs. Fay Carver and Mrs. Helen Buckley, all past officers.

# Obituaries

DELLA HUGHES ASHLAND—Miss Della June Hughes, 37, of 23 Sherman st., Ashland, died Monday.

She was born May 15, 1926, in Bismarck, N.D., and is survived by her father, David J. Hughes, Ashland, and eight brothers and sisters.

Funeral arrangements will be announced by Litwiler Funeral home.

GEOFFREY TISCHHAUSER Graveside services for Geoffrey Don Tischhauser, infant son of Mr. and Mrs. Ernest Tischhauser, 492 Morton st., Ashland, were held today at Hillcrest Memorial park. The Rev. Paul Otte of the First Congregational church at Ashland officiated. Ashland Mortuary was in charge of arrangements.

Survivors, besides his parents, include two sisters, Debra and Lisa, both at home.

IDA L. BEELBY Funeral services for Ida L. Beelby, 91, of 435 West Gregory rd., Central Point, who died Sunday, will be held at 10 a.m. Wednesday at Perl Funeral home.

Dr. George Roseberry, pastor of First Methodist church, will officiate. Interment in Eastwood 100F cemetery will be private.

Mrs. Beelby was born March 21, 1872, in Lindsay, Ontario, Canada. She lived at Mt. Vernon, Wash., from 1900 to 1925. Since 1925, she had made her home in the Rogue valley.

She was a member of the First Methodist church. On Sept. 16, 1908, in Ontario, Canada, she was married to Wellington E. Beelby, who died June 4, 1959.

She is survived by two daughters, Mrs. Muriel L. Friend, Central Point, and Mrs. Myrtle Boshears, Medford; three grandchildren and five great grandchildren.

OLLIE PAULINE BURROWS The body of Ollie Pauline Burrows, 48, of Shady Cove, who died Saturday, has been returned to Whittier, Calif., for services and interment. Conger-Morris Funeral directors were in charge of arrangements.

Mrs. Burrows was born Nov. 21, 1914, in Oklahoma, and had lived in southern Oregon since June, 1962.

Survivors include her husband, Chester M. Burrows; four sons, three daughters and a sister.

ANNA HEIMDAL Mrs. Anna Heimdal, 521 Palm st., died yesterday in a local hospital. Funeral arrangements will be announced by Conger-Morris Funeral directors.

# 'David and Lisa' Is Moving Reiteration of Old Maxim

"David and Lisa," the highly praised, low budget film currently showing at the Craterian, is a moving reiteration of the old maxim, "love conquers all."

Compellingly acted by novices Keir Dullea and Janet Margolin in the title roles, the story portrays how two frighteningly maladjusted youngsters are awakened to the prospect of happy productive lives by a cautiously developed affection for each other.

The picture, which was produced on a shoestring several years ago by a young Philadelphia couple, is much more than the often superficial, too easily resolved case studies one sees on such television programs as "The Eleventh Hour" or the imitative "Breaking Point."

Transcends Own Plotline Indeed, it transcends its own plotline (the hallmark of a truly good piece of art) and reminds us that love is as basic a need to man as food and water.

Deprived of it in one way or another in youth, a malformation of some kind is nearly inevitable. It seems as vital to healthy growth as vitamins or fresh air.

David and Lisa, both bright born youngsters, were born to parents who saddled their children with their own frustrations and ambitions, who nurtured them amply with material benefits but failed to provide them with the thing they needed most — warm, natural parental love.

Enrolled In Institution As the film begins, both in their late teens have been enrolled (committed is too harsh a word) in a private mental institution directed by Psychiatrist Howard Da Silva. There, as the movie develops, they receive patient, understand in a care, free from outside pressure and ignorance.

But so severe were their personal problems that progress even in that secure environment is slow. David's deeply ingrained psychosis has led him to fear that if anyone touches him, he will die. Lisa has nearly completely withdrawn from the world. She refuses to accept that she is a girl. Her childlike sentences are carefully rhymed, and she won't talk with anyone who does not answer her in rhymed speech.

Long mistreatment has taught the youngsters to distrust and fear others, and their relationship is marked by hesitant reachings out and by violent rejections and outbursts.

Purposeful Look Once, angered by something David has done, Lisa, with a deadly purposeful look in her eyes, advances on him with her arm outstretched, her finger pointing at him as an instrument of death. He retreats and cowers.

David and Lisa, both bright born youngsters, were born to parents who saddled their children with their own frustrations and ambitions, who nurtured them amply with material benefits but failed to provide them with the thing they needed most — warm, natural parental love.

Enrolled In Institution As the film begins, both in their late teens have been enrolled (committed is too harsh a word) in a private mental institution directed by Psychiatrist Howard Da Silva. There, as the movie develops, they receive patient, understand in a care, free from outside pressure and ignorance.

But so severe were their personal problems that progress even in that secure environment is slow. David's deeply ingrained psychosis has led him to fear that if anyone touches him, he will die. Lisa has nearly completely withdrawn from the world. She refuses to accept that she is a girl. Her childlike sentences are carefully rhymed, and she won't talk with anyone who does not answer her in rhymed speech.

Long mistreatment has taught the youngsters to distrust and fear others, and their relationship is marked by hesitant reachings out and by violent rejections and outbursts.

Purposeful Look Once, angered by something David has done, Lisa, with a deadly purposeful look in her eyes, advances on him with her arm outstretched, her finger pointing at him as an instrument of death. He retreats and cowers.

David and Lisa, both bright born youngsters, were born to parents who saddled their children with their own frustrations and ambitions, who nurtured them amply with material benefits but failed to provide them with the thing they needed most — warm, natural parental love.

Enrolled In Institution As the film begins, both in their late teens have been enrolled (committed is too harsh a word) in a private mental institution directed by Psychiatrist Howard Da Silva. There, as the movie develops, they receive patient, understand in a care, free from outside pressure and ignorance.

But so severe were their personal problems that progress even in that secure environment is slow. David's deeply ingrained psychosis has led him to fear that if anyone touches him, he will die. Lisa has nearly completely withdrawn from the world. She refuses to accept that she is a girl. Her childlike sentences are carefully rhymed, and she won't talk with anyone who does not answer her in rhymed speech.

Long mistreatment has taught the youngsters to distrust and fear others, and their relationship is marked by hesitant reachings out and by violent rejections and outbursts.

Purposeful Look Once, angered by something David has done, Lisa, with a deadly purposeful look in her eyes, advances on him with her arm outstretched, her finger pointing at him as an instrument of death. He retreats and cowers.

David and Lisa, both bright born youngsters, were born to parents who saddled their children with their own frustrations and ambitions, who nurtured them amply with material benefits but failed to provide them with the thing they needed most — warm, natural parental love.

Enrolled In Institution As the film begins, both in their late teens have been enrolled (committed is too harsh a word) in a private mental institution directed by Psychiatrist Howard Da Silva. There, as the movie develops, they receive patient, understand in a care, free from outside pressure and ignorance.

But so severe were their personal problems that progress even in that secure environment is slow. David's deeply ingrained psychosis has led him to fear that if anyone touches him, he will die. Lisa has nearly completely withdrawn from the world. She refuses to accept that she is a girl. Her childlike sentences are carefully rhymed, and she won't talk with anyone who does not answer her in rhymed speech.

HOLLY PHONE 773-1902 COMING WEDNESDAY ON OUR STAGE ORGAN RECITAL Sponsored by MUSIC CENTER Featuring Mr. Leon F. Drews At the Organ Tickets Now on Sale Music Center & Craterian ON OUR SCREEN CHEVALIER MacDONALD MERRY WIDOW

CRATERIAN PHONE 772-5424 LAST NITE AN UNUSUAL LOVE STORY! DAVID & LISA KEIR DULLEA JANET MARGOLIN HOWARD DA SILVA "DAVID & LISA" PAUL HELLER FRANK PERRY 55 DAYS AT PEKING SUPER TECHNICOLOR

# Locals

Dinner Set — Members of Griffin Creek Grange will meet for a potluck dinner at 6:30 p.m. Thursday, Oct. 24, in the Grange hall.

Rummage Sale — The Little Garden Club of Medford will hold a rummage sale in the Felt building, 108 North Ivy st., Medford, Friday, Oct. 25, from 9 a.m. to 4 p.m.

Permit Issued — The Medford building department issued a permit today to the Medical Center building, Sixth st. and Central ave., to remodel a suite of offices at an approximate cost of \$1,000. A permit was issued Monday to the Equitable Savings and Loan association to make additions to its office space in the Medford Shopping Center at an estimated cost of \$17,000. This association was incorrectly referred to yesterday as the Equitable Life insurance company.

Permit Issued — The Medford building department issued a permit today to the Medical Center building, Sixth st. and Central ave., to remodel a suite of offices at an approximate cost of \$1,000. A permit was issued Monday to the Equitable Savings and Loan association to make additions to its office space in the Medford Shopping Center at an estimated cost of \$17,000. This association was incorrectly referred to yesterday as the Equitable Life insurance company.

Permit Issued — The Medford building department issued a permit today to the Medical Center building, Sixth st. and Central ave., to remodel a suite of offices at an approximate cost of \$1,000. A permit was issued Monday to the Equitable Savings and Loan association to make additions to its office space in the Medford Shopping Center at an estimated cost of \$17,000. This association was incorrectly referred to yesterday as the Equitable Life insurance company.

Permit Issued — The Medford building department issued a permit today to the Medical Center building, Sixth st. and Central ave., to remodel a suite of offices at an approximate cost of \$1,000. A permit was issued Monday to the Equitable Savings and Loan association to make additions to its office space in the Medford Shopping Center at an estimated cost of \$17,000. This association was incorrectly referred to yesterday as the Equitable Life insurance company.

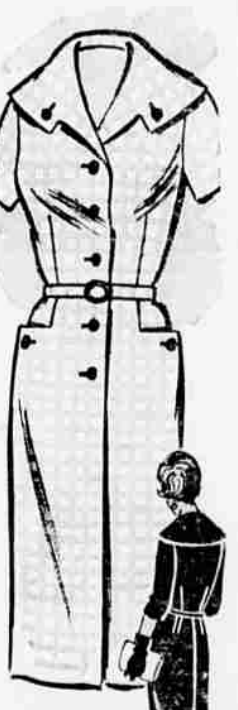
Permit Issued — The Medford building department issued a permit today to the Medical Center building, Sixth st. and Central ave., to remodel a suite of offices at an approximate cost of \$1,000. A permit was issued Monday to the Equitable Savings and Loan association to make additions to its office space in the Medford Shopping Center at an estimated cost of \$17,000. This association was incorrectly referred to yesterday as the Equitable Life insurance company.

Permit Issued — The Medford building department issued a permit today to the Medical Center building, Sixth st. and Central ave., to remodel a suite of offices at an approximate cost of \$1,000. A permit was issued Monday to the Equitable Savings and Loan association to make additions to its office space in the Medford Shopping Center at an estimated cost of \$17,000. This association was incorrectly referred to yesterday as the Equitable Life insurance company.

Permit Issued — The Medford building department issued a permit today to the Medical Center building, Sixth st. and Central ave., to remodel a suite of offices at an approximate cost of \$1,000. A permit was issued Monday to the Equitable Savings and Loan association to make additions to its office space in the Medford Shopping Center at an estimated cost of \$17,000. This association was incorrectly referred to yesterday as the Equitable Life insurance company.

Permit Issued — The Medford building department issued a permit today to the Medical Center building, Sixth st. and Central ave., to remodel a suite of offices at an approximate cost of \$1,000. A permit was issued Monday to the Equitable Savings and Loan association to make additions to its office space in the Medford Shopping Center at an estimated cost of \$17,000. This association was incorrectly referred to yesterday as the Equitable Life insurance company.

# Winter Casual



9149 SIZES 12 1/2 - 22 1/2 by Marianne Martin

Step into this smart, cap-collar casual, then step out for everything from gift shopping to gab-fests with the girls. For cotton, rayon

Printed Pattern 9149: Half Sizes 12 1/2, 14 1/2, 16 1/2, 18 1/2, 20 1/2, 22 1/2. Size 16 1/2 requires 3 3/4 yards 39-inch fabric.

FIFTY CENTS in coins for this pattern—add 15 cents for each pattern for first-class mailing and special handling. Send to Marianne Martin, Medford Mail Tribune, Pattern Dept., 212 West 18th St., New York 11, N.Y. Print plainly NAME, ADDRESS with SIZE and STYLE NUMBER.

CLIP COUPON FOR 50c FREE PATTERN in big, new Fall-Winter Pattern Catalog, just out! 354 design ideas. Send 50c for Catalog.

UTUHA Theatre ON SCREEN AT 7 & 10:30 p.m. Shirley Maclaine IN Alfred Hitchcock's "THE TROUBLE WITH HARRY" TECHNICAL JOHN EDWARD GIVERNY JOHN FORSTHE SHIRLEY MACLAINE 2ND ADVENTURE 9 P.M. The Pirates of Blood River

DON'T MISS THE JUNIOR SERVICE LEAGUE'S BENEFIT Flea Market RUMMAGE AND FOOD SALE - BAZAAR ARMORY OCT. 25-26-27 FOR COMMUNITY BENEFIT AND TO HELP FINANCE THE KINDERGARTEN FOR HARD-OF-HEARING CHILDREN Lots of Entertainment-Carnival 30 Booths-Kiddies Land-Two Restaurants - Everyone Invited! Courtesy Medford Mail Tribune