

PAY NO MONEY DOWN ON ANY CREDIT PURCHASE AT WARDS

MAN-TAILORED SHIRTS



REG. 3.98
COTTON
DRESSES

2⁹⁹

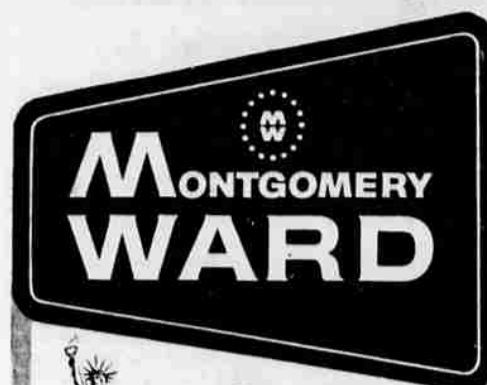
Elbow-patch shirtdress... most popular in the class! Wards details them with contrasting patches, belts and collars... in rich prints, plaids, plains, Perky Bermuda and shirt collars, even cardigan necks. These take a dip in the washer, scarcely need ironing. 7 to 14.



**VERY SPECIAL!
COMBED COTTON
IN SIX COLORS**

2⁹⁸

Terrific buy at Wards! Long sleeved shirts in fine combed cotton, Sanforized® for beautiful washability. Various collar styles, some with metal clasp. Blue, pink, white, red, beige, brown. Sizes 32 to 38.



**3 LAST
DAYS
TO SAVE!**

**WARD
WEEK
SALE**

Lowest prices of the season!
Hurry in and save!



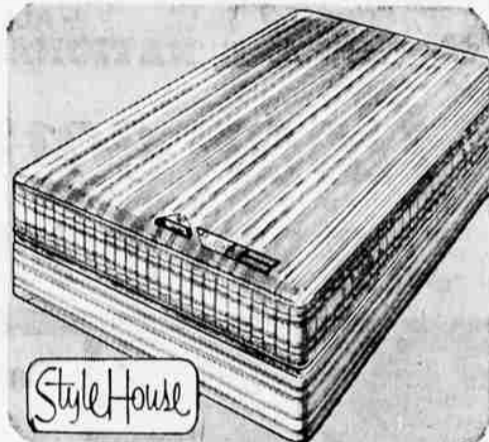
4-IN-1 AIRLINE

STEREO, FM/AM PLUS FM STEREO

Built-in Multiplex to receive FM stereo programs! Automatic changer, 4 balanced speakers, fine FM/AM radio reception. Mahogany finish. Other styles, add \$10.

\$188

NO MONEY DOWN



SAVE \$15 ON SETS!

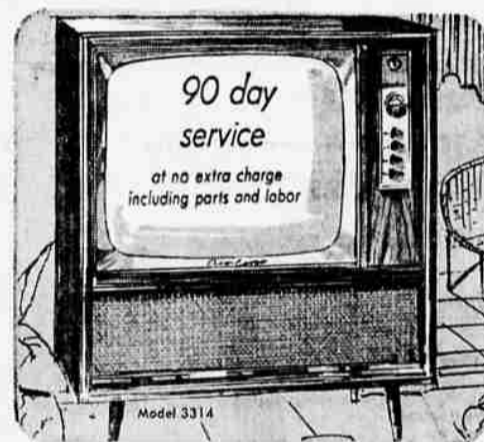
STYLE HOUSE STANDARD-FIRM QUALITY

312-coil innerspring in the standard firmness most people prefer, with matching box springs. Smooth gold-stripe cotton ticking.

64⁸⁸

REG. 79.90
TWIN OR FULL
NO MONEY DOWN

MATTRESS OR BOX SPRING... each 35.88



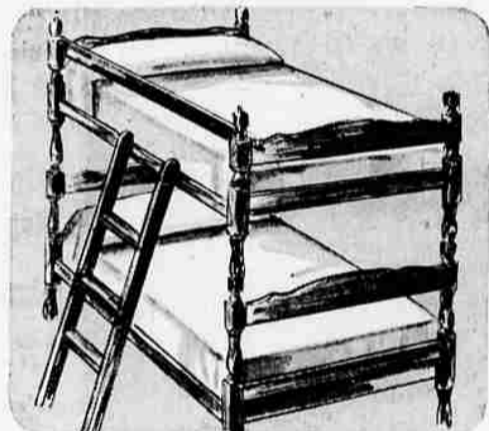
23" CONSOLE TV

CLEAR AIRLINE PICTURE AND SOUND

See the picture bright and clear! Enjoy full, rich sound as it is projected into the room from the inclined speaker baffle. Mahogany or walnut-finish cabinets.

\$183

NO MONEY DOWN



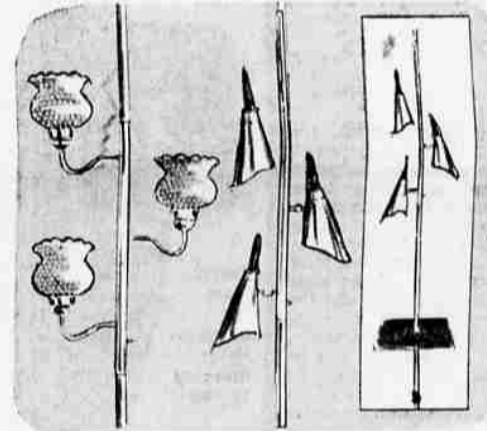
REGULARLY 89.95

8-PC. MAPLE-FINISHED BUNK SET

Space-saving bunk outfit includes mattresses, springs, ladder, guard rail. Can also be set up as 39" twin beds. Maple-finished solid hardwood. About 54" high.

69⁸⁸

complete
NO MONEY DOWN



3.07 SAVING!

POLE LAMPS WITH 3-WAY SWITCHES

Milk glass globes for Early American decors; enameled pole; brass-finish center. For modern look, tapered shades with walnut trim; 15 1/2" plastic-top table.

12⁸⁸

Each
REG. 15.95



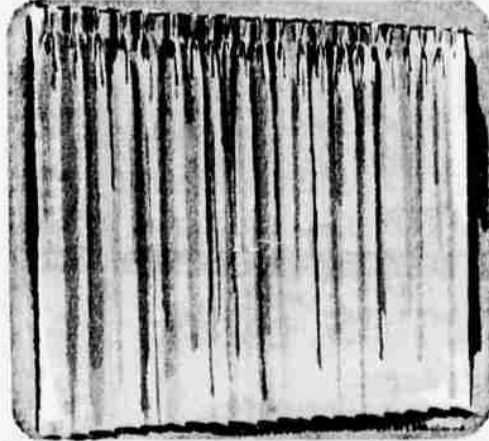
DIRT CAN'T HIDE!

VIBRA-BEAT DEEP-CLEANS 3 WAYS

Beats, sweeps, cleans with powerful suction. Vibra-beaters loosen deep dirt, brushes whisk up surface litter, suction leaves rug clean clear through!

\$44

NO MONEY DOWN



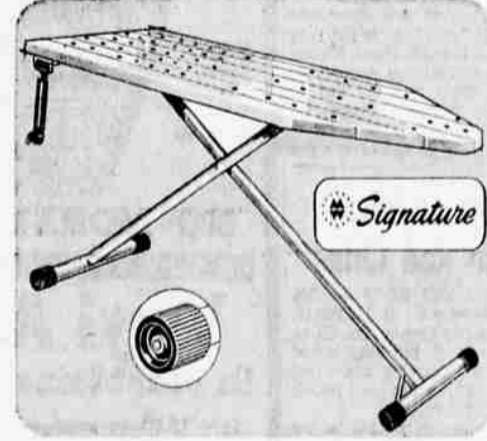
99¢ SAVING!

EASY-CARE FIBERGLAS® DRAPERIES

The elegance of simplicity—smoothly woven Fiberglas® draperies that drip-dry, never need ironing! Won't shrink, stretch, sag, burn or rot. 306 sizes, colors in all!

4⁹⁹

48"x84" PR.
REG. 5.98



18% OFF TABLE!

PERFORATED TO LET STEAM ESCAPE

Full-size ironing table has 1 1/4-in. tubular offset legs, attached outlet, easy-roll wheels. Height adjusts from 24 to 36-in. Enamel finish, 54x15-in. top. Folds flat.

6⁴⁹

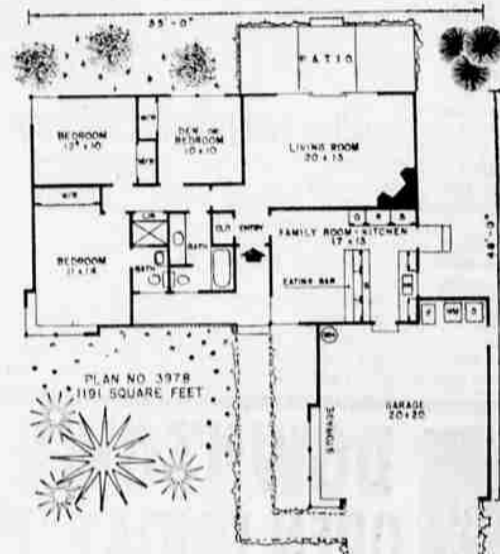
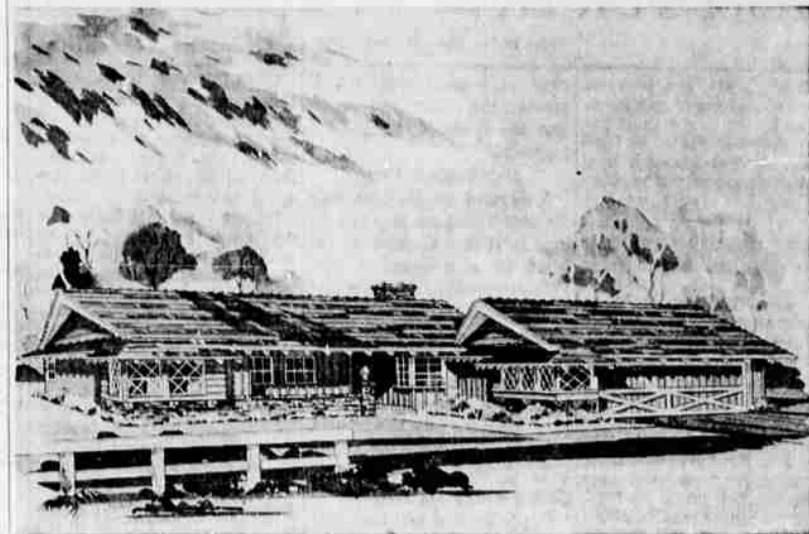
REG. 7.98

5-OZ. INNERWEAR SUIT
Dacron "88" polyester fiber insulated. Nylon inner, outer shell.
11⁹⁹
SPORTING GOODS, BASEMENT

SAVE OVER 20%
4-Cubic Foot
WHEELBARROW
7⁸⁸
REG. 9.95

\$2 DOWN **HOLDS ANY BIKE UNTIL DEC. 14th**

This Week's Plan for Home Builders



By HIAWATHA ESTES
Here is an economical rectangular plan that opens up to pleasant landscaping at both the front and rear of the house.

Large corner windows in the family room offer a wide view toward the front of the lot while sliding glass doors provide a view to the rear of the lot and make the living room appear to be almost a part of the patio and vice versa.

The attractive brick porch leading to the entry is completely roofed and sheltered from the elements. The brick veneer on the front bedroom wall continues as a brick wall and then forms a brick pillar on the top of which has been located a handsome light fixture.

No Cross-Room Travel

From the entry, there is no cross-room travel necessary in getting around the house, thus guaranteeing privacy for each area. Such thoughtful details as this and others outlined herein, tend to make a small house seem large and very pleasant in which to live.

When you desire a wide-open atmosphere around the activity center, it is well to only use cabinets to separate the family room and kitchen as we have done here. A long eating bar has been made an integral part of these cabinets.

A door leads from the kitchen to the rear yard while another opens direct to the garage. This latter door offers prompt access to the laundry facilities located in an offset at the rear of the

garage. It also saves many steps each year in carrying purchases from the car to the house and eliminates the necessity of walking through inclement weather from the garage to the house.

Pleasant Living Room
The pleasant living room is exceptionally spacious for a home of less than 1,200 square feet. It can be expanded to accommodate entertaining on a large scale by merely opening the sliding doors leading to the patio.

The two baths have been placed back-to-back to economize in the plumbing installation. The three-quarter bath opens directly to the master bedroom.

A guest closet is next to the entry while a roomy four feet wide linen is in the hall.

Grants Totaling \$111,242 Received For Ocean Research

CORVALLIS — New grants totaling \$111,242 have been received by the Oregon State University Department of Oceanography for studies on radioactive intake of ocean organisms, classification and life cycle of ocean bottom organisms, and parasitic worms of deep water fish.

Largest is a \$37,130 one-year grant from the Atomic Energy commission. Dr. Andrew G. Carey Jr., will head the work on continued classification of organisms living near the ocean bottom. Included in the research will be radioanalysis of organisms to determine any radioactivity level within the organisms.

Filter-feeding organisms such as mussels and clams can concentrate radioactive material in their bodies. OSU's ocean scientists want to know if many other small sediment-feeding organisms have the same ability.

Sources of Radioactivity
Oceanographers also want to find how far in the ocean off the Columbia river artificial radioisotopes are carried from the Hanford reactor plant at Richland, Wash. Another source of radioactive material filling into the ocean is from nuclear bomb tests.

Investigations for the AEC will be carried out to a distance of 165 miles. Oregon's coastal waters are excellent for intensive study because the continental slope is narrow and steep, it was noted.

OSU's oceanographers can make short but frequent cruises over a wide range of depths and environments and study a great variety of marine animal and plant life. Since most of the deep water marine life is almost unknown off the Pacific Northwest coast, oceanographers expect to add much new data to the basic information of the sea.

Carey also will carry out an other study of marine life to determine the relationships of the ocean bottom organisms and their environment. This will be sponsored by the National Science Foundation during the next three years with a \$36,644 grant. More Marine Life
Oceanographers now believe

that there is more marine animal life within the deeper parts of the ocean than had been thought to exist. Working from the university's oceanographic vessel, Acona, scientists will explore ocean depths from over a mile to almost two miles down.

Another ocean research project now under way with a \$13,178 National Institutes of Health grant is directed by Dr. James McCauley. Basic research will be made on the parasitic worms of fish that live in deep water. Most of the data gathered before have been on fish within relatively shallow water — less than one-quarter of a mile down. McCauley will concentrate on studying fish in depths down to two miles.

The NIH study will attempt to learn more about the parasites of fish. OSU's scientists want to know why these fish have parasitic worms, affect the parasites have on the fish, and the life cycle of the parasites.

A fourth research project now under way by Dr. Herbert C. Curl Jr., is sponsored by the Atomic Energy commission with a \$24,290 one-year grant.

The AEC grant will allow researchers to probe into the food cycle of certain marine organisms to learn more about what they feed on, how they convert this food into energy and how the energy is stored. OSU oceanographers also want to find what happens to radioactive fallout as it drops or is carried into the ocean and as assimilated by the organisms.

Interest on County Money Is Received

Jackson County Treasurer Karl Janouch has received \$18,107.86 in interest on money invested during the past quarter. The money will be divided with the county's general fund receiving \$14,237.33. Other taxing bodies will receive the remainder, Janouch explained. The schools will get \$3,721.60; White City Sanitary district \$92.31 and Gold Hill Irrigation district \$56.62.

Complete working drawings for this plan can be purchased at a cost of \$7.50 for the first set and \$3 for each additional set when ordered at the same time. This plan will be available at these prices until Feb. 6. Please allow two to three weeks for delivery. The following home plan books are also available: Hallmark Homes, \$1; Award Homes, \$1; Town and Country Homes, \$1; Homes for Living, \$1; Homes of Distinction, \$1; Ranch and Modern Homes, \$2. All books, a \$7 value, only \$5. Send all orders for either plans or books to Hiawatha Estes, post office box 404-T, Northridge, Calif.

***BANG!**

***THAT'S GERALD McBOING-BOING'S WAY OF SAYING**

GET GOING FOR CLEAN-TASTING Teem

JUST ON THE LIGHT SIDE OF LEMON AND LIME

A PRODUCT OF PEPSI-COLA COMPANY

© 1963, PEPSI-COLA COMPANY

Bottled by Pepsi-Cola Co. of Medford under appointment from Pepsi-Cola Company, New York, N. Y.

WARD WEEK SALE

WARD WEEK SALE

WARD WEEK SALE