

Timber Industry Recovering from Columbus Storm

OLYMPIA (UPI)—As the first anniversary of the violent Columbia Day windstorm approaches, the Northwest timber industry apparently is winning its fight to come back from the worst natural disaster it ever experienced.

About 3.5 billion board feet of timber felled by the storm in Washington and Oregon has been salvaged by loggers racing against fire, insects and time.

The job is far from completed. The storm toppled an estimated 17 billion board feet in the two states. Some of it was a total loss and will be removed from the woods as the effort to salvage the valuable trees goes on.

On Oct. 12, 1962, winds from the trailing edge of Typhoon Freida hit Washington, Oregon and Northern California, killing 19 persons and doing \$10 million worth of damage. Gusts as high as 160 miles an hour were recorded.

Hardest hit was the multi-million dollar timber industry. W. D. Hagenstein, executive vice president of the Industrial Forestry Association of Portland, said the storm "laid down more timber than any other recorded forestry catastrophe in the Pacific Northwest."

He said the 17 billion board feet of downed timber was "a year and a half's supply for the giant Washington-Oregon forest industry."

Foresters, looking sadly at the damage a year ago, predicted the side effects of the storm would be worse than the blow itself.

For instance, they said the felled timber would dry in the summer sun and would be ready to go up in flames as soon as the first spark was dropped.

But, possibly because of a cool summer and stringent fire protection precautions, damage from forest fires was lower this summer than usual.

Another potential trouble cited in the wake of the storm was the threat of insects such as the Douglas fir bark beetle. That is still a major danger, officials of the State Department of Natural Resources claim, although damage from bugs has been light so far.

Depress Prices
It was also feared that the large volumes of timber dumped on the market would depress prices.

However, Washington State Land Commissioner Bert Cole said so far state-owned timber has been sold for prices well in excess of its appraised value.

The state has sold 272.1 million board feet of blowdown timber so far for a total price of \$9.4 million. The appraised value of the trees was \$7.5 million, Cole said.

The storm felled 422.6 million board feet of state-owned timber. However, in order to salvage the blowdown, an additional 314 million board feet of standing trees must be logged at the same time. Thus the state must sell 736.6 million board feet before the salvage operations are completed.

The state will place an additional \$2.6 million board feet appraised at \$1.8 million on the auction block in late October and November.

Car Thievery Big Business, Claim

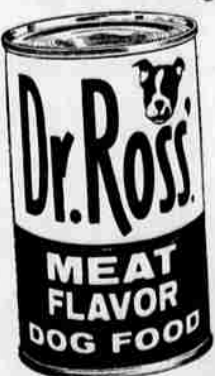
NEW YORK (UPI) — Keep the family car in the family by locking it, suggests the National Automobile Theft Bureau.

The countrywide theft prevention and car recovery agency is maintained by 350 auto insurance companies. It is estimated that cars are stolen at the rate of \$1 million worth a day. Careless motorists who don't lock their cars make stealing easy, the bureau said.

NOW YOU KNOW

By United Press International
Nearly 98 per cent of the World War II veterans able to work are employed, according to the Veterans Administration.

more meat



more flavors

USDA CHOICE CHUCK BEEF ROASTS



lb.

49^c

USDA Choice Round Bone

Roast..... 59^c lb

Randy's Veal Cube

Steaks..... 10⁰ FOR \$1⁰⁰

USDA Choice Boneless

Cross Ribs..... 79^c lb

PORK SAUSAGE

Pure Country Style 1-lb.—45c
2 lbs. 79^c

CHEESE FESTIVAL

Cheese Slices Kraft's Amer., Pim., Swiss—8 oz. 3/1.00

Snack Links Kraft's Smokelle, Cheese & Bacon, Nippy—6 oz. 3/1.00

KRAFT'S 5-OZ. GLASS
Cheese Spread Pim., Amer., Cheese & Bacon, Olive Pim. 3/87c

Baby Gouda's Kraft—8 oz. 55c



Tillamook

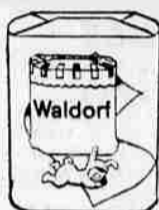
Mild Cheddar Cheese

2-lb. Loaf \$1³⁹

CHEESE MAKES THE MEAL

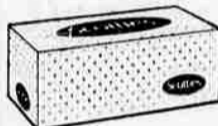
PUREX Liquid Bleach

Gal. 59^c



Waldorf

Tiolet Tissue 4-Roll Pack 3 FOR \$1⁰⁰



Scotties

Facial Tissue Box 400's 4 FOR \$1⁰⁰

Velveeta

Kraft Cheese Food

2-lb. Loaf

79^c

TUNA

BREAST-O-CHUNK

6 1/2's Tins \$1⁰⁰

Borden's Evaporated Milk

Tall Tin

8 FOR \$1⁰⁰

Crackers

Sunshine Krispy

2-lb. Box 49^c

Nalley's MAYONNAISE 16 oz. 59c

Nalley's CHILI w/BEANS 30 oz. Tin 59c

Nalley's BEEF STEW 30 oz. Tin 69c

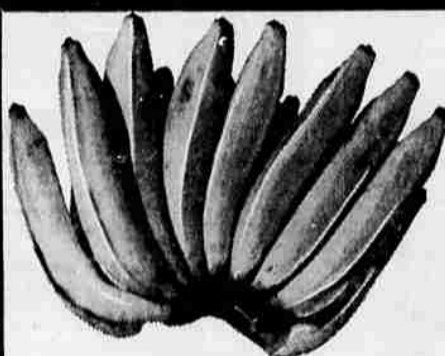
Hershey's Chocolate Syrup 16 oz. Tin 2/45c

Tang, Instant Breakfast Drink 14 oz. Jar 69c

Del Monte Pineapple Grapefruit Drink 46 oz. Tin 3/1.00

Wax Paper
Cut Rite
125' Roll 29^c

Paper Towels
Scott
3 roll 200's \$1⁰⁰



Golden Ripe lb.

Bananas

10^c

Crescent Black Pepper 4 oz. Tin 39c

Crescent Cinnamon 4 oz. Tin 49c

Crescent Chili Powder 4 oz. Tin 47c

Salad Oil Wesson Oil Lgo. Size 39c

Armstrong "One Step" Floor Wax 32 oz. \$1.09

Vets Dog Food No. 1 Tin 10/79c

Celery Fresh Crisp Stalk

Pink Grapefruit Florida Ea.

Yams Fancy Lb.

10^c

VAN WEY'S THRIFT

126 Pine Street • Central Point
Hours: 8:00 to 9:00 Week Days—9:00 to 7:00 Sundays
NEW PAVED PARKING LOT
Finest Produce • Guaranteed Meats
Lawn-Boy Dealer

Prices Effective Thru Sunday, Oct. 13

Independently Owned & Operated



Tip-Top MARKETS

GRANDVIEW MARKET

2330 Crater Lake Ave. • Medford
Hours: 9:00 A.M. to 9:00 P.M. Monday Through Sunday
Warm Room Lockers • Lots of Parking
Guaranteed Meats • Fast Film Service
Post Office Hrs., 9-6 Mon.-Sat.

Limit Rights Reserved