



Mrs. Carol McGee has taken over her duties as executive secretary of the Rogue Camp Fire Girls council, with headquarters at Room 319 Leverette building. Mrs. McGee, who came to Medford from Oakland, Calif., is a registered social worker and has been on the staff of the California State Welfare department, the American Red Cross and the Camp Fire Girls in California.

Camp Fire Council Names New Executive Director

Mrs. Carol McGee, until recently of Oakland, Calif., has been appointed executive director of the Rogue council, Camp Fire Girls, it was announced last week by Mrs. Richard Westfield, Ashland, council president. The Camp Fire Girl offices are located at 319 Leverette building.

The new director replaces Mrs. T. H. Gerey, Medford, who served in that position for seven years, until she recently resigned. Mrs. McGee is a graduate of the University of California, Berkeley, and has been a member of American Association of University Women since 1939.

A registered social worker, she has worked with the California State Welfare department, worked with the juvenile division of San Francisco Po-

Episcopalians Will Entertain Methodistists

Woman's Society of Christian Service of First Methodist church will be guests of the Episcopal Churchwomen of St. Mark's Episcopal church when they meet Tuesday, October 15. The meeting will begin with a morning prayer service held in the church at 10:30 a.m. and a short business meeting is planned following the service. Luncheon will be served in the Guild hall at 12 noon.

Mrs. Alfred S. Tyson, wife of the rector of St. George's Episcopal church, Roseburg will be the guest speaker.

Reservations for the luncheon may be made by telephone with the church office, dial 773-3111, before noon, Saturday, October 12.

An easy way to pack ties for a trip is between two pieces of cardboard with a rubber band around the cardboard to hold the ties in place.

Post-Concert Reception Will Honor Musicians

The Portland Symphony orchestra, which will give a concert in Medford Wednesday, October 16, at Hedrick Junior High school, will be honored at a reception following the program.

The Peter Britt Music and Arts association is sponsoring the party, to be held at Rogue Valley Country club. Mrs. John Lusk is chairman in charge of arrangement, and reservations are to be made with her at 772-9535.

The 70-piece Portland musical group is making a tour of the state this month, and upon returning to Portland, will open the season there with a concert October 21.

Conductor Jacques Singer has been in Mexico to lead that nation's Orquesta Sinfonica Nacional in four concerts, and returned to Portland Monday. Intensive rehearsals will continue until the orchestra takes to the road October 12.

Maestro Singer has programmed for the state-wide tour Handel's "Water Music Suite," Benjamin Britten's "Variations and Fugue on a Theme of Purcell" and Tchaikovsky's "Sym-

Calendar

Calendar notices and news for the society section of The Mail Tribune must be submitted in writing and deadline for the Sunday edition is 10 a.m. Friday. Deadline for the weekly calendar is 9 a.m. of the day of publication and for week day news is 5 p.m. the day before publication.

Wednesday
6:30 p.m.—Women's auxiliary to Jackson County Medical society, Rogue Valley Country club.

7:30 p.m.—De Molay Mother club, Masonic hall.

7:30 p.m.—Order of De Molay, Masonic hall chapter room.

8 p.m.—Toastmistress club, Girls Community club.

8 to 10 p.m.—Round dance lessons, Country Square, Talent.

8 p.m.—Xi Mu chapter, Beta Sigma Phi, home of Mrs. Raymond Headley, route 3, box 183E, Medford.

9 p.m.—Wayne King orchestra, Medford armory.

Thursday
10:30 a.m.—Howard Extension unit, Mrs. Delbert Ross, 2425 Table Rock rd.

11 a.m.—Women's fellowship, Medford Congregational church, Mrs. Duane Richardson, 749 West 14th st.

12 noon—Red Cross Board of Directors, chapter house, 60 Hawthorne ave.

12:30 p.m.—Adarel Social club, Jacksonville Masonic temple.

12:30 p.m.—Lutheran Women's Missionary League, St. Peter's Lutheran church.

Reunion Held In Eagle Point
EAGLE POINT—A family reunion was held recently at the home of Mrs. Mattie Brown. Attending were Mr. and Mrs. Carl Taylor, Portland, Mr. and Mrs. H. C. Rippey, Baker, Ore., and Mr. and Mrs. William H. Pllum, Santa Barbara, Calif. Mrs. Rippey, Mrs. Pllum, and Mrs. Brown are sisters and Mr. Taylor is a brother.

Meet Tonight
Members of Bethel 14, International Order of Job's Daughters, plan to meet this evening in the Medford Masonic temple, for the purpose of assisting in making favors for the Masonic and Eastern Star home in Forest Grove.

Woman Leaves For Georgia

SHADY COVE—Mrs. Eldon Elder, Shady Cove, has joined her husband who is attending an Army radio-teletype school at Fort Gordon, Ga., near Augusta. The Rev. and Mrs. Clayton Fields and daughter, Paula, also of Shady Cove, accompanied Mrs. Elder on her trip back to Fort Gordon.

When panbroiling a meat cut, no additional fat or water is added. The pan is not covered and the drippings are poured off as they accumulate. In pan-frying, a small amount of fat is added. Water is not added nor is the pan covered.

HUGE 3.1 CU. FT. FREEZER

NO DEFROST HERE!

GE COMBINATION FEATURES BIG FREEZER AT NEW LOW PRICE

Regular Price **\$339.95**

SPECIAL PRICE \$268.88 (Less Hapco Trade)

Model TB 304X

A two-door, 13.2 cubic-foot refrigerator-freezer combination that features a bigger-than-average freezer.

A separate door opens to a zero-degree freezer that holds 108 pounds of frozen foods with a door shelf big enough to hold half-gallon ice cream cartons!

The roomy fresh food compartment never needs defrosting. You'll find all the most-wanted General Electric quality features, too, such as Straight-Line design with no coils on the back; sliding out shelf; butter compartment; two full-width door shelves; slide-vegetable drawers and, depending on G-E performance! See it today... it's the biggest refrigerator value we've ever offered!

WASHER-DRYER PAIR!

'64 Models

'64 Models

MODEL WA650Y

WASHER

BUY THESE AS A PAIR OR SEPARATES

\$244.95

MODEL DA620Y

DRYER

ALL BRAND NEW '64 G-E FEATURES ON BOTH!

\$189.95

19 Inch Portable G.E. T.V.

WITH FREE STAND As Shown!

A BARGAIN AT ONLY **\$149.95**

Model M 200

COLOR TV

SEE FOR YOURSELF!

For your enjoyment we will remain OPEN until 9 p.m. on MONDAY and WEDNESDAY Nights. See "The Virginian" and "Monday Night at the Movies" in Full Color.

TONIGHT: "THE VIRGINIAN" in COLOR

Instant Color Controls—only two—provide quick, simplified tuning of color hue. You can receive Black & White programs, too, on these two-in-one instruments... sharp, clear and bright. Choice of fine furniture styles and lustrous finishes. Every set is carefully assembled by skilled craftsmen, rigidly inspected by experienced technicians... in the tradition of General Electric quality leadership. 21" diagonal tube measurement—260 sq. in. picture.

PRICED AT ONLY **\$464.95** (Less HAPCO Trade)



TERMS

HAPCO

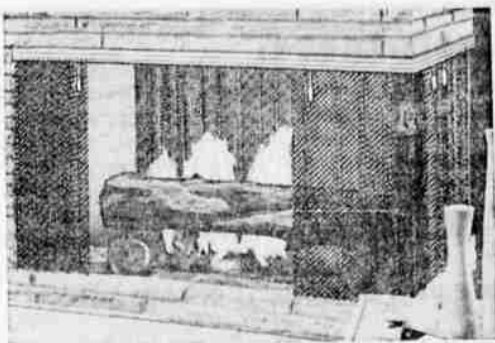
HOME APPLANCE COMPANY
115 EAST MAIN--MEDFORD

There is nothing "Just as Good" as General Electric or as good as your dependable dealer.

WE SCREEN UNUSUAL FIREPLACES

Guaranteed 48-Hour Delivery!

(On Most Models)



We take pride in custom fitting modern screens to your individual fireplaces... no matter what size or shape... corner, canopy, arch top, half round, etc.! Select from several styles and finishes. We repair and rescreen old or damaged screens, also. And remember, on most models we can guarantee 48-hour delivery!

BIG PINES LUMBER COMPANY

Ph. 773-5333

6th at Fir—FREE Parking

Visit Our FIREPLACE CORNER for the largest selection of fireplaces and equipment in Southern Oregon.