

Group Organizes To Help Improve South Talent Area

The South Talent Improvement group will hold its second preliminary organizational meeting at 7:30 p.m. Friday, Oct. 18, at the home of Mr. and Mrs. Wyder Hooke on the Old Pacific highway, Talent.

Plans will be made for holding a public meeting of all residents in the South Talent area, election of officers and formation of a permanent organization.

Purpose of the organization is to work with residents of the city of Talent for community betterment. Any citizen of the area may join.

At a Friday night meeting at the Hooke home, it was decided to encourage all area residents to attend the regular meeting of the Jackson county planning commission in the courthouse auditorium at 8 p.m. Wednesday, Oct. 9 to discuss the South Talent interim zoning.

One group is circulating petitions calling for an election on the zoning before the ordinance expires Nov. 1, 1964. The new group which started organizing Friday night is in favor of the interim zone with possible changes.

Temporary officers elected Friday night were Hooke, chairman, Mrs. A. W. Ottinger, vice-chairman, Lois Yockel, secretary treasurer, and Don Grimes, publicity chairman. A standing committee includes Mr. and Mrs. Richard Klimek, Mr. and Mrs. Henry Lucier, Robert Lucier, Charles Cory and Mrs. Hooke.

At Friday night's meeting the group was uncertain whether the interim zoning ordinance could be voted out or be made permanent before the expiration date. They were concerned also over location of trailers within the zone and the interpretation of a commercial zone.

Fall Term Adult Classes Still Open

The fall term evening courses in Medford's adult education program will be open for registration through this week, Lindsay M. Vinsel, supervisor of adult education, announced yesterday.

Classes open in business education include beginning and review shorthand, office machines, bookkeeping and manual or electric typing.

Included in the homemaking classes are knitting, cake decorating, bishop clothing and tailoring.

The general education courses still open for enrollment are speed reading, public speaking, conversational French and Spanish, English review, arithmetic review, algebra, slide rule, blueprint reading and mechanical drawing.

In the hobby and craft field are woodworking, photography, tempera painting and oil painting classes.

Information concerning the time, date and room number may be obtained from the adult education office at Medford high school, Vinsel said, asking people wishing information to telephone 773-7229.



*THAT'S GERALD McBOING-BOING'S WAY OF SAYING

PUT OUT THAT BIG THIRST WITH CLEAN-TASTING

Teem

JUST ON THE LIGHT SIDE OF LEMON AND LIME

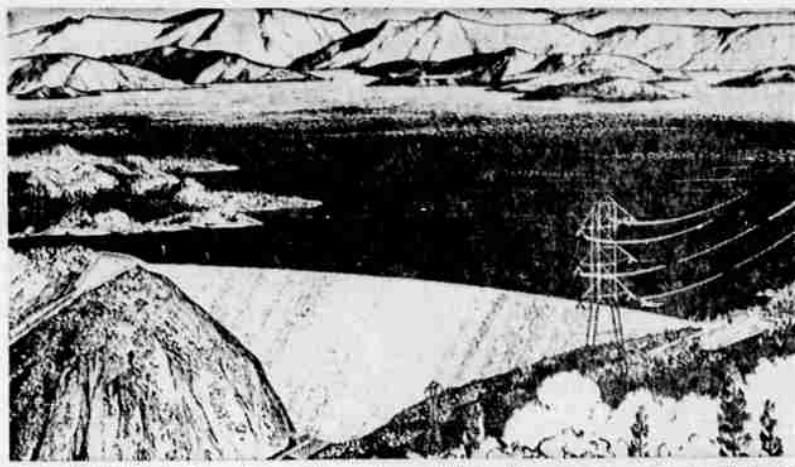
A PRODUCT OF PEPSI-COLA COMPANY

Bottled by Pepsi-Cola Co. of Medford Under Appointment from Pepsi-Cola Company, New York, N.Y.

MEDFORD, OREGON, SUNDAY, OCTOBER 6, 1963

Jackson County Polling Places

- 1 Ashland—Lincoln School Gym, Beach St.
- 2 Ashland—Armory, Oak and B Street, Oak St.
- 3 Ashland—Briscoe School Hall, North Main St.
- 4 Ashland—Armory, Oak and B Street, Oak St.
- 5 Ashland—Briscoe School Gym, North Main St.
- 6 Ashland—High School Gym, 1087 Iowa St.
- 7 Ashland—High School Gym, 1087 Iowa St.
- 8 Ashland—Briscoe School Gym, North Main St.
- 9 Ashland—Lincoln School Gym, Beach St.
- 10 Ashland—Briscoe School Gym, Manzanita St.
- 11 Ashland—Armory, Oak and B Sts., Oak St.
- 12 Ashland—Walker School Gym, South Door
- 12A Ashland—Walker School Gym, South Door
- 12B Ashland—Walker School Gym, South Door
- 13 Ashland—Lincoln School Gym, Beach St.
- 14 Valley View—Briscoe School Gym, Manzanita St.
- 15 Bellview Northeast—Bellview School Gym, East Door
- 16 Bellview—Bellview School Gym, East Door
- 17 Lincoln—Pinehurst School, Lincoln, Oregon
- 18 Bellview South—Bellview School Gym, East Door
- 19 Lake Creek—Lake Creek Community Hall, across from store
- 20 Butte Falls—Butte Falls High School Gym, Butte Falls, Ore.
- 21 Eagle Point No.—Eagle Point High School Gym, E. entrance
- 22 Eagle Point So.—Eagle Point High School Gym, E. entrance
- 23 Flourence Rock—Prospect High School Gym, Prospect, Ore.
- 24 Trail—Elk Trail School Gym, Trail, Ore., Southeast Entrance
- 25 Shady Cove—Shady Cove School Gym, West Entrance
- 26 Reese Creek—Reese Creek Gospel Church
- 27 Eagle Point—Eagle Point School Gym, East Entrance
- 28 Medford—Howard School Gym, 2801 Merriman, Southeast dr.
- 28A Medford—Howard School Gym, 2801 Merriman, Southeast dr.
- 28B Medford—Howard School Gym, 2801 Merriman, Southeast dr.
- 29 Medford—Howard School Gym, 2801 Merriman, Southeast dr.
- 29A Medford—Wilson School Auditorium, Corona and Grand
- 29B Medford—Wilson School Auditorium, Corona and Grand
- 29X Medford—Wilson School Auditorium, Corona and Grand
- 30 Medford—Wilson School Auditorium, Corona and Grand
- 31 Hillcrest—Lone Pine School Gym, 3158 Lone Pine Rd., SW
- 31A Spring—Lone Pine School Gym, 3158 Lone Pine Rd., Southwest
- 32 Medford—McLoughlin Junior High Girls Gym, 320 W 2nd
- 33 Medford—Court House, Old Bldg., Oakdale Ent. Auditorium.
- 34 Medford—McLoughlin Junior High Girls Gym, 320 W. 2nd
- 35 Medford—Jefferson School Gym, Holmes Ave., Front Door
- 36 Medford—Court House Auditorium, Old Bldg., Oakdale Ent.
- 37 Medford—Lincoln School Gym, 608 North Bartlett St.
- 38 Medford—Lincoln School Gym, 608 North Bartlett St.
- 39 Medford—High School Girls Gym, Melrose St. South Door
- 40 Medford—Court House, Old Bldg., Oakdale Ent. to Auditorium
- 41 Medford—Court House, Old Bldg., Oakdale Ent. to Auditorium
- 41A Medford—High School Girls Gym, Melrose St., South Door
- 42 Medford—Hawthorne Convalescent Home Chapel, 625 Stevens
- 43 Medford—Hawthorne Convalescent Home Chapel, 625 Stevens
- 44 Medford—Roosevelt School Gym, 112 Lindley St.
- 44A Medford—Roosevelt School Gym, 112 Lindley St.
- 44B Medford—Hoover School Auditorium, Siskiyou and Modoc
- 45 Medford—Roosevelt School Gym, 112 Lindley St.
- 45A Medford—Hawthorne Convalescent Home Chapel, 625 Stevens
- 46 Medford—Hedrick Junior High Gym, 1501 East Jackson
- 46A Medford—Hedrick Junior High Gym, 1501 East Jackson
- 46B Medford—Hedrick Junior High Gym, 1501 East Jackson
- 47 Medford—Washington School Gym, 610 South Peach St.
- 47A Medford—Washington School Gym, 610 South Peach St.
- 47B Medford—Washington School Gym, 610 South Peach St.
- 48 Medford—Washington School Gym, 610 South Peach St.
- 49 Medford—McLoughlin Jr. High Schl Girls Gym, 320 W 2nd St.
- 50 Medford—McLoughlin Jr. High Schl Girls Gym, 320 W 2nd St.
- 51 Medford—Jackson School Gym, 630 West Jackson, SE Dr.
- 52 Medford—Jackson School Gym, 630 West Jackson, SE Dr.
- 53 Medford—McLoughlin Jr. High Girls Gym, 320 West 2nd St.
- 54 Medford—Courthouse Hallway, Rear Entrance to Main Bldg.
- 55 Medford—High School Girls Gym, Melrose St., South Door
- 55A Medford—High School Girls Gym, Melrose St., South Door
- 56 Medford—Hoover School Auditorium, Siskiyou and Modoc
- 56A Medford—Hedrick Junior High Gym, 1501 East Jackson
- 56B Medford—Hoover School Auditorium, Siskiyou & Modoc
- 56X Medford—Rogue Valley Manor Auditorium
- 56Y Medford—Hoover School Auditorium, Siskiyou & Modoc
- 57 Kings Highway—Jefferson School Gym, Holmes Av., Frnt Dr.
- 57A Phoenix NE Rural—Armory Class Room, Fairgrounds
- 57B Bear Creek—Jefferson Schl. Gym., Holmes Av., Front Door
- 58 Chestnut St.—West Main Church of Christ, Chestnut & Main
- 58A Bellinger Ln—Oak Grove School Gym, 2838 Jacksonville Hwy.
- 58B Orchard Home—Jefferson School Gym, Holmes Av., Front Dr.
- 59 Phoenix E. Rural—Phoenix Hi School Gym., Phoenix, Ore.
- 60 Phoenix NW Rural—Phoenix High School Gym., Phoenix, Ore.
- 61 Phoenix SW Rural—Phoenix Grade Schl. Gym., Phoenix, O.
- 62 Talent SW Rural—Talent School Gym, Talent, Oregon
- 63 Talent E. Rural—Talent School Gym, Talent, Oregon
- 64 Griffin Creek—Griffin Creek School Gym
- 64A Griffin Creek West—Griffin Creek School Gym
- 65 West Side—West Side Schl. Gym., Ross Lane & Stage Rd.
- 66 Jacksonville Rural—Comm. Hall, 4th & C Sts., Jacksonville
- 67 Ross Lane—Jackson Schl. Gym., 630 W. Jackson, SE Door
- 67A Oak Grove—Oak Grove School Gym., 2838 Jacksonville Hwy.
- 68 Lozier Lane—Oak Grove Schl. Gym., 2838 Jacksonville Hwy.
- 68A Perrydale—Oak Grove Schl. Gym, 2838 Jacksonville Hwy.
- 69 Old Military—Junior Hi Schl. Gym, Bush & 4th St., Cent. Pt.
- 70 Central Pt. NE—Crater Hi School Gym, Central Point
- 70A Central Pt. NW—Crater Hi School Gym, Central Point
- 71 Central Pt. SE Rural—Junior Hi School Gym, Central Point
- 71A Central Pt. SE—Junior Hi School Gym, Central Point
- 71B Central Pt. SW—Junior Hi School Gym, Central Point
- 72 Willow Springs—Crater High School Gym, Central Point
- 73 White City Domiciliary—P.O. Bldg., No. 202, White City
- 73A Central Pt. No. Rural—Jewitt School Corridor, Central Point
- 73B Agate Desert—Jewitt Schl. Corridor, 10th & Manzanita, C. P.
- 74 Sams Valley—Sams Valley School Gym
- 75 Wimer—Wimer Grange Hall
- 76 Rogue River No. Rural—Rogue River High School Gym
- 77 Rogue River So. Rural—Rogue River High School Gym
- 78 Gold Hill North Rural—Hanby School Gym
- 79 Gold Hill So. Rural—Patrick Schl. Teachers Rm., Gold Hill
- 80 Footh Creek—Community Hall, Footh Creek
- 81 Applegate—Applegate School Gym, Applegate, Oregon
- 82 Ruch—Ruch School Gym, Ruch, Oregon
- 83 Copper-Sterling—Ruch School Gym, Ruch, Oregon
- 84 South Pioneer—Phoenix School Gym, Phoenix, Oregon
- 85 Talent—Talent School Gym, Talent, Oregon
- 86 Phoenix—Phoenix Grade School Gym, Phoenix, Oregon
- 87 Jacksonville So.—Comm. Hall, Jacksonville, 4th and C Sts.
- 87A Jacksonville No.—Comm. Hall, Jacksonville, 4th and C Sts.
- 88 Bybee—Crater High School Gym, Central Point
- 89 Gold Hill—City Hall Library, Gold Hill
- 90 Rogue River—Rogue River High School Gym, Rogue River



THE OROVILLE DAM — This artist's sketch is filled with water after 1968. It will be the highest embankment dam in the world, towering 735 feet above the streambed. (UPI)

Father, Son Fined On Game Violation

A father and son from Prospect pleaded guilty Friday in Jackson county district court to violation of game laws.

The father, Peter James Frison, 56, pleaded guilty to illegal possession of an animal (deer) and was fined \$100. He paid \$50 and was directed to pay the remainder in 30 days.

Paul Anthony Frison, 19, Prospect, was placed on probation for 12 months after pleading guilty to exceeding the bag limit by killing three deer. A condition of his probation was that he attend school or enter the service, but not hunt.

Postal Material Distributed to New Residents

The Medford post office along with post offices in cities from east to west in cooperation with Welcome Wagon International, Inc., is distributing postal information materials to new or relocated patrons. Dorothy Sanborn, Welcome Wagon hostess, and Al Bradford, acting postmaster, reported last week.

A letter written by Postmaster Bradford opens this way: "Welcome to your new location. I hope you will feel perfectly at home at your new address. The post office will do everything possible to have your mail delivered promptly and take care of any other postal need that might arise."

Through the courtesy of the Welcome Wagon Hostess, we are supplying a special kit of postal information for your assistance and use. Included in the kit are change of address order forms for post-

Too Many Bookkeepers . . . or Not Enough?

Either way, we can help you by doing your daily work as well as your monthly statements and annual closures. Consolidation of all work will prove to be more effective, and, in most cases, less expensive.

LET US WORK OUT A SCHEDULE TAILORED TO YOUR INDIVIDUAL NEEDS . . . WE "SPECIALIZE" IN YOUR ACCOUNTING PROBLEMS.

SPECIALIZED BOOKKEEPING

Room 203—216 East Main St.

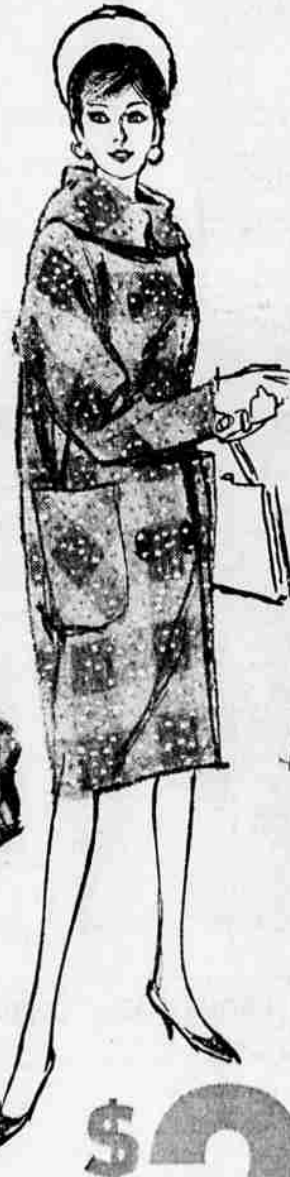
Medford, Oregon

Phone 772-9159

PENNEY'S — ALWAYS FIRST QUALITY ANNUAL FALL COAT EVENT



TOMORROW . . .
Shop From 9:30 A.M.
Until 9 P.M.



\$39

\$29

FABULOUS FUR TRIMMED WOOLS

Polished 'n ribbed rolls or zibeline, tweeds, plaids, boucles! With . . . natural mink*, bleached wolf*, dyed squirrel* 'n dyed fox*. Even some fantasy fakes that fool the eye!

CLASSIC SELF TRIMS IN DRESSY WOOLS

Polished zibelinos, monotone tweeds, diagonal tweeds! Even some fur trims of natural raccoon* and dyed fox* on random satin twills, wools.

CHARGE IT . . . CASH IN ON SAVINGS . . . DON'T MISS IT!

It's a shopping adventure you won't want to miss. You'll see controlled flares with and without trims of fur; back belts, pockets with flaps. Close-cuts that cling princess-fashion, curve-in front, stand straight'n slim. Wide swings that rely on a wealth of fabric for splash, take back interest or flow from face-framing fur collars. Tomorrow's the beginning and your best bet's to be here when the doors swing open.

\$19

WELL-TAILORED CLASSICS IN FINE QUALITY WOOLS AND WOOL BLENDS!

\$24

WOOL TWEEDS AND WOOL FLEECES! LAMINATED ACRYLIC BOUCLES WITH DYED MOUTON COLLARS.

\$59

OUR PRIZED GROUP OF WOOLS WITH NATURAL MINK* NORWEGIAN BLUE FOX!

\$29

HIDE JACKET COATS IN BROWN AND WHITE, BLACK AND WHITE.

888

BALMACANS, CHESTER-FIELDS ALL WEATHER COATS IN MUTED PLAIDS AND SOLID TONES.

Geo. Grabow

1365 Kings Hwy., Medford
Phone 772-8560

- Ultrasonic Cleaning
- Electronic Timing

WE BUY OLD GOLD!

