

**\$2 CASH**

For Full Thrifty Green Stamp Books Here

**MARK'S Groceteria**  
THE PLACE TO GO FOR THE BRANDS YOU KNOW  
Sixth and Grape  
Limit Rights Reserved No Sales to Dealers  
LOTS OF FREE PARKING

**We Will Gladly Cash Your Paycheck**

**GROCETERIA STEAK SALE!** USDA CHOICE

Steaks positively guaranteed to satisfy or your money cheerfully refunded. Treat your family to a juicy tender steak dinner this weekend. Our low prices are kind to your budget.

**All Tender Aged**



USDA CHOICE

**T-BONE**

**98¢**

Pound

- USDA CHOICE BONELESS **TOP SIRLOIN** lb. \$1.39
- FRESH **GROUND BEEF** lb. 39c
- USDA CHOICE **CLUB STEAK** lb. 98c
- RANDY'S **VEAL CUTLETS** 10 2-oz. Cutlets in pkg. 98c
- Taste Demonstration Given Friday & Saturday
- USDA Choice Boneless **PORTERHOUSE** lb. \$1.09

USDA CHOICE

**RIB STEAK**

**89¢**

Pound

**GROCETERIA PARTY FOODS**

Get All Your Party Needs at the Groceteria—a Complete Line of Fancy Foods, Snacks, Nuts and Mixes

- |                            |                      |                         |
|----------------------------|----------------------|-------------------------|
| TINY DILL TOMATOES         | COCKTAIL MEAT BALLS  | COCKTAIL FRANKS         |
| HOLLAND HOUSE COCKTAIL MIX | PLASTIC PARTY STICKS | ROSES LIME JUICE        |
| MACADAMIA NUTS             | IMPORTED ANTI-PASTO  | NBC SNACK CRACKERS      |
| IMPORTED COCKTAIL ONIONS   | SMOKED OYSTERS       | SODA KING SELTZER BOMBS |

**Potatoes U.S. No. 2**

**10 lb. bag 29¢**

**Tokay Grapes** FLAME Peak o' Goodness **2 L B S 29¢**

**Velvet Yams** New Crop **10¢ lb ONLY**

**Oranges** Delicious Eating **5 lb. bag 59¢**

**Apples** Local **4 L B S 39¢**

**Senate Committee Being Briefed on Tax-Cutting Plan**

By VINCENT J. BURKE United Press International WASHINGTON (UPI)—The Senate Finance Committee was called into closed sessions today to be tutored by staff experts on the complexities of a 310-page tax-cutting bill.

The measure, which passed the House on a 271-155 roll call eight days ago, would provide relief for virtually every federal taxpayer, starting Jan. 1. The relief would total \$11 billion, with one-third delayed to Jan. 1, 1965.

Despite administration hopes for speedy passage, it is doubtful that Congress will complete action this year. However, backers insist that if the bill is not enacted until next year, the first stage of the two-stage tax cut would be made retroactive to Jan. 1, 1964.

The committee's briefing sessions are expected to extend until next week. Then, Treasury Secretary Douglas Dillon will be called as the lead-off witness for public hearings which will run for many weeks. Seventy-five witnesses already have asked to testify.

**Russia Believed Accepting Plan For Inspection**

WASHINGTON (UPI)—Russia appeared today to be reluctantly accepting an unprecedented U. S. plan to inspect Soviet scientific bases in the Antarctic to check for military activities.

Officials said Soviet diplomats have told the State Department that Moscow has no objection to Americans "visiting" the bases but prefers that it not be called "inspection."

The Russians added that there was no need to inspect the bases. And they left open the question whether they will ask to inspect similar U.S. bases.

The United States announced two weeks ago that it would inspect the Soviet installations during the coming Antarctic summer—November to March—under terms of a treaty signed by 12 countries, including the U. S. and Russia, in 1959.

**Treaty Gives Right**

The treaty banned nuclear weapons testing and military operations from the Antarctic continent and gave each country the right to inspect any other signatory's bases. Thus far this provision has not been used.

U. S. spokesmen said the bases of some other nations also would be inspected. They said there was no evidence of a treaty violation but that this country wanted to exercise the treaty right to establish a precedent for its use.

Since Russia has always been sensitive about any form of inspection—though it signed the treaty—U. S. officials were not sure how the Kremlin would react. It was the inspection issue which limited the recent nuclear test ban treaty, to under-ground tests and which has stalled disarmament negotiations for years.

**Cooperation Required**

The U. S. Antarctic inspections will require considerable Soviet cooperation such as providing shelter for the inspectors and landing permission for their planes. Talks on these details have been going on recently. Indications are the Soviets are not imposing obstructions.

Russia has four permanent scientific bases in the Antarctic ranging in size from about 100 men to 8 or 12 men at a base called "Vostok" near the South Pole. It also has two summer bases.

Until last March the U. S. had one American stationed as a liaison man at one of the permanent bases, Mirny, on the coast.

**British Columbia Shipments Gain**

PORTLAND (UPI)—The Pacific Lumber Inspection Bureau said today British Columbia continued to gain during August in waterborne shipments as compared to last year.

The Bureau said that until the end of August, British Columbia shipped almost 1.5 billion board feet of lumber by water, a gain of 17 per cent from last year. August shipments totaled 176 million board feet, an increase of 21 per cent.

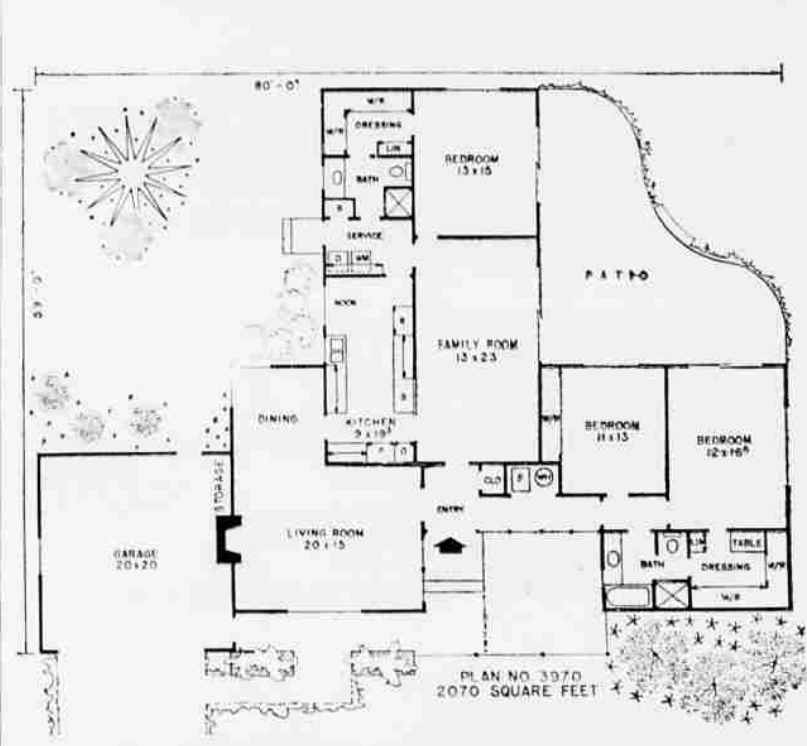
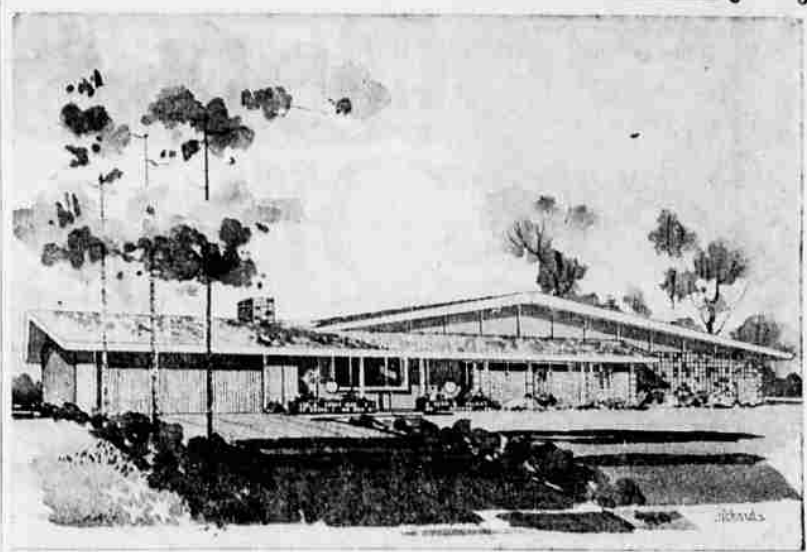
United States' shipments totaled 914 million feet by water, a gain of four per cent, during the same period. August shipments totaled 129 million board feet, compared with 115 million a year ago.

**Two Accidents Are Reported To Police**

Two non-injury vehicle accidents were investigated by Medford police Wednesday. No citations were issued, officers said.

Vehicles operated by Anthony John Bottano, 60, of 1710 East Main st., and William Melvin Maloy, 62, Prospect, collided at 4:50 p.m. at West Main and Ivy sts.

Max Herman Wimmer, 56, of 1115 West Second st., and Joseph Marshall Roop, 21, of 494 West Second st., were operators of vehicles which collided about 7:17 p.m. at Oakdale ave. and Eighth st., according to reports.



**This Week's Plan for Home Builders**

By HIAWATHA ESTES

This is indeed an ingenious exterior and floor plan.

The exterior is a combination of strong, robust materials which contribute their share of interest to this dramatic design. The rock covered roof of the garage continues along the front wall of the house to provide a covered passageway from both the garage and front walk to the entry.

This roof also decreases the apparent height of the front wall of the house and creates a much more handsome front elevation. Two low concrete block planters flank the walk leading to the entry. Low hanging light spheres add to the overall design and also highlight the planting area, as well as light the approach to the house.

**Screen Block Wall**

A screen block wall complements the front elevation, forms an inside planting area next to the front porch and creates privacy for the abundant glass area next to the entry. Concrete block veneer enhances the styling at the front of the bath-dressing wing.

Double doors open to the well lighted entry. From the entry, there is direct access to the living and family rooms as well as the bedroom wing. Note the exceptionally small hall space in this plan.

All of the rooms are more than adequate in size. The huge living room with its adjoining dining ell is ideal for formal entertaining. When entertaining informally, add to this the large family room plus the patio and there is hardly a limit to the number of invitations you can extend.

The large family room with its easy access to the outdoors and partial opening to the kitchen.

About 90 per cent of the U. S. sulphur and one-half of the world supply comes from Louisiana and Texas.

en is a desirable location for most family activities.

The latest labor saving and convenient devices, including a built-in dishwasher, refrigerator, oven and range, together with a floor to ceiling pantry, are all arranged for maximum efficiency in preparing and cleaning up after meals.

The outstanding feature of this home is that the two oversized bedrooms have private dressing rooms plus access to a bath, and through sliding glass doors, to the privacy of the rear patio. Either of these rooms could be used as the master bedroom.

Complete working drawings for this plan can be purchased at a cost of \$7.50 for the first set and \$3 for each additional set when ordered at the same time. This plan will be available at these prices until Jan. 29. Please allow two to three weeks for delivery. The following home plan books are also available: Hallmark Homes, \$1; Award Homes, \$1; Town and Country Homes, \$1; Homes for Living, \$1; Homes of Distinction, \$1; Ranch and Modern Homes, \$2. All books—\$7 value—only \$3. Send all orders for either plans or books to Hiawatha Estes, post office box 404-T, Northridge, Calif.

**CORKY'S 88¢ STORE**

**IS MOVING & EXPANDING!**

We are moving to LARGER QUARTERS—we don't want to move our tremendously large stock—we want YOU to come and take it away at BIG SAVINGS. We save on moving charges—you save plenty on every item!

**STOP! SHOP!**  
122 EAST MAIN ST.

**STARTING FRIDAY—AT CORKY'S...**

**NOTHING IN THE STORE OVER 66¢**

**DURING THIS SALE**

Save on Houseware, Clothing, Gifts, Jewelry, Toys, Hardware, etc. at CORKY'S!