

'Iridescent Suit' Is Setting Trend in Fall

This fall's most newsworthy development in the trend-setting department is the emergence of the "iridescent suit," in which sparkling gold, olive, blue and green threads are woven together in the fabric so that suit actually changes color as its owner moves about.

Introduced by several major manufacturers, the "iridescent suit" seems a logical projection of the now well-entrenched lighter, brighter look in men's suits, and in some circles is seen as the harbinger of a new and significant trend in this realm.

CUTS COSTS

NEW YORK (UPI) — More than half the glazed ceramic wall tile now being installed in the United States is set in place with a "dry-set" mortar invented in 1957, according to the Tile Council of America which perfected and patented the mortar and licenses it for manufacture.

The mortar, because it is lighter, thinner and easier to use, has helped reduce tile installation costs by as much as 25 per cent, the Tile Council said.



TUNIC DRESS — Tunic dress for little girls comes in layers, too. Sleeveless top removes to show a white-topped dress with pleated skirt.

Russians Hope Red Ants Will Save Forests

ROME (UPI)— Soviet experts recently came to Italy to buy unusual merchandise — ants.

Exploiting the work of the purchased Italian ants, assuming that they will acclimatize, survive and multiply, Soviet Russia expects to save millions of rubles just like Italy saved millions of Lira.

The ants belong to a red species labeled by entomologists as "formica rufa." Their specialty is to re-establish, quickly, harmlessly and inexpensively the biological balance broken in some forests by leaf-eating insects.

The formica rufa is not a new discovery, but its "industrial" employ in Italy as an effective and costless insecticide dates back to only a few years ago when experts of the ministry of agriculture transplanted several colonies of them from the woods of the Lombard Alps to areas of the Tuscan Apennines. Here large forests were being threatened with extinction by leaf-eating worms.

Clean Forests

The terrain was such in those areas that use of chemical insecticides, apart from the cost, was almost impossible. In a few years the formica rufa which, according to entomologists, is one of the most advanced insect societies known, multiplied and cleaned up the forests from the infesting worms and bugs.

The result of the experiment was so successful that the ministry of agriculture extended it to other areas. Sardinia's forests were likewise infested and so were the big pine forests on the slopes of Sicily's volcano, Mount Etna.

In Sardinia, where millions of ants were shipped two years ago, the worm and bug reclamation program is well under way. The ants are winning. Strangely enough, the formica rufa did not acclimatize on Mount Etna. But local entomologists have not lost hope and are busy trying to develop varieties more adaptable to the Sicilian habitat.

Fabrics Are Integral Part of Fall Fashion

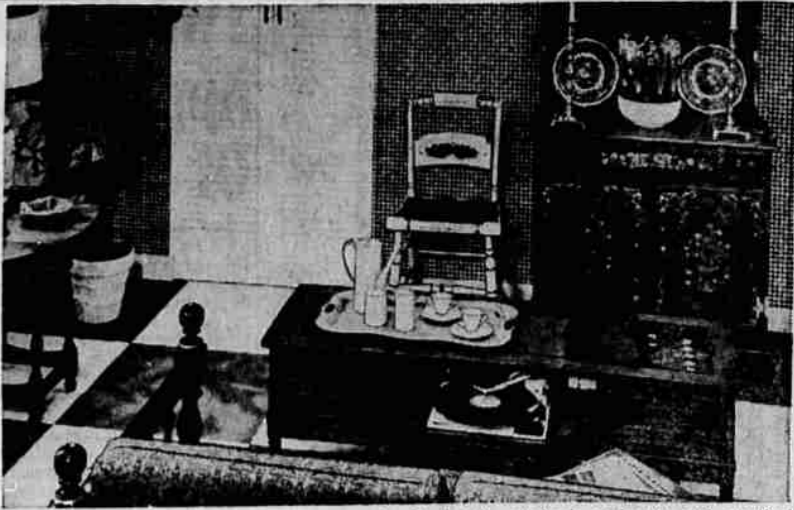
Fabrics for fall are an integral part of fashion, expressing in their textures "The Look," either sportive or sultry.

Shaggy-surfaced tweeds, sometimes with mohair loops or nubs, go city-sportive. Closely woven fabrics such as meltons and opulent fur blends are on the side of sophistication, while the many mohairs and mohair blends look both casual and dressy, and always very elegant.

New emphasis on tailoring calls for menswear textures and patterns—chalk and pin stripes, glen plaid worsteds, herringbones, houndstooth designs, foulard prints. Crisp elegance for coatings is captured in cords, twills and ottomans.

Sophistication after five brings many dramatic fabrics into the fashion picture—crepes, velvets, brocades, lames, cloques and matelasses, sculptured looks in silks and satins.

Very sportive indeed are fabrics that look like shiny black patent leather, as well as clever copies of alligator and lizard.



FUNCTIONAL UTILITY — Handsome cabinetry combines with functional utility in this home fashion in the "New World" versatile coffee table stereo console. Expansive mood—a capacious hutch and spindle-framed of usable table surface is made possible by a swing-away turntable underneath the top. Continuing the emphasis on beauty and practicality are home fashion in the "New World" sleep sofa.

WOOL SUIT — This sturdy and handsome herringbone striped American wool suit for fall has desk-to-dinner adaptability. Jacket has wide lapels.

Popular Crewel



7490 by Alice Brooks

Add a rich touch with authentic crewel flowers and animals. Very easy stitchery!

Tree of life—vivid, fascinating crewel embroidery panel. Use wool or 6-strand cotton. Pattern 7490: transfer 16x20-inches, color chart.

THIRTY FIVE cents (coins) for this pattern—add 15 cents for each pattern for first-class mailing and special handling. Send to Alice Brooks, Medford Mail Tribune, Needlecraft Dept., P.O. Box 163, Old Chelsea Station, New York 11, N.Y. Print plainly NAME, ADDRESS, PATTERN NUMBER.

206 HANDCRAFT HITS in our big, big, new 1964 Needlecraft Catalog, out now! See toys, fashions, crewelwork, heirlooms, gifts, bazaar hits—everything to crochet, knit, sew, weave, embroider, quilt, smock. Send 25c right now.

MONARCH MONARCH MONARCH

CONVERT Leaves - Grass - Vines into RICH ORGANIC FERTILIZER WITH Miller's COMPOST MAKER

- PET SUPPLIES OF ALL KINDS
- Dog Sweaters ● Dog Coats
- Kitty Litter ● Electric Dog Clippers
- Frozen Brine Shrimp
- Meal Worms
- Tropical Fish Foods

SPRING FLOWERING BULBS

Monarch SEED & FEED CO. 10 Gallon AQUARIUM Complete with Hood & Accessories Regular \$24.95 SAVE \$3. SPECIAL 21⁹⁵

6th & Bartlett

MONARCH MONARCH MONARCH

BABY TURTLES 39¢ Ea. ★ Chipmunks ★ Squirrels \$2⁹⁸ Ea. ★ Guinea Pigs \$1⁵⁰ Ea.

NEON TETRAS Reg. 69c Ea. NOW 49¢ Each 2 for 89¢

You're sure of satisfaction... from retailers who feature known brands

Retailers know you're sure of satisfaction with known brands because you'll get the quality you expect.

Brand Names are built on your confidence. You and your neighbors dictate the standards a Brand Name product must meet to consistently deliver the value and service you want.

A respected Brand Name is a manufacturer's most valuable asset and he spares no effort to protect it by constant testing and bettering his product.

A Brand Name is the maker's guarantee of satisfaction doubly endorsed by the retailer who sells it.

For dependable quality and consistent satisfaction you will do better with the brands you know; get to know those you see advertised in this newspaper.

To get the most for your money buy by Brand Name and be sure!



A Brand Name is a maker's reputation

BRAND NAMES FOUNDATION, INC., 437 FIFTH AVENUE, NEW YORK 14, N.Y.

Top Suit Shapes



by Marian Martin

Look again—fall's TWO top suit looks are in this styled-to-slim pattern. Two jackets, two skirts—wear as shown, or mix-match them.

Printed pattern 9469: Half sizes 12½, 14½, 16½, 18½, 20½, 22½, 24½. Size 16½ takes 2½ yards 54-inch.

FIFTY CENTS in coins for this pattern—add 15 cents for each pattern for first-class mailing and special handling. Send to Marian Martin, Medford Mail Tribune, Pattern Dept., 232 West 18th St., New York 11, N.Y. Print plainly NAME, ADDRESS with SIZE and STYLE NUMBER.

CLIP COUPON for 50c FREE PATTERN in big, new Fall-Winter Pattern Catalog, just out! 354 design ideas. Send 50c for Catalog.

The Laundromat That Saves You Money!

ONLY \$248 Even LESS With Trade!

for This Heavy Duty LAUNDROMAT That Washes 12 Dry Pounds—Yes, 12 Dry Pounds!

Let Us Appraise Your Old Washer CALL 773-6241 NOW!

LOOK— at These MONEY-SAVING Features:

Every HEAVY DUTY LAUNDROMAT® Automatic Washer has all these features!

- TWO HEAVY DUTY BALL BEARINGS... electronically hardened and lubricated for life
- NEW ACRYLIC PORCELUX FINISH is stain, chip and crack resistant
- Save up to 10 gallons of water and ½ the detergent with AUTOMATIC SUDS 'N WATER SAVER
- Self-Cleaning AUTOMATIC LINT-EJECTOR and wash tub
- WEIGHING DOOR prevents overloading has Safety Switch
- Longer-Lasting NEW SYNTHETIC RUBBER BOOT
- HEAVY DUTY ½ HP MOTOR with bronze bearings for longer life
- POWERFUL DRAIN PUMP with Neoprene impeller... pumps water over 12 feet high
- HEAVY GIRDER-LIKE CONSTRUCTION... Heavy Steel Gauge Welded Frame and Cabinet
- HEAVY DUTY HYDRAULIC SHOCK ABSORBERS for quiet, vibration-free operation
- DURABLE NEOPRENE HOSES will not get hard, brittle or crack
- POWER-PAK DRIVE... reliable belt drive system. No expensive transmission to repair or replace
- LARGE CAPACITY TUB washes even the largest loads clean

Easy Terms Westinghouse Guarantees Cleaner Clothes or Your Money Back!

trowbridge electric

Main and Fir Ph. 773-6241 Use Our Customer Parking Area

- Suds 'n Water Saver... saves water and uses up to ½ the detergent normally used in other automatics. Check directions on a detergent box and see!
- Weighting door prevents overloading... ends guess work.
- Automatic lint ejector (not a lint collector).
- 3 Rinses (2 deep rinses... exclusive with Westinghouse).
- Uses less hot water... saving dollars each year!