

### Bicycles Become More Popular on Corvallis Campus

CORVALLIS — Fall fashion note for college students. Bicycles are now in style. At Oregon State university this fall, about one out of every four students will ride a bicycle around campus. Bicycle use has been zooming upward the last few years and along with campus auto traffic, is getting special attention. Last year there were almost 1,200 bicycles on campus. Campus Police Chief Arthur Freundt has estimated that this fall there will be about 2,500 bicycles licensed when the 10,000-plus OSU student registration is completed.

The big boom in bicycles has prompted campus police to draft detailed bicycle regulations for safety and cycling convenience. A license good for the campus and city of Corvallis will cost 50 cents and must be attached to the bike frame.

The university is installing special lanes along one-way campus streets and erecting small stop signs designed especially for bike riders. In addition, there are 1,500 bicycle racks for parking on campus and another 1,000 will soon be installed.

Why the increase in bicycles? University officials note that since student cars are not allowed on campus during the day, students have found that bikes save time en route to classes. OSU's faculty members also are taking to bicycles as a means of transportation. They have found that bikes are handy to pedal to work and help beat the parking problem.

Dean of Administration Milosh Popovich thinks that "part of the bicycle popularity might also be attributed to the stress on physical culture these days."

### Flight Safety Week Will Be Observed

LOS ANGELES — James C. Hamaker of Medford is one of 13 Federal Aviation Agency pilot examiners who will conduct the Flight School's program in Oregon in connection with observance of Flight Safety week in Oregon Sept. 16 to 22.

Fifteen Federal Aviation Agency approved flight schools in Oregon have been contacted and many will participate in the program aimed at reducing air accidents and improving air safety.

The basic aim of the observance, according to Joseph H. Tippets, director of the western region, is to call attention of Oregon pilots to the need for acquiring knowledge and skills needed to control an aircraft in flight solely through reference to instruments in the cockpit.

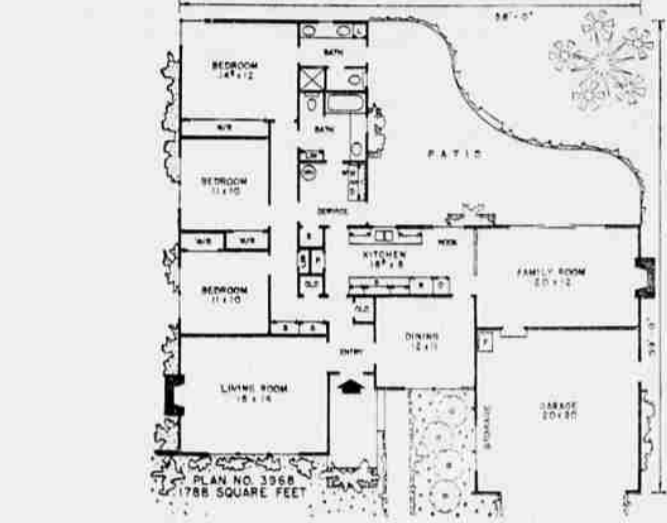
The program also will encourage Oregon pilots to obtain FAA "Blue Seal" certificates signifying successful completion of basic instrument flight training.

### Jensen To Attend Special Conference

CORVALLIS — Dr. James H. Jensen, president of Oregon State University, has been invited by Gov. Otto Kerner of Illinois to attend a special conference on the growing potential of the application of nuclear energy Sept. 25.

The conference will be sponsored by the University of Chicago and Argonne National Laboratory along with the State of Illinois and the Chicago Research and Development Council.

President Jensen has been a member of the policy advisory board of the Argonne National Laboratory, an agency managed by the University of Chicago for the Atomic Energy Commission, for several years. The nuclear applications conference is intended to introduce industrial firms to the critical need for technology, engineering and production in this field.



### This Week's Plan for Home Builders

By HIAWATHA ESTES  
Individuality and quality are apparent throughout this timeless looking rustic ranch home. Many builders hesitate in attaching a garage to the front of a home as they believe it detracts from the overall appearance of the design. This is true in too many cases but definitely not in this case. Here the individualistic design of the gable roof extending out over the living

room has been duplicated over the garage. Tapered barge rafters project outwards from the house while a false beam supported by a hand sawn corbel is located just below the gable. The wall in the gable projects past the regular wall forming a shadow line and a much more interesting exterior. Note how a portion of the roof extends past the left side of the living room gable

and both sides of the garage gable. These projections are supported by beams and band sawn braces. Used brick has been used to form a chimney, as veneer and in a planter which supports the roof which extends out over the front porch. The more formal area of the home — the living and dining rooms — are immediately off the entry.

As home owners, we are a nation of collectors. From the day we move into a house possessions start piling up. All kinds of items begin to accumulate at such a rapid pace that inevitably the time arrives when we must face the problem of where to put them. To help solve that problem, this plan offers considerably more storage than the average house.

In addition to a generous amount of wardrobe space — with storage drawers at the bottom — in each bedroom, each bath has pullman lavatories with drawers and shelves below plus a linen closet. There is another linen closet opening to the hall as do two walk-in closets plus two extremely wide, floor to ceiling general storage closets which back up to the living room.

A wide broom closet is in the service, and wall cabinets have been placed above the washer and dryer. A roomy pantry is incorporated in the kitchen layout. A wide storage shelf, which a car can drive under, extends across the rear of the garage while the garage door has been offset to provide 20 feet of storage space along one side of the garage.

Before laying this plan aside, notice the accessibility of the family room to both the garage and patio, the master bath to the patio — and pool — and the family bath to the driveway.

Complete working drawings for this plan can be purchased at a cost of \$7.50 for the first set and \$5 for each additional set when ordered at the same time. This plan will be available at these prices until Dec. 31. Please allow two to three weeks for delivery. The following home plan books are also available: *Hillmark Homes*, \$1; *Award Homes*, \$1; *Town and Country Homes*, \$1; *Homes for Living*, \$1; *Homes of Distinction*, \$1; *Ranch and Modern Homes*, \$2. All books a \$7 value, only \$3. Send all orders for either plans or books to: Hiawatha Estes, post office box 464-T, Northridge, Calif.



MRS. LOGAN RHODES HAZEN Assumes Management Duties

### Convalescent Center Hires New Manager

Mrs. Logan Rhodes (Jean P.) Hazen, who recently arrived from Susanville, Calif., this week assumed the office of administrator of Hawthorne Convalescent and Rehabilitation Center, 625 Stevens st., Hawthorne Convalescent foundation members have announced.

The new administrator, a registered nurse, comes to the valley with a varied background of professional experience. She also has been an active worker in community activities.

Mrs. Hazen received her bachelor of science degree at the University of Hawaii in 1949 and was first registered at the Latter Day Saints hospital, Salt Lake City, in 1945. She holds active registries in Utah, California and Oregon, with inactive ones in Kansas, Hawaii and Montana.

Graduate of Montana State. A graduate of Great Falls, Mont., high school, Mrs. Hazen attended Montana State college, Bozeman, Mont., and University of Utah.

General duty work was done by her in Kansas, Montana and Hawaii hospitals. Now a consultant for Nursing Services administration, she travels throughout the country in this position, her next assignment to be later this fall in Indianapolis, Ind.

She has worked as a public health nurse in Utah, for the American Red Cross in Abilene, Kans., and in Honolulu, Hawaii. Mrs. Hazen also has participated in seminars and workshops in Hawaii, Montana and California and has instructed for the ARC.

Montana state board of health; Montana State college and University of Oklahoma nursing services.

Mrs. Hazen is a past president of District 14, Nurses association, Livingston, Mont.; been a board member of the Montana Nurses association; a member of the California Nursing Homes association and California Nurses association.

Managed Nursing Home

Until arriving in Medford she had been associated with her husband in the management of the Riverside Nursing home in California, an accredited home which also is registered with the American Hospital association. She said the same type of professional patient care will be given patients at the Hawthorne home.

Mother of three school-age children, Mrs. Hazen is to be joined here by the family. The children, who will attend Medford schools are Logan Rhodes Hazen III, 13, in the eighth grade; Moira, 11, sixth grade, and Cynthia, 8, fourth grade.

Her community activities include past chairman, mass feeding, Civil Defense, Lassen County Chamber of Commerce; Methodist church and choir; Parent Teacher association; Business and Professional Women treasurer, and Order of Eastern Star.

Hazen, a graduate of Montana and Kansas State colleges, holds a masters degree in agronomy, and during World War II in the Pacific theater was a combat medical research technician.

### Area Girls Place In Riding Events

SALEM — A number of southern Oregon girls were among the winners when feminine riders dominated 4-H horsemanship classes at the Oregon State Fair on closing night.

The girls captured all but one of the big awards. One boy, Pat Moore, 14, Hood River, was a winner. He was named champion of the intermediate western horsemanship class.

Reserve champion was Liddy Spaulding of Grants Pass, who rode "Teffah" in the English intermediate horsemanship class. Leslie Krambeal, Eagle Point, won a red award in the same competition.

Another Grants Pass girl, Jill Henderson, 15, was reserve champion in the intermediate class of senior western horsemanship, riding "Crystal."

Sue Acheson, Medford, and Tom Perry, Eagle Point, received blue awards in intermediate western horsemanship. Linda Gibson and Clint Gibson, both of Central Point, were given red awards in senior western horsemanship.

### Alumni Contribute \$40,254 to OSU Fund

CORVALLIS — Alumni of Oregon State university contributed \$40,254 to the institution through the 1962-63 OSU fund, according to the annual report of the Fund published by the OSU Alumni association.

The Fund, now in its fifth year, received 4,018 contributions from 3,534 alumni. The 1962-63 Fund total was a 33 per cent increase over last year.

Out of 32,000 OSU alumni contacted, 10.8 per cent contributed. The average contribution increased from \$8.58 in 1961-62 to \$11.40 this past year. Eight per cent of OSU's 19,407 alumni in Oregon gave to the Fund. Contributed monies went for scholarships, loans, equipment, research, faculty support and special university and alumni association projects.

About one billion of the world's people suffer from hunger or malnutrition.

# YOU ARE INVITED TO ATTEND THE SOUND SHOP'S GRAND OPENING TODAY

FRIDAY & SATURDAY 9 A.M. to 5 P.M.



Philco Special 90 Television

Patented cool chassis for greater dependability longer TV life. Extra large 5" x 3" speakers.

\$204<sup>95</sup>

Finished To Match Walnut

## 1 FREE! WITH EACH \$200 PURCHASE

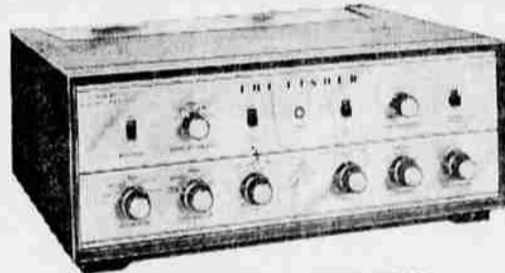
DELUXE 8 Transistor RADIO

WESTINGHOUSE 6 Transistor RADIO

Complete Repair Dept. For Hi-Phi, Stereo, Tape Recorders, T-V's, Etc.



SONY 200 STERECORDER



FISHER STRATAKIT, KX-200 80-WATT Master Control Amplifier



FISHER X-100-B 50-WATT Master Control Amplifier

FISHER World's Finest

Stereophonic High Fidelity Component

108 Empire Stereo Mono Cartridges, reg. \$35 \$17<sup>95</sup>

Dynaco B & O Cartridges Reg. 29.95 \$14<sup>98</sup>



OPEN HOUSE!

SOUND SHOP

1116 No. Riverside Phone 772-4101

FREE Voice of Music RECORD PLAYER

Not Necessary To Be Present To Win ★ DRAWING SATURDAY ★

FREE Coffee & Donuts