

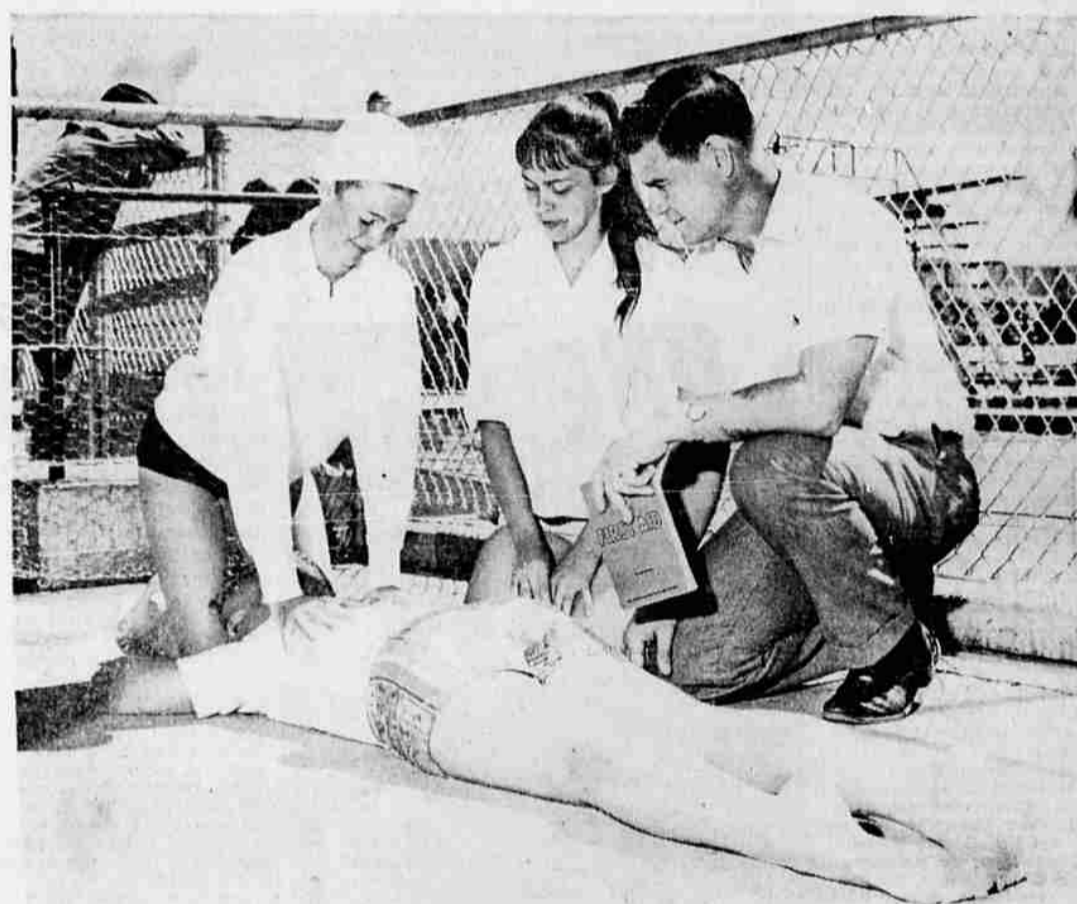
GIVE the United Way



Emergency food, clothing and shelter for families and individuals are available through the Salvation Army, supported by United Crusade contributions. At the Medford shelter last year 7,042 meals were served and beds were provided for 2,964. Another Salvation Army program is the White Shield Home and hospital in Portland which offers adoption service and care for unwed mothers.



Activities of the Boy Scouts of America and Rogue Valley Girl Scout council are among the agencies supported through the annual United Crusade in Jackson county. The 1963-64 campaign has a goal of \$180,040 to be used by 20 agencies in Jackson county and Oregon. Training meetings for the campaign workers start Monday evening and will be held nightly through Friday, Sept. 15.



First aid and water safety programs are only two of the services made available by the American Red Cross. Last year more than 500 volunteers assisted the Jackson county chapter to carry out its numerous programs. Other programs are the Junior Red Cross and Bloodmobile.



A contribution to the United Crusade can bring a smile to a small girl's face when she receives her first doll, a gift from one of several agencies which provide services for children. Among these is the Boys and Girls Aid society which provides specialized social services for children, foster home care and adoptive service.



Every cent of the \$3,500 allocation to the University of Oregon Medical Research Foundation by the United Crusade is used for research. Donors may designate gifts for particular research. The medical school has an international reputation in health research: it has the largest primate center in the world.



This little girl is being helped through United Crusade money, part of which supports the Arthritis and Rheumatism research projects. Established in 1948 this agency directs patient aid for medically indigent persons, professional education and training.



Camp Fire Girls, some 855 strong in Jackson county, is among the programs for youth supported through contributions to the United Crusade. Some 282 volunteer leaders direct the girls from 7 to 17 years. (Brainerd's photo)

- American Red Cross
- American Social Health
- Arthritis and Rheumatism
- Albertina Kerr Homes and Nursery
- Boy Scouts of America
- Boys and Girls Aid Society
- Camp Fire Girls
- Campaign Expense
- Campus Activities, UO and OSU YMCA and YWCA
- Catholic Services
- Children's Farm Home
- Christie School
- Jackson County Family and Child Guidance Clinic
- Jackson County Mental Health Association
- Oregon Medical Research
- Oregon Council on Crime and Delinquency
- Providence Nursery
- Rogue Valley Girl Scout Council
- Salvation Army and White Shield Home
- School of Hope
- St. Mary's Home for Boys
- USO
- Villa St. Rose
- Volunteers of America Mothers and Childrens Home
- Waverly Baby Home
- YMCA Youth and Government
- YMCA, Medford
- United Crusade Administration



The Jackson County Family and Child Guidance clinic, is sponsored in part by United Crusade contributions. In addition to counseling emotionally disturbed children, the clinic assists educators and those referred by other professions in family and marriage counseling. The clinic now has three psychiatric social workers on its staff, in addition to other personnel. (Brainerd photo)